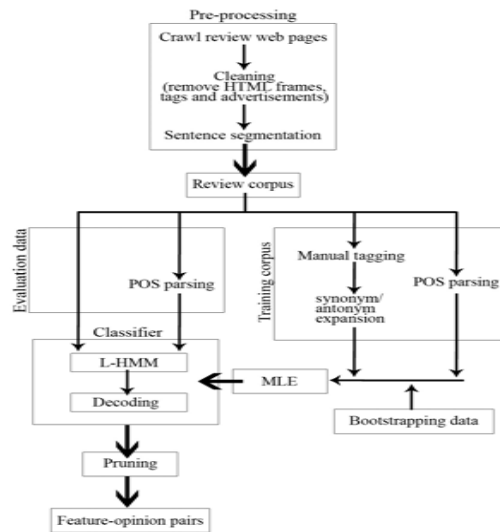


# Associate Professor Wei Jin

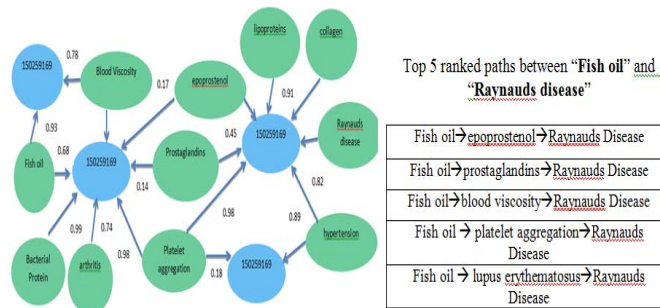
Department of Computer Science and Engineering

Text and Web Data Mining, Information Retrieval, Biomedical and Healthcare Informatics

## Opinion Mining and Sentiment Analysis



## Biomedical Text Mining



## Text and Web Data Mining

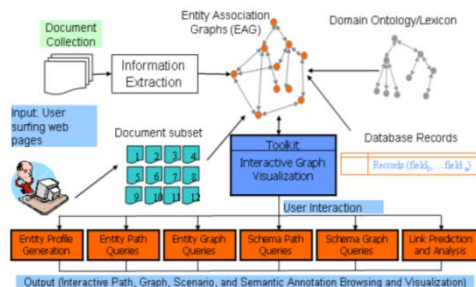
- Active projects in association discovery from large document collections
- Social network analysis and community detection
- Opinion mining and sentiment analysis
- Wikipedia-supported data mining applications
- Expertise in text and Web mining, and information retrieval

## Biomedical and Healthcare Informatics

- Active projects in mining biomedical literature for knowledge discovery
- Improving knowledge discovery through integrating domain knowledge and human intelligence

## Multilingual Data Analysis

## Association Discovery and pattern analysis



## Wikipedia-supported Knowledge representation and Mining Framework

