

**University of North Texas College of Music
Tuba Auditions for Large Ensembles Fall 2019**

Round 1:

Thursday, August 22, Donald Little Studio #227 (begin 8:00 am)

Round 2A:

Friday, August 23, MPAC: Winspear Hall (10:45am—12:30pm)

Round 2B:

Friday, August 23, MPAC: IRR (5:30—6:30pm)

Tuba Audition Repertoire:

(All excerpts are to be played on the CC or BBb tuba)

Required materials for all:

Tchaikovsky, Symphony No. F, Movement 4

Barnes, Third Symphony, Lento Tuba Solo

Hindemith, Symphonic Metamorphosis

Required for consideration for Orchestras, Wind Symphony, Symphonic Band and Brass Band:

Grantham, (The Dance, Tuba Solo)

Holst, Planets

Required only for consideration for Orchestras

Orff, Carmina Burana

TCHAIKOVSKY SYM#4

I. II. TACET.

IV. FINALE.

Allegro con fuoco.

TUBA.

3
ff

1
ff

21 A3
ff

1
ff

5
mf

B 16

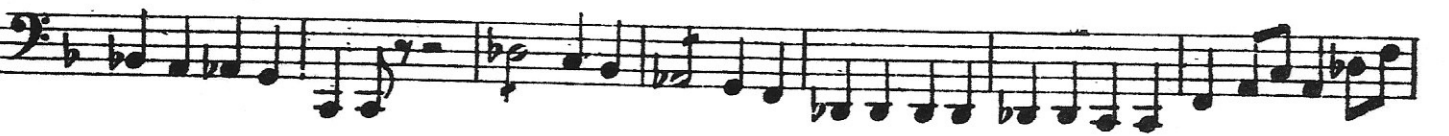
C 12
ff

4

1
6 D3
1

BEGIN
↓
ff

TUBA.



Fine

THIRD SYMPHONY

Tuba

James Barnes

Op. 89

Lento $\text{♩} = \text{♩} = 66$

3

4 one solo

5

I.

S692

Paul Hindemith – Symphonic Metamorphosis

(ALL)

Excerpt 2

$\text{♩} = 90$

II [L] +4 Lebhaft

[M]

[N]

[O]

[P] tenuto

2

a tempo

9

[Q]

10

J'ai été au bal (Grantham)

$\text{♩} = 96$

Very lively & spirited
in a light swing rhythm

Solo

116

p mp p mp p

cresc. mf dim. mp cresc.

f dim. mf cresc. ff dim.

128

f mf mp mf mp mf mp cresc. f

mf f cresc. ff

mf f cresc. ff

140

p sub.

HOLST "PLANETS"

1. → Allegro

Musical score for the first movement, "Mars, the Bringer of War". The score is written in bass clef with a 5/4 time signature. It begins with a *fff* dynamic and features several triplet markings. The first staff contains a triplet of eighth notes, followed by another triplet. The second staff continues with a triplet and a half note. The third staff has a half note, a whole note, and a triplet of eighth notes. The fourth staff starts with a *Soli* marking and a *fff* dynamic, followed by a half note, a whole note, and a half note. A box containing the number "8" is placed at the end of the fourth staff.

2. Allegro giocoso

Musical score for the second movement, "Mars, the Bringer of War". The score is written in bass clef with a 2/4 time signature. It begins with a *ff* dynamic. The first staff contains a series of eighth notes. The second staff continues with eighth notes and a *fff* dynamic. The third staff has a triplet of eighth notes and a *fff* dynamic. The fourth staff starts with a *p* dynamic, followed by a *cresc.* marking and a *ff* dynamic. The fifth staff continues with eighth notes and a *ff* dynamic.

4.

Musical score for the third movement, "Mars, the Bringer of War". The score is written in bass clef with a 3/4 time signature. It begins with a *ff* dynamic. The first staff contains a series of eighth notes. The second staff continues with eighth notes and a *ff* dynamic. The third staff has a triplet of eighth notes and a *ff* dynamic. The fourth staff continues with eighth notes and a *ff* dynamic. The fifth staff ends with a *Segue* marking and a key signature change to D major.

17

Lento maestoso
legato

Musical score for the fourth movement, "Mars, the Bringer of War". The score is written in bass clef with a 2/4 time signature. It begins with a *p* dynamic and a *molto cresc.* marking. The first staff contains a series of eighth notes. The second staff continues with eighth notes and a *molto cresc.* marking. The third staff has a *molto cresc.* marking and a *p* dynamic. The fourth staff continues with eighth notes and a *molto cresc.* marking. The fifth staff ends with a *molto cresc.* marking and a *Presto* marking.

98

ff

$\text{♩} = 144$

99

8

Trbn I II

Trbn III

Begin

ff

100

sub. molto stent.

3p

rit. a tempo sub.

ff

4p come prima

3p

rit. a tempo sub.

ff

101

4

4

ff

scatenato

accel.

ff

102

3

4

4

4

ff

rit.

4p

22. 23 Tacet

(BEGIN)

24.

4/p $\text{♩} = 72$

estatico

f ben legato

colla parte

c.p.

Tuba

F#

c.p.

c.p.

140

c.p.

c.p.

6p a tempo $\text{♩} = 52$

culminante

4p

6p

rit.

ff

3/4 Pesante $\text{♩} = 60$

poco string

141

attacca (END)

25.

3p $\text{♩} = 120 - 132$

142

40

146

Coro, Sopr.

ff

ff