

Emergency Evacuation Procedures

Wooten Hall

1121 Union Circle, Denton TX 76201

Severe Weather

In the event of severe weather, all building occupants should immediately seek shelter in the designated shelter-in-place area in the building. If unable to safely move to the designated shelter-in-place area, seek shelter in a windowless interior room or hallway on the lowest floor of the building.

All building occupants should proceed to the first floor. Avoid standing near windows, walls and doors made of glass. See following floorplan for designated recommended shelter areas.

Bomb Threat/Fire

In the event of a bomb threat or fire in the building, all building occupants should immediately evacuate the building using the nearest exit. Once outside, proceed to the designated assembly area. If unable to safely move to the designated assembly area, contact one or more members of your department or unit to let them know you are safe and inform them of your whereabouts.

All building occupants should immediately evacuate the building and proceed to Parking Lot 37 East of Wooten Hall.




WOOTEN HALL


BUILDING #0150


12-2018


Exterior Gross Area
28582


Safety Legend

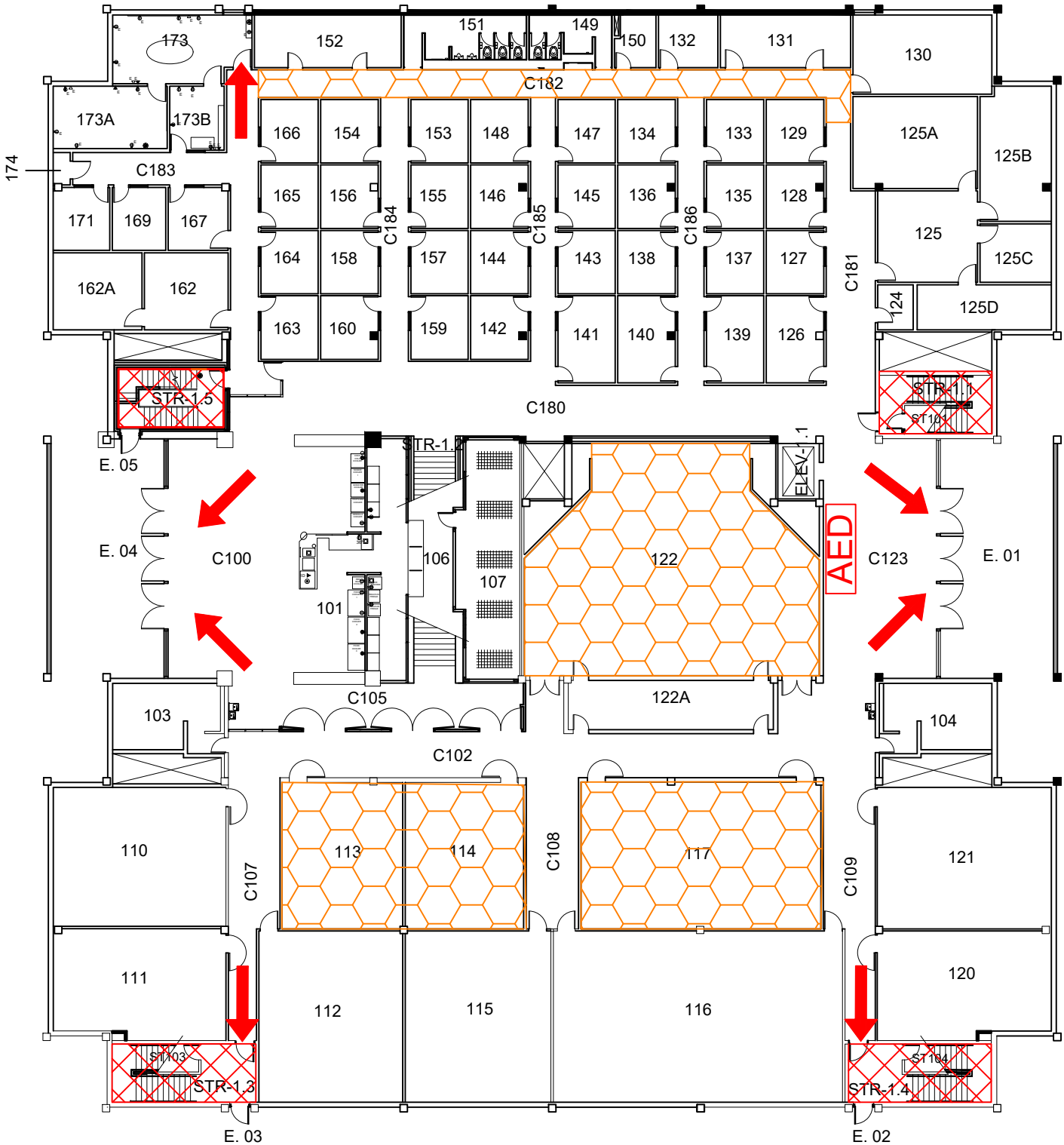
 Areas of Refuge

 Tornado Shelter Areas

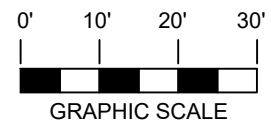
 Exit/Evacuation Routes
In case of fire, do not use elevator

 Automatic External Defibrillator




 Evacuation Chair





FIRST FLOOR PLAN



Safety Legend

-  Areas of Refuge
-  Tornado Shelter Areas
-  Exit/Evacuation Routes

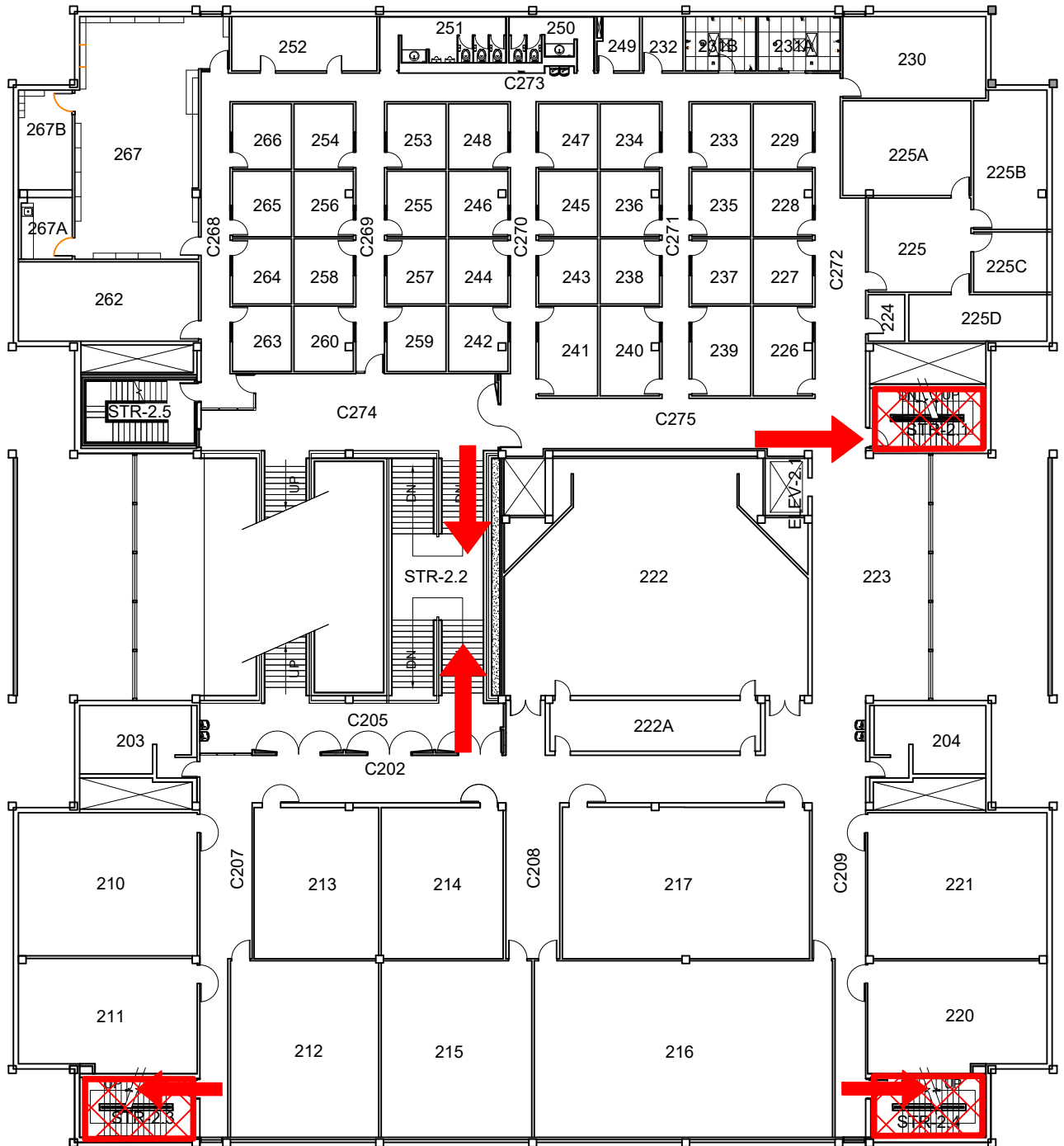
In case of fire, do not use elevator

-  AED Automatic External Defibrillator
-  CHAIR Evacuation Chair

WOOTEN HALL

BUILDING #0150
12-2018

Exterior Gross Area
26987



SECOND FLOOR PLAN



