

Emergency Evacuation Procedures

West Hall

320 North Blvd., Denton, TX 76201

Severe Weather

In the event of severe weather, all building occupants should immediately seek shelter in the designated shelter-in-place area in the building. If unable to safely move to the designated shelter-in-place area, seek shelter in a windowless interior room or hallway on the lowest floor of the building.

All building occupants should take shelter in the interior hallways of the building on the 1st floor. Avoid standing near windows, walls and doors made of glass.

Bomb Threat/Fire

In the event of a bomb threat or fire in the building, all building occupants should immediately evacuate the building using the nearest exit. Once outside, proceed to the designated assembly area. If unable to safely move to the designated assembly area, contact your RA to let them know you are safe and inform them of your whereabouts.

Persons with mobility impairments who are unable to safely exit the building should move to a designated area of refuge and await assistance from emergency responders.

All building occupants should immediately evacuate the building and proceed to parking lot 17 North of the building.

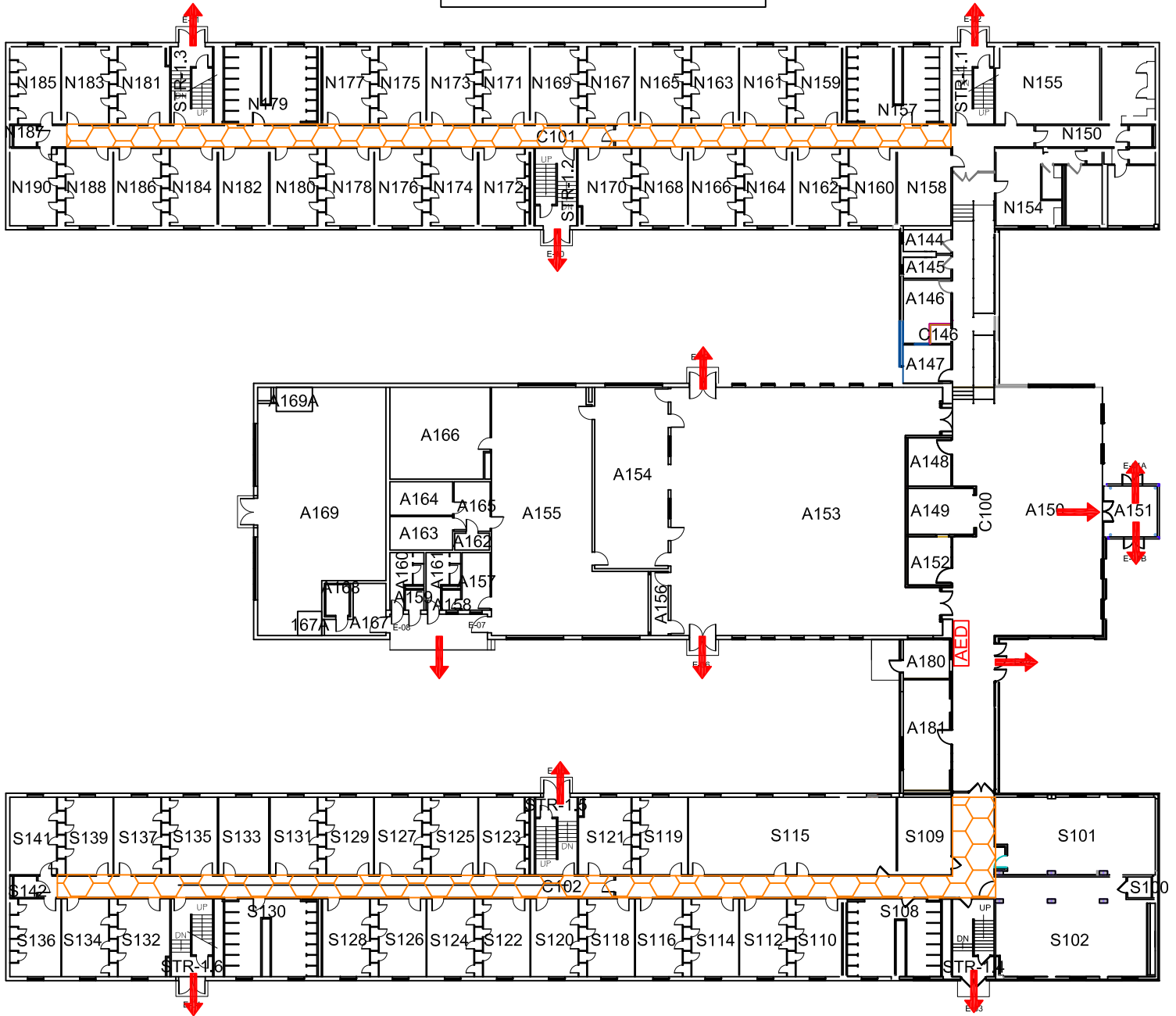


WEST HALL

BUILDING # 0181




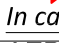

08-2018

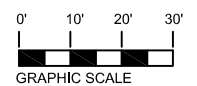
Exterior Gross Area
42402



FIRST FLOOR PLAN

Safety Legend

-  Areas of Refuge
-  Tornado Shelter Areas
-  Exit/Evacuation Routes
In case of fire, do not use elevator
-  AED Automatic External Defibrillator
-  CHAIR Evacuation Chair

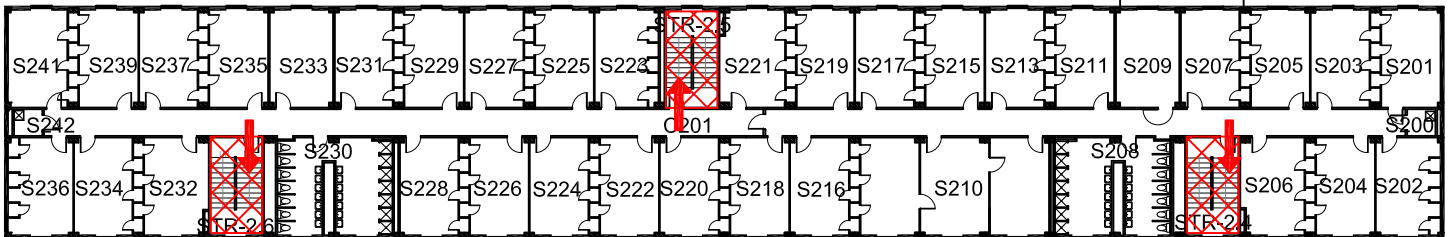
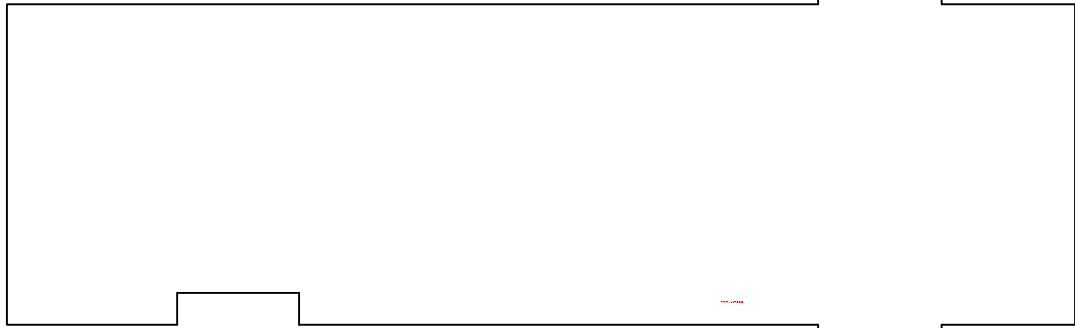
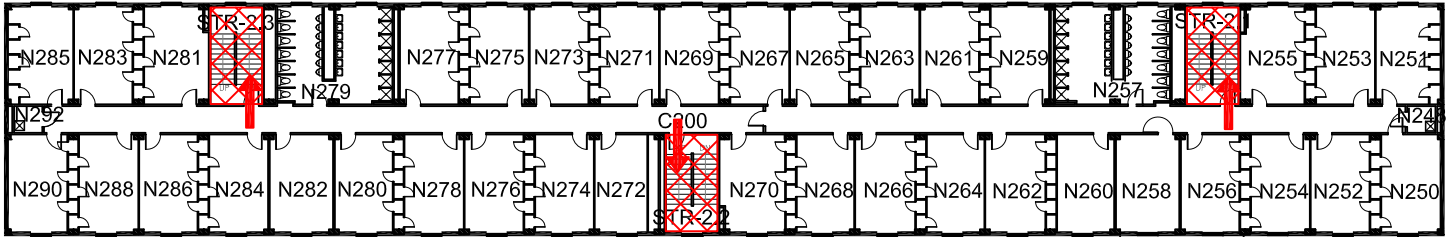


WEST HALL

BUILDING # 0181

03-2016


Exterior Gross Area
26857





SECOND FLOOR PLAN




Safety Legend


 Areas of Refuge

 Tornado Shelter Areas

 Exit/Evacuation Routes

In case of fire, do not use elevator

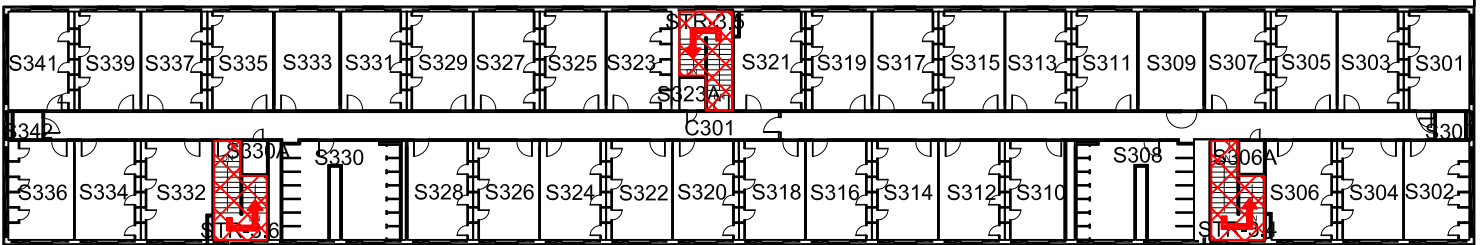
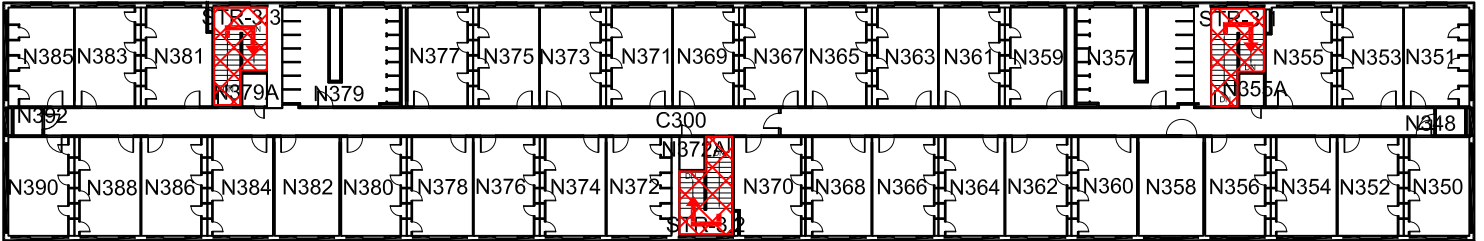
 Automatic External Defibrillator

 Evacuation Chair

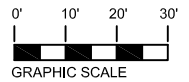
WEST HALL

BUILDING # 0181
08-2016






Exterior Gross Area
26857



THIRD FLOOR PLAN



Safety Legend

-  Areas of Refuge
-  Tornado Shelter Areas
-  Exit/Evacuation Routes
- In case of fire, do not use elevator*
-  AED Automatic External Defibrillator
-  CHAIR Evacuation Chair