

Emergency Evacuation Procedures

Welcome Center

1417 Maple St. Denton, TX 76201

Severe Weather

In the event of severe weather, all building occupants should immediately seek shelter in the designated shelter-in-place areas in the building. If unable to safely move to the designated shelter-in-place area, seek shelter in a windowless interior room or hallway on the lowest floor of the building.

All building occupants should take shelter in the restrooms and interior rooms on the 1st floor of the building. Avoid standing near windows, walls and doors made of glass.

Bomb Threat/Fire

In the event of a bomb threat or fire in the building, all building occupants should immediately evacuate the building using the nearest exit. Once outside, proceed to the designated assembly area. If unable to safely move to the designated assembly area, contact one or more members of your department or unit to let them know you are safe and inform them of your whereabouts.

Persons with mobility impairments who are unable to safely exit the building should be moved to the designated area of refuge and await assistance from emergency responders.

All building occupants should immediately evacuate the building and proceed to the North end of Kerr Hall.

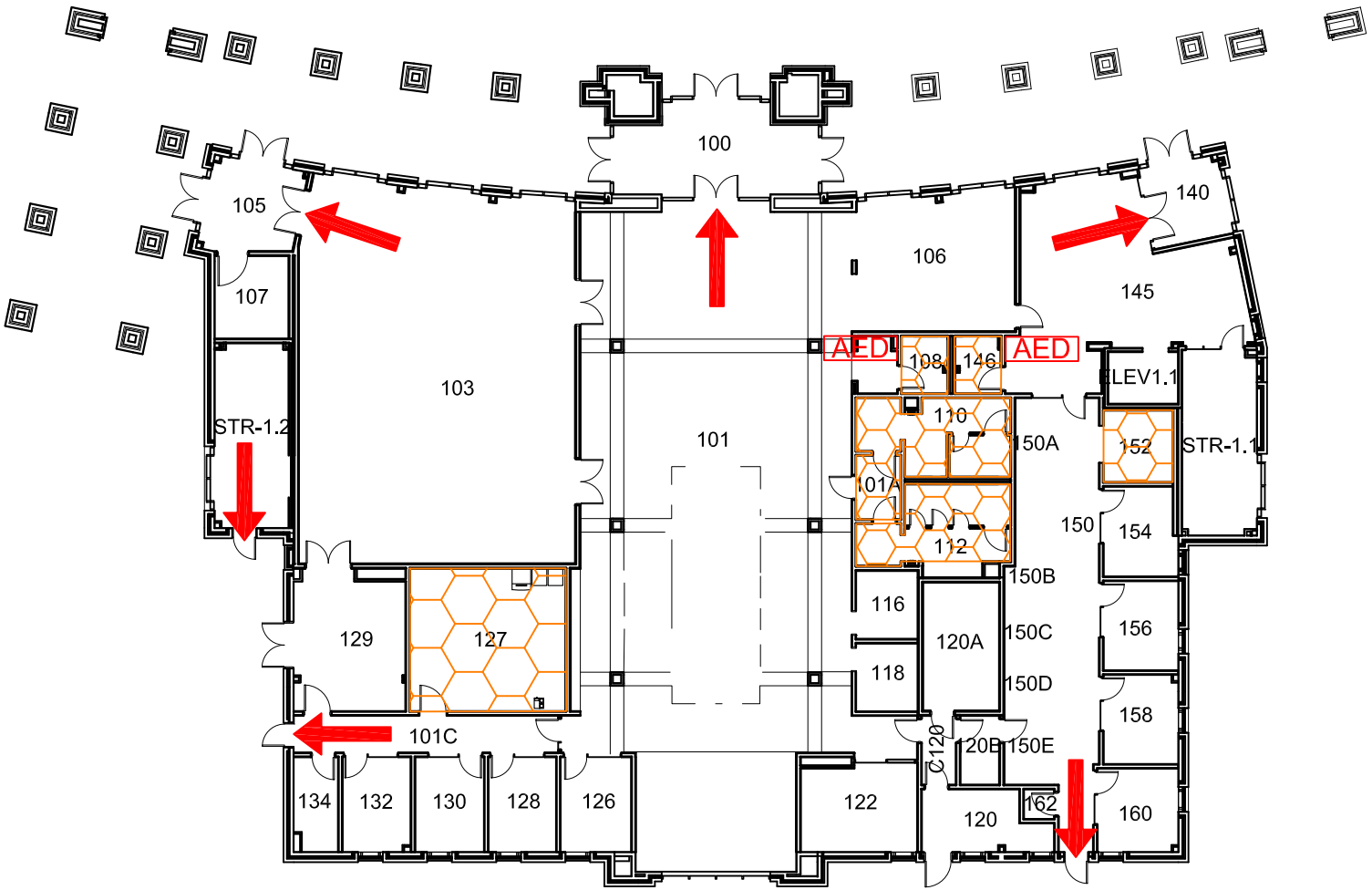


TOUR CENTER

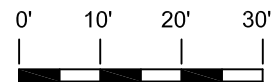
BLDG # 0169

01-2019

Exterior Gross Area
12872








FIRST FLOOR PLAN



GRAPHIC SCALE

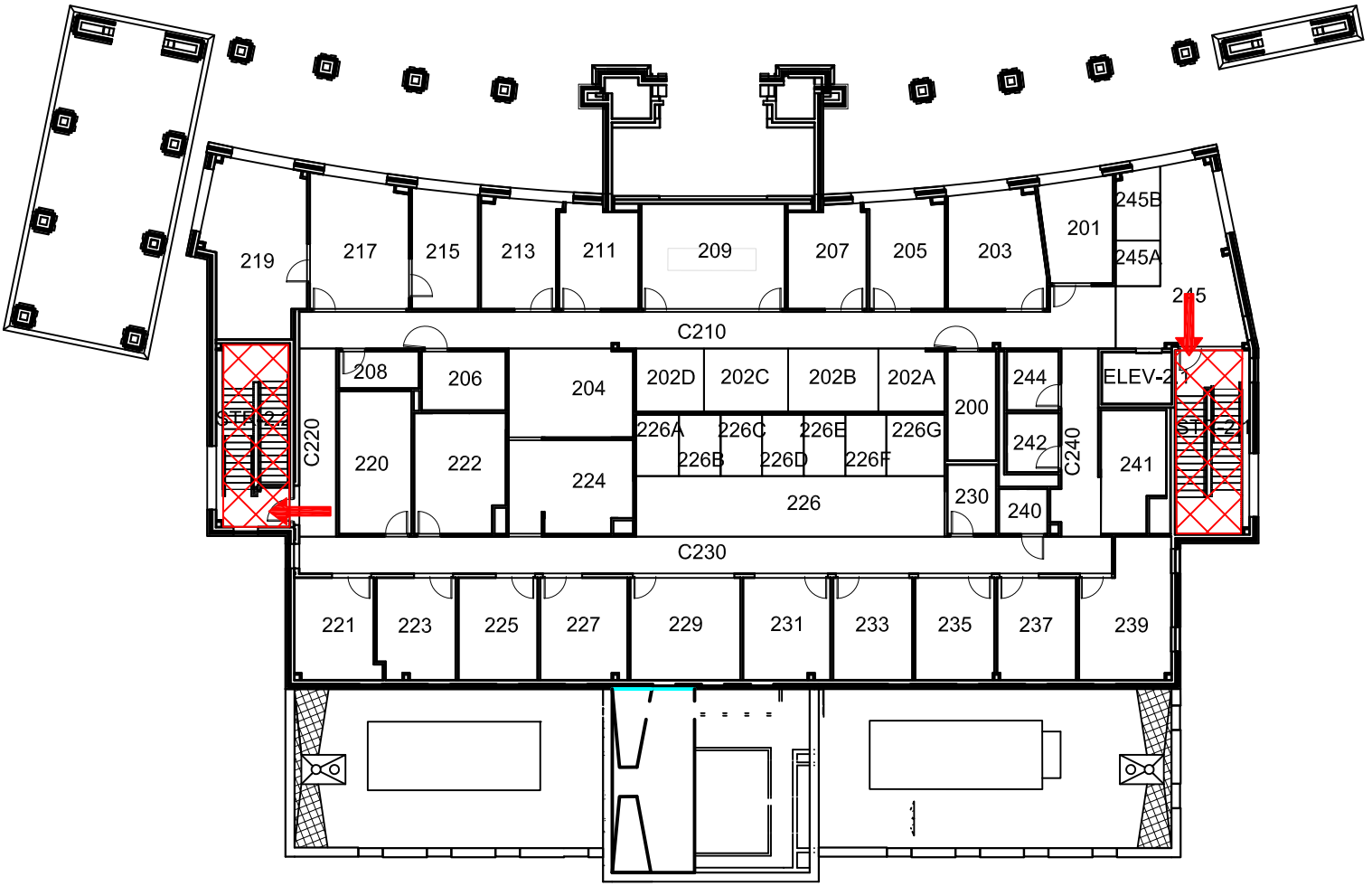
Safety Legend

-  Areas of Refuge
-  Tornado Shelter Areas
-  Exit/Evacuation Routes
In case of fire, do not use elevator
-  AED Automatic External Defibrillator
-  CHAIR Evacuation Chair

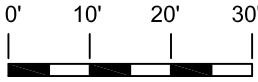
WELCOME CENTER

BLDG # 0169
03-2019

Exterior Gross Area
9484








SECOND FLOOR PLAN



GRAPHIC SCALE

Safety Legend

-  Areas of Refuge
-  Tornado Shelter Areas
-  Exit/Evacuation Routes
- In case of fire, do not use elevator*
-  AED Automatic External Defibrillator
-  CHAIR Evacuation Chair