

Emergency Evacuation Procedures

Welch Complex 1 (Fashion and Fibers)

405 S. Welch St. Denton, TX 76201

Severe Weather

In the event of severe weather, all building occupants should immediately seek shelter in the designated shelter-in-place area in the building. If unable to safely move to the designated shelter-in-place area, seek shelter in a windowless interior room or hallway on the lowest floor of the building.

All building occupants should take shelter in the most interior of the building, including the restrooms. If time permits, seek shelter in the Radio, TV, Film & Performing Arts (RTFP) Building.

Exit Welch St. Complex 1 via northwest exit and proceed to south side entrances of RTFP, proceed to interior halls and designated shelter areas.

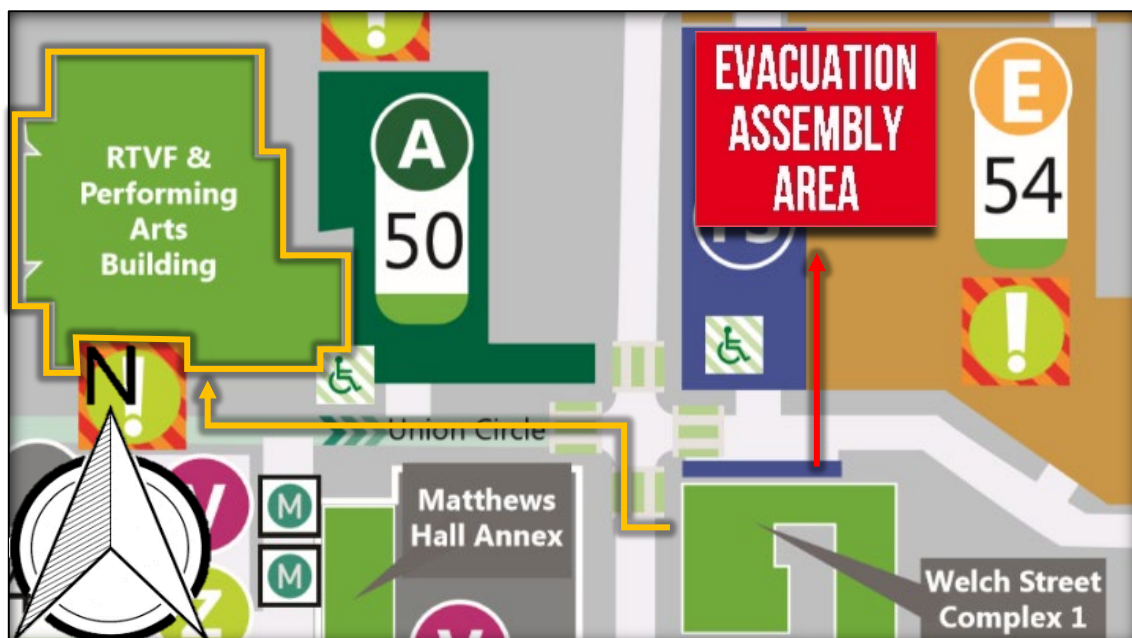
Avoid standing near windows, walls and doors made of glass.

Bomb Threat/Fire

In the event of a bomb threat or fire in the building, all building occupants should immediately evacuate the building using the nearest exit. Once outside, proceed to the designated assembly area. If unable to safely move to the designated assembly area, contact one or more members of your department or unit to let them know you are safe and inform them of your whereabouts.

Persons with mobility impairments who are unable to safely exit the building should move to a designated area of refuge and await assistance from emergency responders.

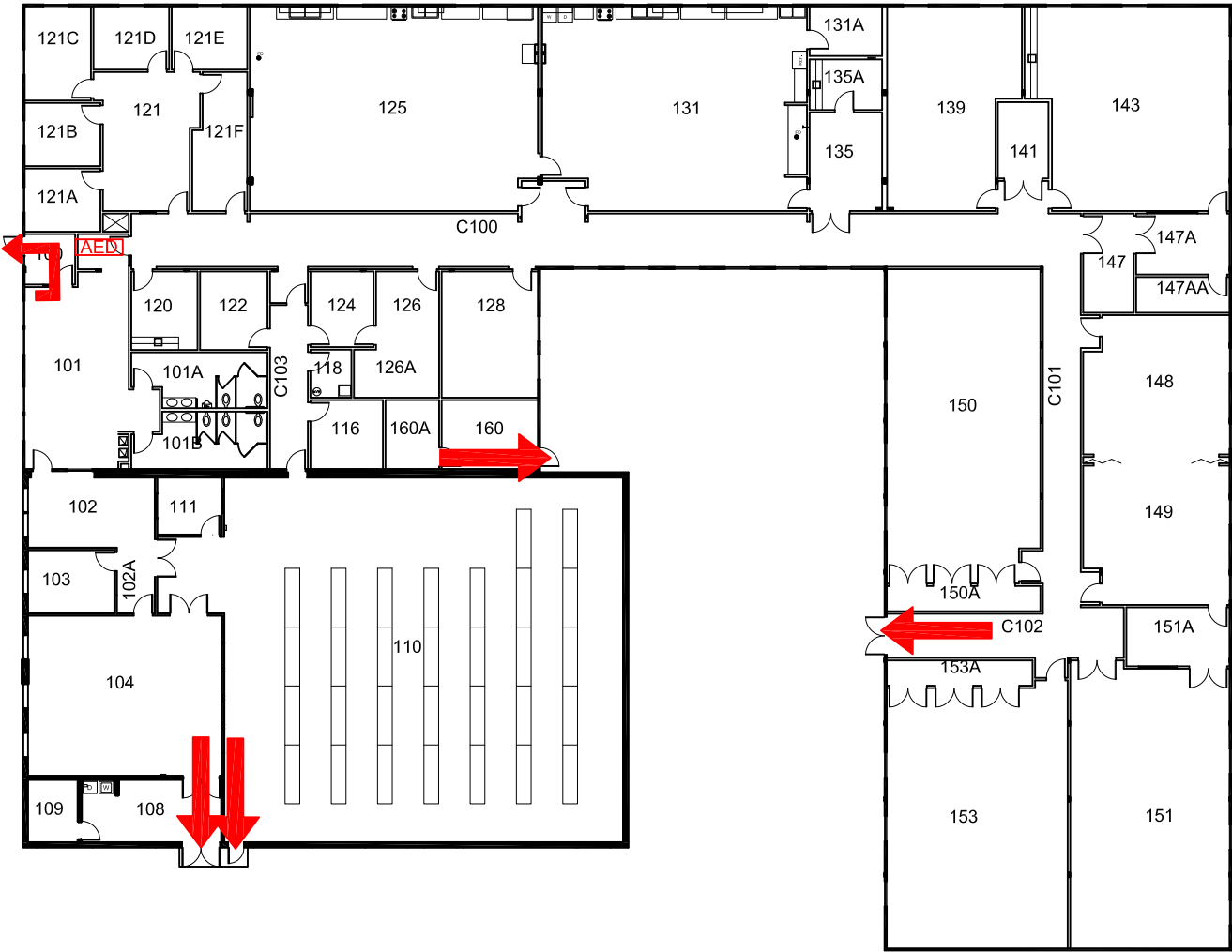
All building occupants should immediately evacuate the building and proceed to parking lot 54, north of the building.



WELCH STREET COMPLEX_BUILDING 1 (FASHION AND FIBERS)

BLDG #0158
07-2013

Exterior Gross Area
22338



- Safety Legend**
- Areas of Refuge
 - Tornado Shelter Areas
 - Exit/Evacuation Routes
In case of fire, do not use elevator
 - Automatic External Defibrillator
 - Evacuation Chair

N
 FIRST FLOOR PLAN

