

Emergency Evacuation Procedures

Victory Hall

1379 S. Bonnie Brae St. Denton, TX 76207

Severe Weather

In the event of severe weather, all building occupants should immediately seek shelter in the designated shelter-in-place area in the building. If unable to safely move to the designated shelter-in-place area, seek shelter in a windowless interior room or hallway on the lowest floor of the building.

- **North Wing 1st floor residents should shelter inside their restrooms. 2nd and 3rd floor North Wing residents should shelter on the first floor interior hallways.**
- **South Wing 1st and 2nd floor residents should shelter in their restrooms while 3rd and 4th floor residents shelter on the first floor interior hallways.**
- **All other building occupants should seek shelter in the interior hallways of the closest respective wing.**

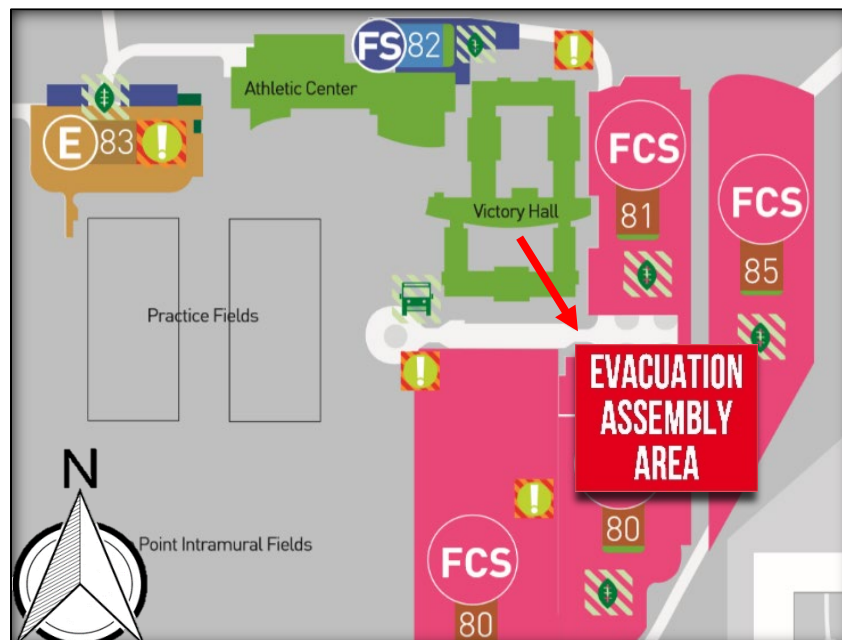
Avoid standing near windows, walls and doors made of glass.

Bomb Threat/Fire

In the event of a bomb threat or fire in the building, all building occupants should immediately evacuate the building using the nearest exit. Once outside, proceed to the designated assembly area. If unable to safely move to the designated assembly area, contact one or more members of your department or unit to let them know you are safe and inform them of your whereabouts.

Persons with mobility impairments who are unable to safely exit the building should move to a designated area of refuge and await assistance from emergency responders.

All building occupants should immediately evacuate the building and proceed southeast to parking lot 80.







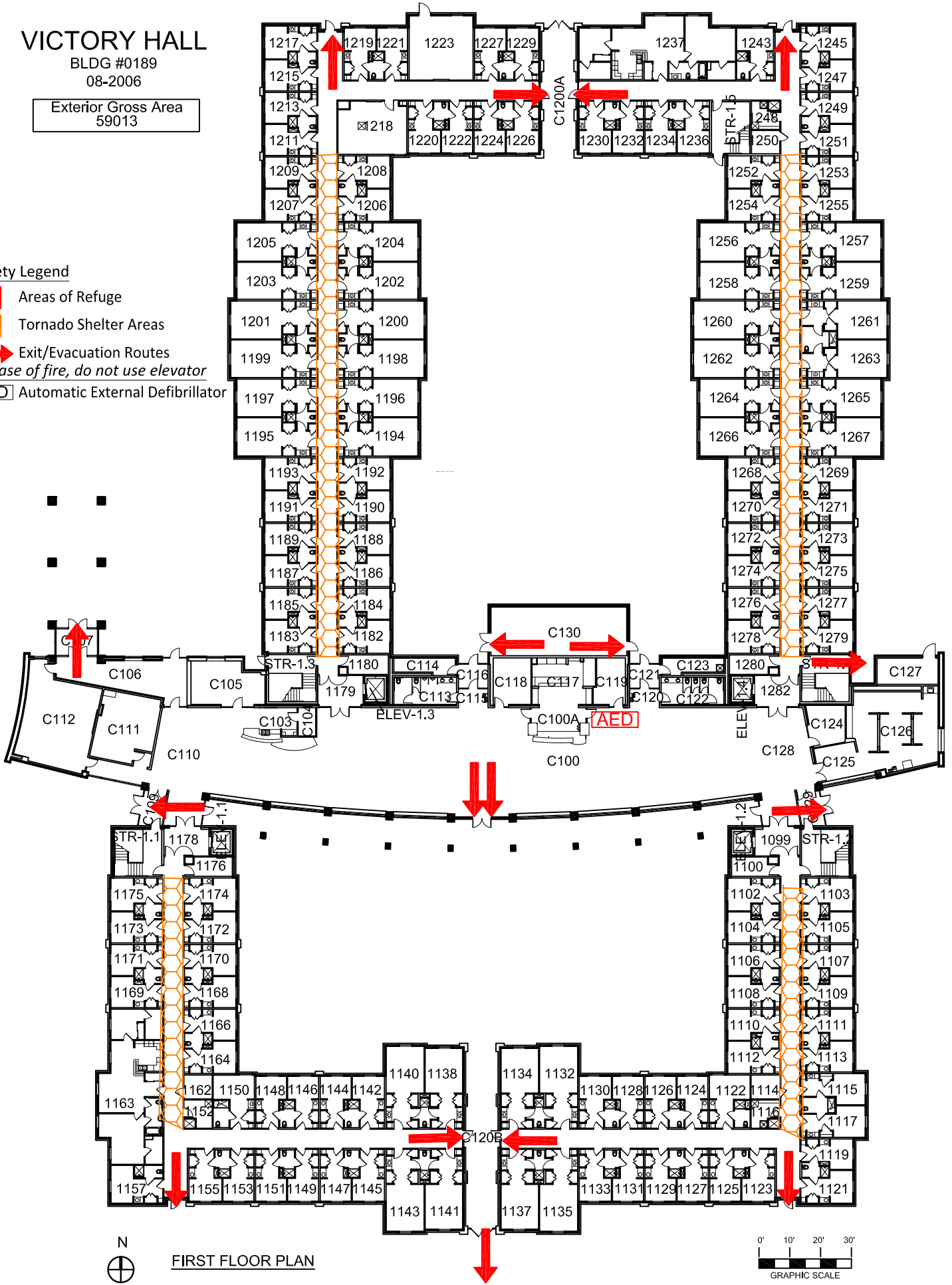
VICTORY HALL

BLDG #0189
08-2006

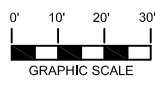
Exterior Gross Area
59013

Safety Legend

-  Areas of Refuge
-  Tornado Shelter Areas
-  Exit/Evacuation Routes
- In case of fire, do not use elevator*
-  Automatic External Defibrillator



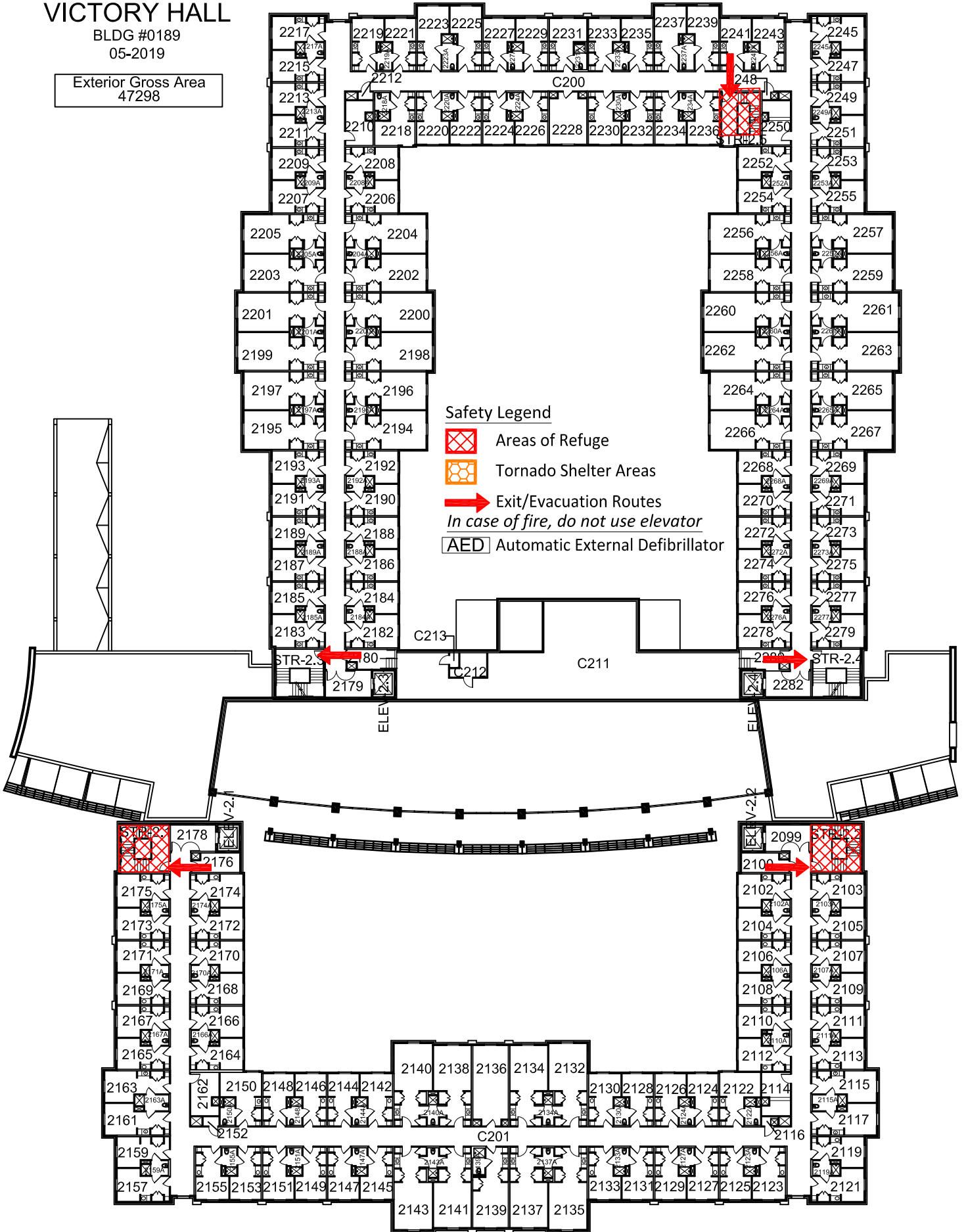
FIRST FLOOR PLAN





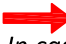
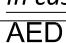
VICTORY HALL

BLDG #0189
05-2019

Exterior Gross Area
47298

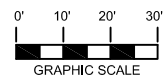


Safety Legend

-  Areas of Refuge
-  Tornado Shelter Areas
-  Exit/Evacuation Routes
- In case of fire, do not use elevator*
-  AED Automatic External Defibrillator



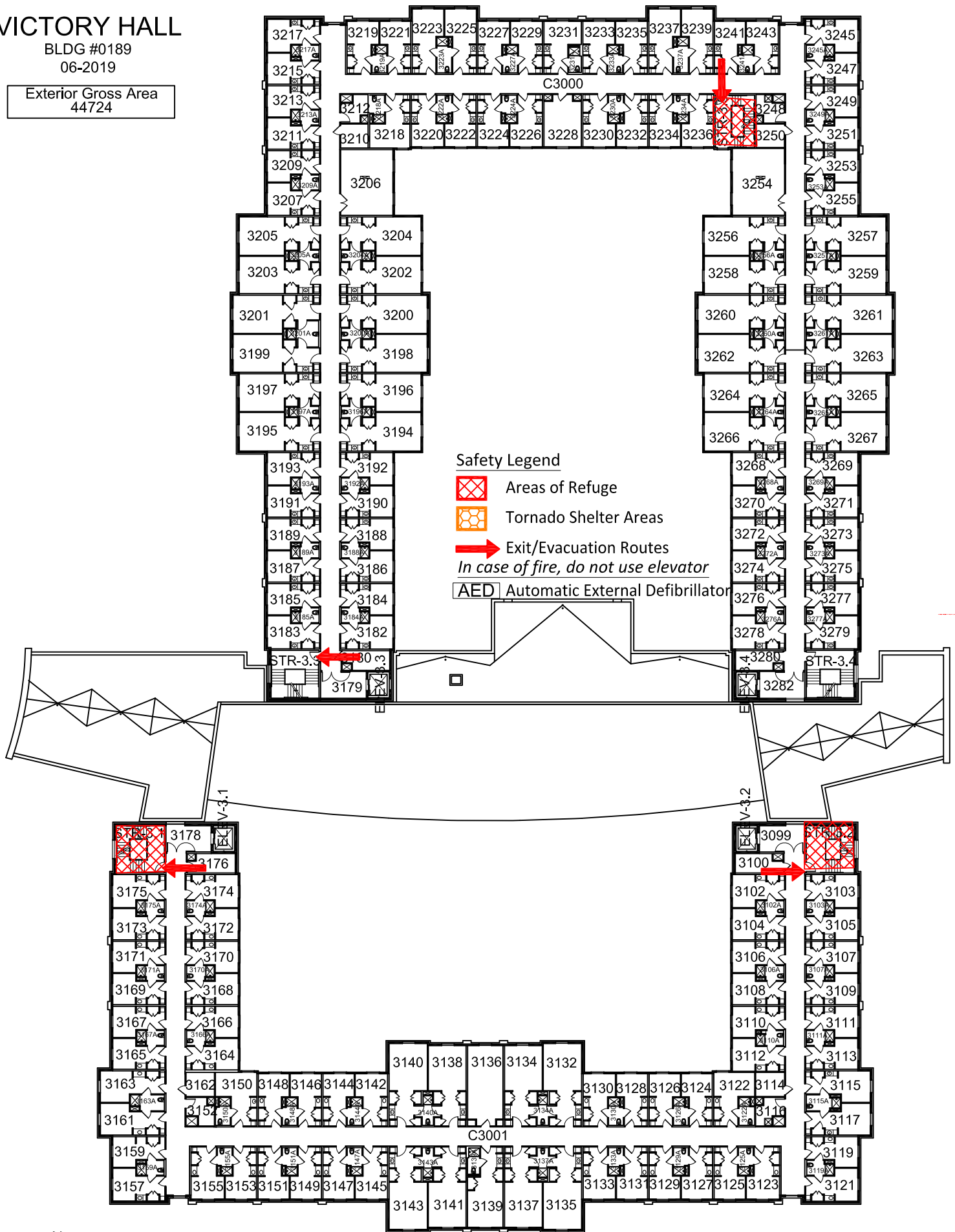
SECOND FLOOR PLAN






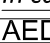
VICTORY HALL

BLDG #0189
06-2019

Exterior Gross Area
44724

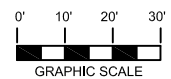


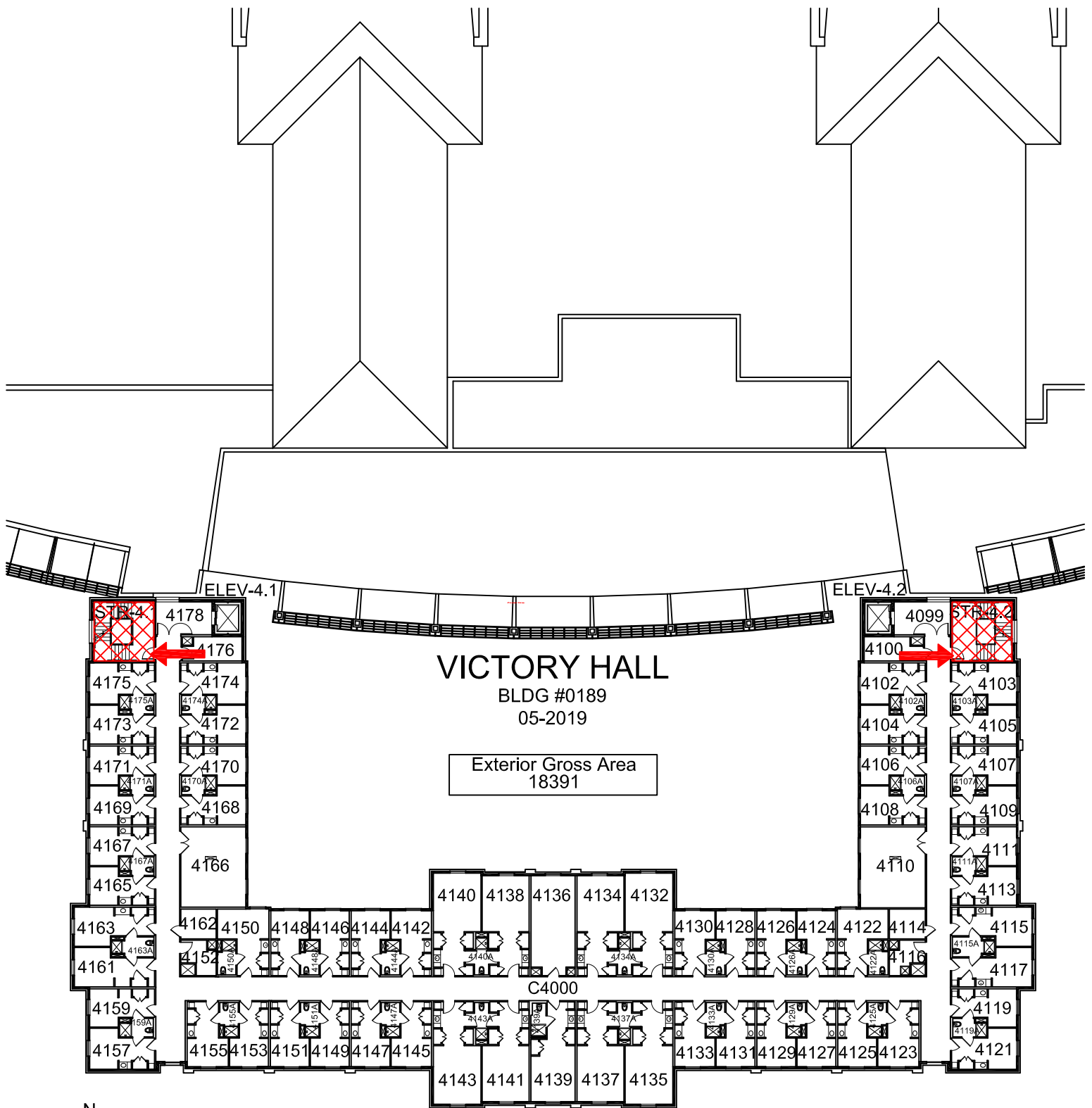
Safety Legend

-  Areas of Refuge
-  Tornado Shelter Areas
-  Exit/Evacuation Routes
- In case of fire, do not use elevator*
-  Automatic External Defibrillator



THIRD FLOOR PLAN







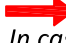

VICTORY HALL
 BLDG #0189
 05-2019

Exterior Gross Area
 18391

C4000

FOURTH FLOOR PLAN

Safety Legend

-  Areas of Refuge
-  Tornado Shelter Areas
-  Exit/Evacuation Routes
- In case of fire, do not use elevator*
-  Automatic External Defibrillator