

Emergency Evacuation Procedures

UNT on the Square

109 N Elm St. Denton, TX 76201

Severe Weather

In the event of severe weather, all building occupants should immediately seek shelter in the designated shelter-in-place area in the building. If unable to safely move to the designated shelter-in-place area, seek shelter in a windowless interior room or hallway on the lowest floor of the building.

All building occupants should take shelter the interior room on the lowest floor. Avoid standing near windows, walls and doors made of glass.

Bomb Threat/Fire

In the event of a bomb threat or fire in the building, all building occupants should immediately evacuate the building using the nearest exit. Once outside, proceed to the designated assembly area. If unable to safely move to the designated assembly area, contact one or more members of your department or unit to let them know you are safe and inform them of your whereabouts.

Persons with mobility impairments who are unable to safely exit the building should move to a designated area of refuge and await assistance from emergency responders.

All building occupants should immediately evacuate the building and proceed to the north east grassy area of the Denton County Courthouse on the Square.

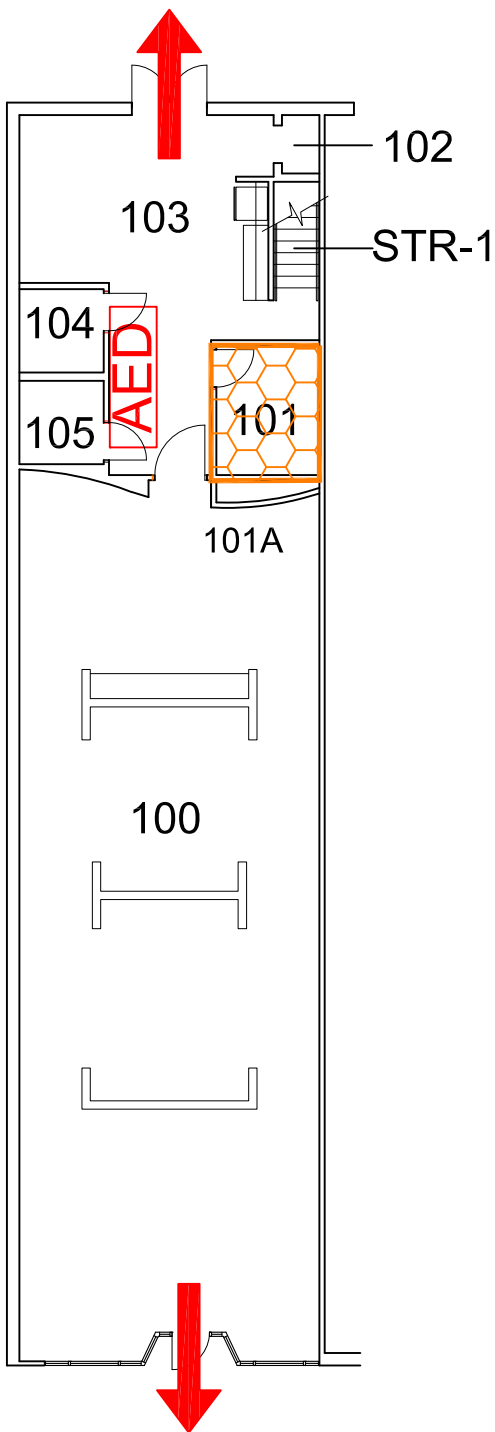


UNT ON THE SQUARE

BLDG # 0165

12-2016

Exterior Gross Area
2552



Safety Legend



Tornado Shelter Areas



Exit/Evacuation Routes

In case of fire, do not use elevator



Automatic External Defibrillator



FIRST FLOOR PLAN



GRAPHIC SCALE

UNT ON THE SQUARE

BLDG # 0165
012-2016

Exterior Gross Area
809

Safety Legend



Tornado Shelter Areas

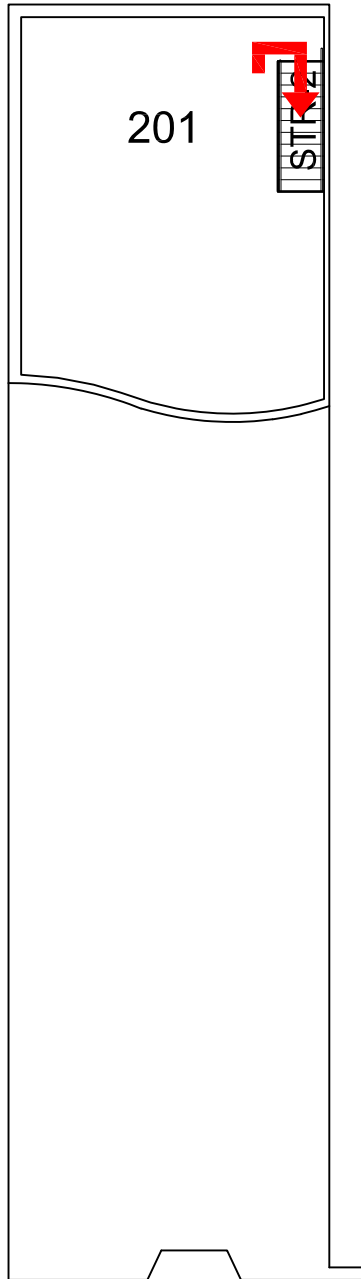


Exit/Evacuation Routes

In case of fire, do not use elevator



Automatic External Defibrillator



SECOND FLOOR PLAN



GRAPHIC SCALE