

Emergency Evacuation Procedures

University Machine Shop

915 W. Mulberry St. Denton TX, 76201

Severe Weather

In the event of severe weather, all building occupants should immediately seek shelter in the designated shelter-in-place area in the building. If unable to safely move to the designated shelter-in-place area, seek shelter in a windowless interior room or hallway on the lowest floor of the building.

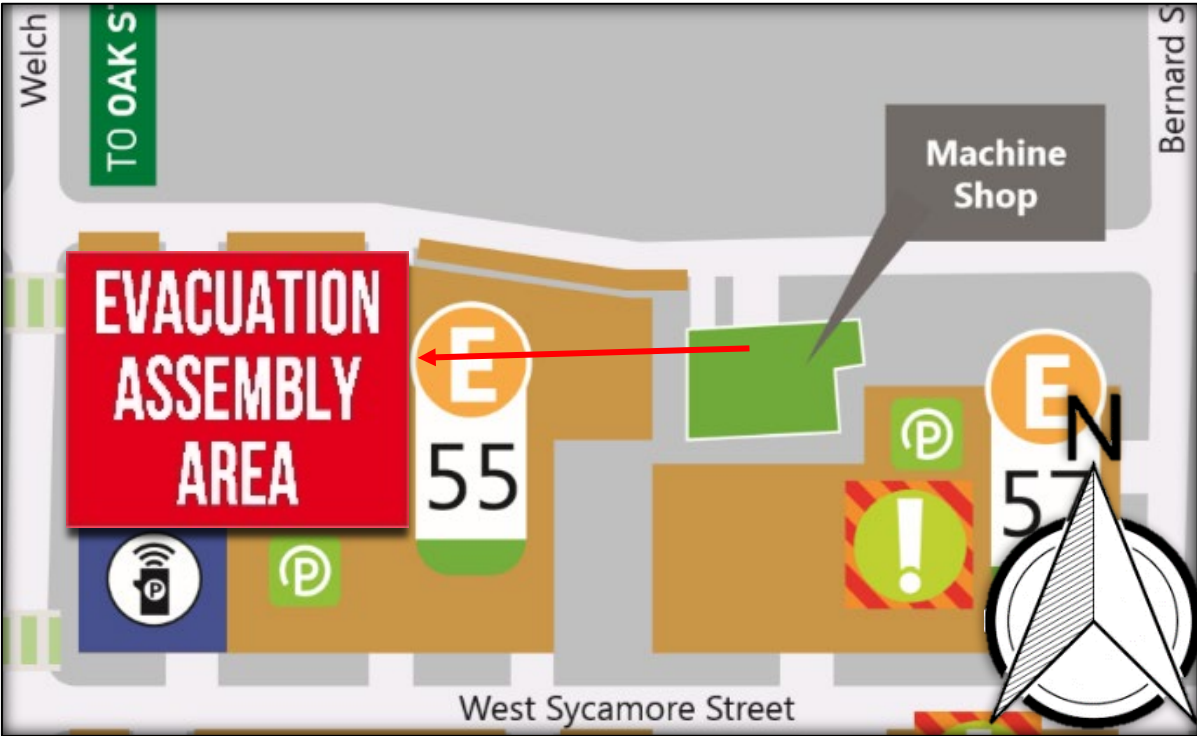
All building occupants should take shelter in rooms 102, 103, 106 and 107 including the interior hallway. Avoid standing near windows, walls and doors made of glass.

Bomb Threat/Fire

In the event of a bomb threat or fire in the building, all building occupants should immediately evacuate the building using the nearest exit. Once outside, proceed to the designated assembly area. If unable to safely move to the designated assembly area, contact one or more members of your department or unit to let them know you are safe and inform them of your whereabouts.

Persons with mobility impairments who are unable to safely exit the building should move to a designated area of refuge and await assistance from emergency responders.

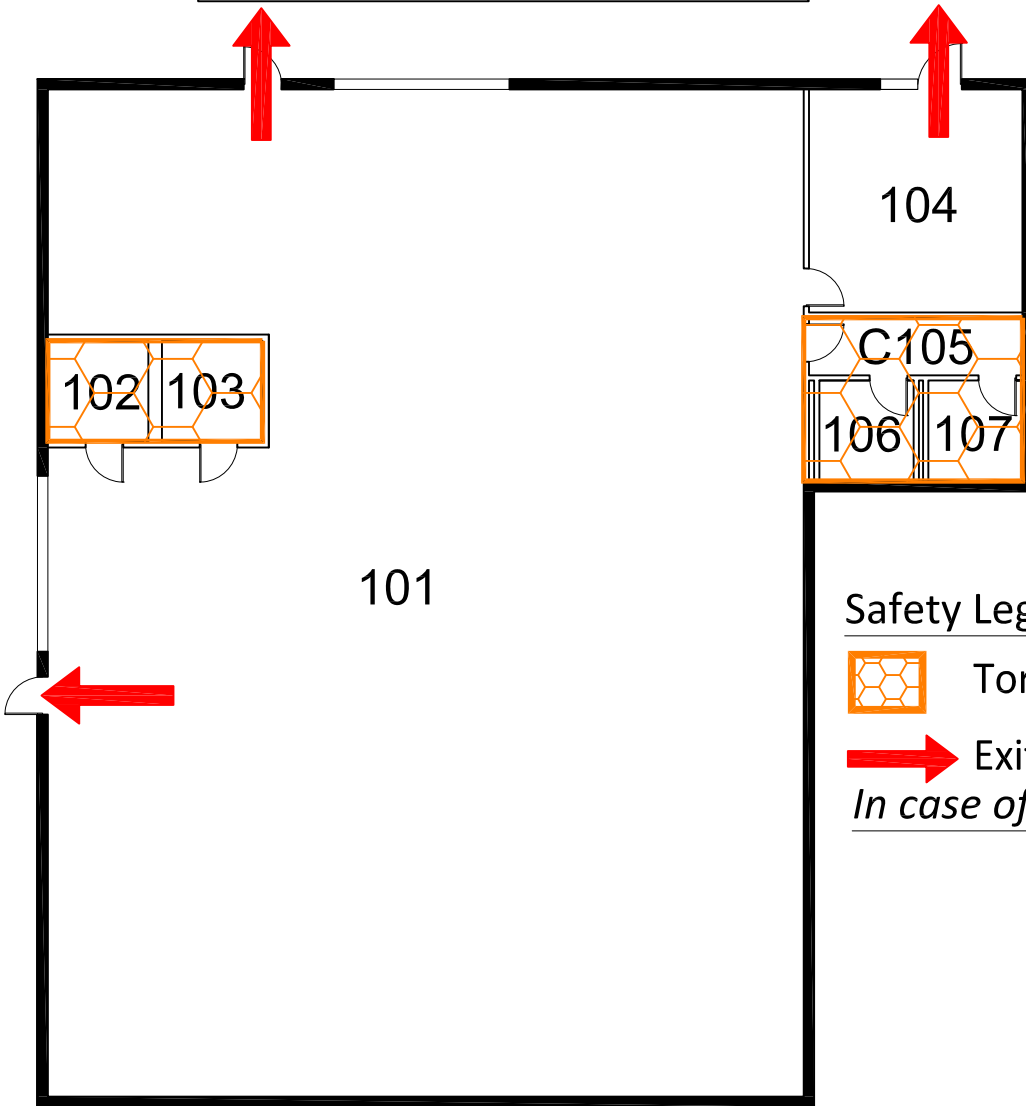
All building occupants should immediately evacuate the building and proceed to parking lot 55 west of the Machine Shop.



UNIVERSITY MACHINE SHOP

BUILDING # 0550
01- 2007

Exterior Gross Area
5632



Safety Legend

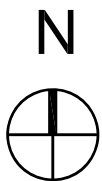


Tornado Shelter Areas



Exit/Evacuation Routes

In case of fire, do not use elevator



FIRST FLOOR PLAN

