

Emergency Evacuation Procedures

Traditions Hall

502 North Texas Blvd. Denton, TX 76201

Severe Weather

In the event of severe weather, all building occupants should immediately seek shelter in the designated shelter-in-place area in the building. If unable to safely move to the designated shelter-in-place area, seek shelter in a windowless interior room or hallway on the lowest floor of the building.

All building occupants should take shelter the interior hallways and restrooms on the lowest floor of their respective wing.

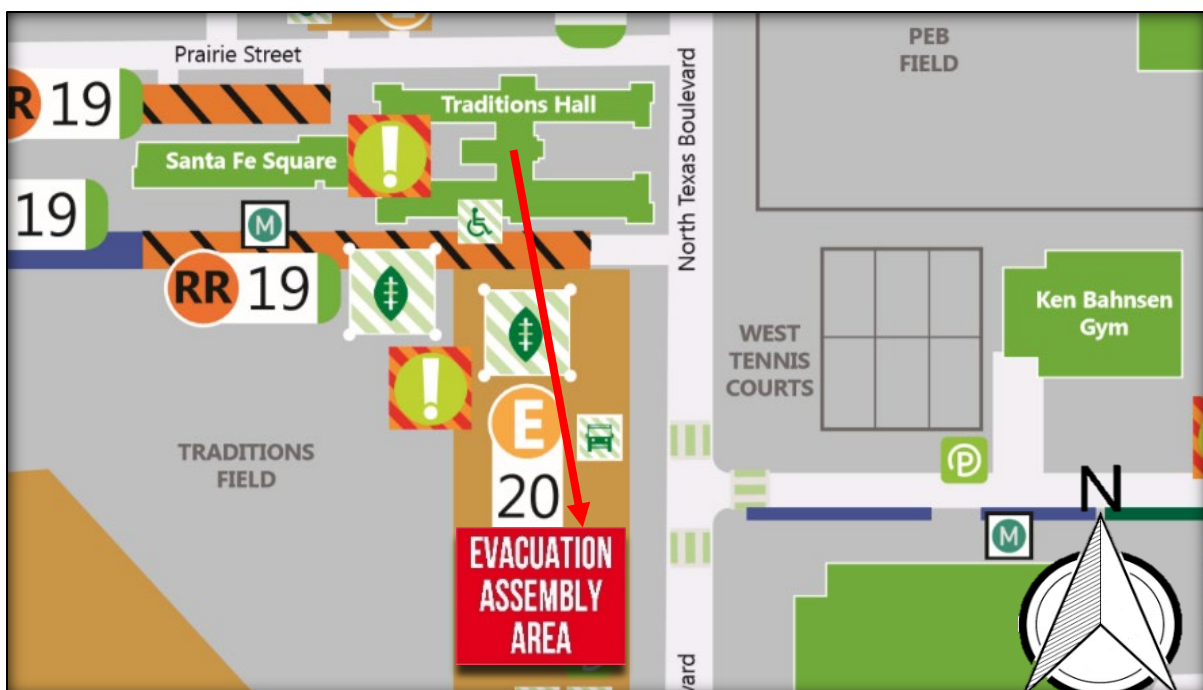
Avoid standing near windows, walls and doors made of glass.

Bomb Threat/Fire

In the event of a bomb threat or fire in the building, all building occupants should immediately evacuate the building using the nearest exit. Once outside, proceed to the designated assembly area. If unable to safely move to the designated assembly area, contact one or more members of your department or unit to let them know you are safe and inform them of your whereabouts.

Persons with mobility impairments who are unable to safely exit the building should move to a designated area of refuge and await assistance from emergency responders.

All building occupants should immediately evacuate the building and proceed to parking lot 20 south of Traditions Hall.

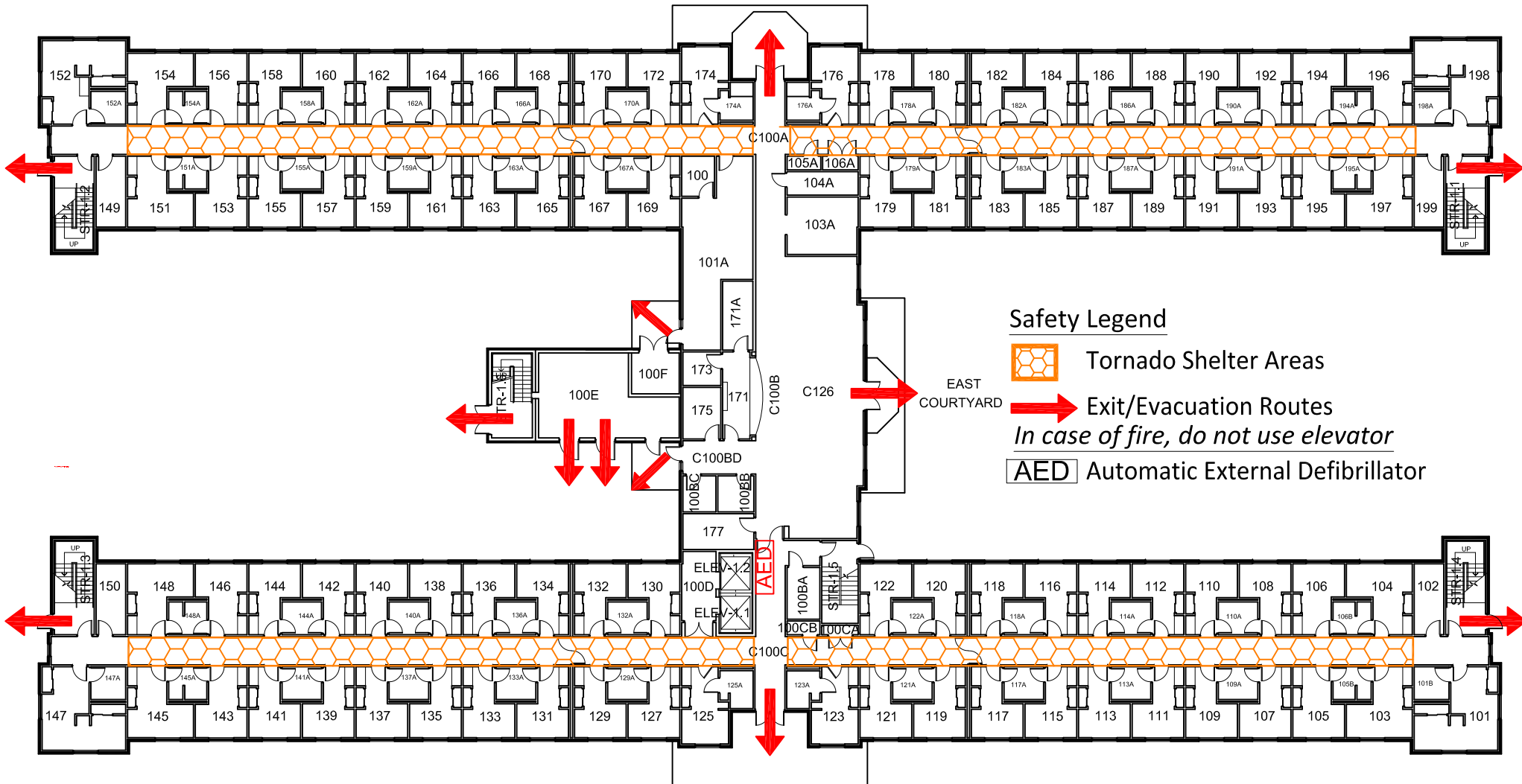


TRADITIONS HALL


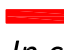

BUILDING # 0187

05-2019

Exterior Gross Area
27577

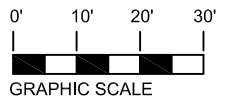


Safety Legend

-  Tornado Shelter Areas
-  Exit/Evacuation Routes
In case of fire, do not use elevator
-  AED Automatic External Defibrillator



FIRST FLOOR PLAN

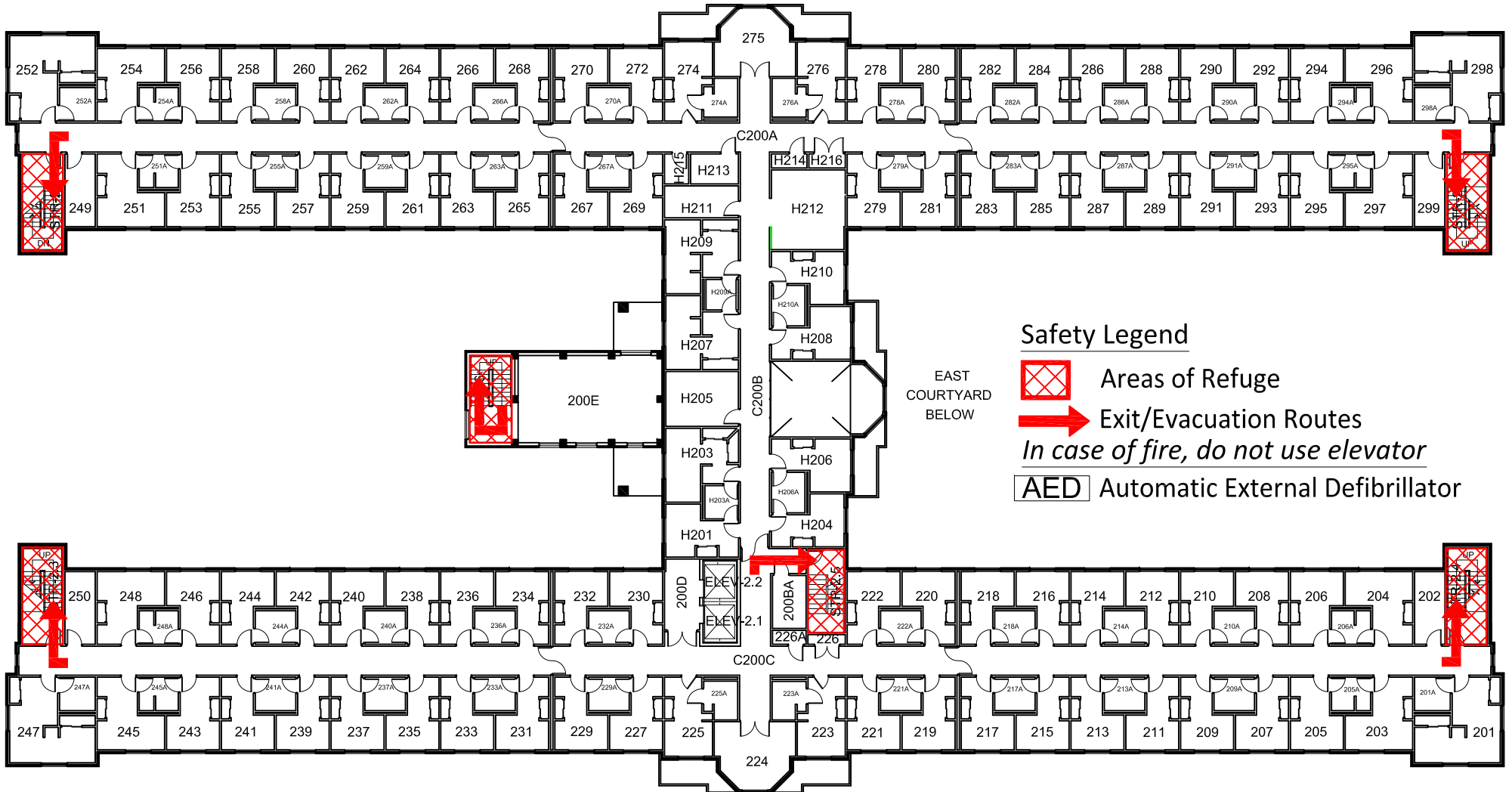


TRADITIONS HALL




BUILDING # 0187

05-2019

Exterior Gross Area
27527

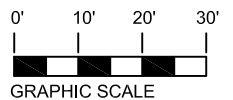


Safety Legend

-  Areas of Refuge
-  Exit/Evacuation Routes
In case of fire, do not use elevator
-  AED Automatic External Defibrillator



SECOND FLOOR PLAN

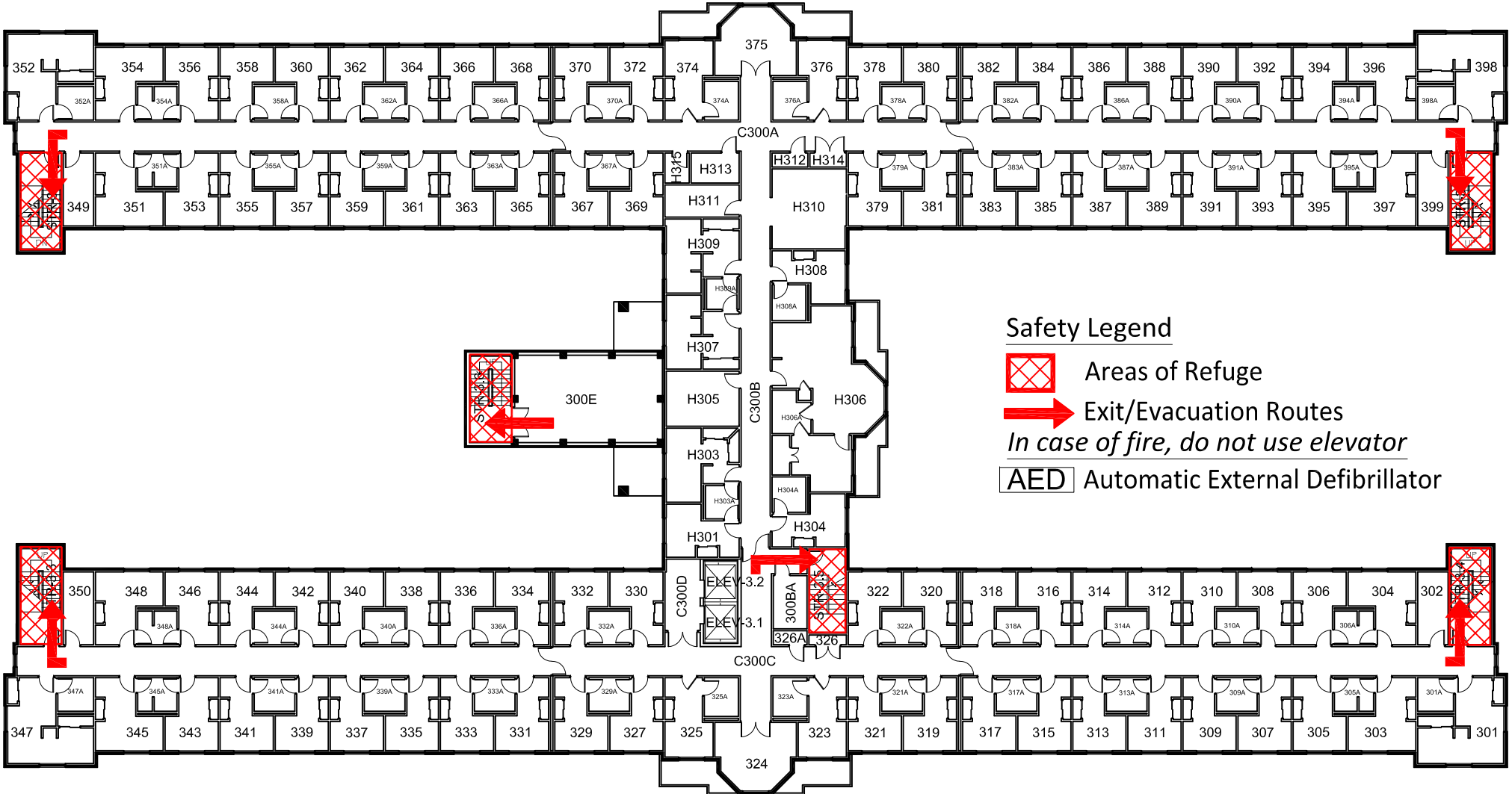


TRADITIONS HALL




BUILDING # 0187

05-2019

Exterior Gross Area
27883



Safety Legend

-  Areas of Refuge
-  Exit/Evacuation Routes
- In case of fire, do not use elevator*
-  AED Automatic External Defibrillator



THIRD FLOOR PLAN

