

Emergency Evacuation Procedures

Kappa Delta (House G)

990 West Highland St. Denton, TX 76201

Severe Weather

In the event of severe weather, all building occupants should immediately seek shelter in the designated shelter-in-place area in the building. If unable to safely move to the designated shelter-in-place area, seek shelter in a windowless interior room or hallway on the lowest floor of the building.

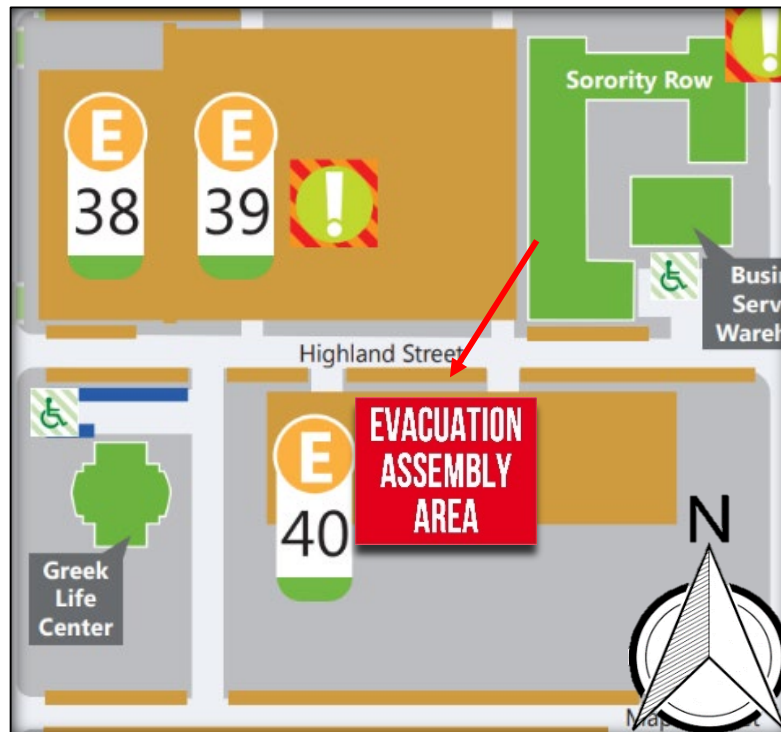
All building occupants should take shelter on the first floor hallways at the east and west ends of the building. Avoid standing near windows, walls and doors made of glass.

Bomb Threat/Fire

In the event of a bomb threat or fire in the building, all building occupants should immediately evacuate the building using the nearest exit. Once outside, proceed to the designated assembly area. If unable to safely move to the designated assembly area, contact one or more members of your department or unit to let them know you are safe and inform them of your whereabouts.

Persons with mobility impairments who are unable to safely exit the building should move to a designated area of refuge and await assistance from emergency responders.

All building occupants should immediately evacuate the building and proceed to the Greek Life Center parking lot 40.

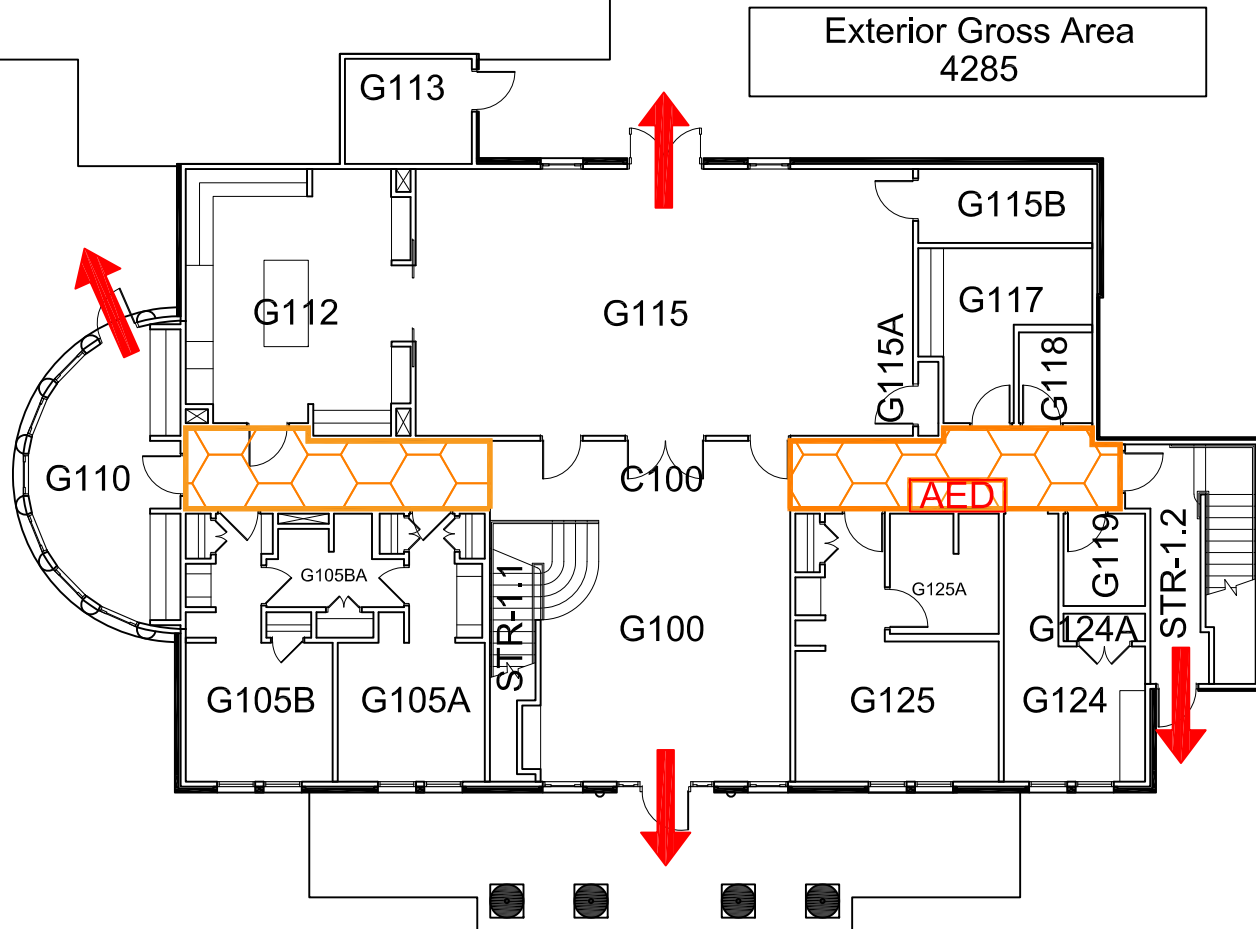


SORORITY HOUSE G

BUILDING # 0356

05-2019

Exterior Gross Area
4285

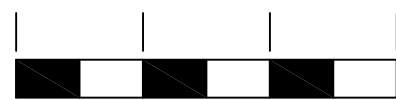


N



FIRST FLOOR PLAN

0' 10' 20' 30'



GRAPHIC SCALE

Safety Legend



Areas of Refuge



Tornado Shelter Areas



Exit/Evacuation Routes

In case of fire, do not use elevator



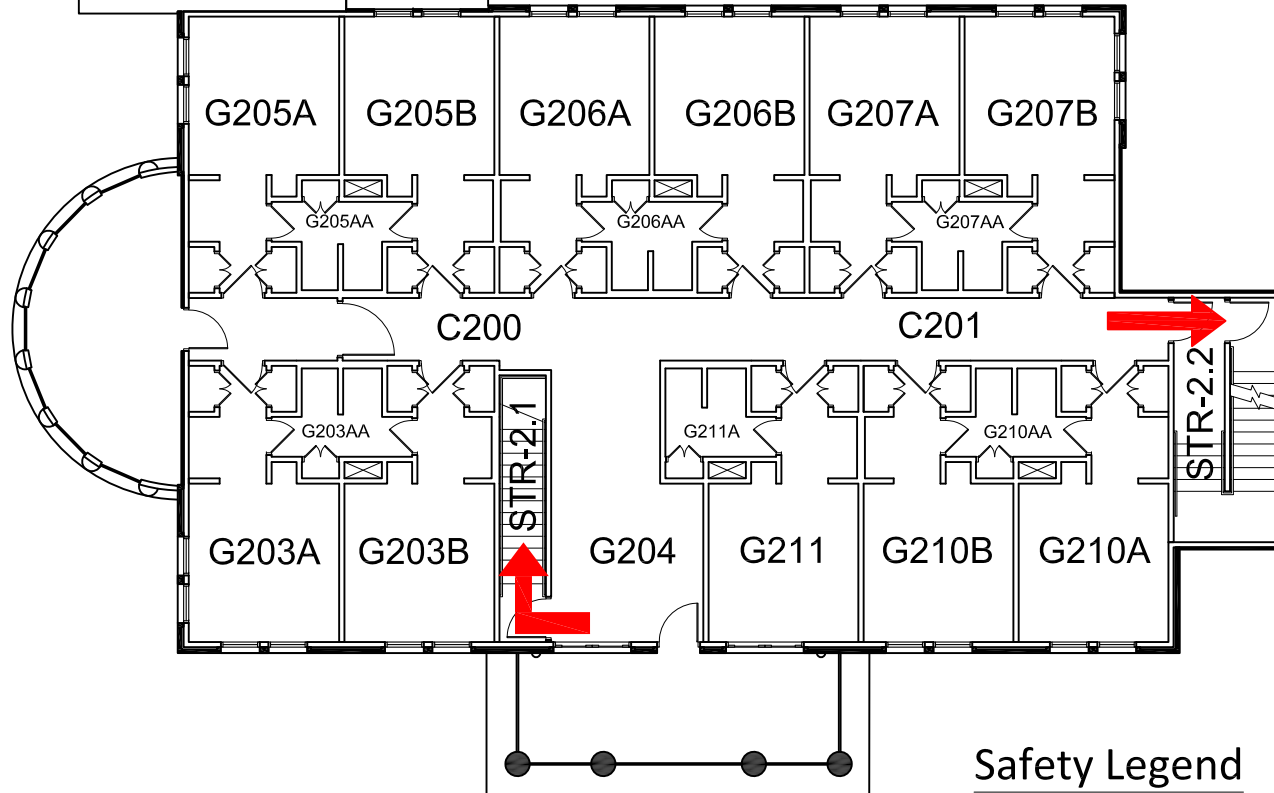
Automatic External Defibrillator

SORORITY HOUSE G

BUILDING # 0356

05-2019

Exterior Gross Area
3931



N



SECOND FLOOR PLAN

0' 10' 20' 30'



GRAPHIC SCALE

Safety Legend



Areas of Refuge



Tornado Shelter Areas



Exit/Evacuation Routes

In case of fire, do not use elevator



AED Automatic External Defibrillator