

Emergency Evacuation Procedures

Alpha Delta Pi (House C)

911 W. Prairie St. Denton, TX 76201

Severe Weather

In the event of severe weather, all building occupants should immediately seek shelter in the designated shelter-in-place area in the building. If unable to safely move to the designated shelter-in-place area, seek shelter in a windowless interior room or hallway on the lowest floor of the building.

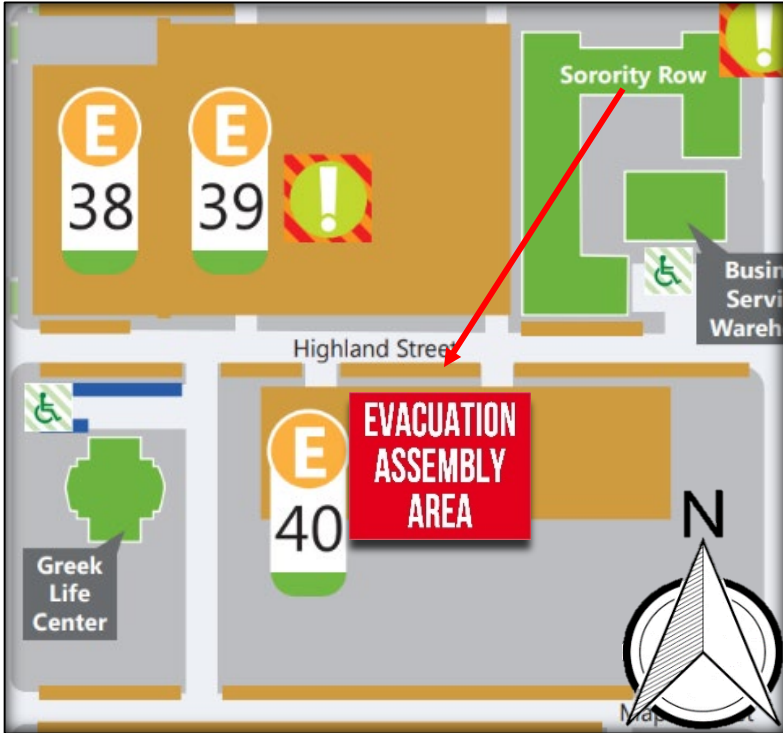
All building occupants should take shelter on the first floor in the east and west ends of the center hallway. Avoid standing near windows, walls and doors made of glass.

Bomb Threat/Fire

In the event of a bomb threat or fire in the building, all building occupants should immediately evacuate the building using the nearest exit. Once outside, proceed to the designated assembly area. If unable to safely move to the designated assembly area, contact one or more members of your department or unit to let them know you are safe and inform them of your whereabouts.

Persons with mobility impairments who are unable to safely exit the building should move to a designated area of refuge and await assistance from emergency responders.

All building occupants should immediately evacuate the building and proceed to the Greek Life Center parking lot 40.



SORORITY HOUSE C

BUILDING # 0352

05-2019

Safety Legend



Areas of Refuge



Tornado Shelter Areas



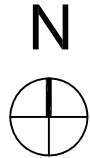
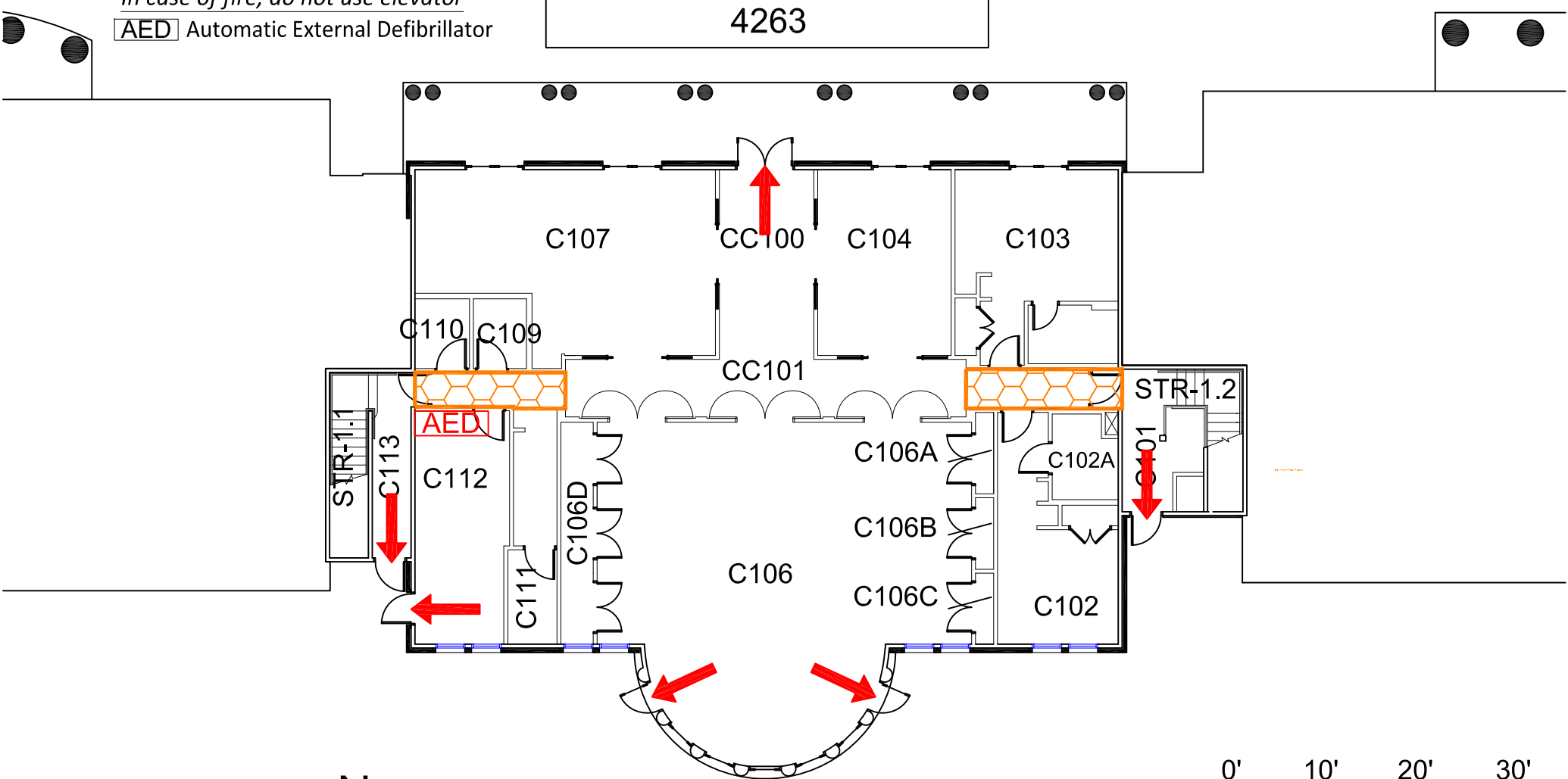
Exit/Evacuation Routes

In case of fire, do not use elevator

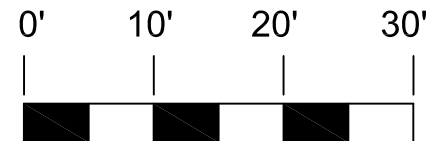


AED Automatic External Defibrillator

Exterior Gross Area
4263



FIRST FLOOR PLAN



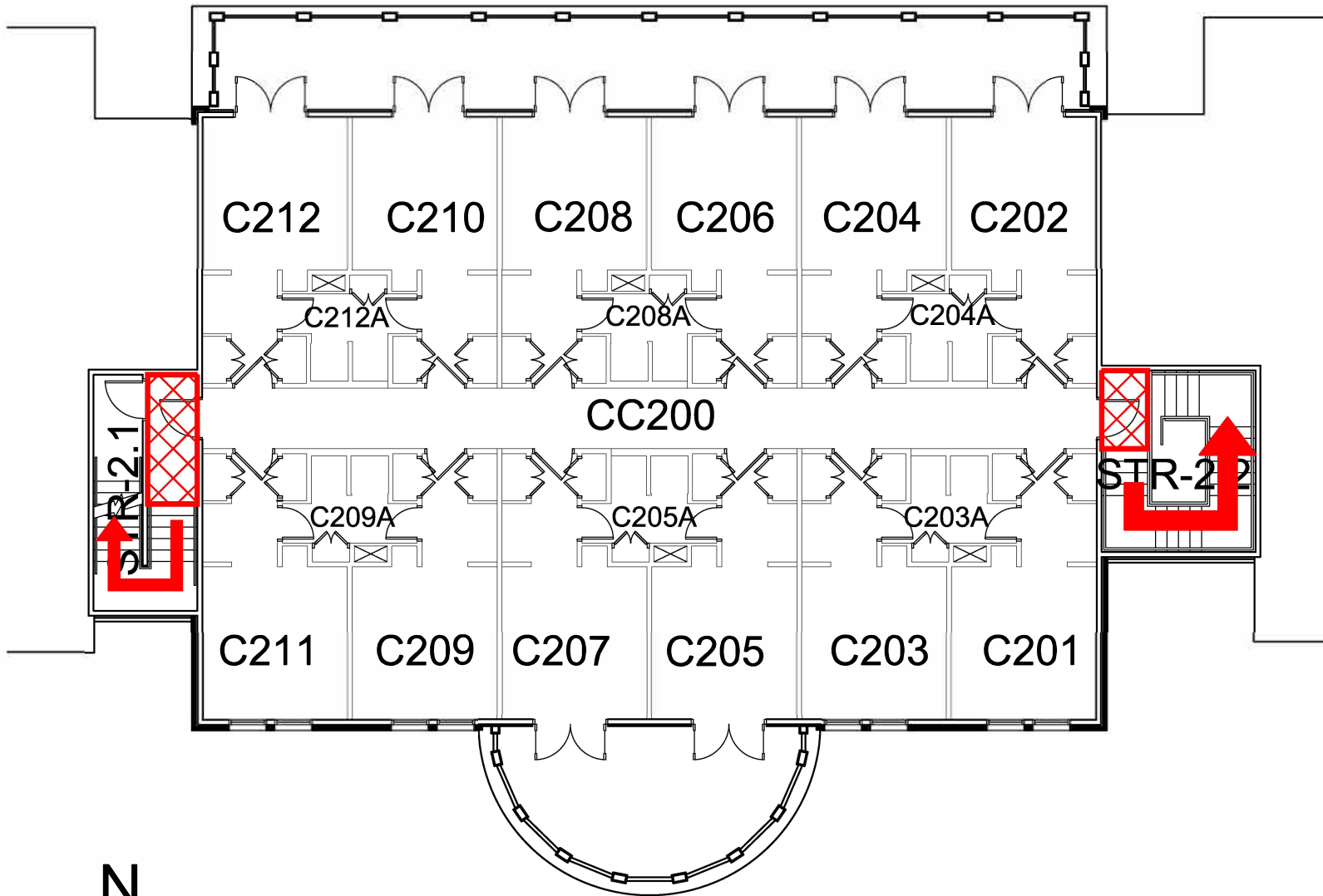
GRAPHIC SCALE

SORORITY HOUSE C

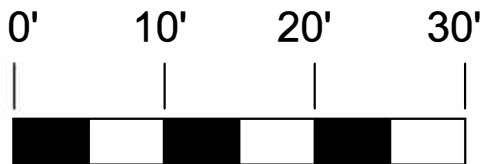
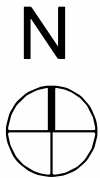
BUILDING # 0352

05-2019

Exterior Gross Area
3969







SECOND FLOOR PLAN



GRAPHIC SCALE

Safety Legend

-  Areas of Refuge
-  Tornado Shelter Areas
-  Exit/Evacuation Routes
In case of fire, do not use elevator
-  AED Automatic External Defibrillator