

Emergency Evacuation Procedures

Science Research Building

1504 W. Mulberry St. Denton, TX 76201

Severe Weather

In the event of severe weather, all building occupants should immediately seek shelter in the designated shelter-in-place area in the building. If unable to safely move to the designated shelter-in-place area, seek shelter in a windowless interior room or hallway on the lowest floor of the building.

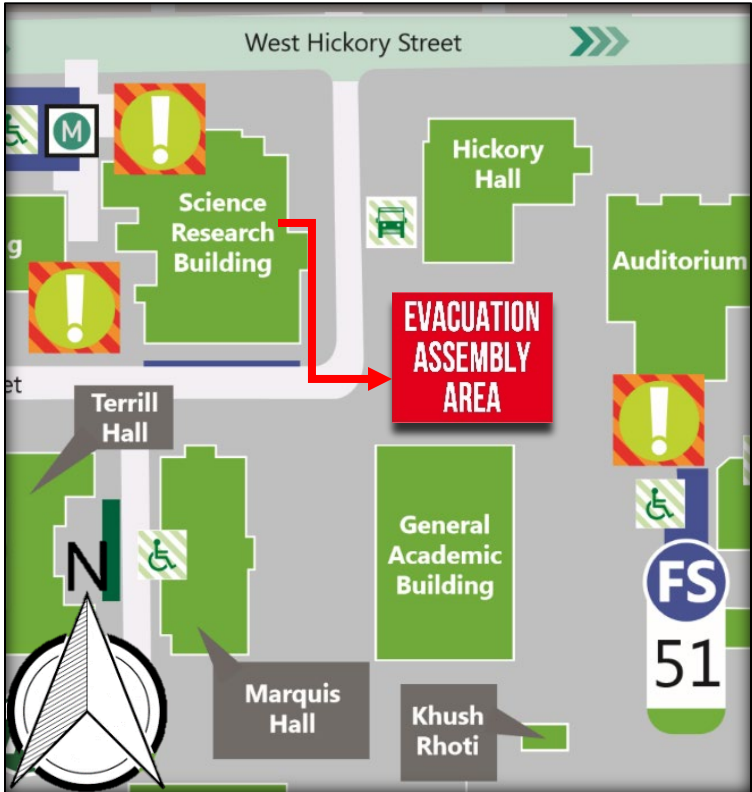
All building occupants should take shelter in the interior hallway on the 1st floor (lower level) of the building. Avoid standing near windows, walls and doors made of glass.

Bomb Threat/Fire

In the event of a bomb threat or fire in the building, all building occupants should immediately evacuate the building using the nearest exit. Once outside, proceed to the designated assembly area. If unable to safely move to the designated assembly area, contact one or more members of your department or unit to let them know you are safe and inform them of your whereabouts.

Persons with mobility impairments who are unable to safely exit the building should move to a designated area of refuge and await assistance from emergency responders.

All building occupants should immediately evacuate the building and proceed to the south side of the building in the grassy area north of the General Academic Building.

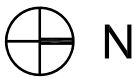
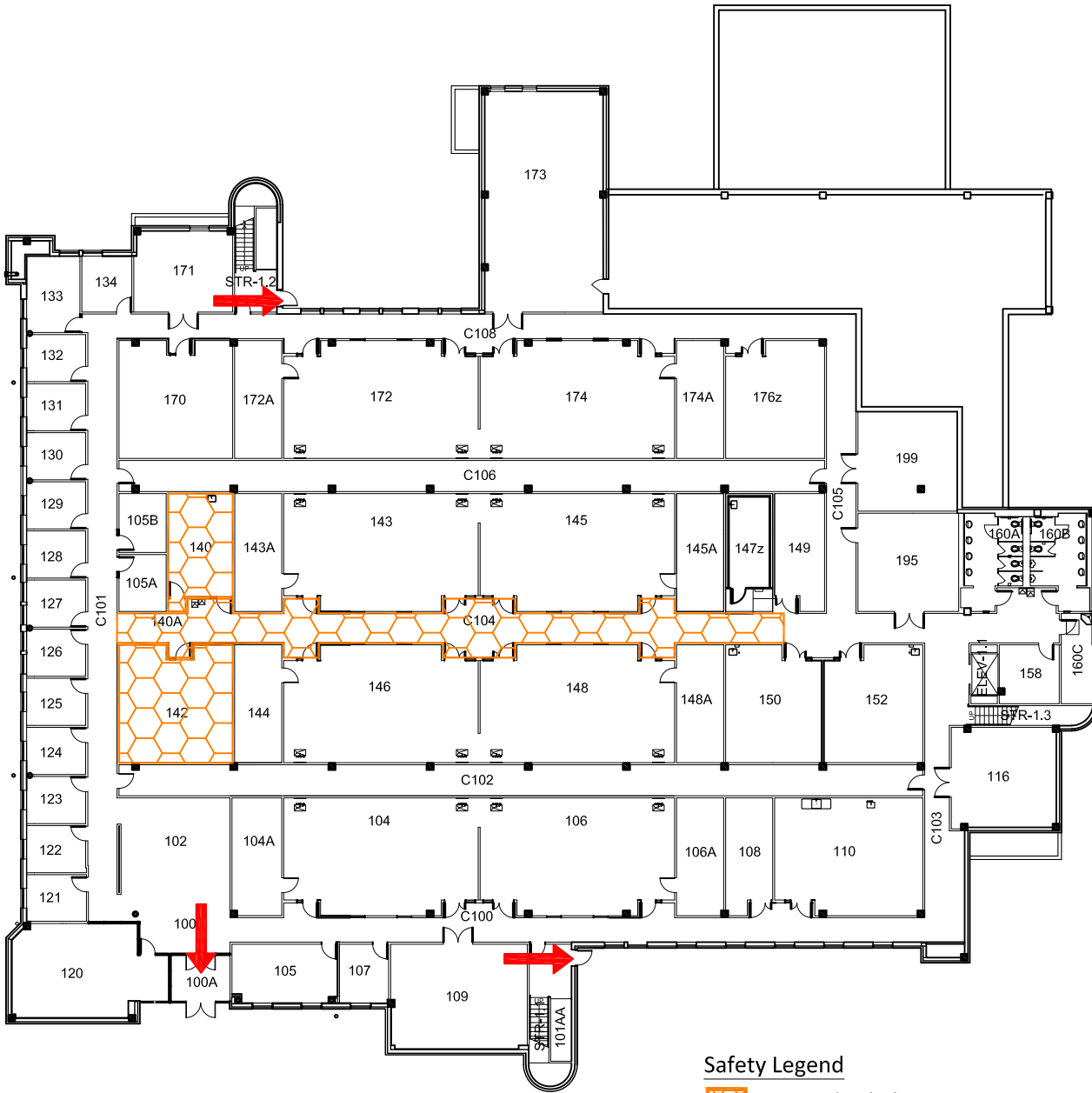


SCIENCE RESEARCH BLDG

BUILDING #0103




02-2018

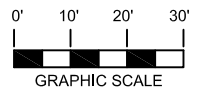
Exterior Gross Area
30372



FIRST FLOOR PLAN

Safety Legend

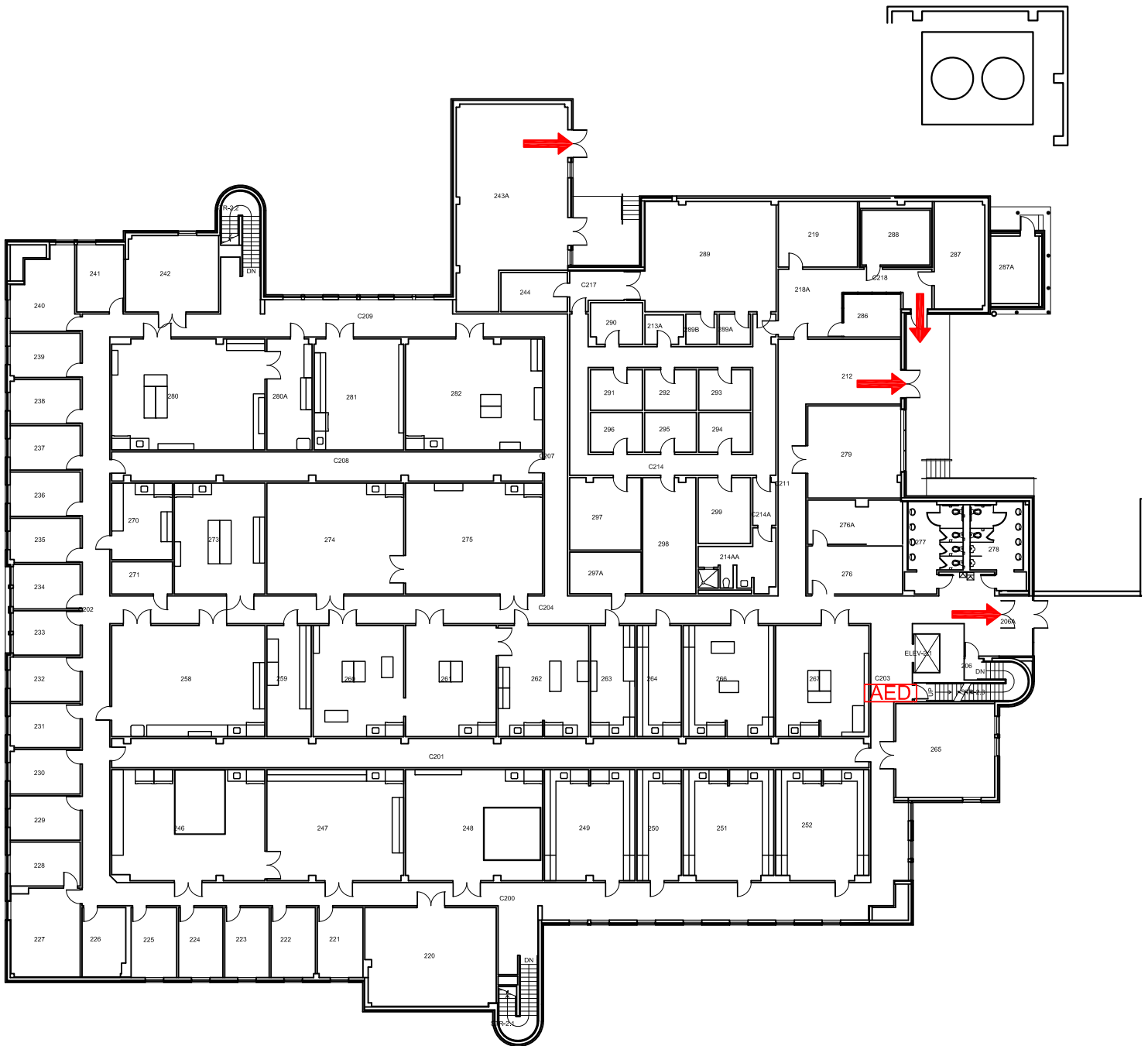
-  Tornado Shelter Areas
-  Exit/Evacuation Routes
In case of fire, do not use elevator
-  AED Automatic External Defibrillator



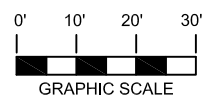
SCIENCE RESEARCH BLDG

BUILDING #0103




12-2016



SECOND FLOOR PLAN



Safety Legend

-  Tornado Shelter Areas
-  Exit/Evacuation Routes
- In case of fire, do not use elevator*
-  Automatic External Defibrillator