

Emergency Evacuation Procedures

Santa Fe Square Hall

2201 W. Prairie St. Denton, TX 76201

Severe Weather

In the event of severe weather, all building occupants should immediately seek shelter in the designated shelter-in-place area in the building. If unable to safely move to the designated shelter-in-place area, seek shelter in a windowless interior room or hallway on the lowest floor of the building.

All building occupants should take shelter the interior hallways and restrooms on the lowest floor of their respective wing.

Avoid standing near windows, walls and doors made of glass.

Bomb Threat/Fire

In the event of a bomb threat or fire in the building, all building occupants should immediately evacuate the building using the nearest exit. Once outside, proceed to the designated assembly area. If unable to safely move to the designated assembly area, contact one or more members of your department or unit to let them know you are safe and inform them of your whereabouts.

Persons with mobility impairments who are unable to safely exit the building should move to a designated area of refuge and await assistance from emergency responders.

All building occupants should immediately evacuate the building and proceed to parking lot 20 south of Traditions Hall.

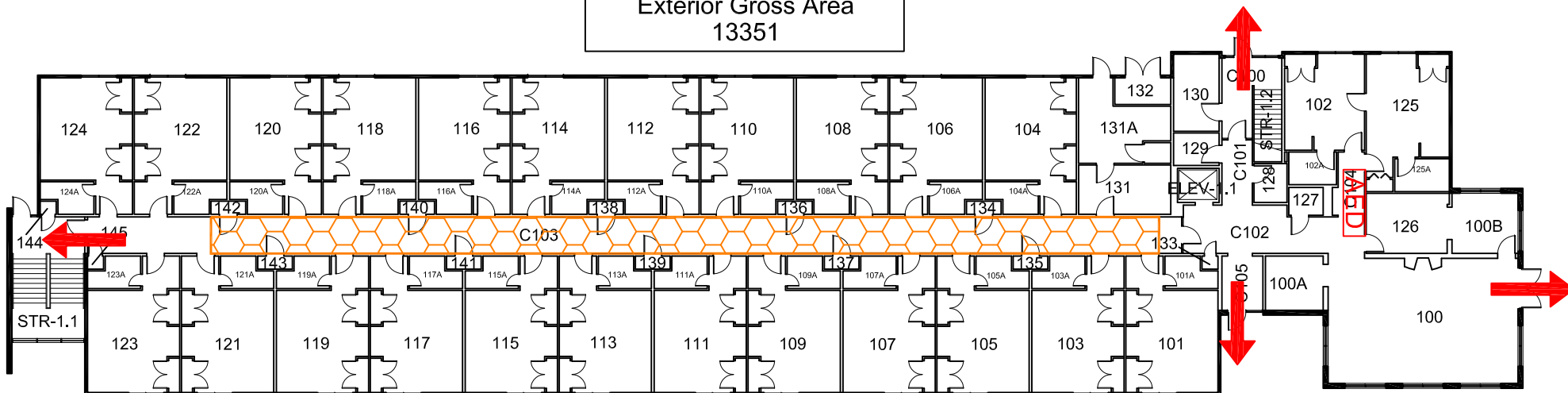


SANTA FE SQUARE

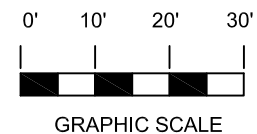
BLDG #0185

04-2019

Exterior Gross Area
13351



FIRST FLOOR PLAN



Safety Legend



Areas of Refuge



Tornado Shelter Areas



Exit/Evacuation Routes

In case of fire, do not use elevator



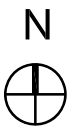
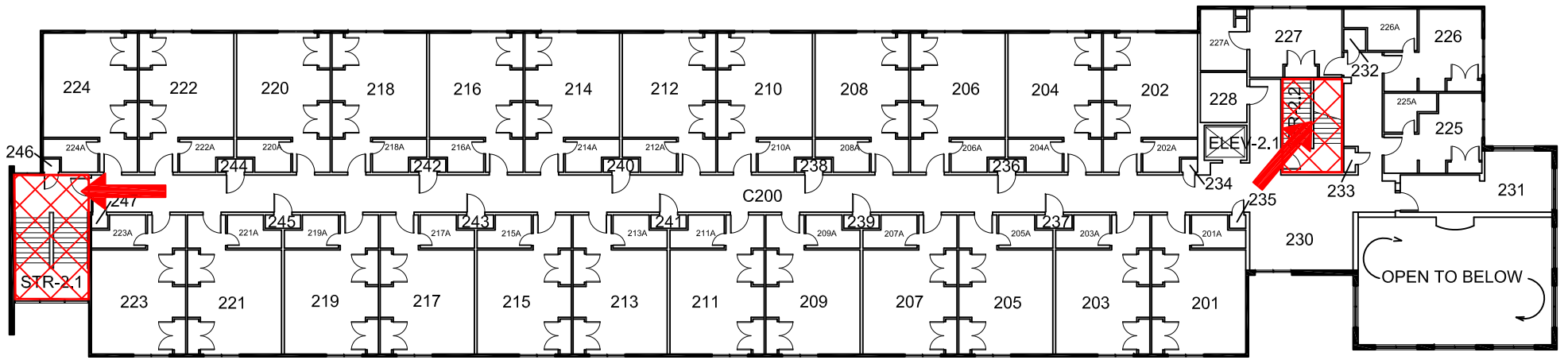
Automatic External Defibrillator

SANTA FE SQUARE

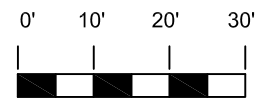
BLDG #0185

04-2019

Exterior Gross Area
12621



SECOND FLOOR PLAN



GRAPHIC SCALE

Safety Legend



Areas of Refuge



Tornado Shelter Areas



Exit/Evacuation Routes

In case of fire, do not use elevator



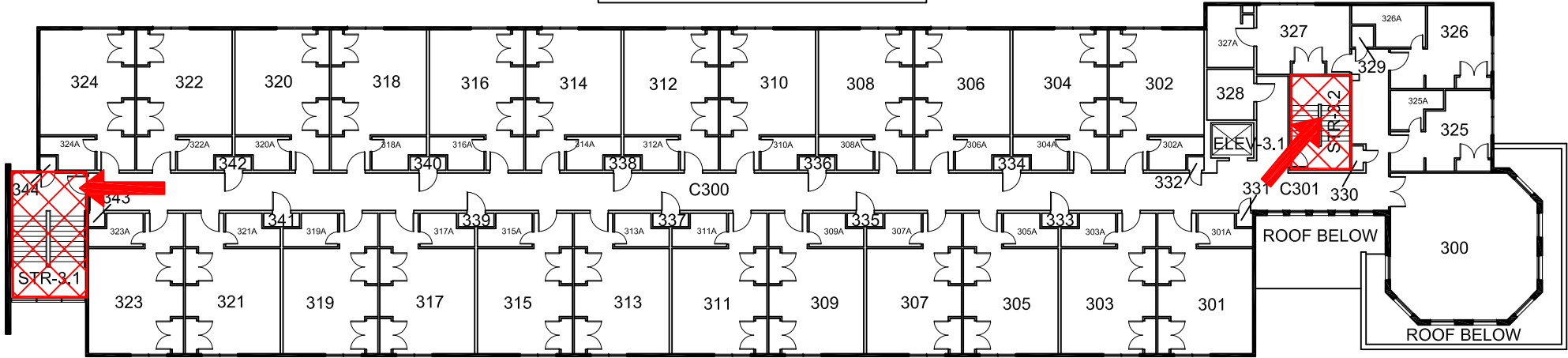
Automatic External Defibrillator

SANTA FE SQUARE

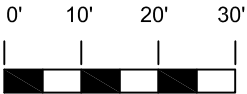
BLDG #0185

05-2019

Exterior Gross Area
12788



THIRD FLOOR PLAN



GRAPHIC SCALE

Safety Legend



Areas of Refuge



Tornado Shelter Areas



Exit/Evacuation Routes

In case of fire, do not use elevator



Automatic External Defibrillator