

# Emergency Evacuation Procedures

## Radio, TV, Film and Performing Arts Building

1179 Union Circle Denton, TX 76201

### Severe Weather

In the event of severe weather, all building occupants should immediately seek shelter in the designated shelter-in-place area in the building. If unable to safely move to the designated shelter-in-place area, seek shelter in a windowless interior room or hallway on the lowest floor of the building.

**All building occupants should take shelter in the interior hallway and restrooms on the lowest floor. Avoid standing near windows, walls and doors made of glass.**

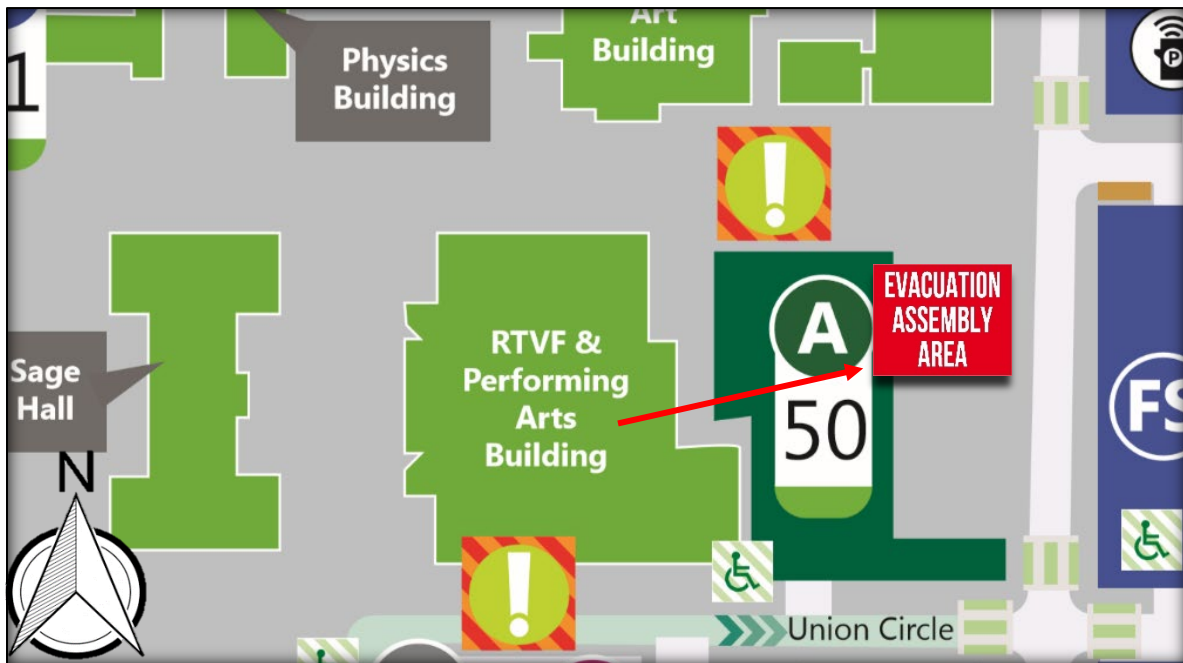
---

### Bomb Threat/Fire

In the event of a bomb threat or fire in the building, all building occupants should immediately evacuate the building using the nearest exit. Once outside, proceed to the designated assembly area. If unable to safely move to the designated assembly area, contact one or more members of your department or unit to let them know you are safe and inform them of your whereabouts.

Persons with mobility impairments who are unable to safely exit the building should move to a designated area of refuge and await assistance from emergency responders.

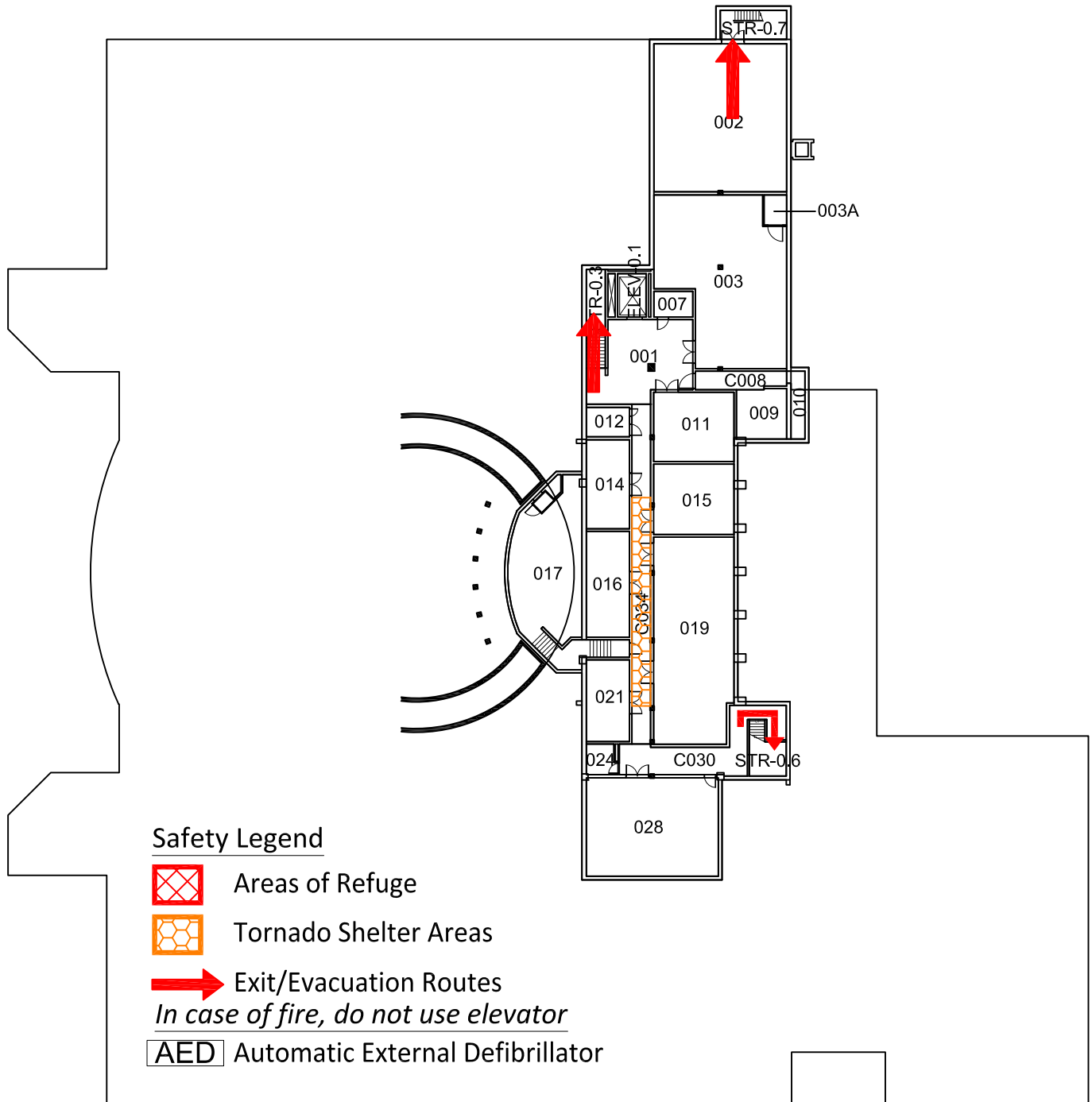
**All building occupants should immediately evacuate the building and proceed to parking lot 50 east of the RTVF Building.**



# RADIO, TV, FILM AND PERFORMING ARTS BUILDING

BUILDING #0140  
11-2011

Exterior Gross Area  
11009



### Safety Legend



Areas of Refuge



Tornado Shelter Areas



Exit/Evacuation Routes

*In case of fire, do not use elevator*

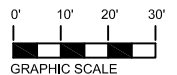


Automatic External Defibrillator

N



## BASEMENT FLOOR PLAN







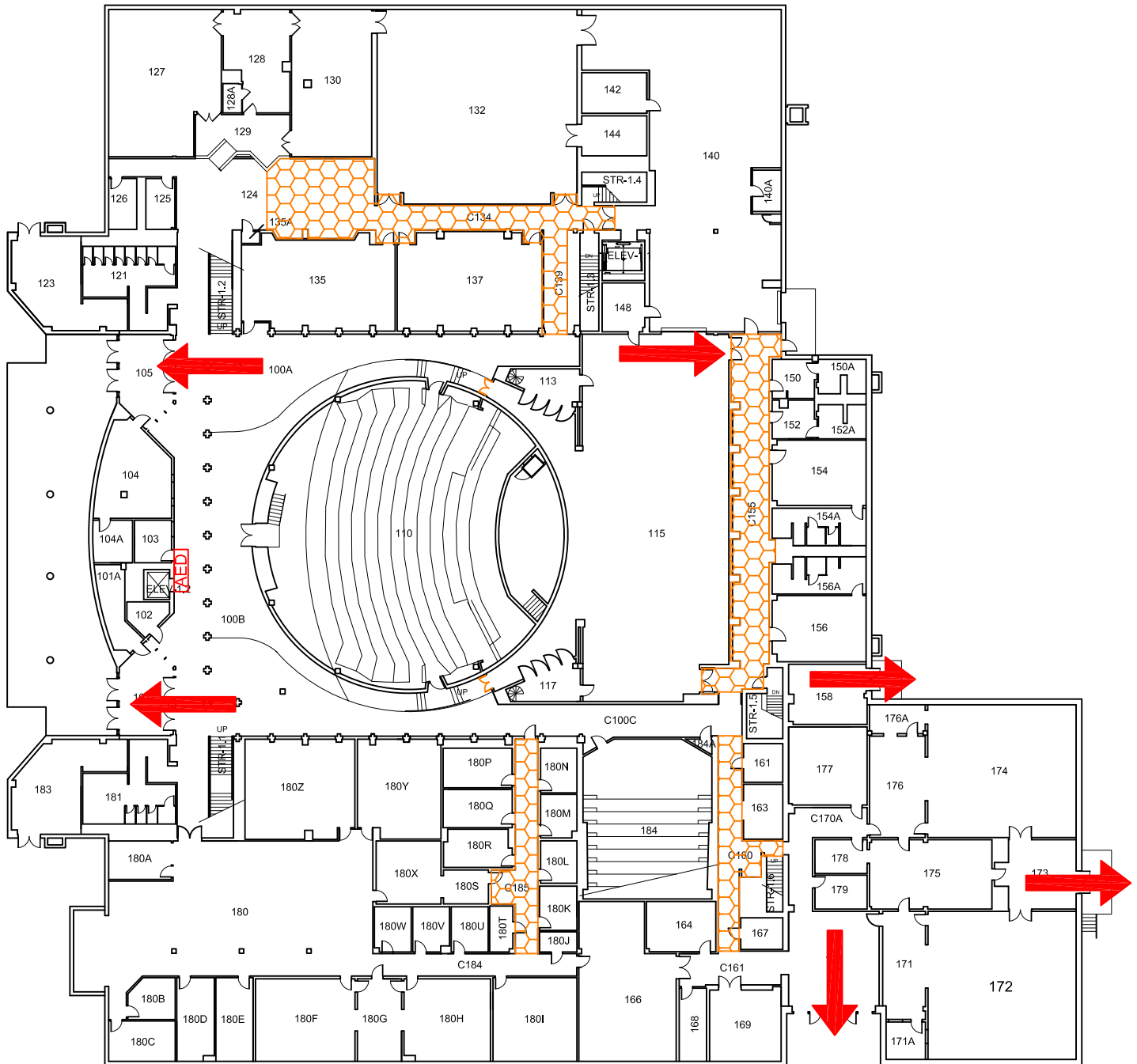
# RADIO, TV, FILM AND PERFORMING ARTS BUILDING

BUILDING #0140  
09 - 2015

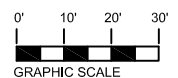
Exterior Gross Area  
62068

## Safety Legend

-  Areas of Refuge
-  Tornado Shelter Areas
-  Exit/Evacuation Routes  
*In case of fire, do not use elevator*
-  Automatic External Defibrillator



FIRST FLOOR PLAN







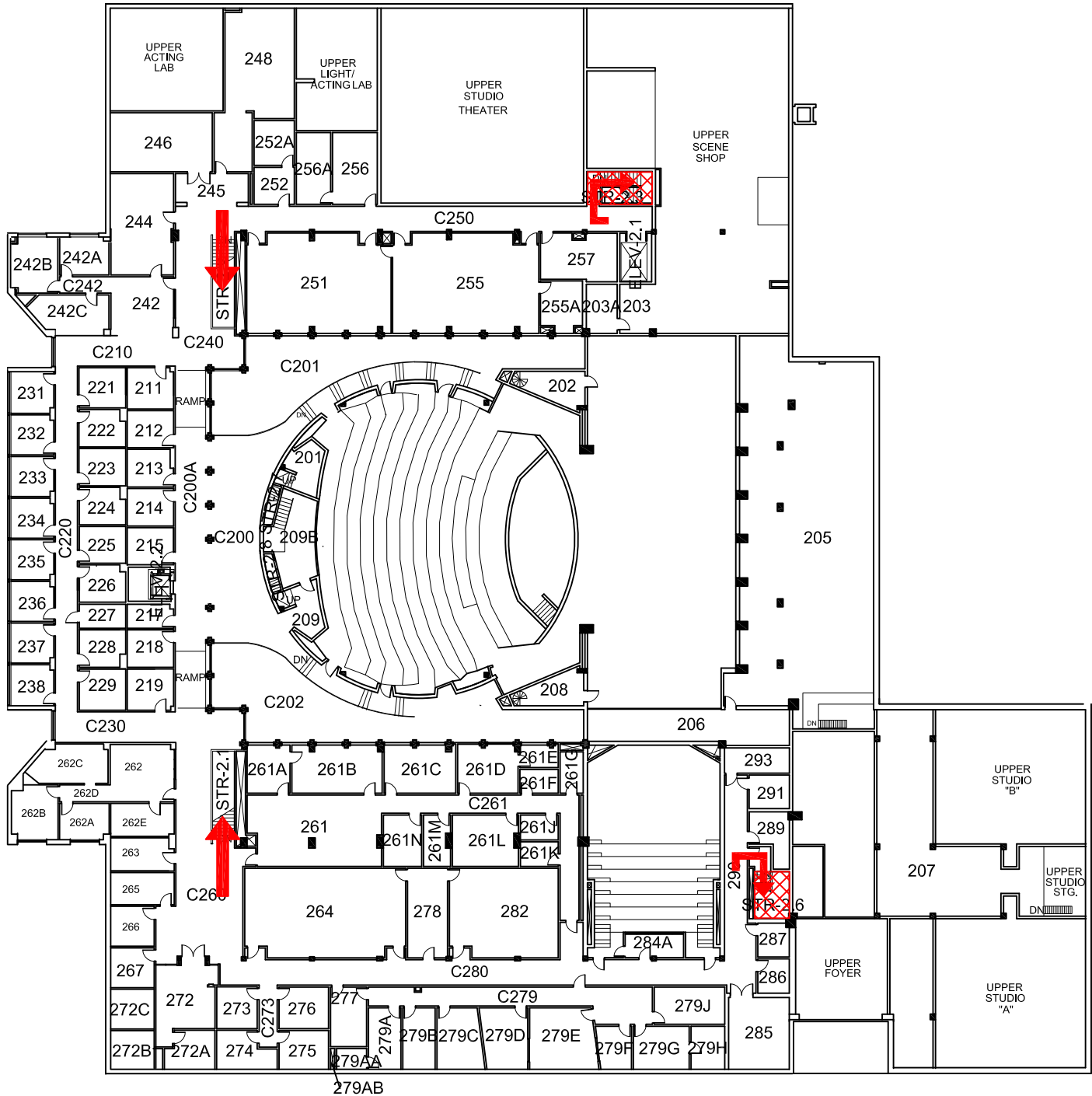
# RADIO, TV, FILM AND PERFORMING ARTS BUILDING

BUILDING #0140  
05-2013

Exterior Gross Area  
39877

### Safety Legend

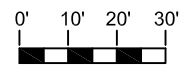
-  Areas of Refuge
-  Tornado Shelter Areas
-  Exit/Evacuation Routes
- In case of fire, do not use elevator*
-  AED Automatic External Defibrillator



N



## SECOND FLOOR PLAN

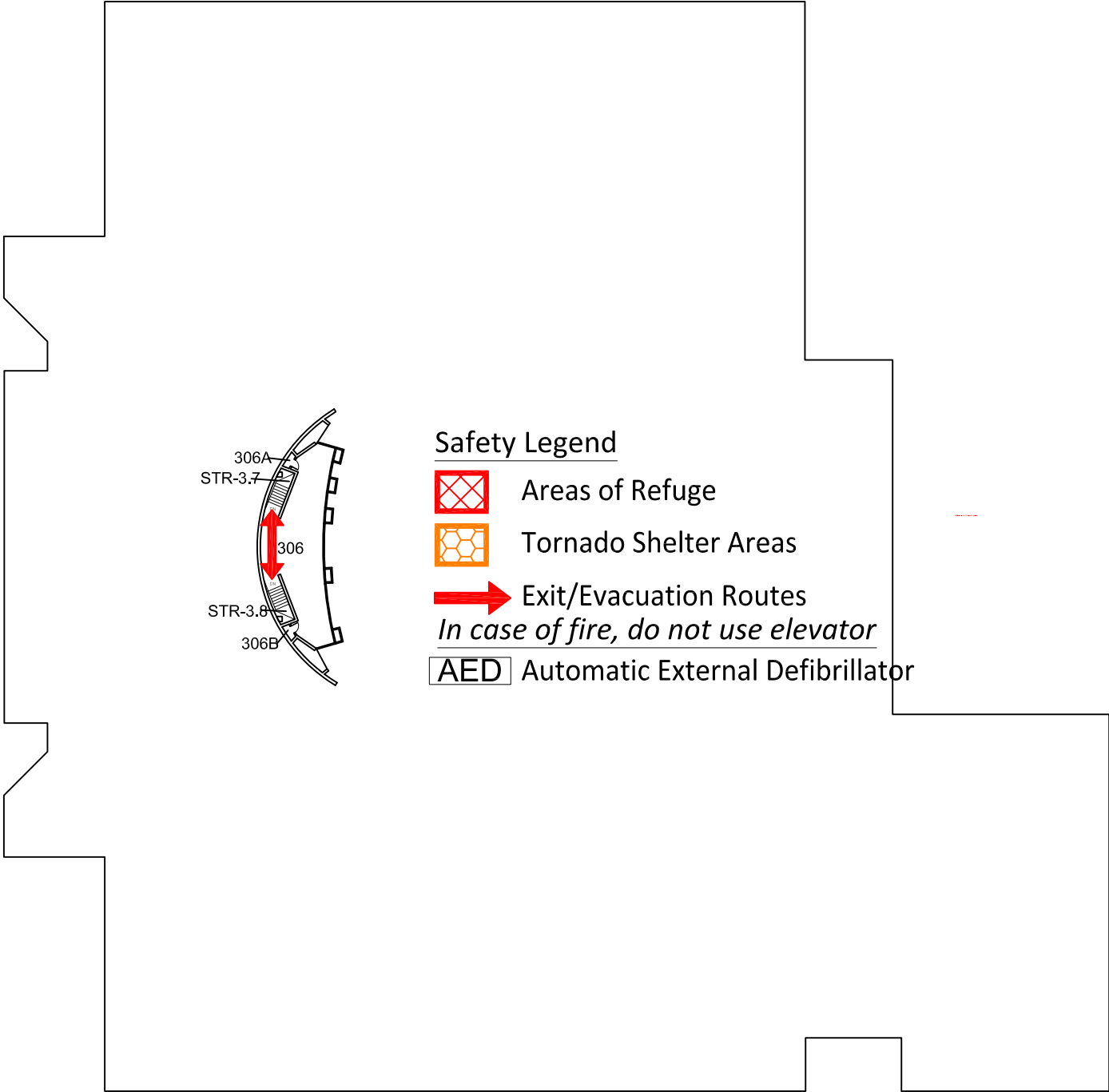


GRAPHIC SCALE





# RADIO, TV, FILM AND PERFORMING ARTS BUILDING

BUILDING #0140  
06- 2007

Exterior Gross Area  
808

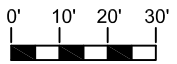


### Safety Legend

-  Areas of Refuge
  -  Tornado Shelter Areas
  -  Exit/Evacuation Routes
  -  AED Automatic External Defibrillator
- In case of fire, do not use elevator*



THIRD FLOOR PLAN



GRAPHIC SCALE