

Emergency Evacuation Procedures

Rawlins Hall

1815 Maple St. Denton, TX 76201

Severe Weather

In the event of severe weather, all building occupants should immediately seek shelter in the designated shelter-in-place area in the building. If unable to safely move to the designated shelter-in-place area, seek shelter in a windowless interior room or hallway on the lowest floor of the building.

All building occupants should take shelter the interior hallways and restrooms on the lowest floor. Avoid standing near windows, walls and doors made of glass.

Bomb Threat/Fire

In the event of a bomb threat or fire in the building, all building occupants should immediately evacuate the building using the nearest exit. Once outside, proceed to the designated assembly area. If unable to safely move to the designated assembly area, contact one or more members of your department or unit to let them know you are safe and inform them of your whereabouts.

Persons with mobility impairments who are unable to safely exit the building should move to a designated area of refuge and await assistance from emergency responders.

All building occupants should immediately evacuate the building and proceed north to parking lot 27 across from Clark Park.

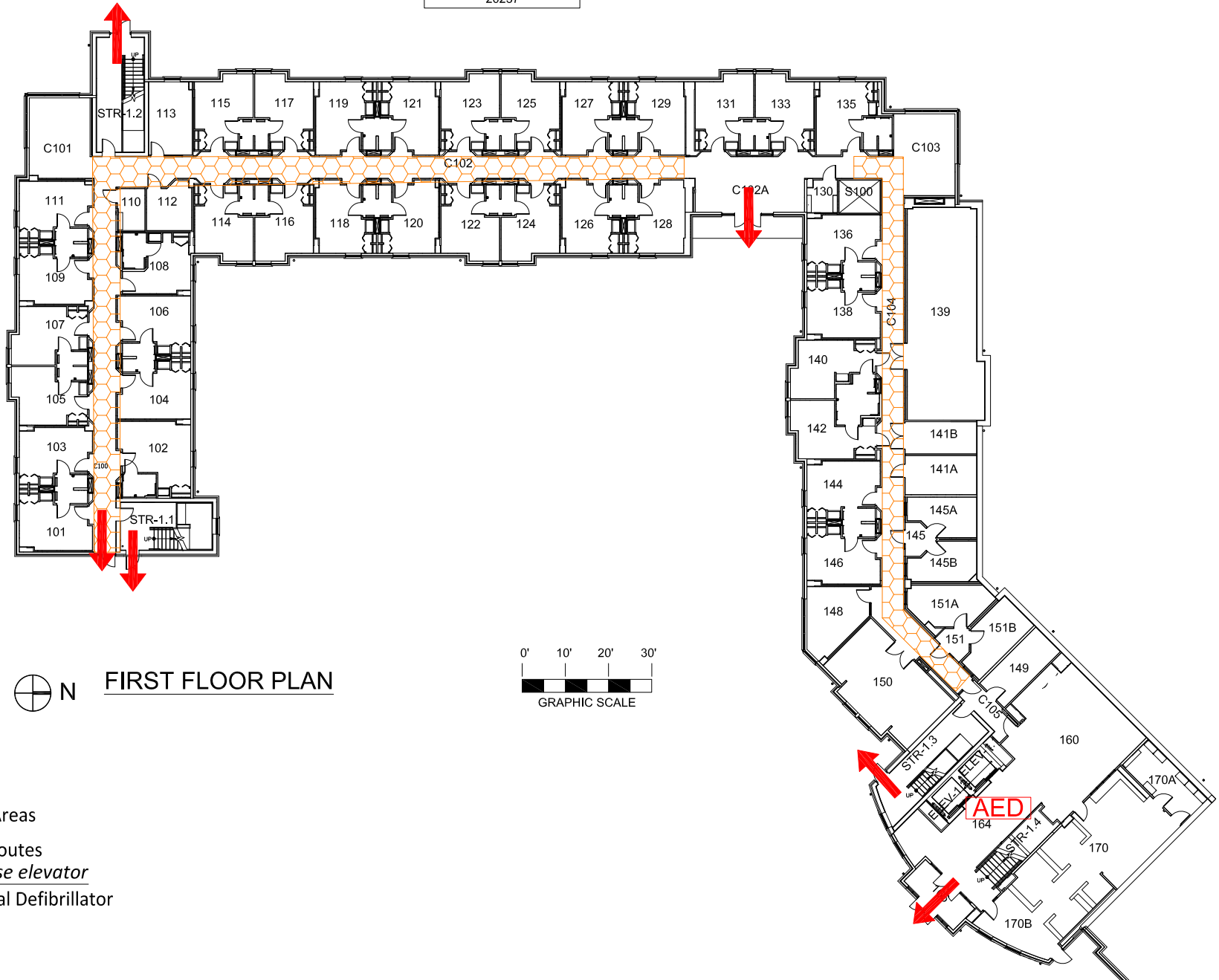


RAWLINS HALL

BLDG # 0173

08-2015





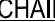
Exterior Gross Area
20237



⊕ N FIRST FLOOR PLAN



Safety Legend

-  Areas of Refuge
-  Tornado Shelter Areas
-  Exit/Evacuation Routes
In case of fire, do not use elevator
-  AED Automatic External Defibrillator
-  CHAIR Evacuation Chair

RAWLINS HALL

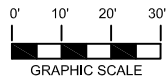
BLDG # 0173

08-2015


Exterior Gross Area
25915





⊕ N SECOND FLOOR PLAN




Safety Legend


 Areas of Refuge

 Tornado Shelter Areas

 Exit/Evacuation Routes

In case of fire, do not use elevator

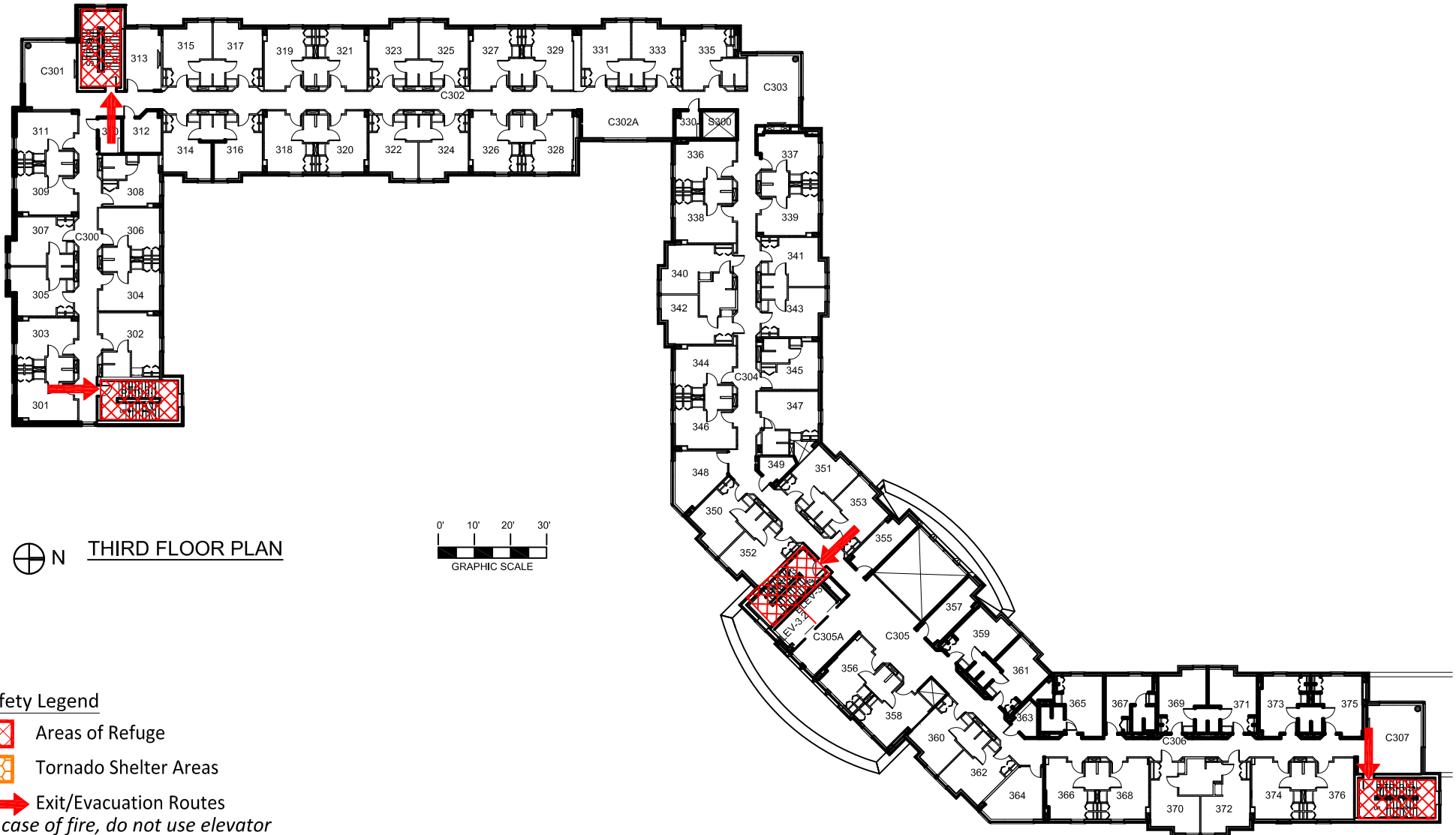
 AED Automatic External Defibrillator

 CHAIR Evacuation Chair

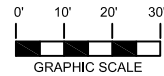
RAWLINS HALL

BLDG # 0173
07-2015


Exterior Gross Area
25010





⊕ N THIRD FLOOR PLAN




Safety Legend


 Areas of Refuge

 Tornado Shelter Areas

 Exit/Evacuation Routes

In case of fire, do not use elevator

 Automatic External Defibrillator

 Evacuation Chair

RAWLINS HALL

BLDG # 0173

08-2015

Exterior Gross Area
25380



⊕ N FOURTH FLOOR PLAN



Safety Legend

Areas of Refuge

Tornado Shelter Areas

Exit/Evacuation Routes

In case of fire, do not use elevator

Automatic External Defibrillator

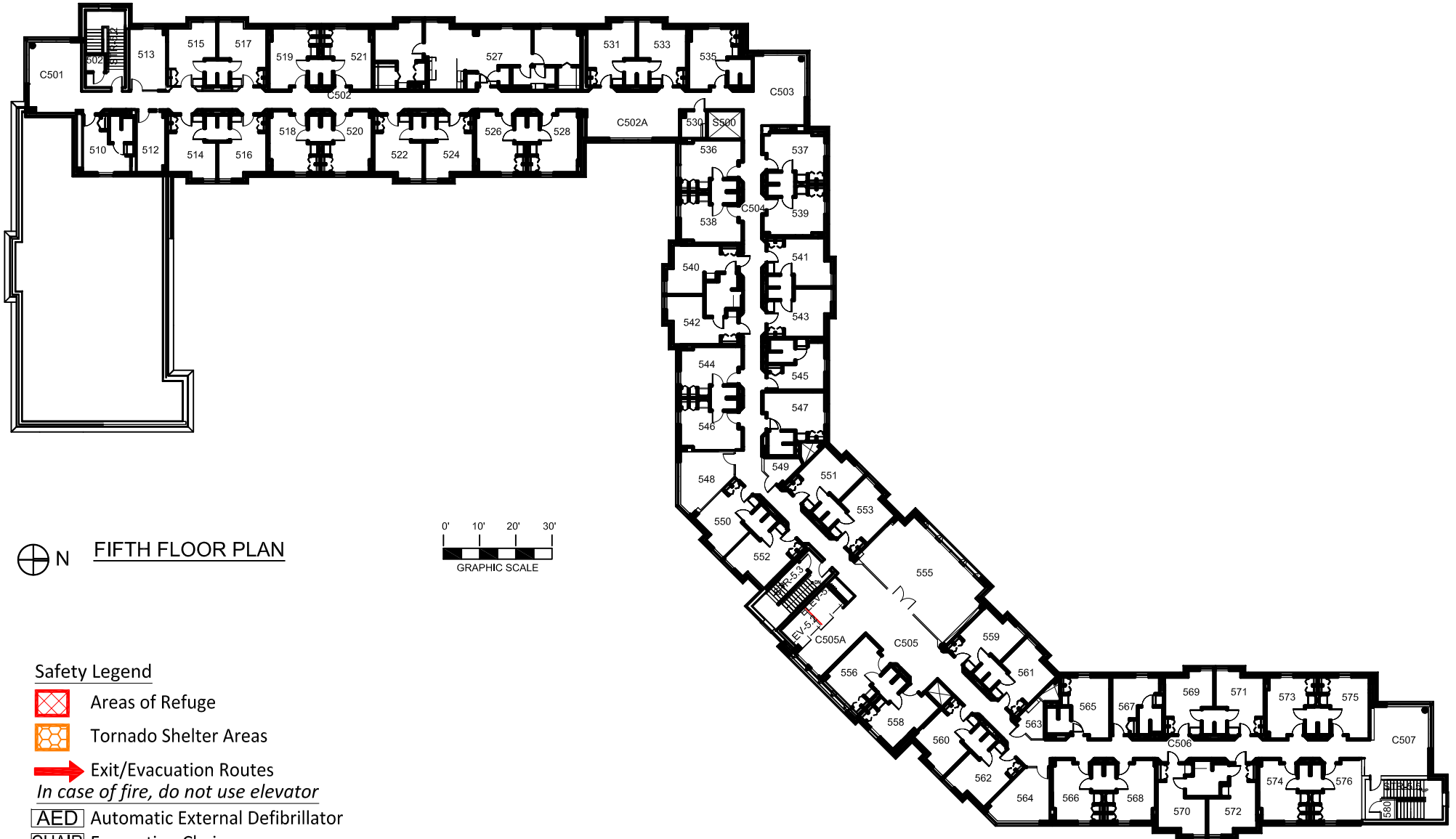
Evacuation Chair

RAWLINS HALL

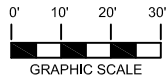
BLDG # 0173

08-2015

Exterior Gross Area
22138



⊕ N FIFTH FLOOR PLAN



Safety Legend

Areas of Refuge

Tornado Shelter Areas

Exit/Evacuation Routes

In case of fire, do not use elevator

AED Automatic External Defibrillator

CHAIR Evacuation Chair