

Emergency Evacuation Procedures

Pohl Recreation Center

1900 Chestnut St. Denton, TX 76201

Severe Weather

In the event of severe weather, all building occupants should immediately seek shelter in the designated shelter-in-place area in the building. If unable to safely move to the designated shelter-in-place area, seek shelter in a windowless interior room or hallway on the lowest floor of the building.

First Floor: Building occupants should proceed to the locker rooms.

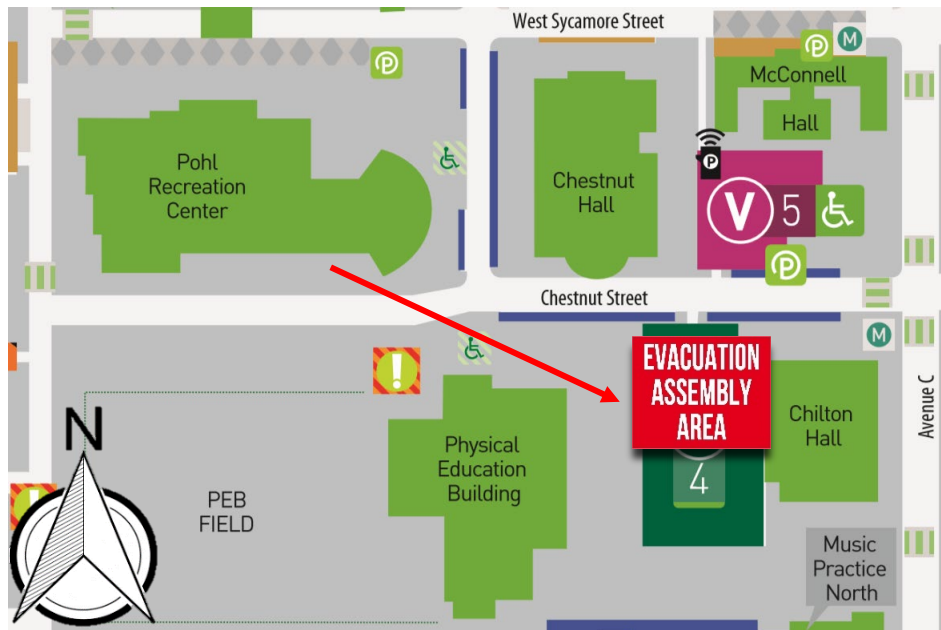
Second Floor: Building occupants should proceed to the interior rest rooms. Avoid standing near windows, walls and doors made of glass.

Bomb Threat/Fire

In the event of a bomb threat or fire in the building, all building occupants should immediately evacuate the building using the nearest exit. Once outside, proceed to the designated assembly area. If unable to safely move to the designated assembly area, contact one or more members of your department or unit to let them know you are safe and inform them of your whereabouts.

Persons with mobility impairments who are unable to safely exit the building should move to a designated area of refuge and await assistance from emergency responders.

All building occupants should immediately evacuate the building and proceed to parking lot 4 located next to Chilton Hall.





POHL RECREATION CENTER


BUILDING #0118
03-2019

Exterior Gross Area
107771

Safety Legend


 Areas of Refuge

 Tornado Shelter Areas

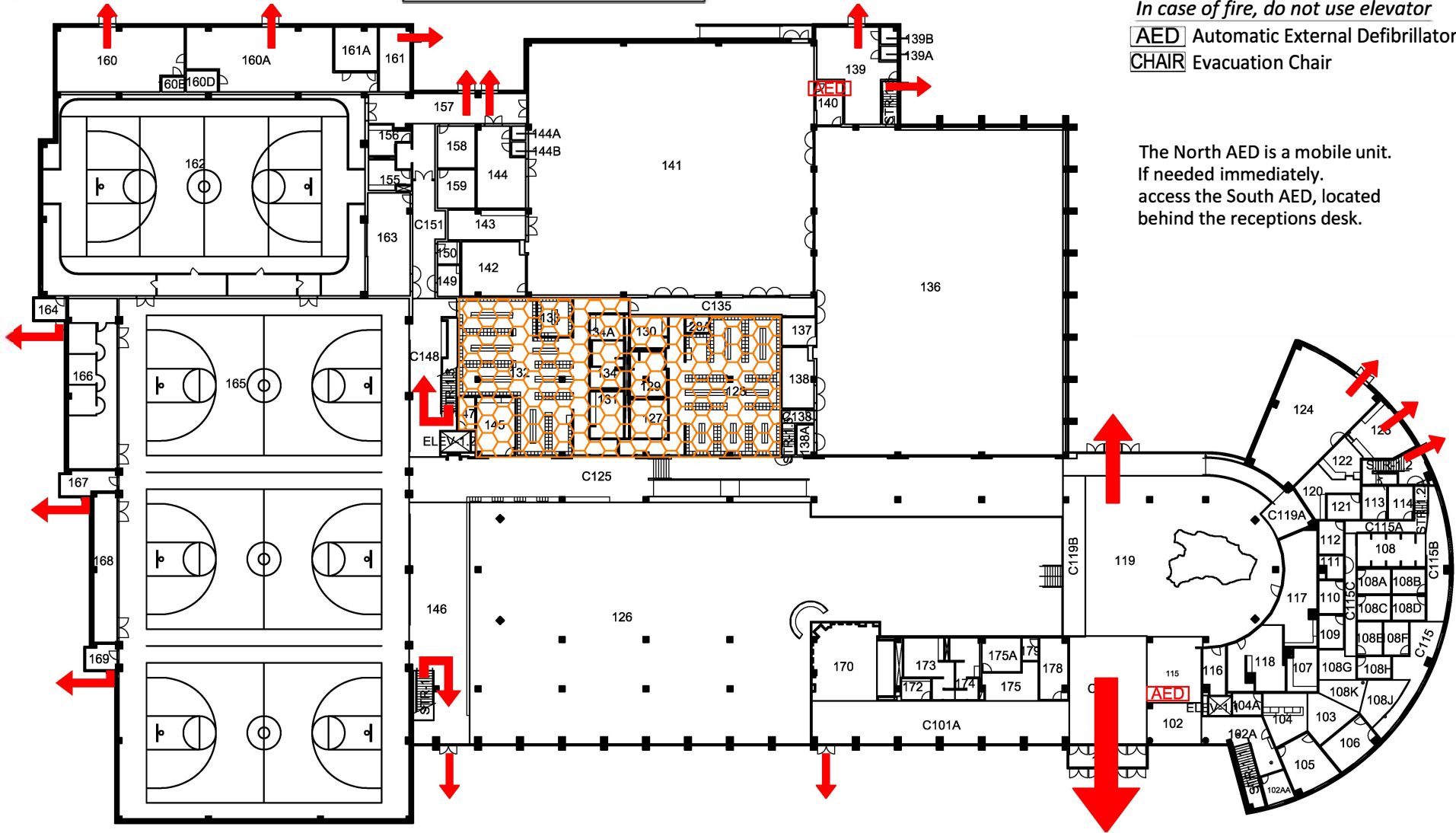
 Exit/Evacuation Routes

In case of fire, do not use elevator

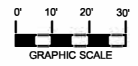
 AED Automatic External Defibrillator

 CHAIR Evacuation Chair

The North AED is a mobile unit.
If needed immediately,
access the South AED, located
behind the receptions desk.



FIRST FLOOR PLAN




POHL RECREATIONAL CENTER


BUILDING #0118


09-2006

Exterior Gross Area
31033

Safety Legend


 Areas of Refuge

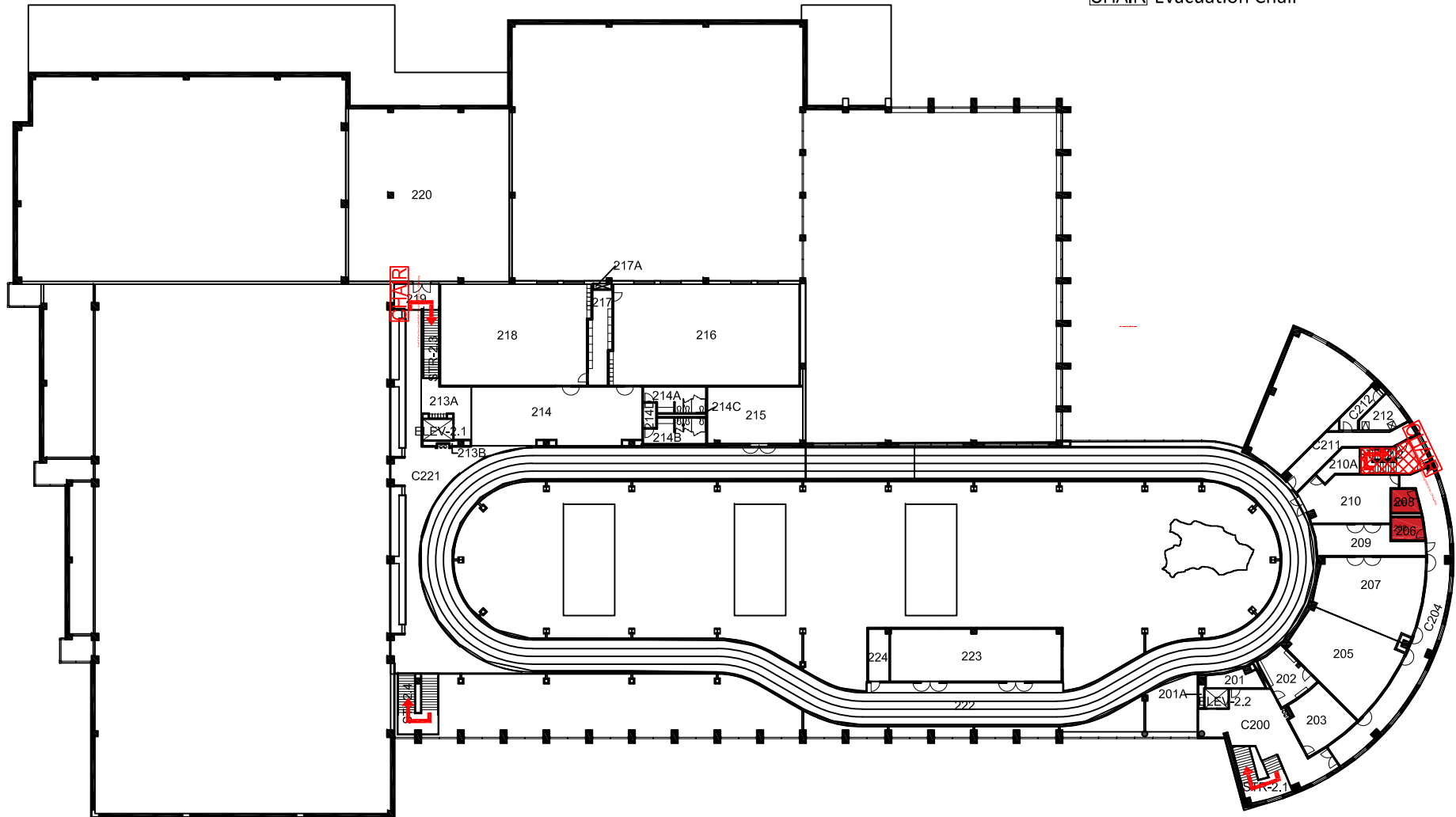
 Tornado Shelter Areas

 Exit/Evacuation Routes

In case of fire, do not use elevator

 AED Automatic External Defibrillator

 CHAIR Evacuation Chair



N



SECOND FLOOR PLAN

0' 10' 20' 30'
GRAPHIC SCALE