

# Emergency Evacuation Procedures

## Physics Building

210 Avenue A. Denton, TX 76201

### Severe Weather

In the event of severe weather, all building occupants should immediately seek shelter in the designated shelter-in-place area in the building. If unable to safely move to the designated shelter-in-place area, seek shelter in a windowless interior room or hallway on the lowest floor of the building.

**All building occupants should take shelter in the basement or in the restrooms on the first floor. Avoid standing near windows, walls and doors made of glass.**

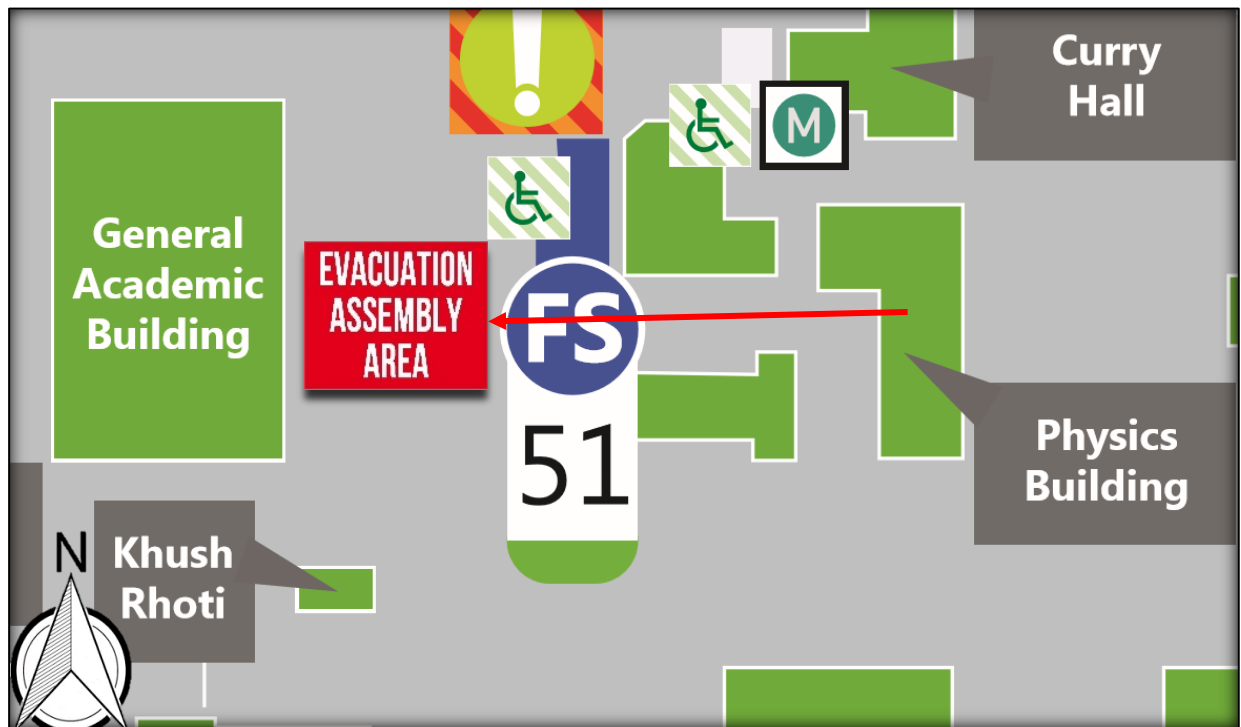
---

### Bomb Threat/Fire

In the event of a bomb threat or fire in the building, all building occupants should immediately evacuate the building using the nearest exit. Once outside, proceed to the designated assembly area. If unable to safely move to the designated assembly area, contact one or more members of your department or unit to let them know you are safe and inform them of your whereabouts.

Persons with mobility impairments who are unable to safely exit the building should move to a designated area of refuge and await assistance from emergency responders.

**All building occupants should immediately evacuate the building and proceed west to the area east of the General Academic Building.**

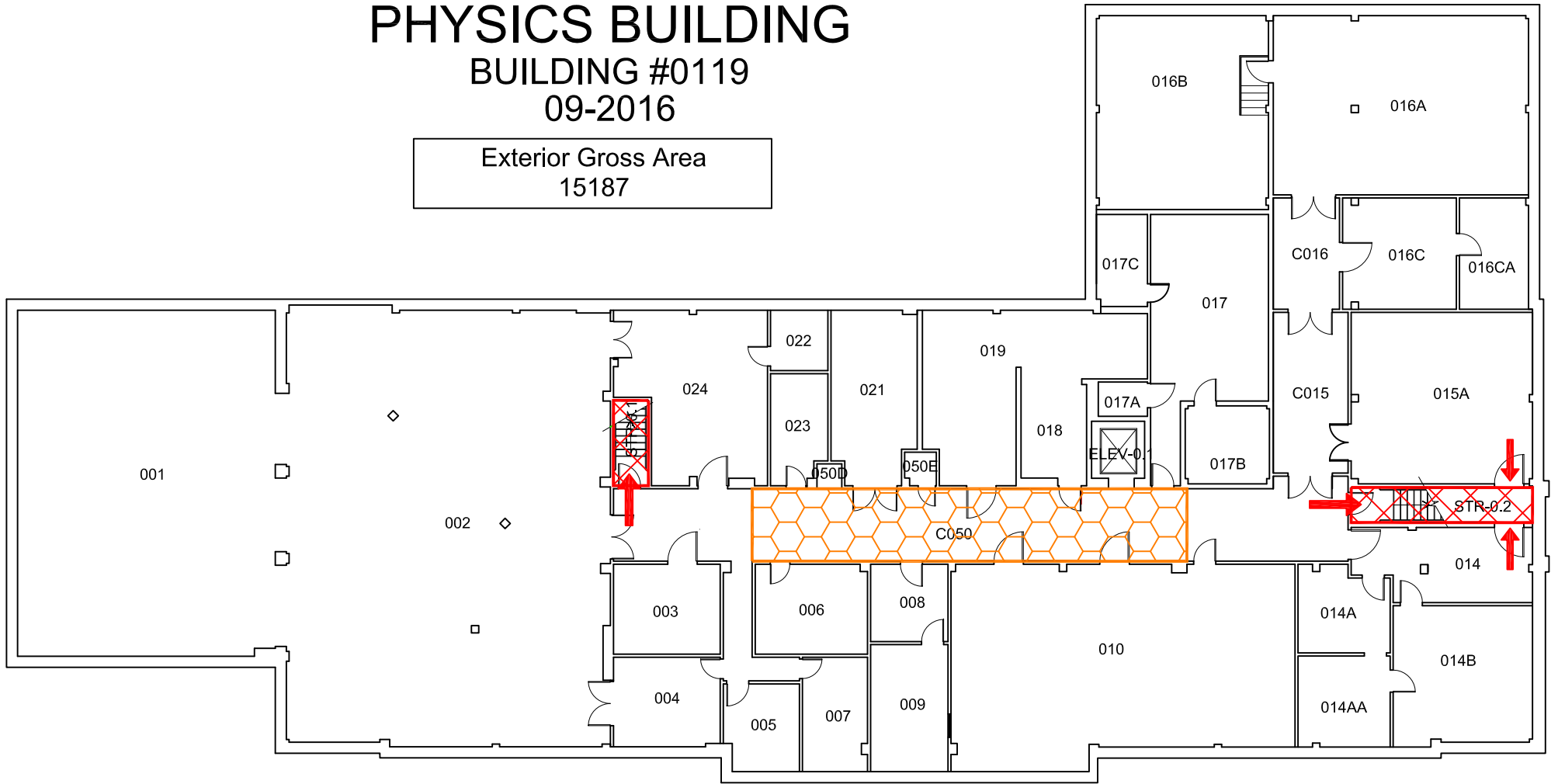


# PHYSICS BUILDING

BUILDING #0119

09-2016

Exterior Gross Area  
15187



N

## BASEMENT FLOOR PLAN

### Safety Legend



Areas of Refuge



Tornado Shelter Areas

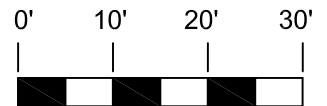


Exit/Evacuation Routes

*In case of fire, do not use elevator*



Automatic External Defibrillator



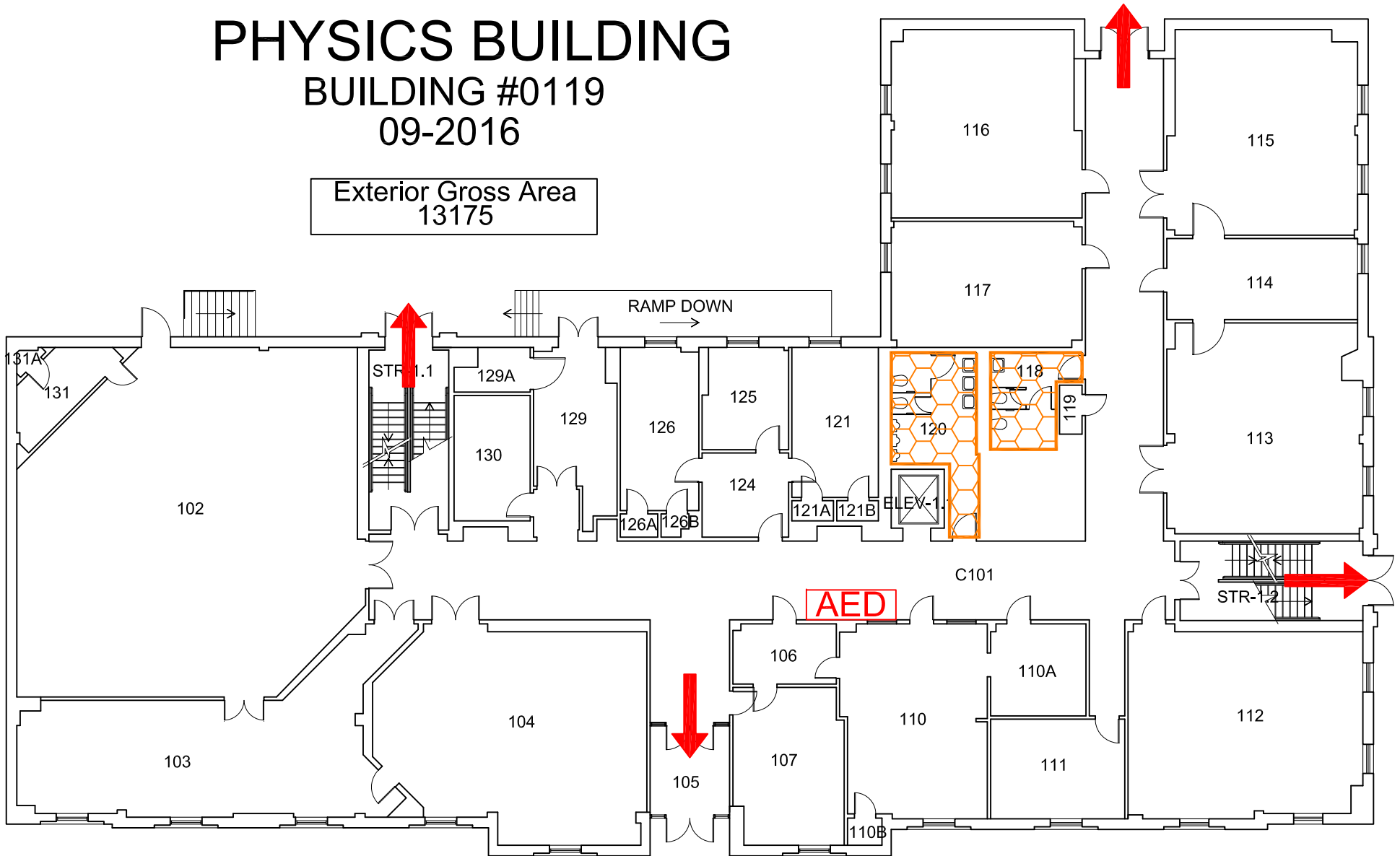
GRAPHIC SCALE

# PHYSICS BUILDING


BUILDING #0119


09-2016


Exterior Gross Area  
13175




## Safety Legend

 Areas of Refuge

 Tornado Shelter Areas

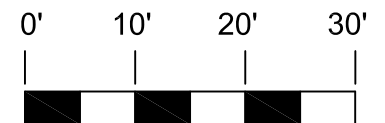
 Exit/Evacuation Routes

*In case of fire, do not use elevator*

 Automatic External Defibrillator



## FIRST FLOOR PLAN



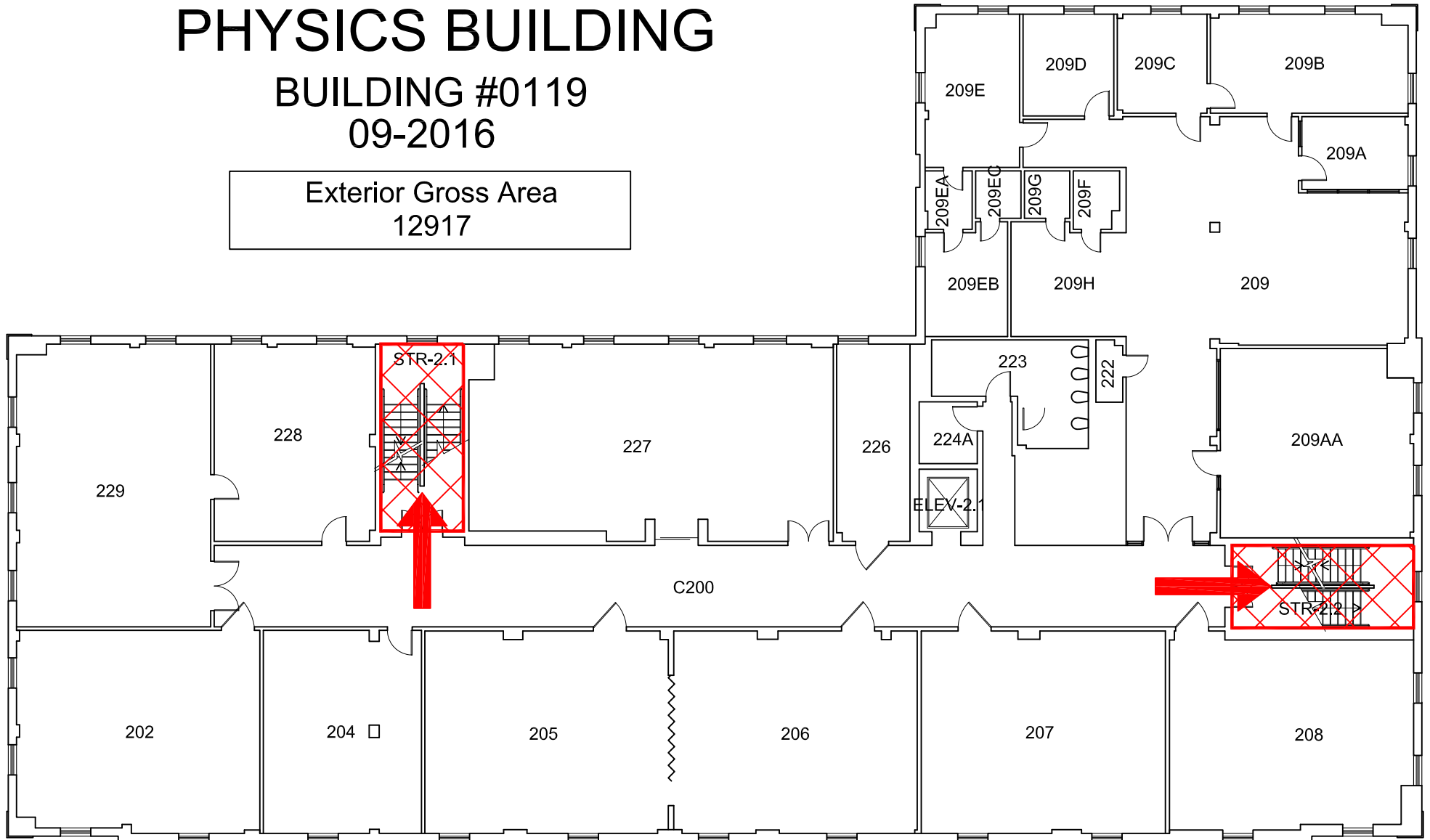
GRAPHIC SCALE

# PHYSICS BUILDING

BUILDING #0119

09-2016

Exterior Gross Area  
12917



## SECOND FLOOR PLAN

### Safety Legend



Areas of Refuge



Tornado Shelter Areas

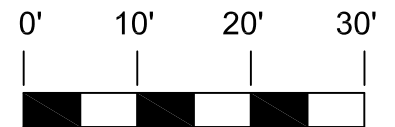


Exit/Evacuation Routes

*In case of fire, do not use elevator*



Automatic External Defibrillator



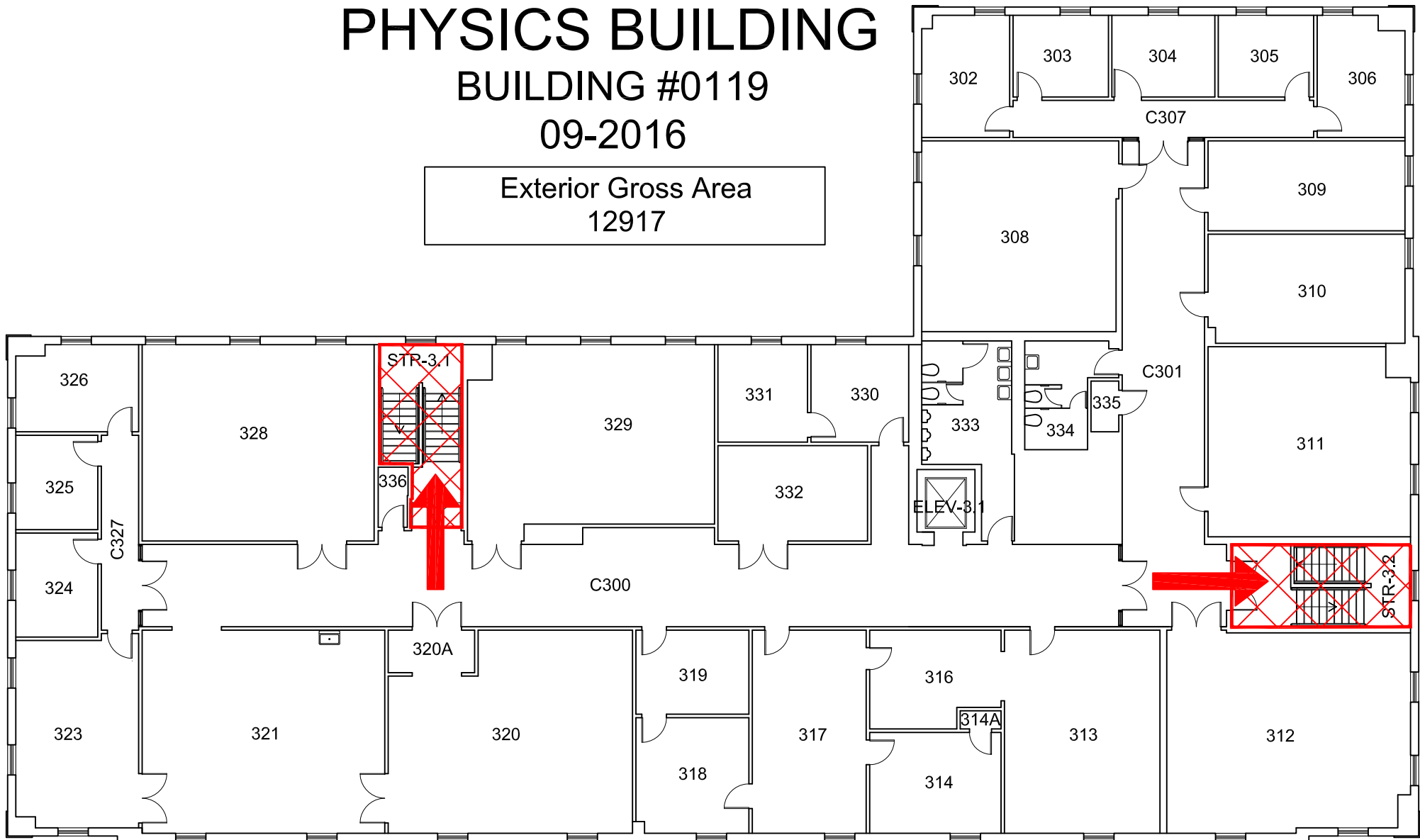
GRAPHIC SCALE

# PHYSICS BUILDING

BUILDING #0119





09-2016

Exterior Gross Area  
12917



## THIRD FLOOR PLAN

### Safety Legend

-  Areas of Refuge
-  Tornado Shelter Areas
-  Exit/Evacuation Routes
- In case of fire, do not use elevator*
-  AED Automatic External Defibrillator

