

Emergency Evacuation Procedures

Oak Street Hall

1120 W. Oak St. Denton, TX 76201

Severe Weather

In the event of severe weather, all building occupants should immediately seek shelter in the designated shelter-in-place area in the building. If unable to safely move to the designated shelter-in-place area, seek shelter in a windowless interior room or hallway on the lowest floor of the building.

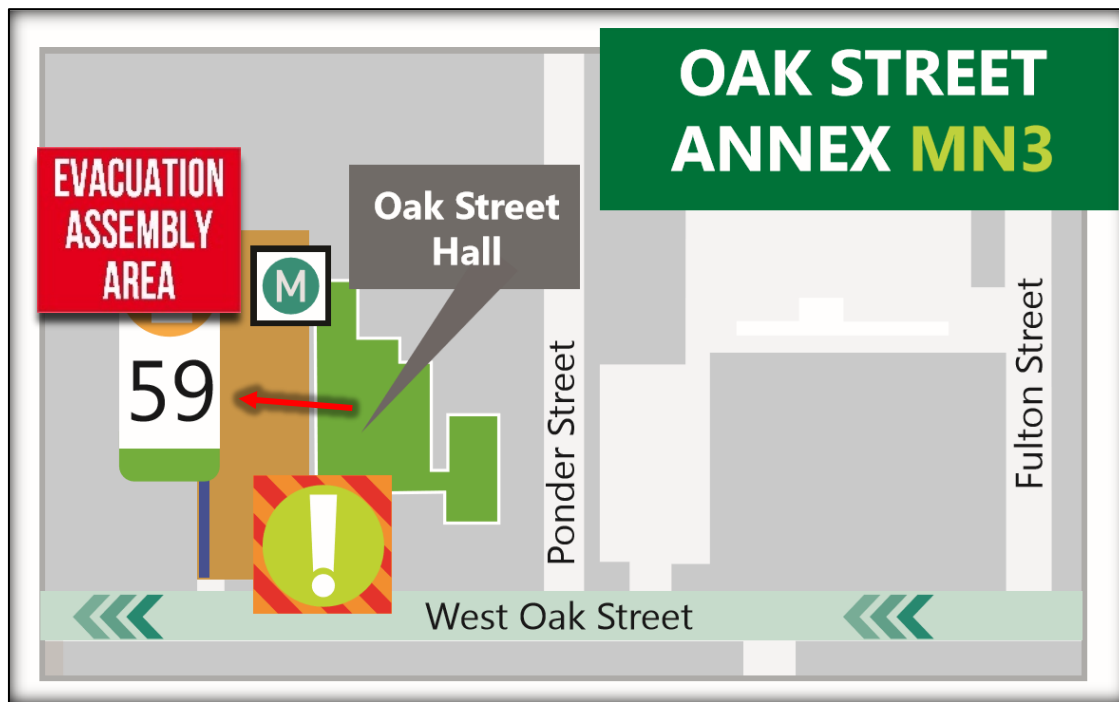
All building occupants should take shelter in the interior hallways and restrooms on the first floor. Avoid standing near windows, walls and doors made of glass.

Bomb Threat/Fire

In the event of a bomb threat or fire in the building, all building occupants should immediately evacuate the building using the nearest exit. Once outside, proceed to the designated assembly area. If unable to safely move to the designated assembly area, contact one or more members of your department or unit to let them know you are safe and inform them of your whereabouts.

Persons with mobility impairments who are unable to safely exit the building should move to a designated area of refuge and await assistance from emergency responders.

All building occupants should immediately evacuate the building and proceed to parking lot 59 west of Oak Street Hall.

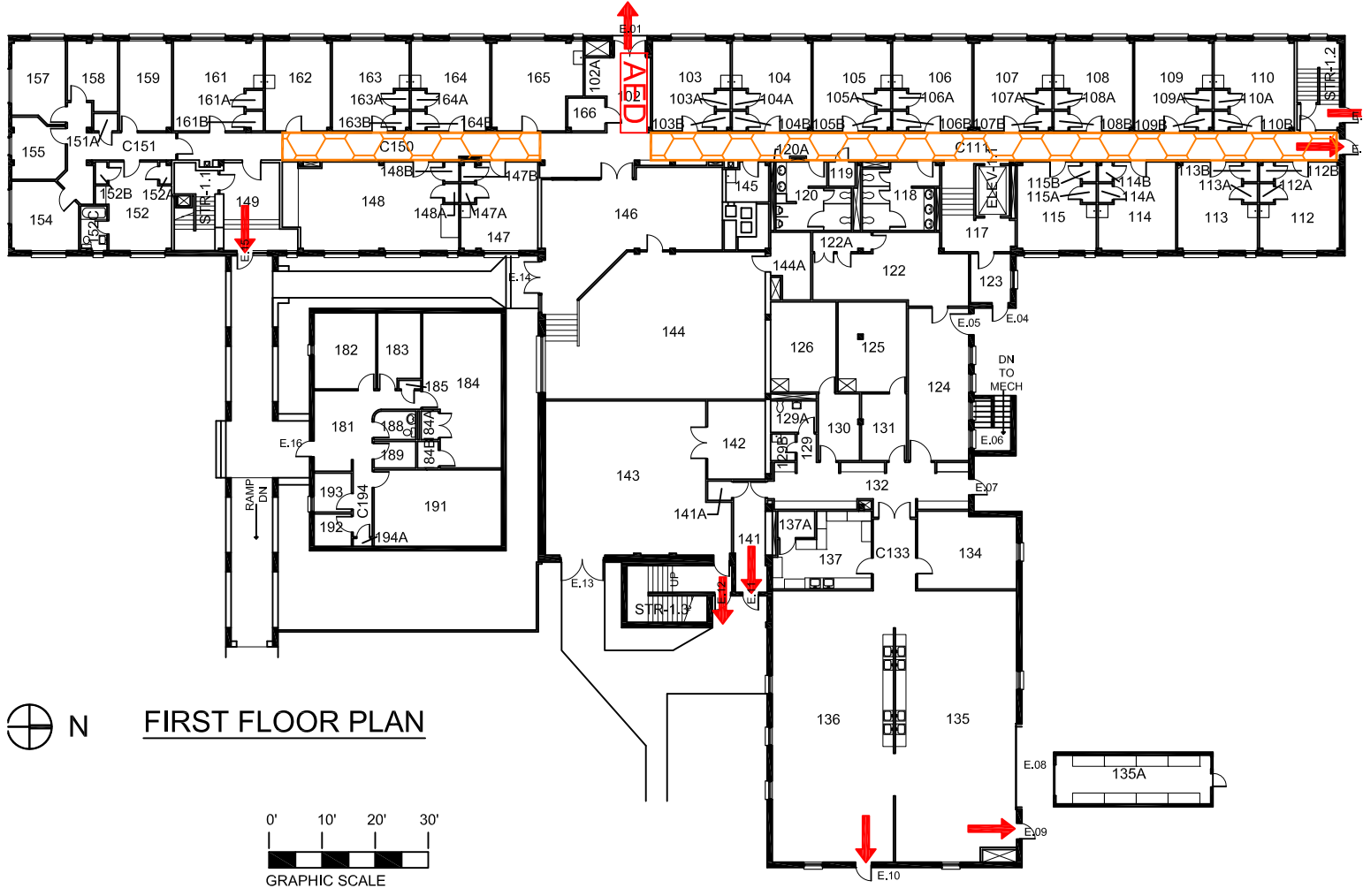


OAK STREET HALL

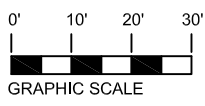
BUILDING #0132

08-2013




Exterior Gross Area
20393



⊕ N FIRST FLOOR PLAN



Safety Legend

-  Areas of Refuge
-  Tornado Shelter Areas
-  Exit/Evacuation Routes

In case of fire, do not use elevator

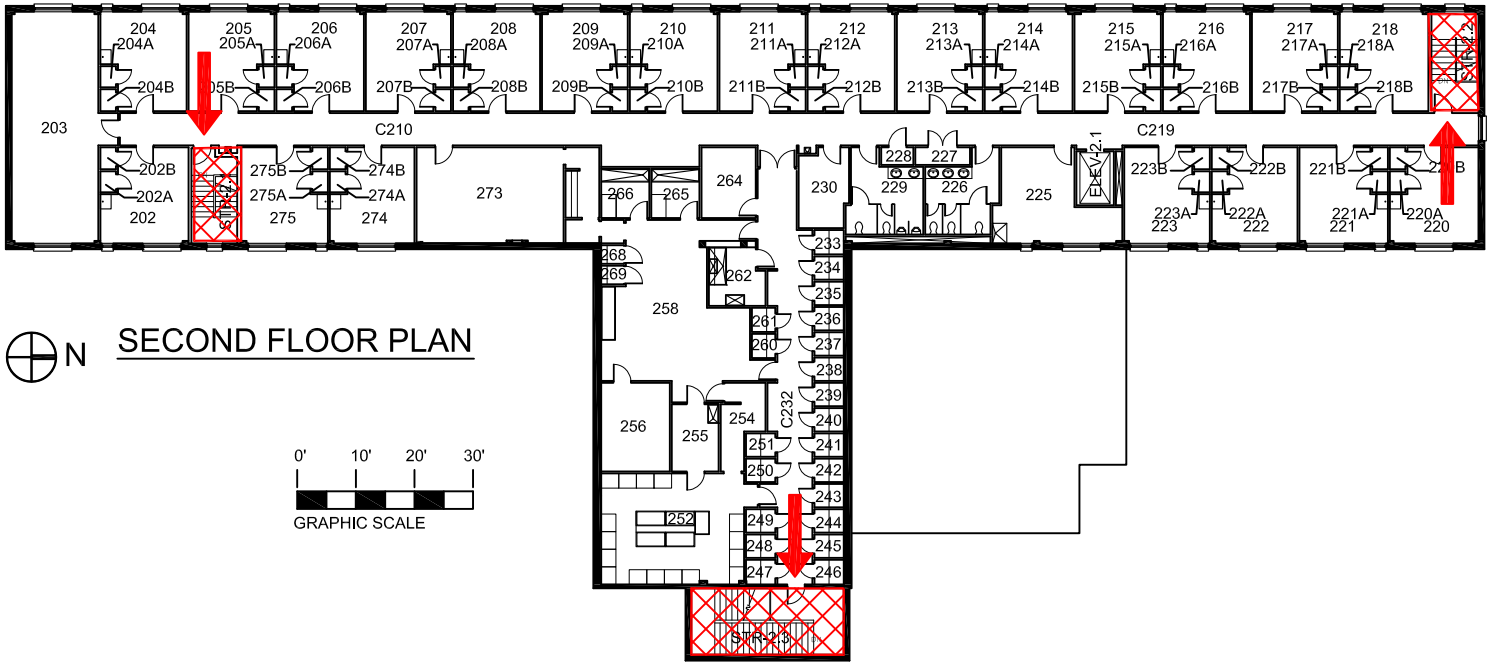
AED Automatic External Defibrillator
CHAIR Evacuation Chair

OAK STREET HALL

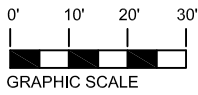
BUILDING #0132

07-2007



Exterior Gross Area
13365




 N **SECOND FLOOR PLAN**





Safety Legend

-  Areas of Refuge
-  Tornado Shelter Areas

 Exit/Evacuation Routes

In case of fire, do not use elevator

 Automatic External Defibrillator

 Evacuation Chair