

Emergency Evacuation Procedures

North Texas Lofts

217 North Texas Blvd Denton, TX 76201

Severe Weather

In the event of severe weather, all building occupants should immediately seek shelter in the designated shelter-in-place area in the building. If unable to safely move to the designated shelter-in-place area, seek shelter in a windowless interior room or hallway on the lowest floor of the building.

All building occupants should take occupants should take shelter in Legends Hall located east of the building in the interior halls and restrooms of the lowest floor. Avoid standing near windows, walls and doors made of glass.

Bomb Threat/Fire

In the event of a bomb threat or fire in the building, all building occupants should immediately evacuate the building using the nearest exit. Once outside, proceed to the designated assembly area. If unable to safely move to the designated assembly area, contact one or more members of your department or unit to let them know you are safe and inform them of your whereabouts.

Persons with mobility impairments who are unable to safely exit the building should move to a designated area of refuge and await assistance from emergency responders.

All building occupants should immediately evacuate the building and proceed to parking lot 12 south of College Inn.



NORTH TEXAS LOFTS


BLDG #0864

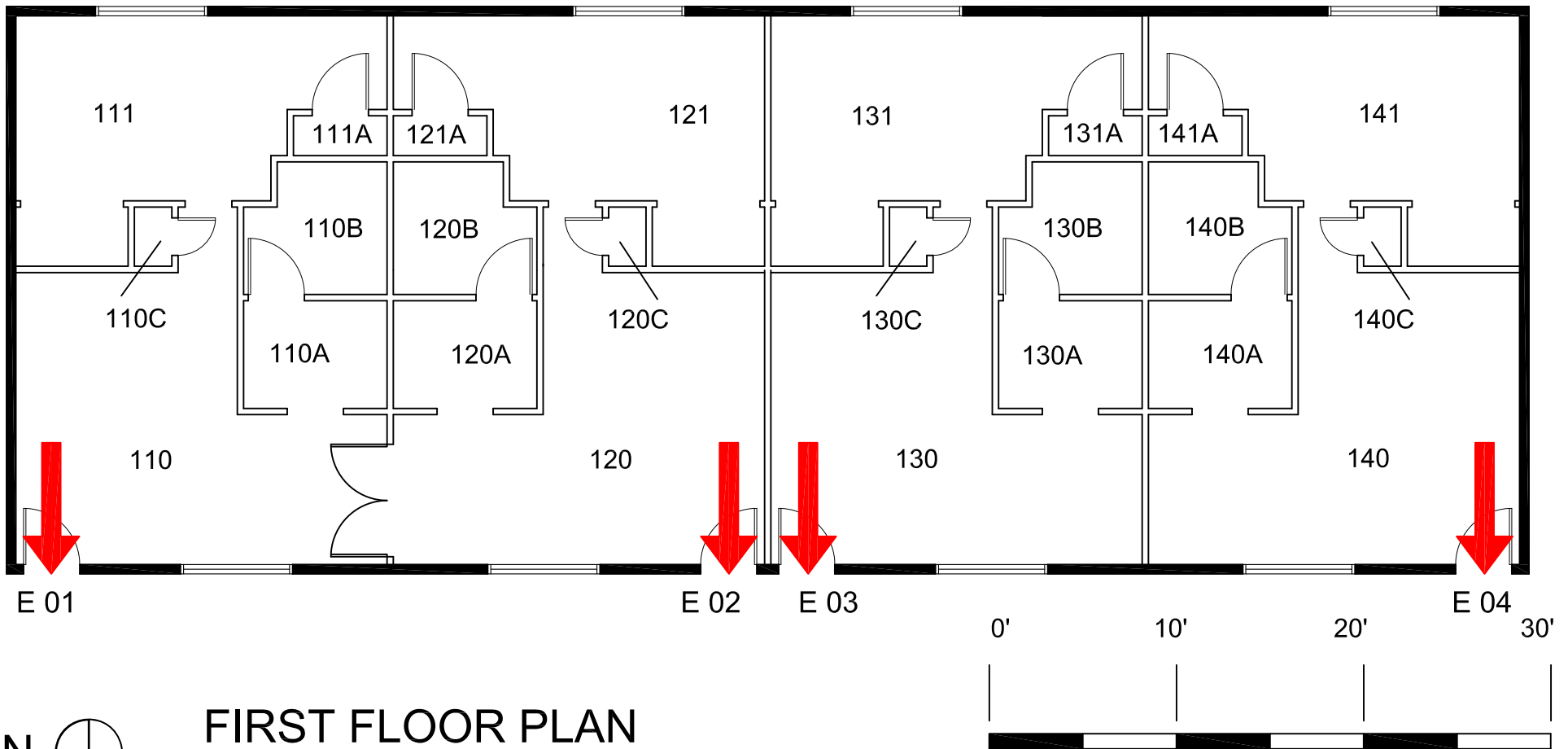
10-2016

During severe weather, all building occupants should seek shelter in Legends Hall, located east of the Lofts.

Exterior Gross Area
2464

Safety Legend

 Exit/Evacuation Routes
In case of fire, do not use elevator



FIRST FLOOR PLAN

GRAPHIC SCALE

NORTH TEXAS LOFTS


BLDG #0864

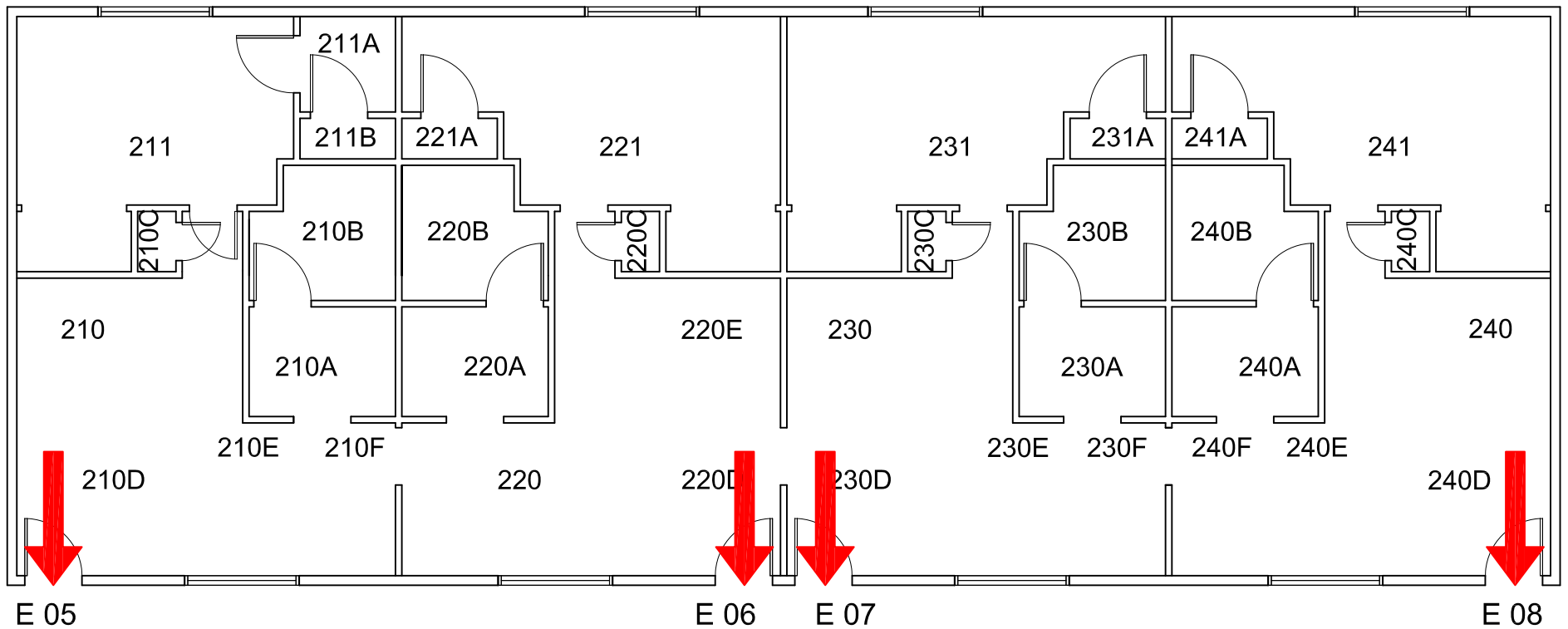
10-2016

During severe weather, all building occupants should seek shelter in Legends Hall, located east of the Lofts.

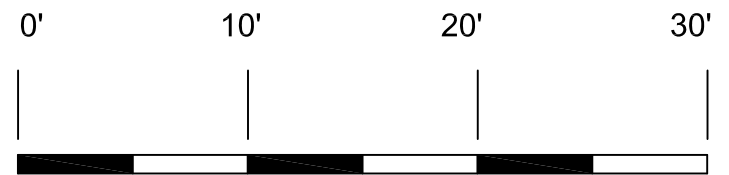
Exterior Gross Area
2464

Safety Legend

 Exit/Evacuation Routes
In case of fire, do not use elevator



SECOND FLOOR PLAN



GRAPHIC SCALE