

Emergency Evacuation Procedures

Music Practice South

510 S. Avenue C, Denton, TX 76201

Severe Weather

In the event of severe weather, all building occupants should immediately seek shelter in the designated shelter-in-place area in the building. If unable to safely move to the designated shelter-in-place area, seek shelter in a windowless interior room or hallway on the lowest floor of the building.

All building occupants should take shelter in the restrooms and interior hallways of the 1st floor. Avoid standing near windows, walls and doors made of glass.

Bomb Threat/Fire

In the event of a bomb threat or fire in the building, all building occupants should immediately evacuate the building using the nearest exit. Once outside, proceed to the designated assembly area. If unable to safely move to the designated assembly area, contact one or more members of your department or unit to let them know you are safe and inform them of your whereabouts.

Persons with mobility impairments who are unable to safely exit the building should move to a designated area of refuge and await assistance from emergency responders.

All exits are clearly marked for building occupants to evacuate immediately. Proceed to the West end of Parking Lot 26 West of the Music Practice South building. Once you leave the building, do not re-enter for any reason.

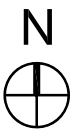
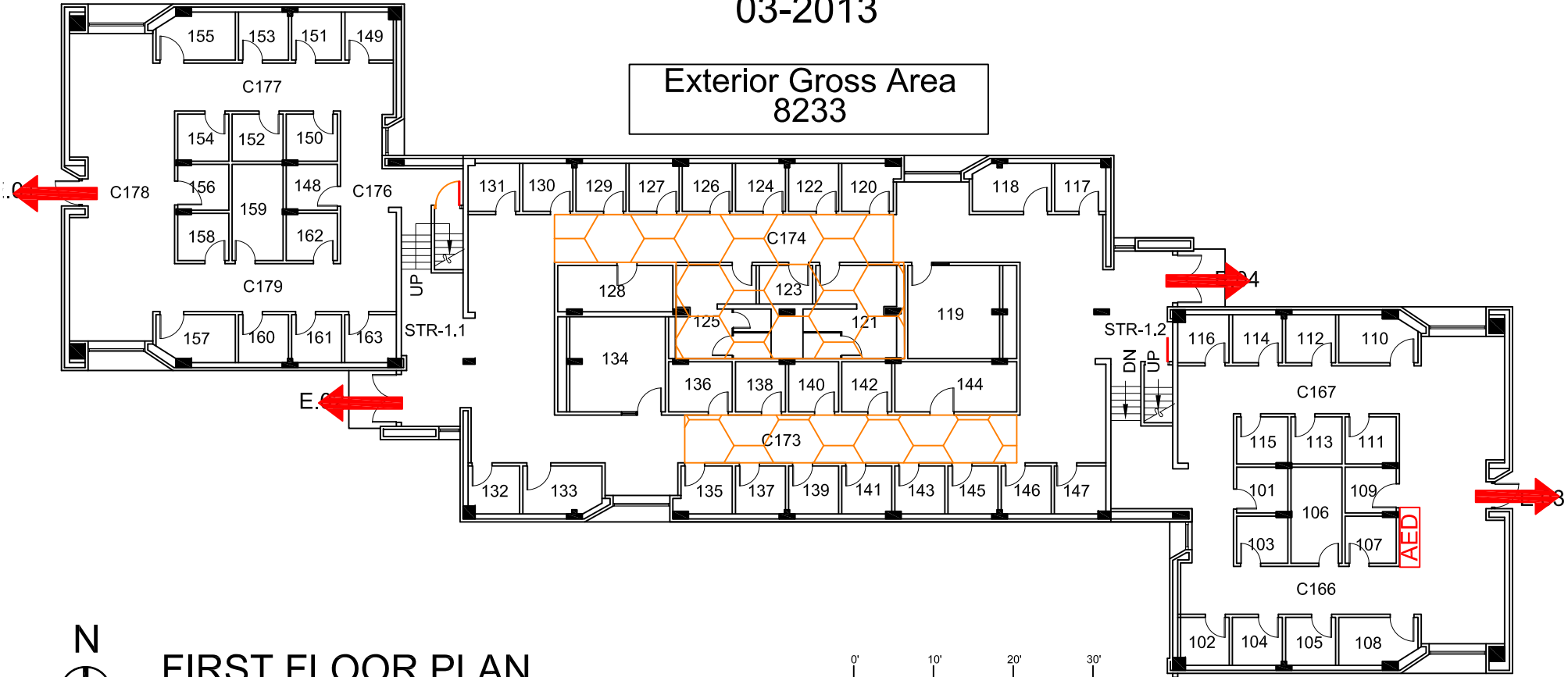


MUSIC PRACTICE SOUTH

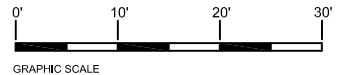
BUILDING #0125






03-2013

Exterior Gross Area
8233



FIRST FLOOR PLAN



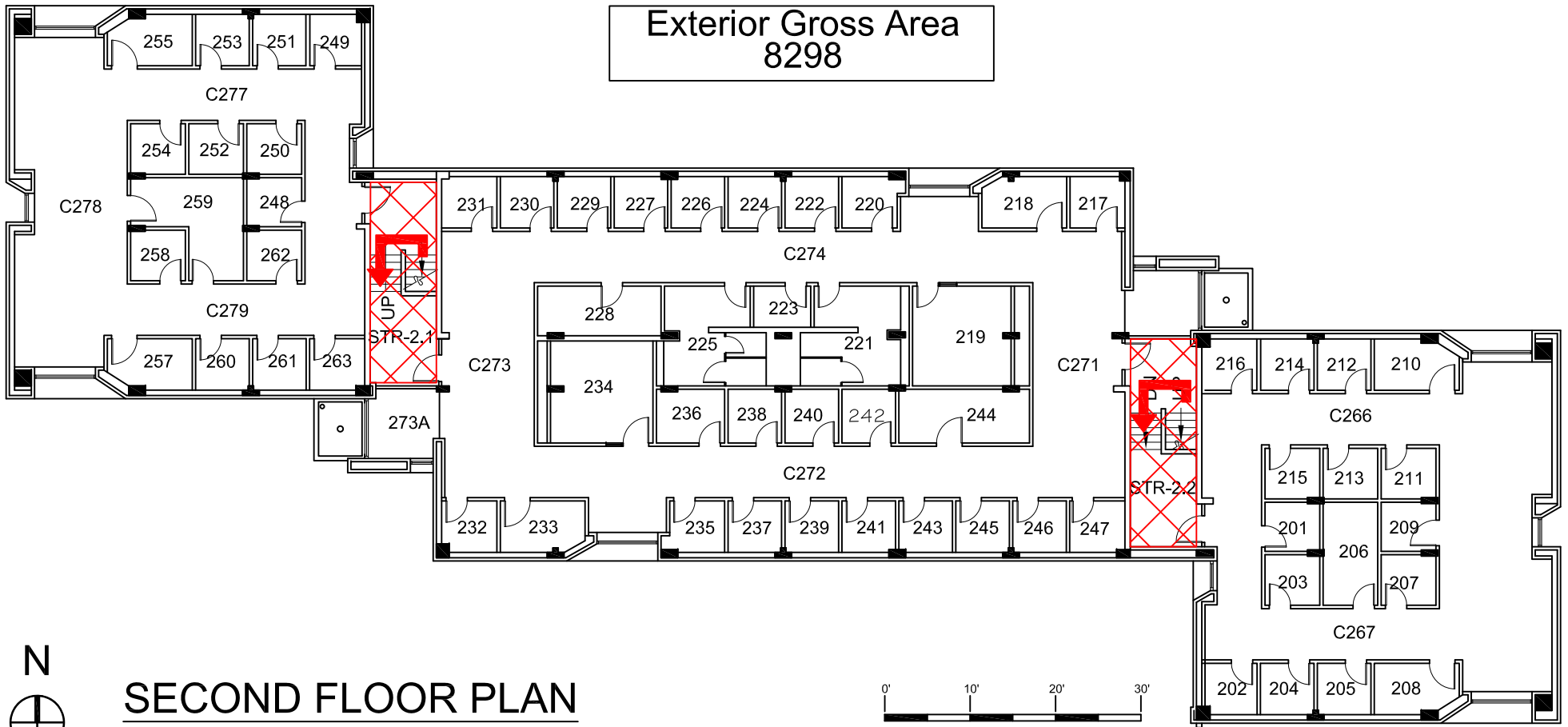
- Safety Legend**
-  Areas of Refuge
 -  Tornado Shelter Areas
 -  Exit/Evacuation Routes
 - In case of fire, do not use elevator*
 -  Automatic External Defibrillator
 -  Evacuation Chair

MUSIC PRACTICE SOUTH

BUILDING #0125

09-2009

Exterior Gross Area
8298



SECOND FLOOR PLAN

Safety Legend



Areas of Refuge



Tornado Shelter Areas

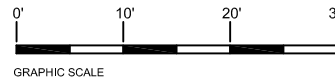


Exit/Evacuation Routes

In case of fire, do not use elevator

AED Automatic External Defibrillator

CHAIR Evacuation Chair

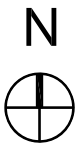
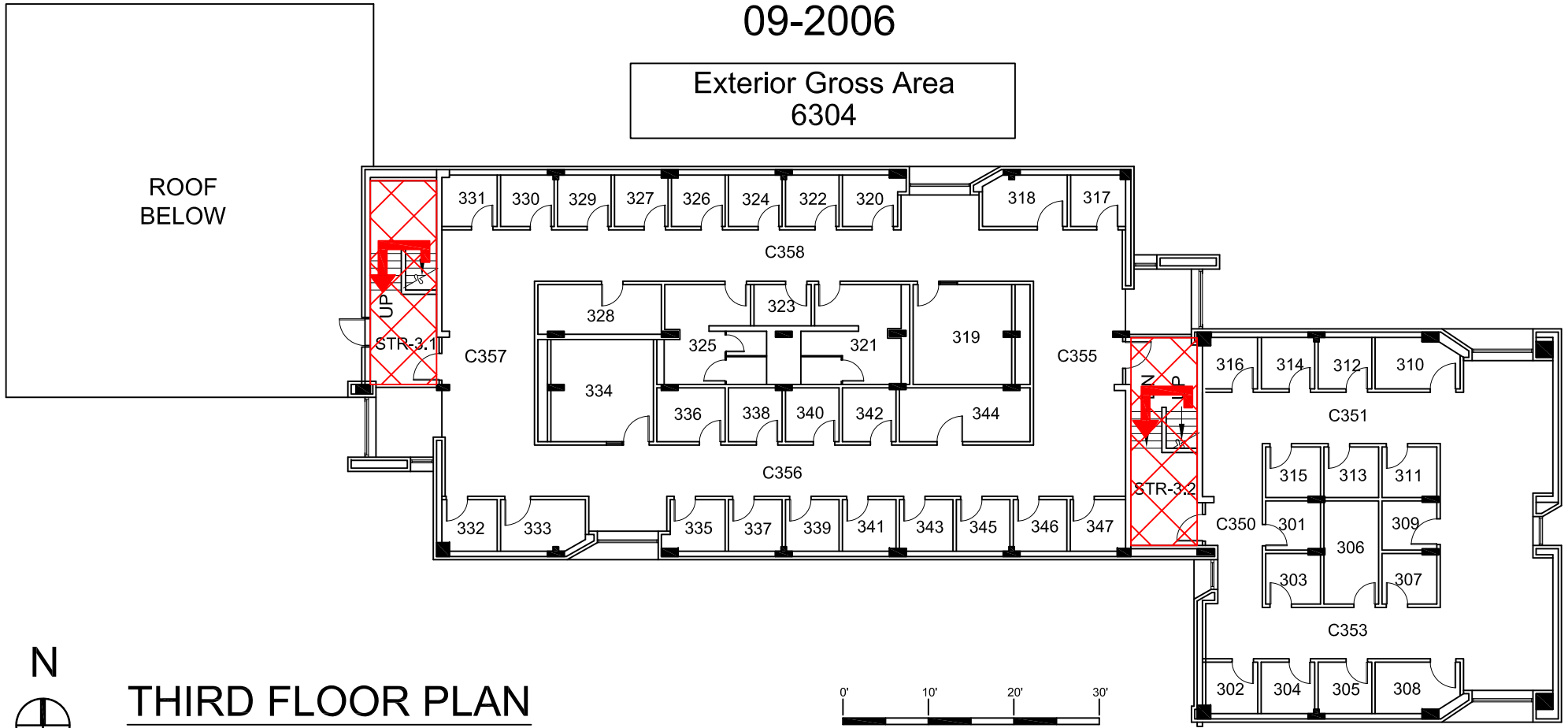


MUSIC PRACTICE SOUTH

BUILDING #0125

09-2006


Exterior Gross Area
6304




THIRD FLOOR PLAN


Safety Legend

 Areas of Refuge

 Tornado Shelter Areas

 Exit/Evacuation Routes

In case of fire, do not use elevator

 AED Automatic External Defibrillator

 CHAIR Evacuation Chair