

Emergency Evacuation Procedures

Music Building

1201 Mulberry St. Denton, TX 76201

Severe Weather

In the event of severe weather, all building occupants should immediately seek shelter in the designated shelter-in-place area in the building. If unable to safely move to the designated shelter-in-place area, seek shelter in a windowless interior room or hallway on the lowest floor of the building you have access to.

All building occupants should take shelter in the interior hallways on the 1st and 2nd floors. Avoid standing near windows, walls, and doors made of glass.

See following floorplan for designated recommended shelter areas.

Bomb Threat/Fire

In the event of a bomb threat or fire in the building, all building occupants should immediately evacuate the building using the nearest exit. Once outside, proceed to the designated assembly area. If unable to safely move to the designated assembly area, contact one or more members of your department or unit to let them know you are safe and inform them of your whereabouts.

All building occupants should immediately evacuate the building and proceed to Willis Library Mall east of the Music Building.

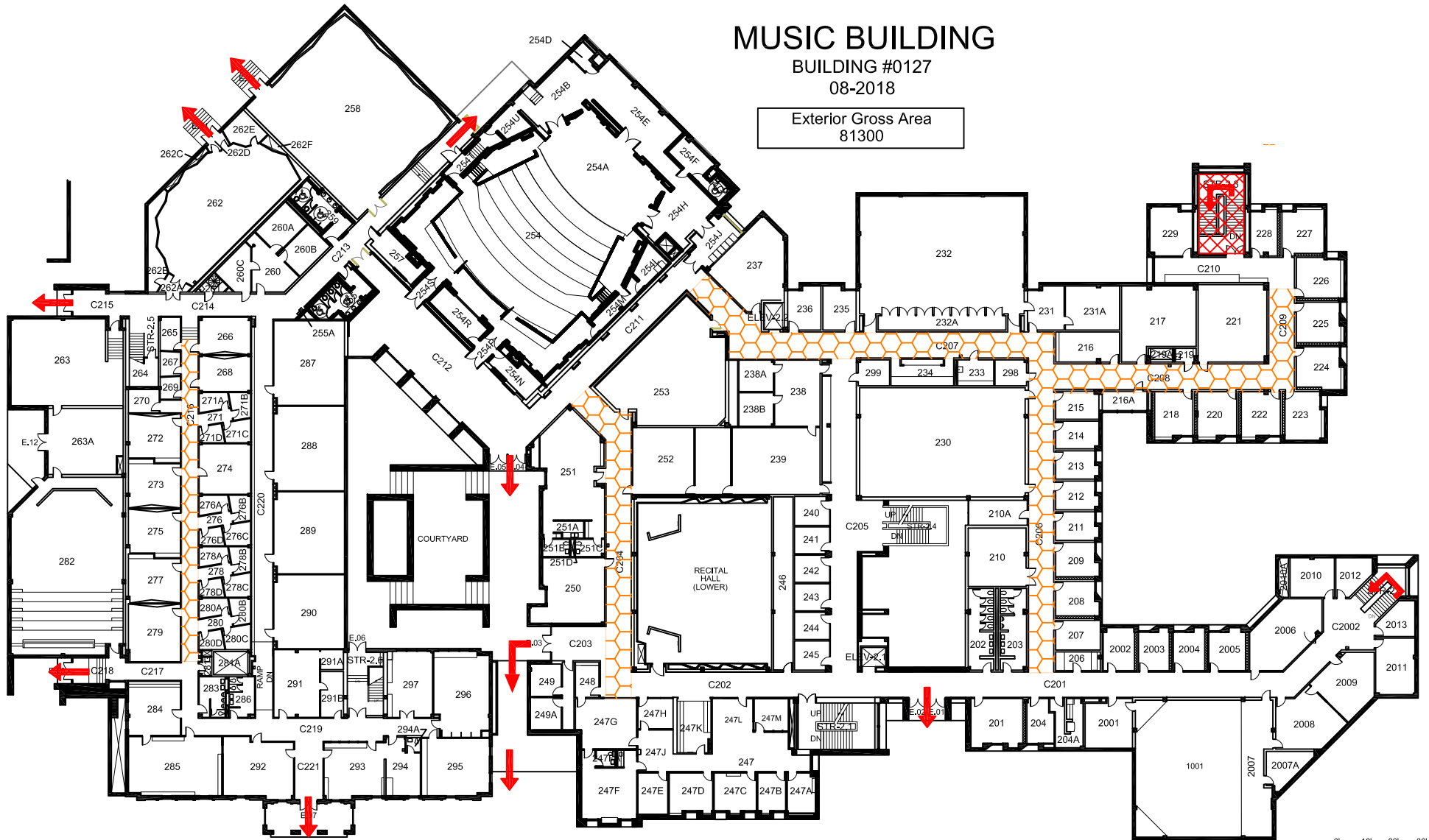


MUSIC BUILDING

BUILDING #0127

08-2018

Exterior Gross Area
81300



N ⊕ SECOND FLOOR PLAN

Safety Legend

▣ Areas of Refuge

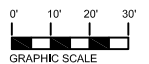
▣ Tornado Shelter Areas

➔ Exit/Evacuation Routes

In case of fire, do not use elevator

⊠ AED Automatic External Defibrillator

⊠ CHAIR Evacuation Chair



MUSIC BUILDING


BUILDING #0127
10-2010


Exterior Gross Area
23517




Safety Legend

-  Areas of Refuge
-  Tornado Shelter Areas

 Exit/Evacuation Routes
In case of fire, do not use elevator

 Automatic External Defibrillator

 Evacuation Chair

THIRD FLOOR PLAN

