

# Emergency Evacuation Procedures

## Music Annex

1630 W. Highland St., Denton TX 76201

### Severe Weather

In the event of severe weather, all building occupants should immediately seek shelter in the designated shelter-in-place area in the building. If unable to safely move to the designated shelter-in-place area, seek shelter in a windowless interior room or hallway on the lowest floor of the building.

**All building occupants should take shelter in the main interior hall of the building. If unable to shelter in place proceed immediately to the Music Practice South building, west of the annex or the Music building, north of the annex. Seek shelter on the lowest floors.**

**Avoid standing near windows, walls, and doors made of glass.**

---

### Bomb Threat/Fire

In the event of a bomb threat or fire in the building, all building occupants should immediately evacuate the building using the nearest exit. Once outside, proceed to the designated assembly area. If unable to safely move to the designated assembly area, contact one or more members of your department or unit to let them know you are safe and inform them of your whereabouts.

Persons with mobility impairments who are unable to safely exit the building should move to a designated area of refuge and await assistance from emergency responders.

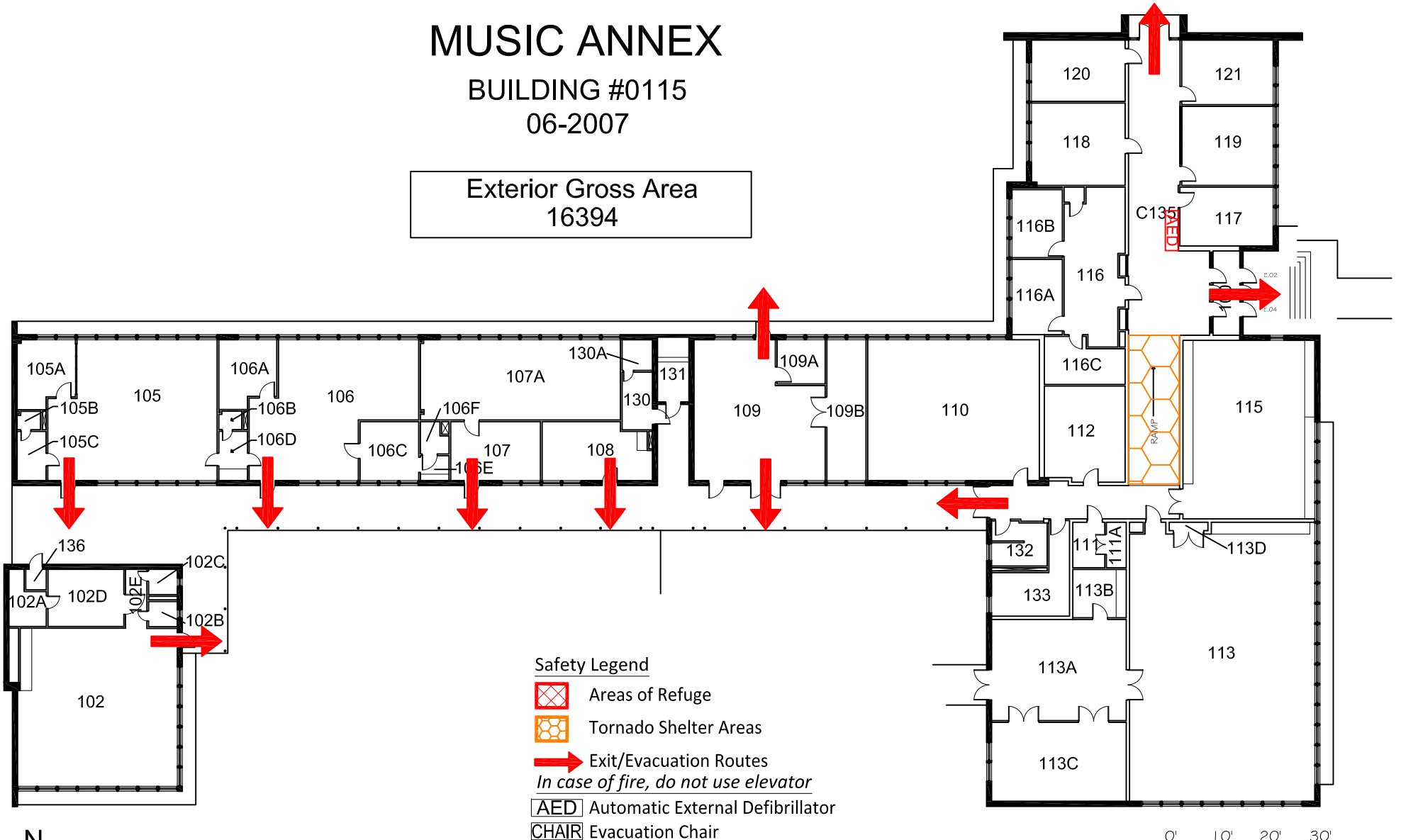
**All building occupants should immediately evacuate the building and proceed to the Willis library Mall, east of the Music Building.**




# MUSIC ANNEX


BUILDING #0115  
06-2007


Exterior Gross Area  
16394



### Safety Legend


 Areas of Refuge

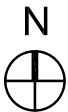
 Tornado Shelter Areas

 Exit/Evacuation Routes

*In case of fire, do not use elevator*

 AED Automatic External Defibrillator

 CHAIR Evacuation Chair



FIRST FLOOR PLAN

