

# Emergency Evacuation Procedures

## Mozart Square Hall

911 North Texas Blvd. Denton, TX 76201

### Severe Weather

In the event of severe weather, all building occupants should immediately seek shelter in the designated shelter-in-place area in the building. If unable to safely move to the designated shelter-in-place area, seek shelter in a windowless interior room or hallway on the lowest floor of the building.

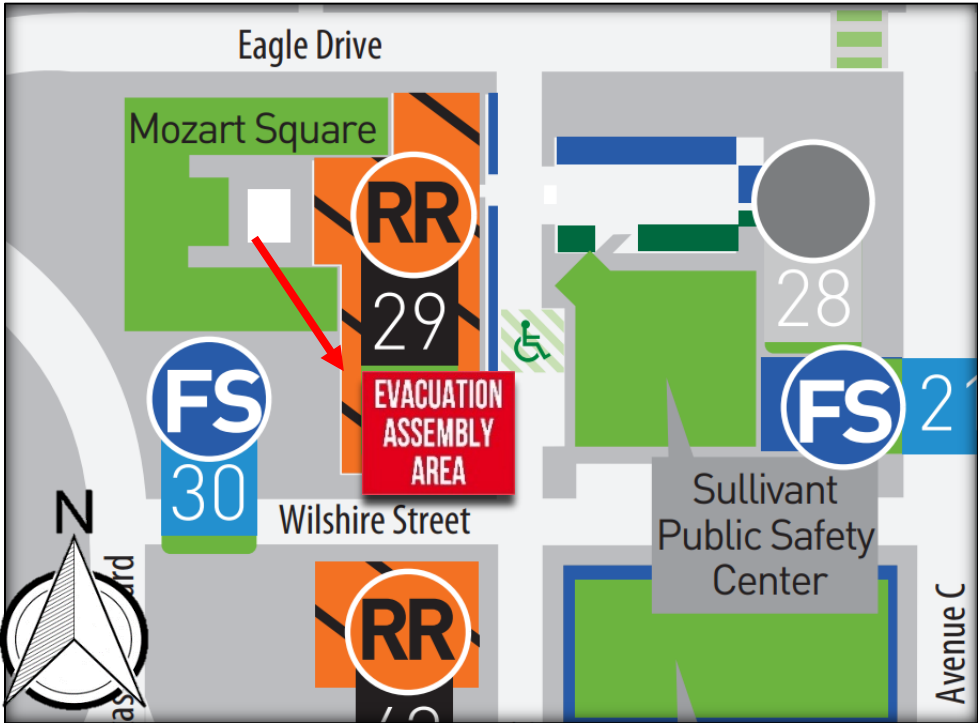
**All building occupants should take shelter the interior hallways and restrooms on the first floor. Avoid standing near windows, walls and doors made of glass.**

### Bomb Threat/Fire

In the event of a bomb threat or fire in the building, all building occupants should immediately evacuate the building using the nearest exit. Once outside, proceed to the designated assembly area. If unable to safely move to the designated assembly area, contact your RA to let them know you are safe and inform them of your whereabouts.

Persons with mobility impairments who are unable to safely exit the building should move to a designated area of refuge and await assistance from emergency responders.

**All building occupants should immediately evacuate the building and proceed to the southeast corner of parking lot 29.**

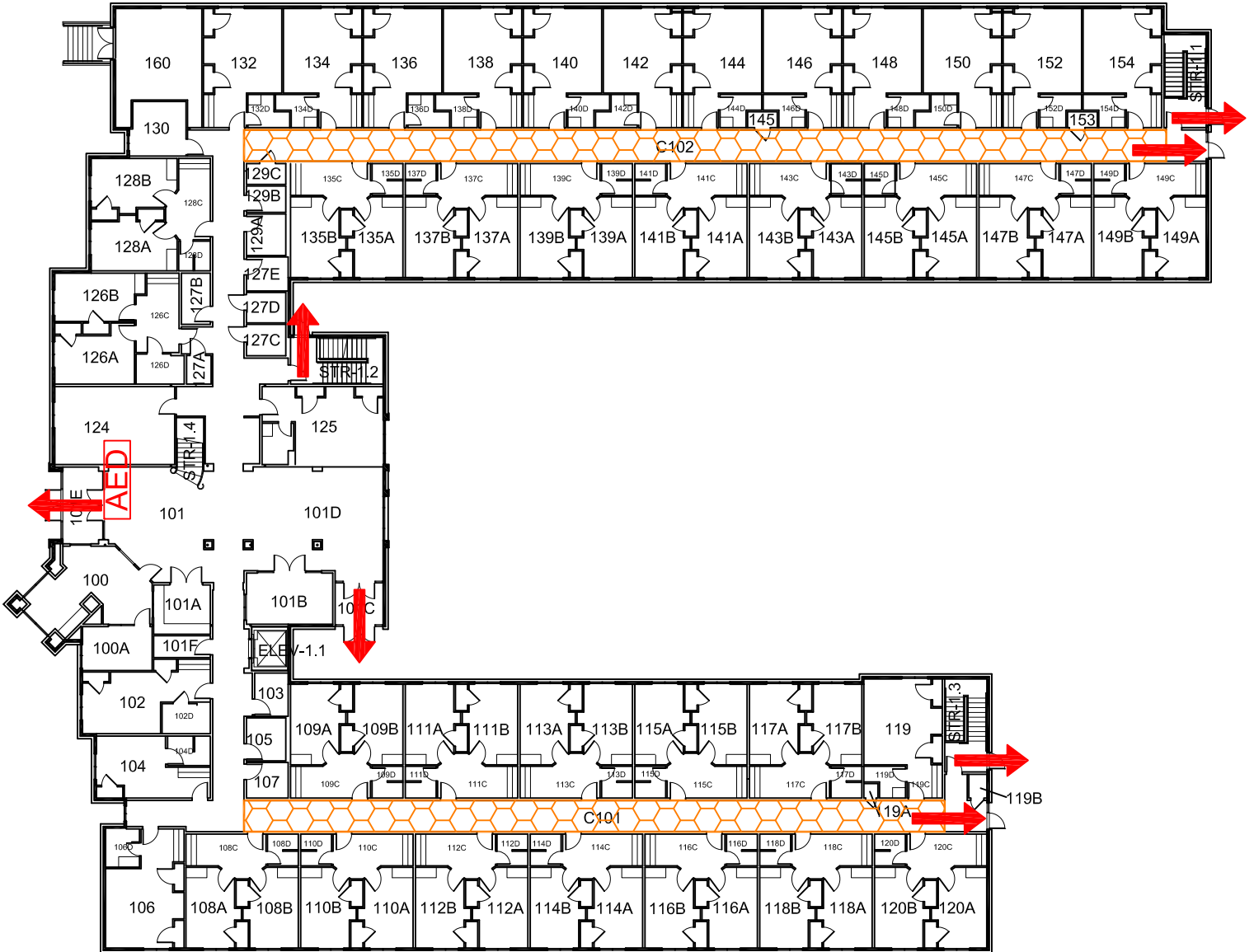


# MOZART SQUARE HALL

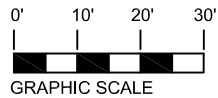
BUILDING #0186

08-2018

Exterior Gross Area  
25043





## FIRST FLOOR PLAN




### Safety Legend

 Areas of Refuge

 Tornado Shelter Areas

 Exit/Evacuation Routes

*In case of fire, do not use elevator*

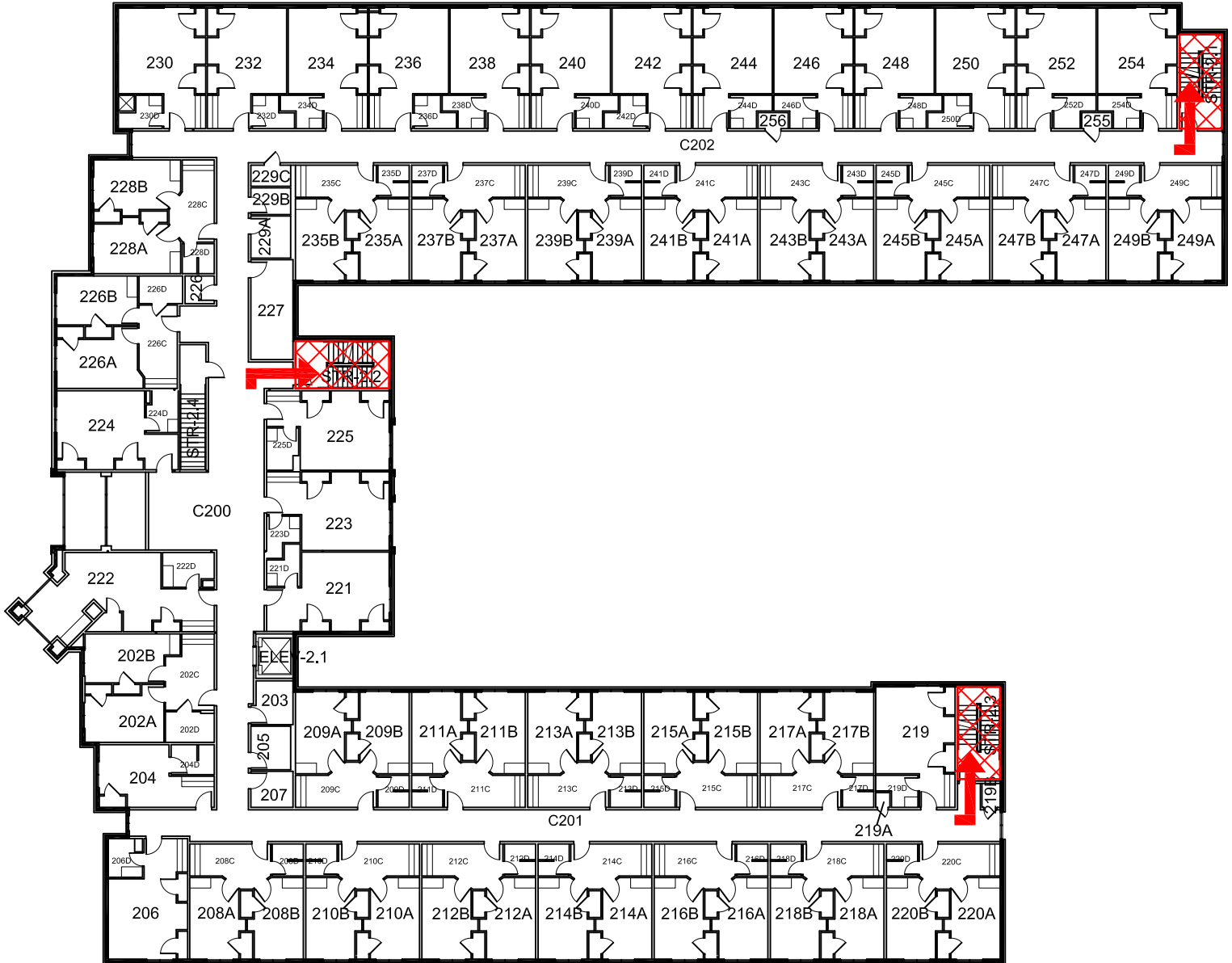
 Automatic External Defibrillator

# MOZART SQUARE HALL

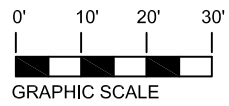
BUILDING # 0186

09-2018



Exterior Gross Area  
24784




## SECOND FLOOR PLAN



### Safety Legend

-  Areas of Refuge
-  Tornado Shelter Areas

 Exit/Evacuation Routes

*In case of fire, do not use elevator*

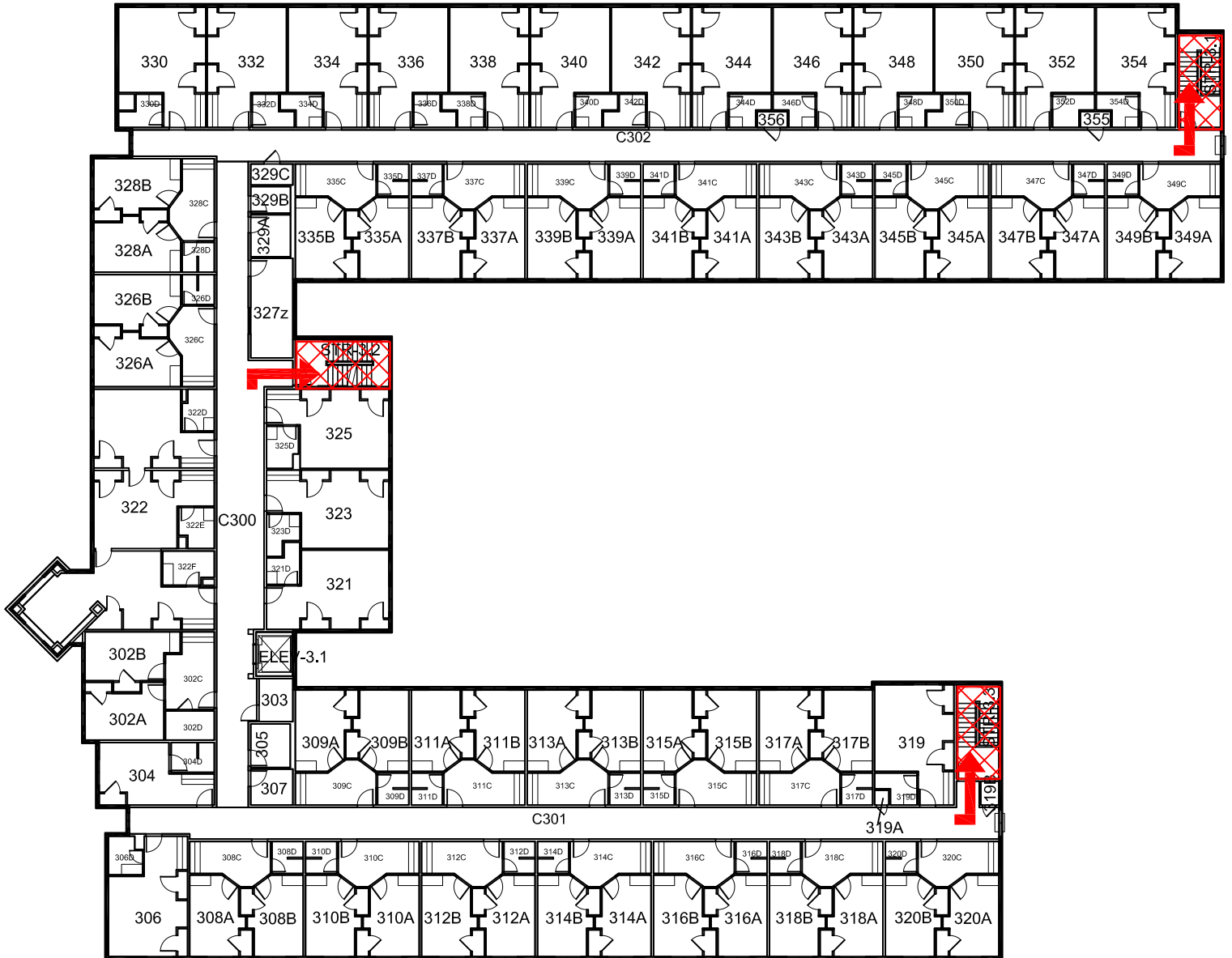
 AED Automatic External Defibrillator

# MOZART SQUARE HALL

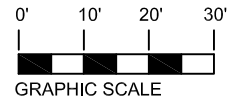
BUILDING #0186

09-2018

Exterior Gross Area  
24294



## THIRD FLOOR PLAN



### Safety Legend



Areas of Refuge



Tornado Shelter Areas



Exit/Evacuation Routes

*In case of fire, do not use elevator*

**AED** Automatic External Defibrillator