

# Emergency Evacuation Procedures

## MGV Building C- Provost Office

1528 S. Bonnie Brae St., Denton, TX 76207

### Severe Weather

In the event of severe weather, all building occupants should immediately seek shelter in the designated shelter-in-place area in the building. If unable to safely move to the designated shelter-in-place area, seek shelter in a windowless interior room or hallway on the lowest floor of the building.

**All building occupants should take shelter the interior main hallway of the Student Athlete Academic Center.**

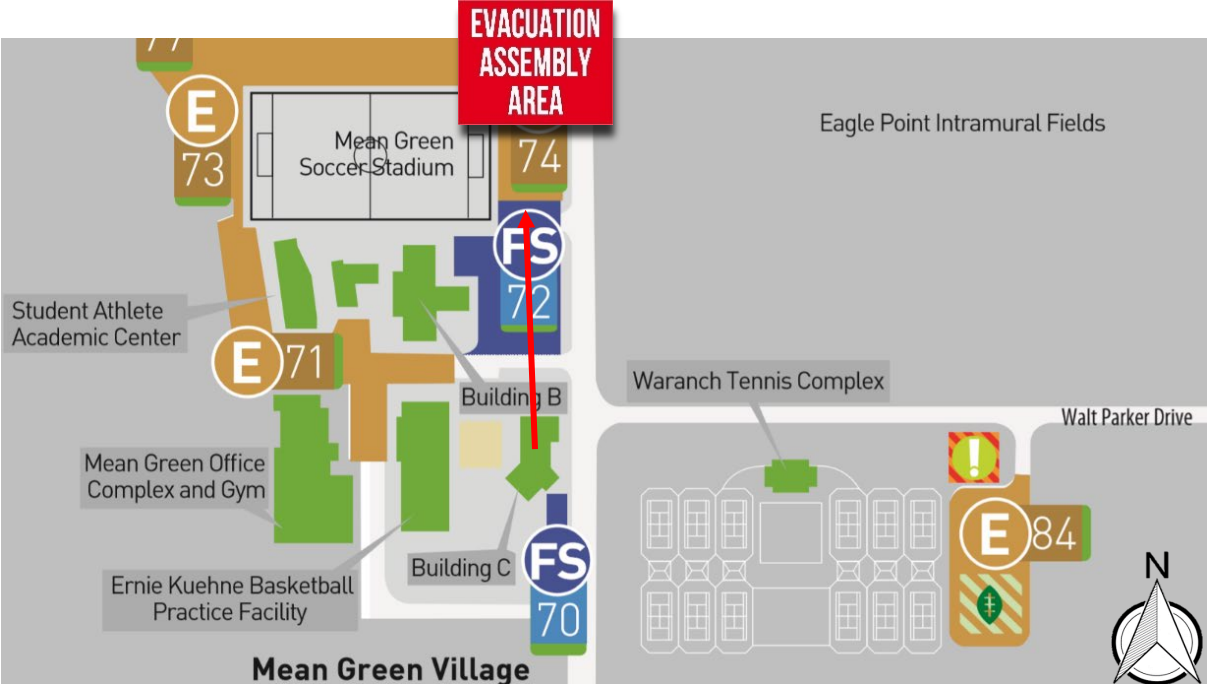
---

### Bomb Threat/Fire

In the event of a bomb threat or fire in the building, all building occupants should immediately evacuate the building using the nearest exit. Once outside, proceed to the designated assembly area. If unable to safely move to the designated assembly area, contact one or more members of your department or unit to let them know you are safe and inform them of your whereabouts.

Persons with mobility impairments who are unable to safely exit the building should move to a designated area of refuge and await assistance from emergency responders.

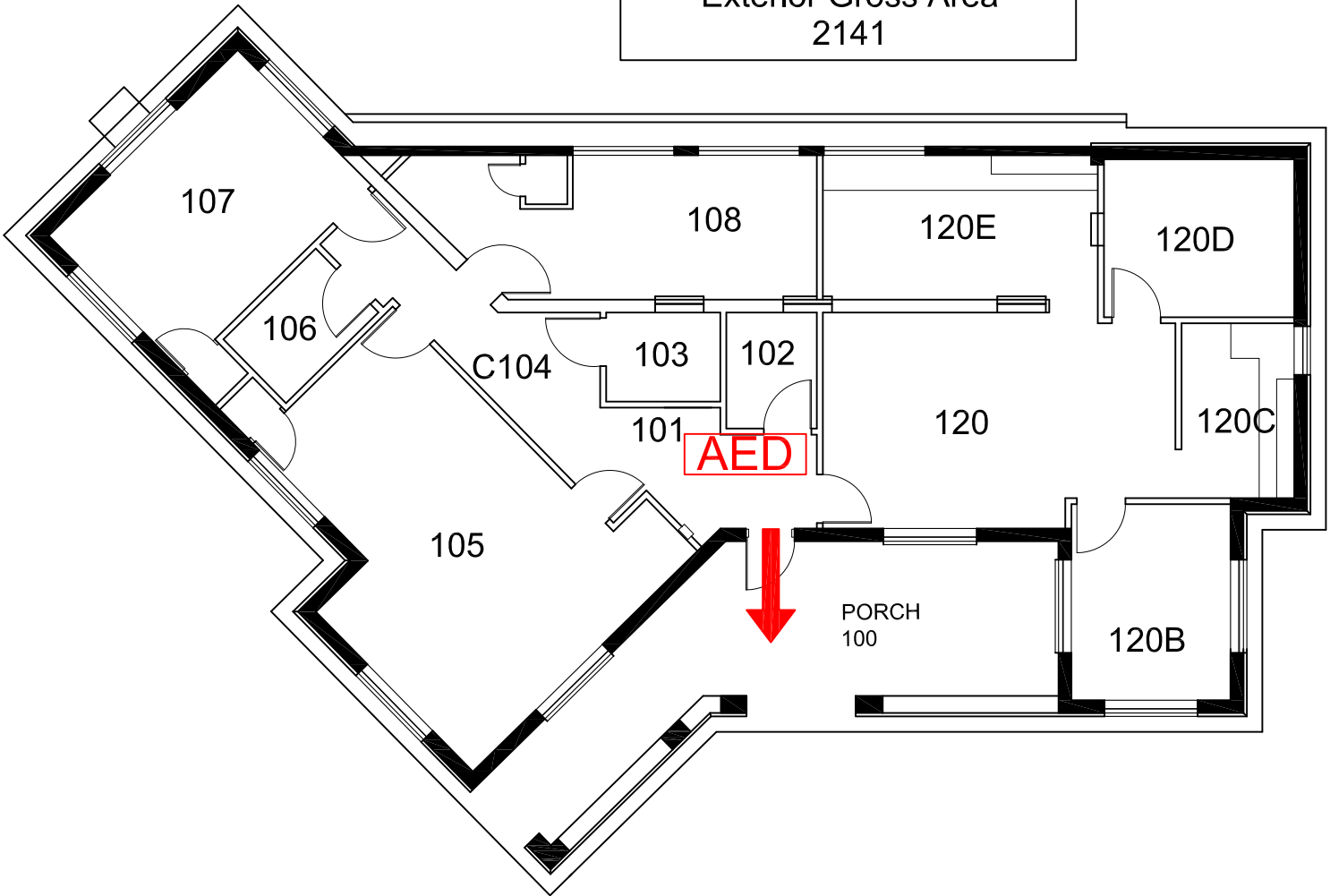
**All building occupants should immediately evacuate the building and proceed to parking lot 74 east of the soccer stadium, north of building C.**



# MEAN GREEN VILLAGE PROVOST OFFICE - BLDG C

BUILDING C #0452  
07-2009

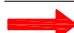

Exterior Gross Area  
2141



## FIRST FLOOR PLAN



GRAPHIC SCALE

- Safety Legend**
-  Exit/Evacuation Routes  
*In case of fire, do not use elevator*
  -  Automatic External Defibrillator

During severe weather, all building occupants should take shelter in the Athlete Academic Center located next to the soccer field.