

Emergency Evacuation Procedures

MGV Building G- Softball & Golf Facility/ Ernie Kuenhe Basketball Practice Facility
1532 S. Bonnie Brae St. Denton, TX 76207

Severe Weather

In the event of severe weather, all building occupants should immediately seek shelter in the designated shelter-in-place area in the building. If unable to safely move to the designated shelter-in-place area, seek shelter in a windowless interior room or hallway on the lowest floor of the building.

All building occupants should seek shelter in the main interior hallway of the Student Athlete Academic Center.

Bomb Threat/Fire

In the event of a bomb threat or fire in the building, all building occupants should immediately evacuate the building using the nearest exit. Once outside, proceed to the designated assembly area. If unable to safely move to the designated assembly area, contact one or more members of your department or unit to let them know you are safe and inform them of your whereabouts.

Persons with mobility impairments who are unable to safely exit the building should move to a designated area of refuge and await assistance from emergency responders.

All building occupants should immediately evacuate the building and proceed to parking lot 72 north of the Basketball Practice Facility.





ERNIE KUEHNE BASKETBALL PRACTICE FACILITY

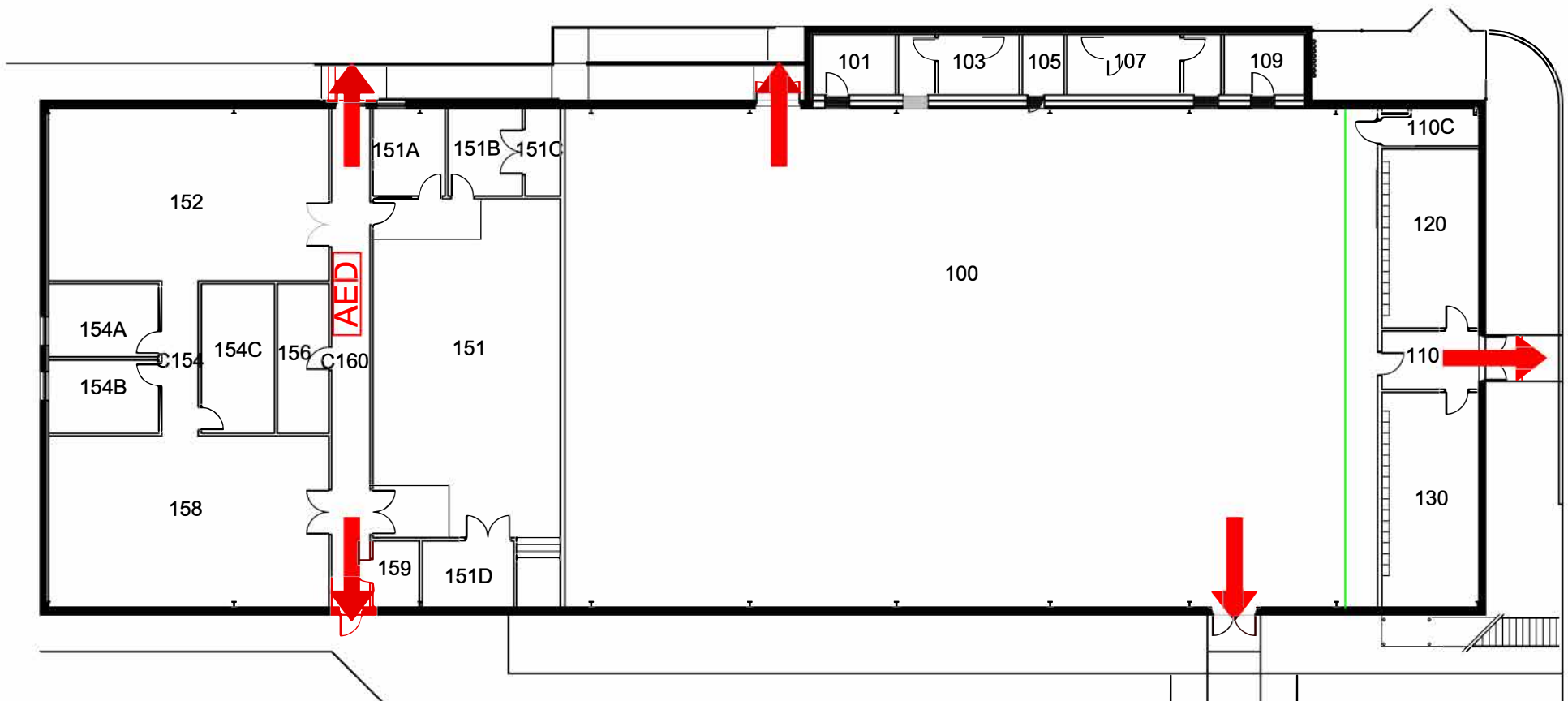
BUILDING G #0456
03-2015

During severe weather, all building occupants should take shelter in the Athlete Academic Center located next to the soccer field.

Exterior Gross Area
14557

Safety Legend

-  Exit/Evacuation Routes
- In case of fire, do not use elevator*
-  Automatic External Defibrillator



FIRST FLOOR PLAN

