

Emergency Evacuation Procedures

Matthews Hall

1300 W. Highland St. Denton, TX, 76201

Severe Weather

In the event of severe weather, all building occupants should immediately seek shelter in the designated shelter-in-place area in the building. If unable to safely move to the designated shelter-in-place area, seek shelter in a windowless interior room or hallway on the lowest floor of the building.

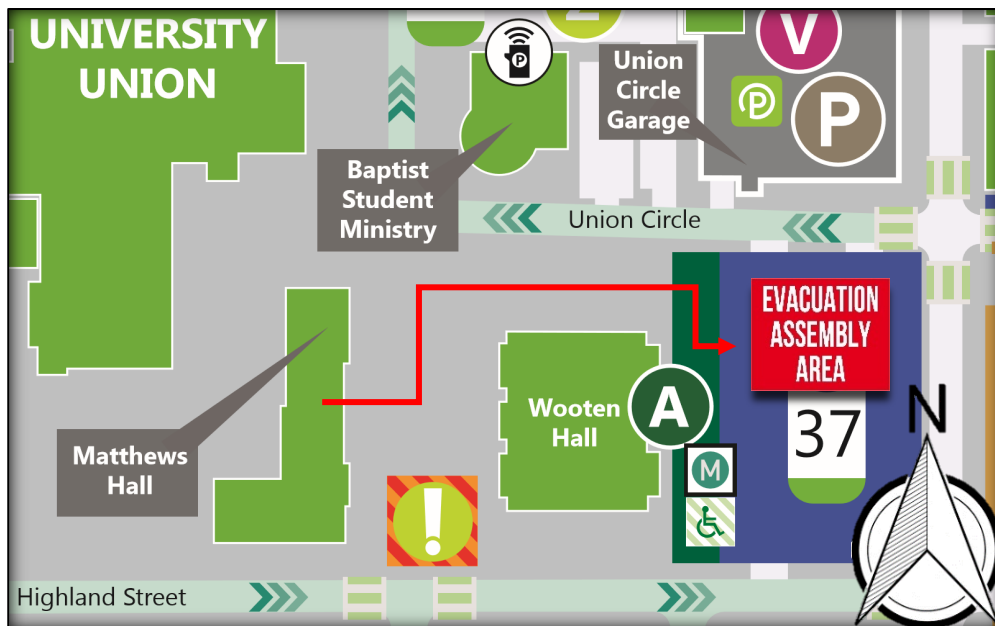
Building occupants should take shelter on the first floor inside the restrooms and interior hallway. Seek additional shelter in the interior suites of 117. Avoid standing near windows, walls and doors made of glass.

Bomb Threat/Fire

In the event of a bomb threat or fire in the building, all building occupants should immediately evacuate the building using the nearest exit. Once outside, proceed to the designated assembly area. If unable to safely move to the designated assembly area, contact one or more members of your department or unit to let them know you are safe and inform them of your whereabouts.

Persons with mobility impairments who are unable to safely exit the building should move to a designated area of refuge and await assistance from emergency responders.

All building occupants should immediately evacuate the building and proceed to parking lot 37 east of Wooten Hall

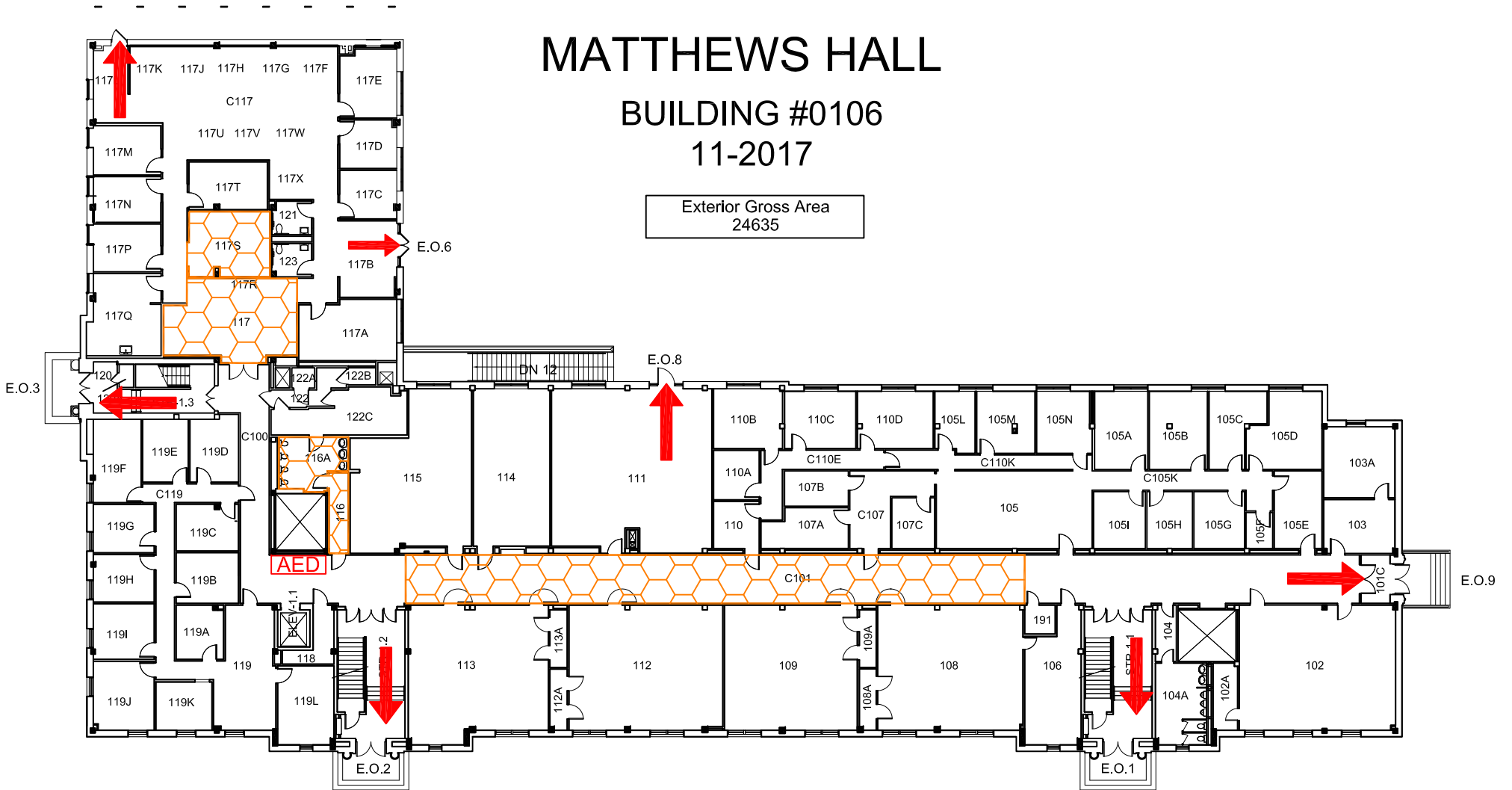


MATTHEWS HALL

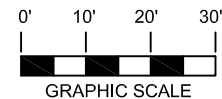
BUILDING #0106

11-2017






Exterior Gross Area
24635



FIRST FLOOR PLAN



Safety Legend

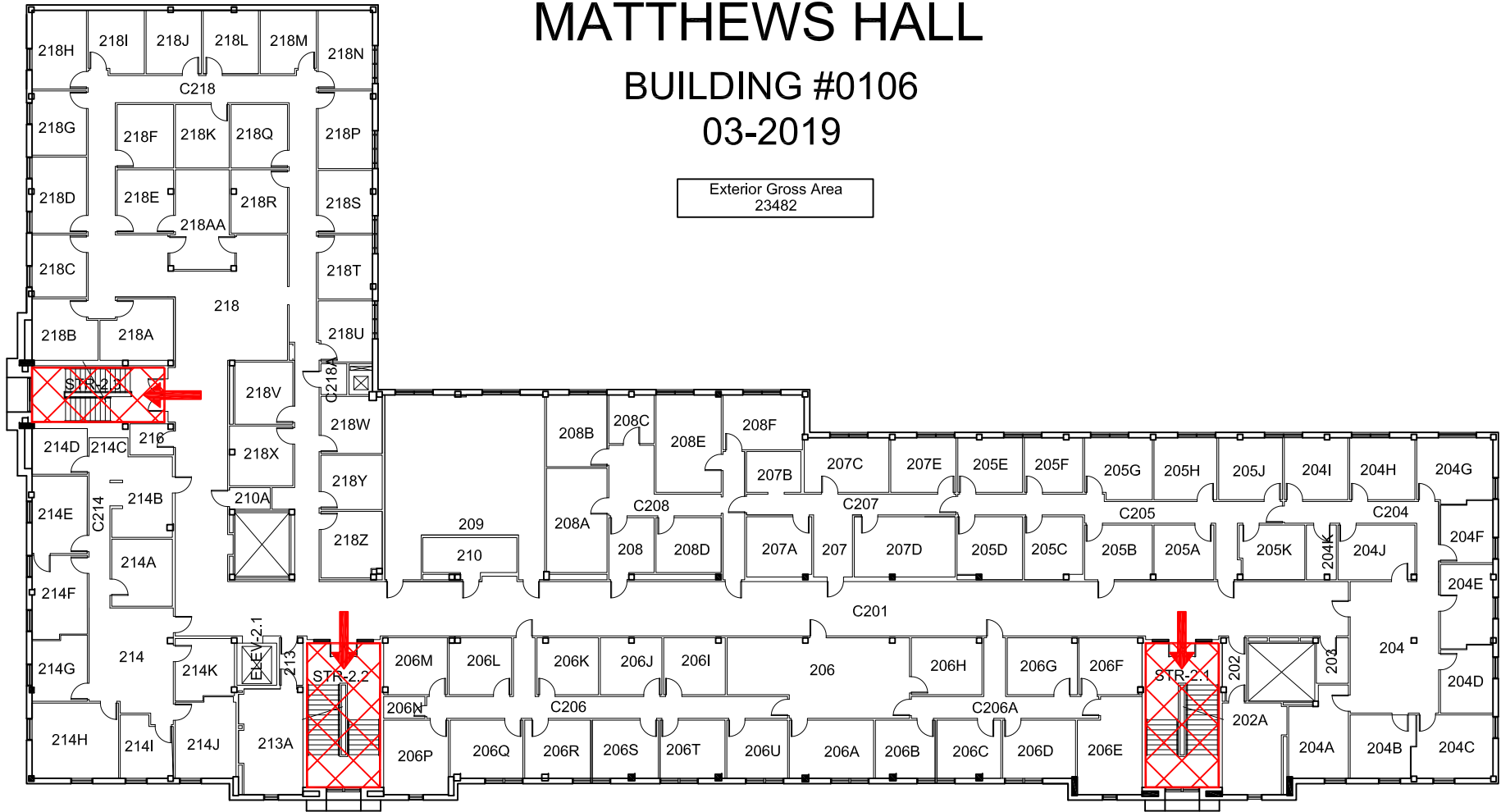
-  Areas of Refuge
-  Tornado Shelter Areas
-  Exit/Evacuation Routes
- In case of fire, do not use elevator*
-  Automatic External Defibrillator
-  Evacuation Chair

MATTHEWS HALL

BUILDING #0106

03-2019

Exterior Gross Area
23482



SECOND FLOOR PLAN

Safety Legend



Areas of Refuge



Tornado Shelter Areas



Exit/Evacuation Routes

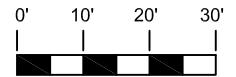
In case of fire, do not use elevator



Automatic External Defibrillator



Evacuation Chair



GRAPHIC SCALE

