

Emergency Evacuation Procedures

Marquis Hall

1511 W. Mulberry St. Denton, TX 76201

Severe Weather

In the event of severe weather, all building occupants should immediately seek shelter in the designated shelter-in-place area in the building. If unable to safely move to the designated shelter-in-place area, seek shelter in a windowless interior room or hallway on the lowest floor of the building.

All building occupants should take shelter on the first floor interior hallways and restrooms.

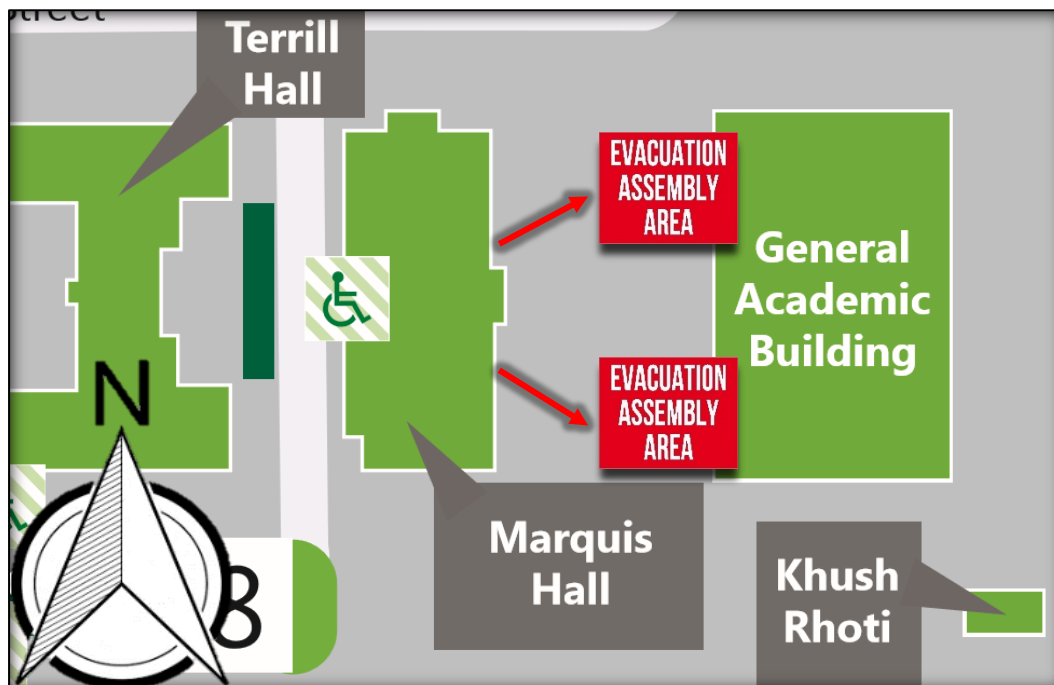
Additional shelter areas include rooms 107, 125 and 145. Avoid standing near windows, walls and doors made of glass.

Bomb Threat/Fire

In the event of a bomb threat or fire in the building, all building occupants should immediately evacuate the building using the nearest exit. Once outside, proceed to the designated assembly area. If unable to safely move to the designated assembly area, contact one or more members of your department or unit to let them know you are safe and inform them of your whereabouts.

Persons with mobility impairments who are unable to safely exit the building should move to a designated area of refuge and await assistance from emergency responders.

All building occupants should immediately evacuate the building and proceed to the east side of the building, west of the General Academic Building.

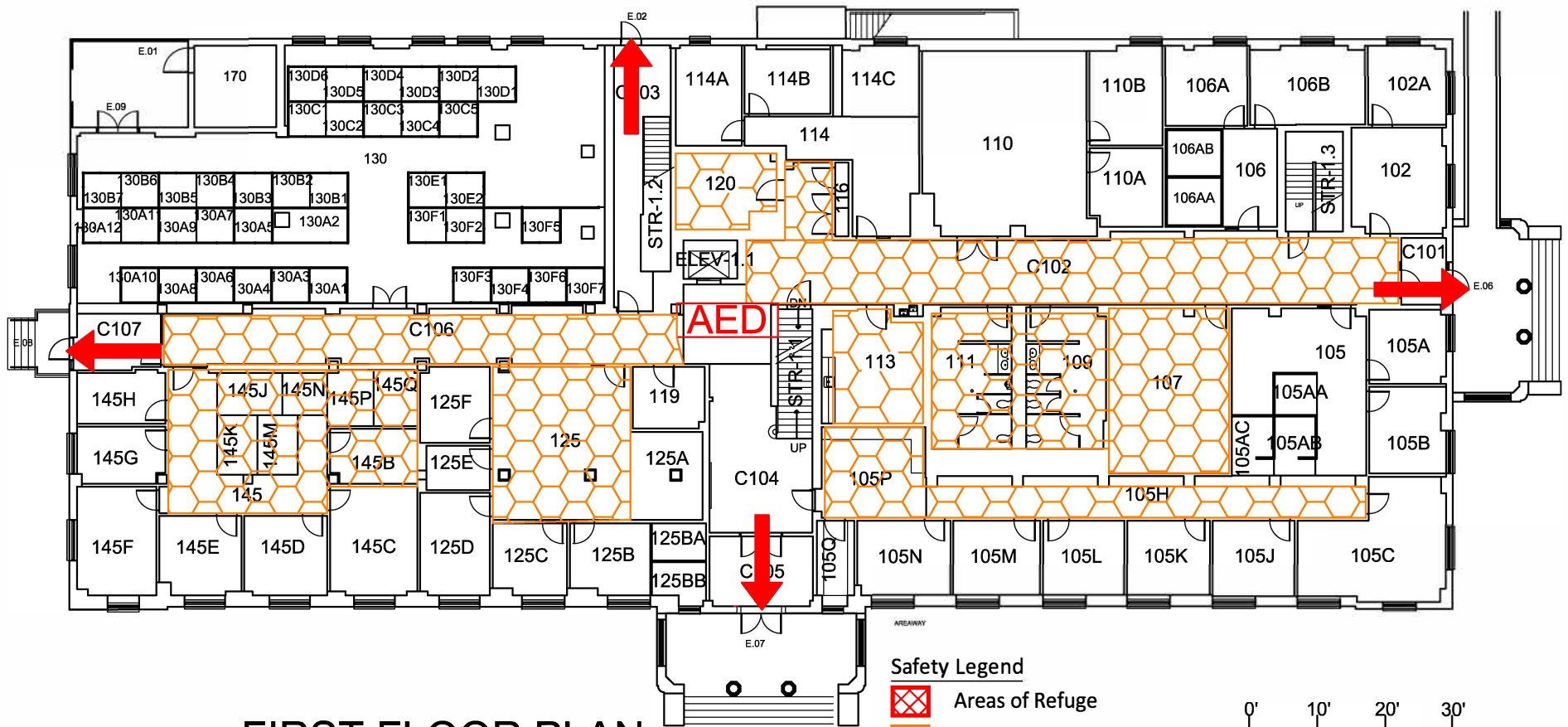


MARQUIS HALL





BUILDING #0130

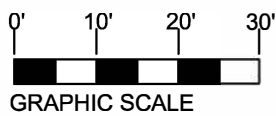
02-2018

Exterior Gross Area
17013



FIRST FLOOR PLAN

- Safety Legend**
-  Areas of Refuge
 -  Tornado Shelter Areas
 -  Exit/Evacuation Routes
 - In case of fire, do not use elevator*
 -  Automatic External Defibrillator

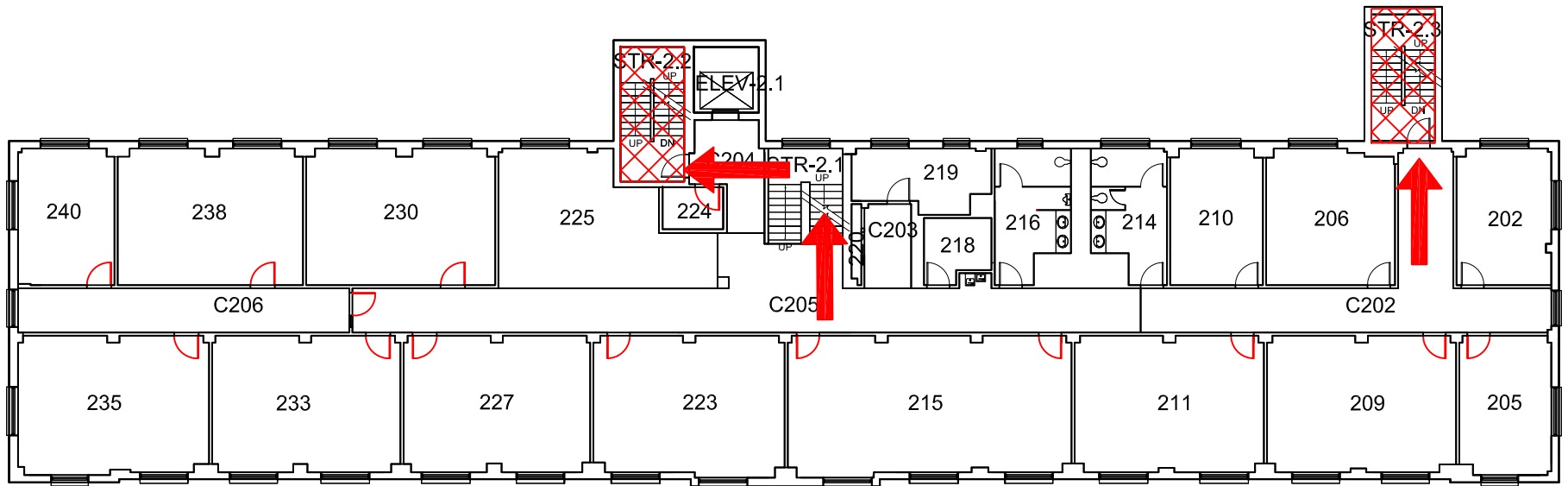


MARQUIS HALL

BUILDING #0130





05-2015

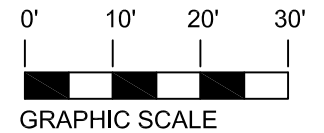
Exterior Gross Area
9635



SECOND FLOOR PLAN

Safety Legend

-  Areas of Refuge
-  Tornado Shelter Areas
-  Exit/Evacuation Routes
- In case of fire, do not use elevator*
-  Automatic External Defibrillator

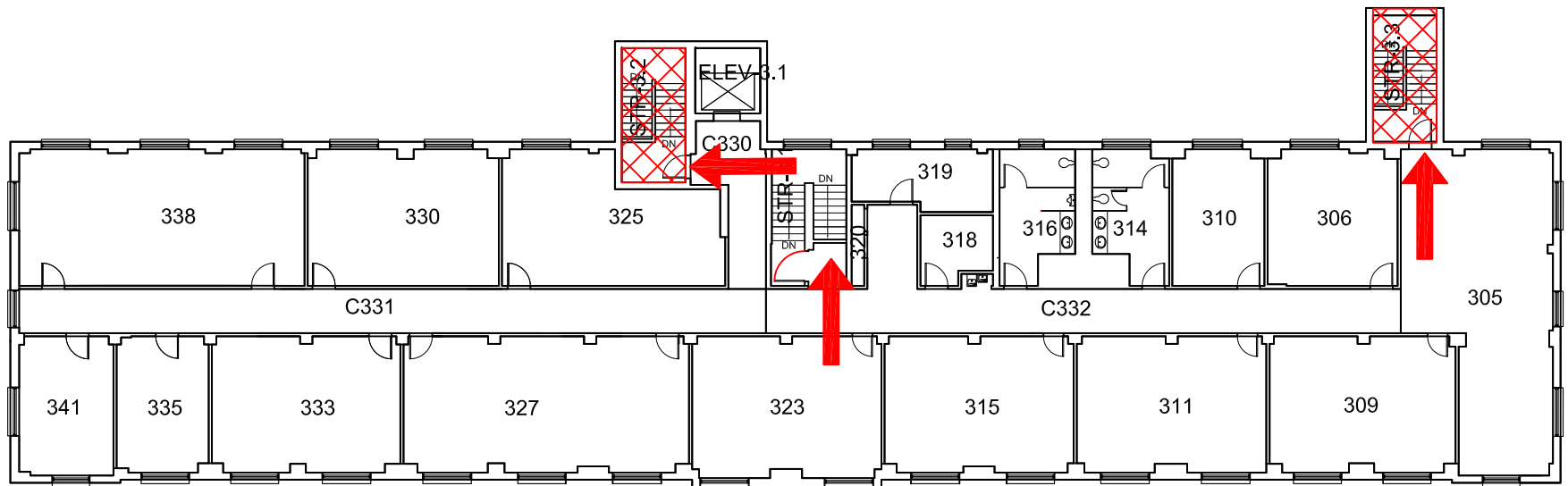


MARQUIS HALL

BUILDING #0130





05-2015

Exterior Gross Area
9635



THIRD FLOOR PLAN

Safety Legend

-  Areas of Refuge
-  Tornado Shelter Areas
-  Exit/Evacuation Routes
In case of fire, do not use elevator
-  AED Automatic External Defibrillator

