

Emergency Evacuation Procedures

Maple Street Hall

1621 Maple St. Denton, TX 76201

Severe Weather

In the event of severe weather, all building occupants should immediately seek shelter in the designated shelter-in-place area in the building. If unable to safely move to the designated shelter-in-place area, seek shelter in a windowless interior room or hallway on the lowest floor of the building.

All building occupants should take shelter the interior hallways and restrooms on the lowest floor of their respective wing. Avoid standing near windows, walls and doors made of glass.

Bomb Threat/Fire

In the event of a bomb threat or fire in the building, all building occupants should immediately evacuate the building using the nearest exit. Once outside, proceed to the designated assembly area. If unable to safely move to the designated assembly area, contact one or more members of your department or unit to let them know you are safe and inform them of your whereabouts.

Persons with mobility impairments who are unable to safely exit the building should move to a designated area of refuge and await assistance from emergency responders.

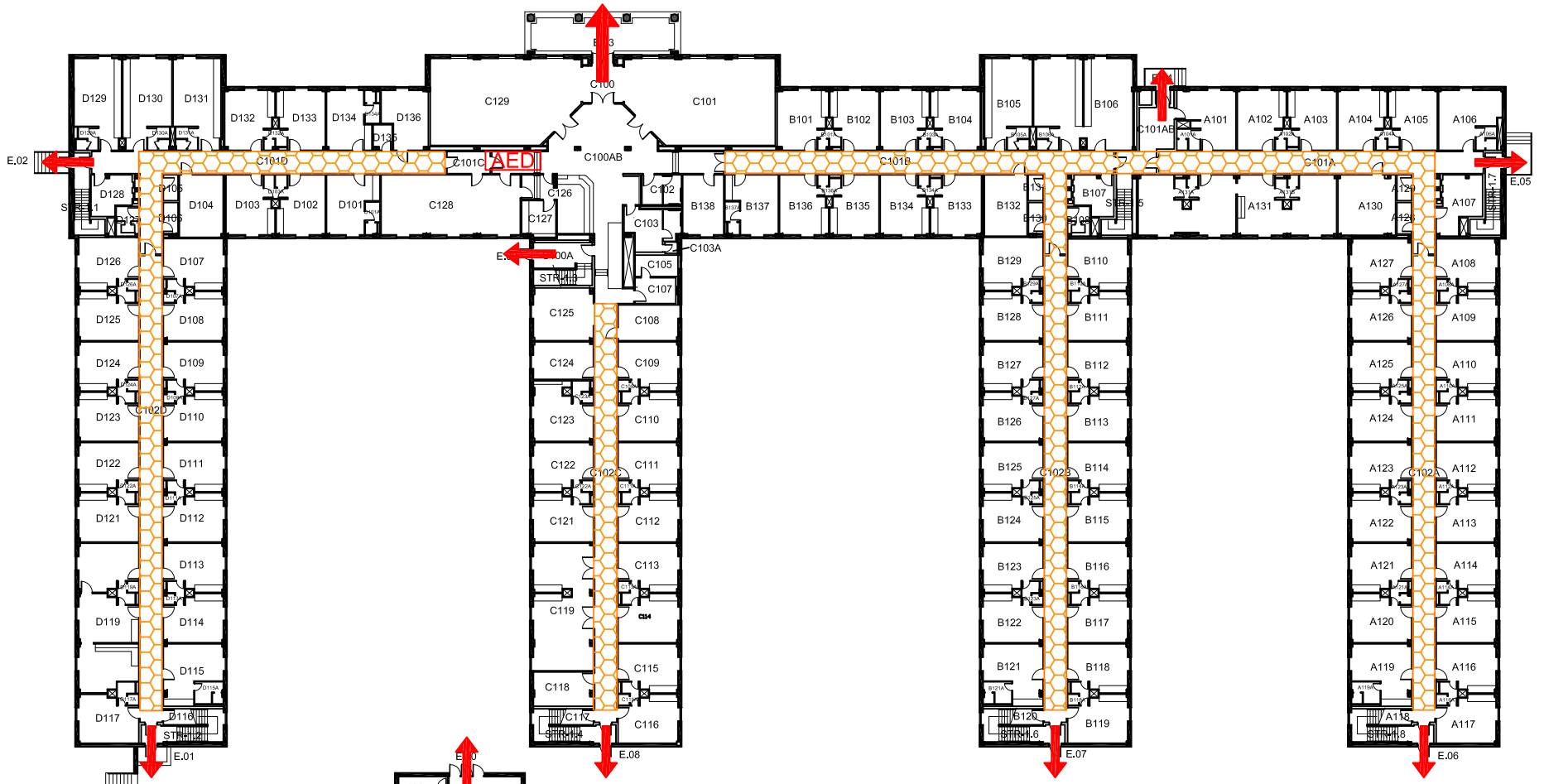
All building occupants should immediately evacuate the building and proceed the southeast corner of parking lot 23 South of Maple Street Hall.



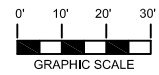
MAPLE STREET HALL

BLDG #0182
04-2019





Exterior Gross Area
50500

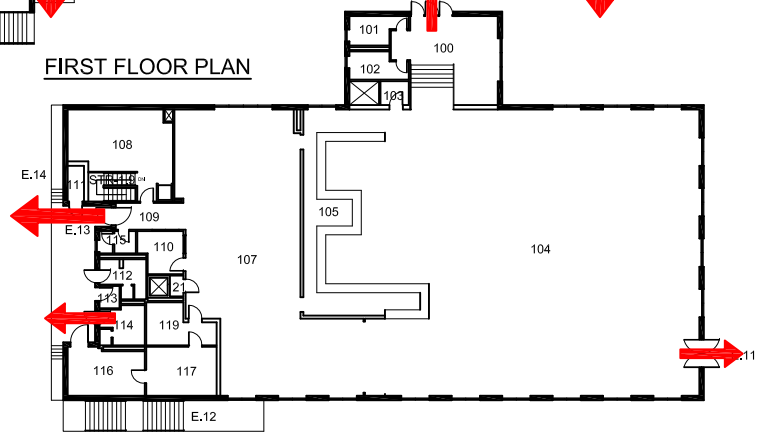


FIRST FLOOR PLAN



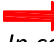



Safety Legend

-  Areas of Refuge
-  Tornado Shelter Areas
-  Exit/Evacuation Routes
- In case of fire, do not use elevator*
-  Automatic External Defibrillator



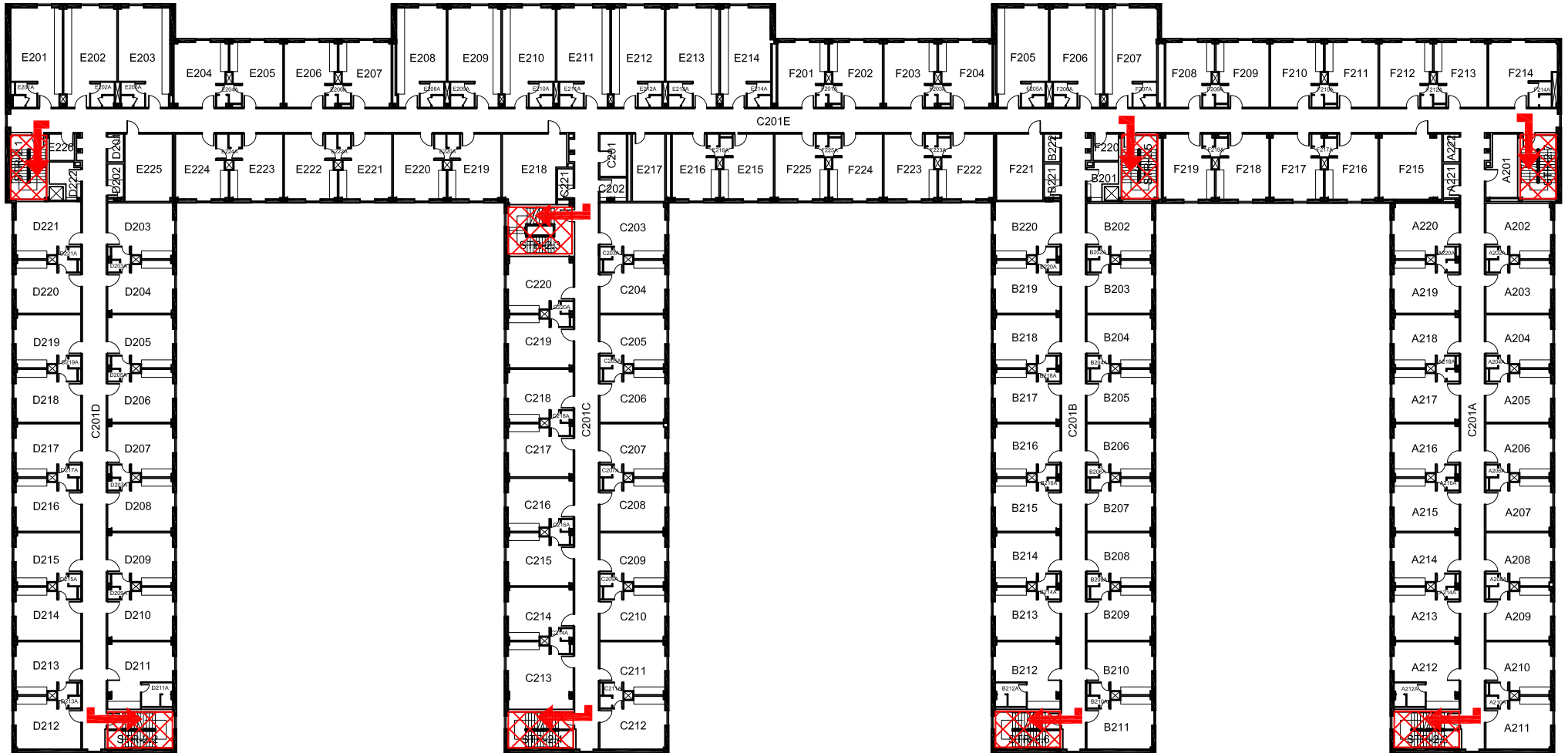
Safety Legend

-  Areas of Refuge
-  Tornado Shelter Areas
-  Exit/Evacuation Routes
- In case of fire, do not use elevator*
-  Automatic External Defibrillator

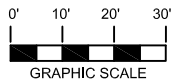
MAPLE STREET HALL

BLDG #0182
04-2019


Exterior Gross Area
40441





SECOND FLOOR PLAN



Safety Legend

 Areas of Refuge

 Tornado Shelter Areas

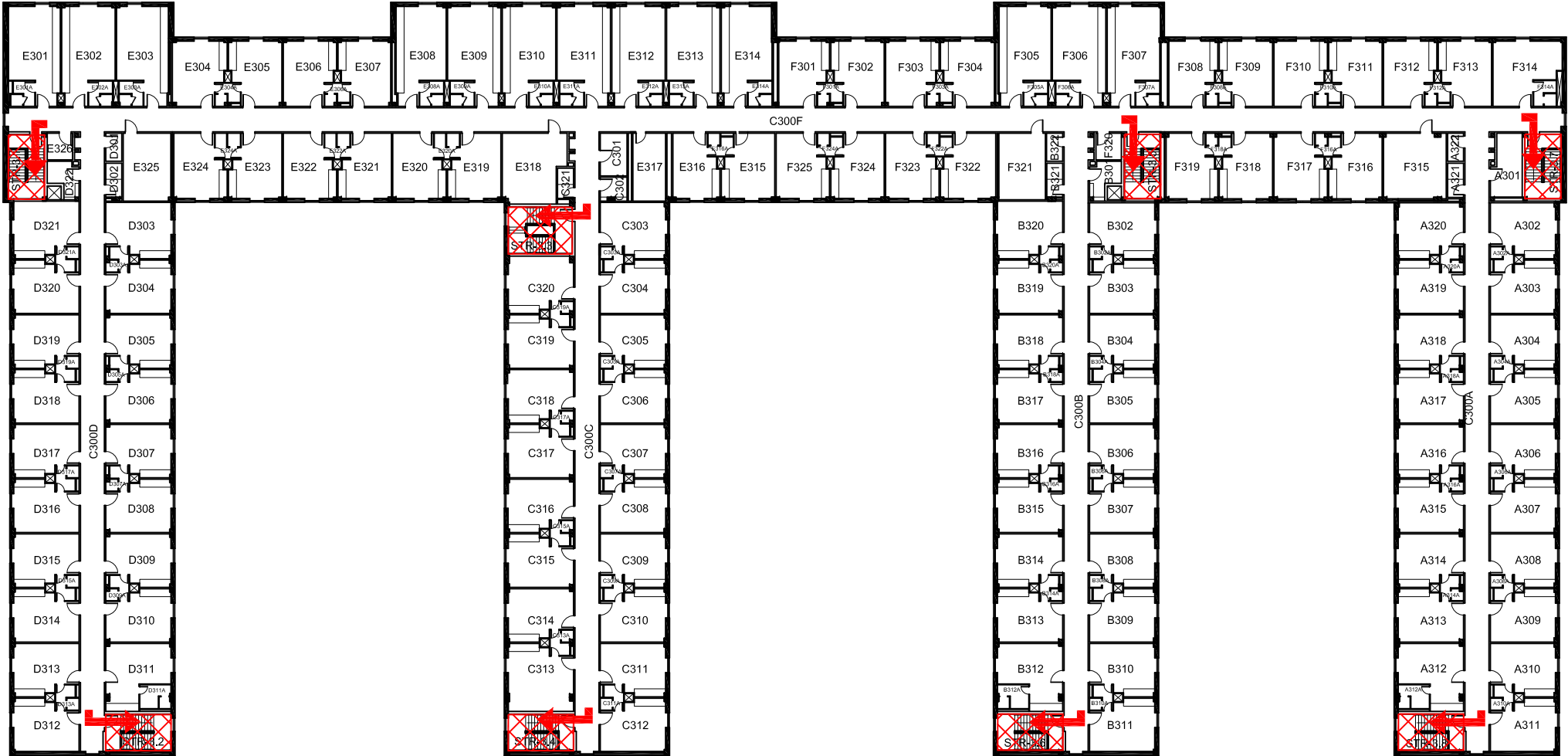
 Exit/Evacuation Routes
In case of fire, do not use elevator

 Automatic External Defibrillator

MAPLE STREET HALL

BLDG #0182
04-2019

Exterior Gross Area
40441



THIRD FLOOR PLAN

