

Emergency Evacuation Procedures

Library Annex Building

941 Precision Dr. Denton, TX 76207

Severe Weather

In the event of severe weather, all building occupants should immediately seek shelter in the designated shelter-in-place area in the building. If unable to safely move to the designated shelter-in-place area, seek shelter in a windowless interior room or hallway on the lowest floor of the building.

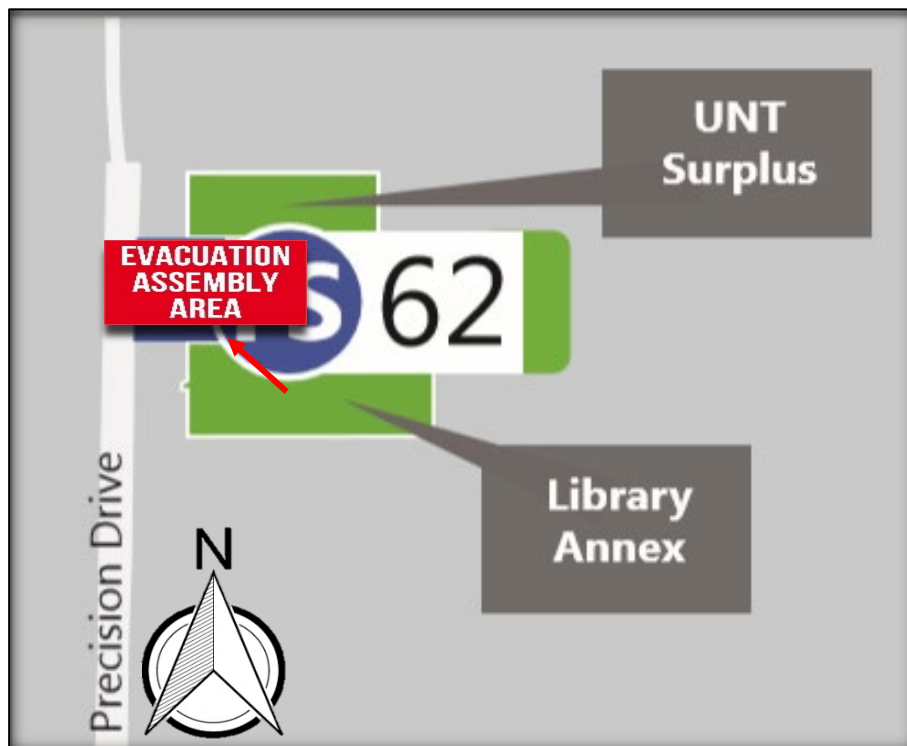
All building occupants should take shelter in room C128 or the north side hallway past room 130. Avoid standing near windows, walls and doors made of glass.

Bomb Threat/Fire

In the event of a bomb threat or fire in the building, all building occupants should immediately evacuate the building using the nearest exit. Once outside, proceed to the designated assembly area. If unable to safely move to the designated assembly area, contact one or more members of your department or unit to let them know you are safe and inform them of your whereabouts.

Persons with mobility impairments who are unable to safely exit the building should move to a designated area of refuge and await assistance from emergency responders.

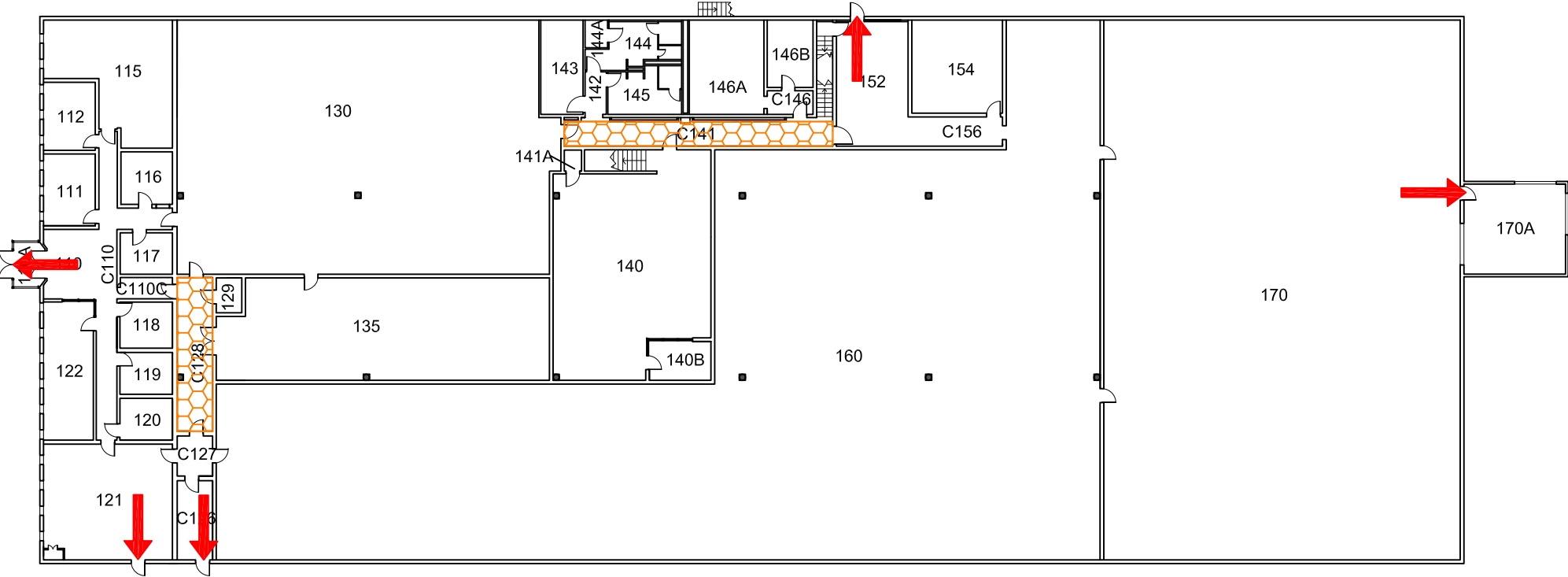
All building occupants should immediately evacuate the building and proceed to parking lot 62 between the Library Annex and the Surplus Warehouse.



LIBRARY ANNEX BUILDING

BUILDING # 0170
12-2008

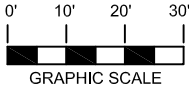
Exterior Gross Area
37068





N



FIRST FLOOR PLAN



Safety Legend

-  Tornado Shelter Areas
 -  Exit/Evacuation Routes
- In case of fire, do not use elevator*