

# Emergency Evacuation Procedures

## Language Building

108 Avenue A Denton, TX, 76201

### Severe Weather

In the event of severe weather, all building occupants should immediately seek shelter in the designated shelter-in-place area in the building. If unable to safely move to the designated shelter-in-place area, seek shelter in a windowless interior room or hallway on the lowest floor of the building.

**All building occupants should take shelter in the interior hallways and restrooms on the lowest floor including room 113 and the second floor interior hallway. Avoid standing near windows, walls and doors made of glass.**

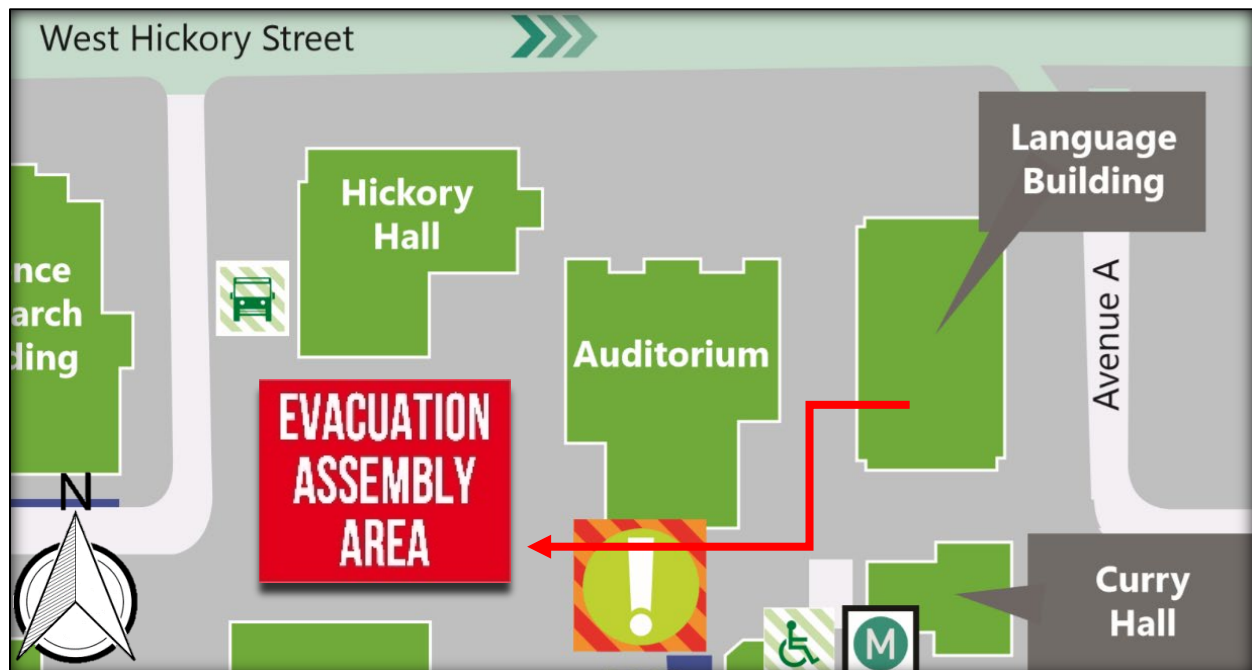
---

### Bomb Threat/Fire

In the event of a bomb threat or fire in the building, all building occupants should immediately evacuate the building using the nearest exit. Once outside, proceed to the designated assembly area. If unable to safely move to the designated assembly area, contact one or more members of your department or unit to let them know you are safe and inform them of your whereabouts.

Persons with mobility impairments who are unable to safely exit the building should move to a designated area of refuge and await assistance from emergency responders.

**All building occupants should immediately evacuate the building and proceed to the lawn south of Hickory Hall.**

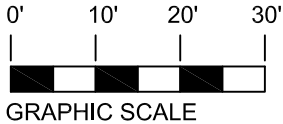


# LANGUAGE BUILDING

BUILDING #0148

11-2016

Exterior Gross Area  
16751



## FIRST FLOOR PLAN

### Safety Legend



Areas of Refuge



Tornado Shelter Areas



Exit/Evacuation Routes

*In case of fire, do not use elevator*



Automatic External Defibrillator



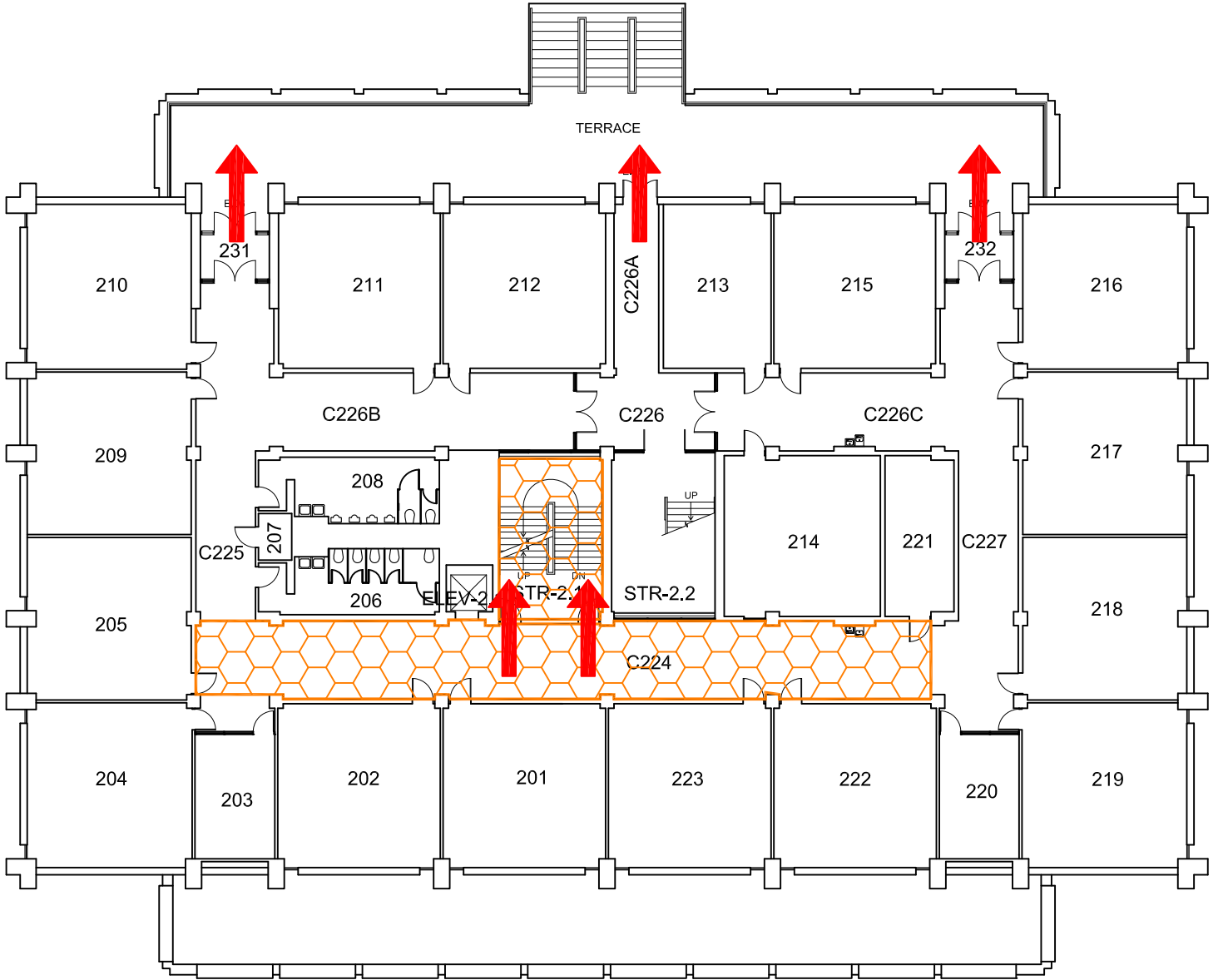
Evacuation Chair

# LANGUAGE BUILDING

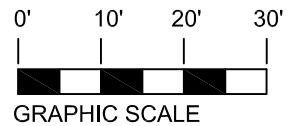
BUILDING #0148

11-2016






Exterior Gross Area  
16641



## SECOND FLOOR PLAN



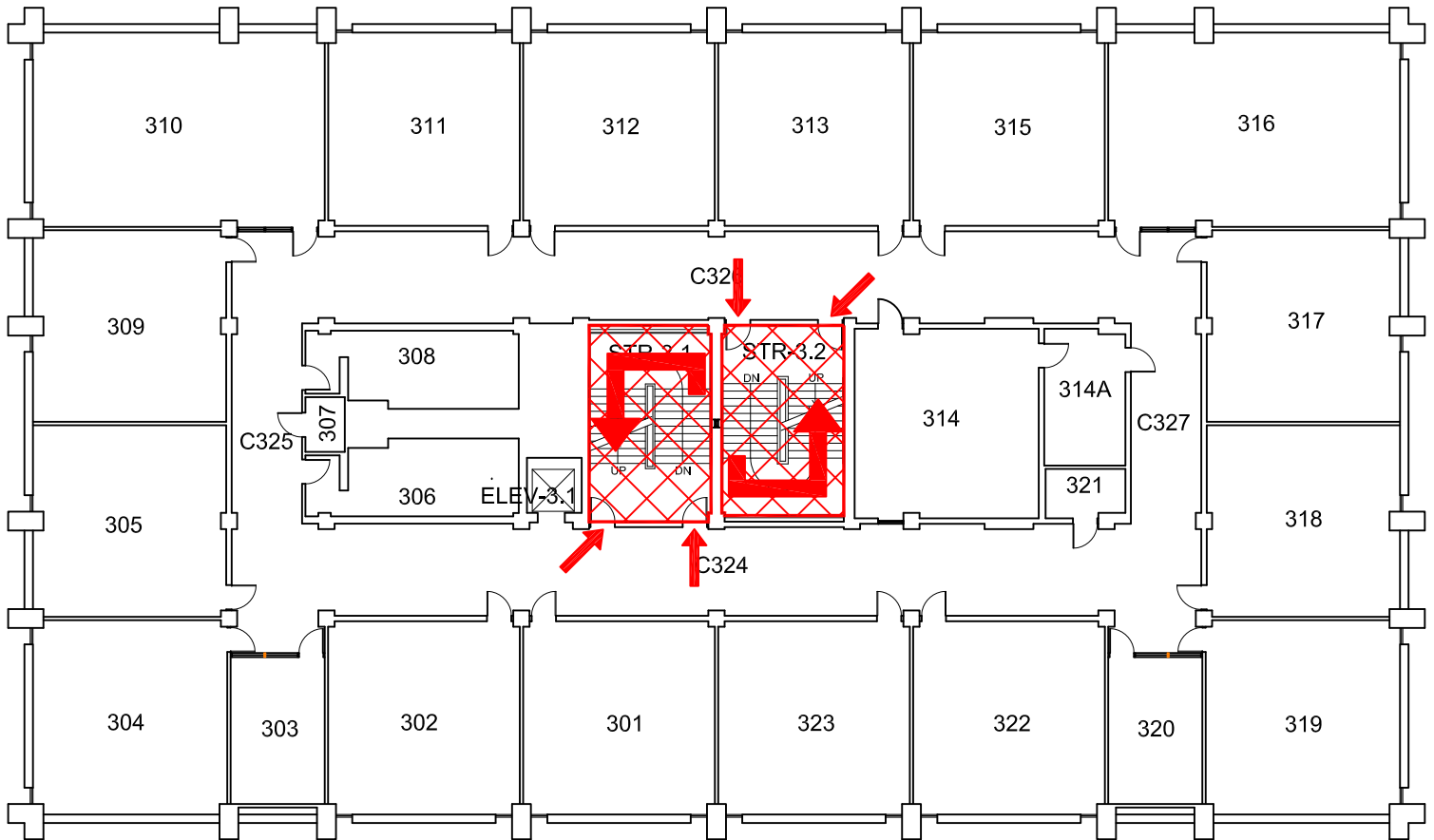
### Safety Legend

-  Areas of Refuge
-  Tornado Shelter Areas
-  Exit/Evacuation Routes  
*In case of fire, do not use elevator*
-  Automatic External Defibrillator
-  Evacuation Chair

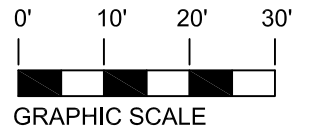
# LANGUAGE BUILDING

BUILDING #0148  
11-2016

Exterior Gross Area  
16780



## THIRD FLOOR PLAN



### Safety Legend



Areas of Refuge



Tornado Shelter Areas



Exit/Evacuation Routes

*In case of fire, do not use elevator*



Automatic External Defibrillator

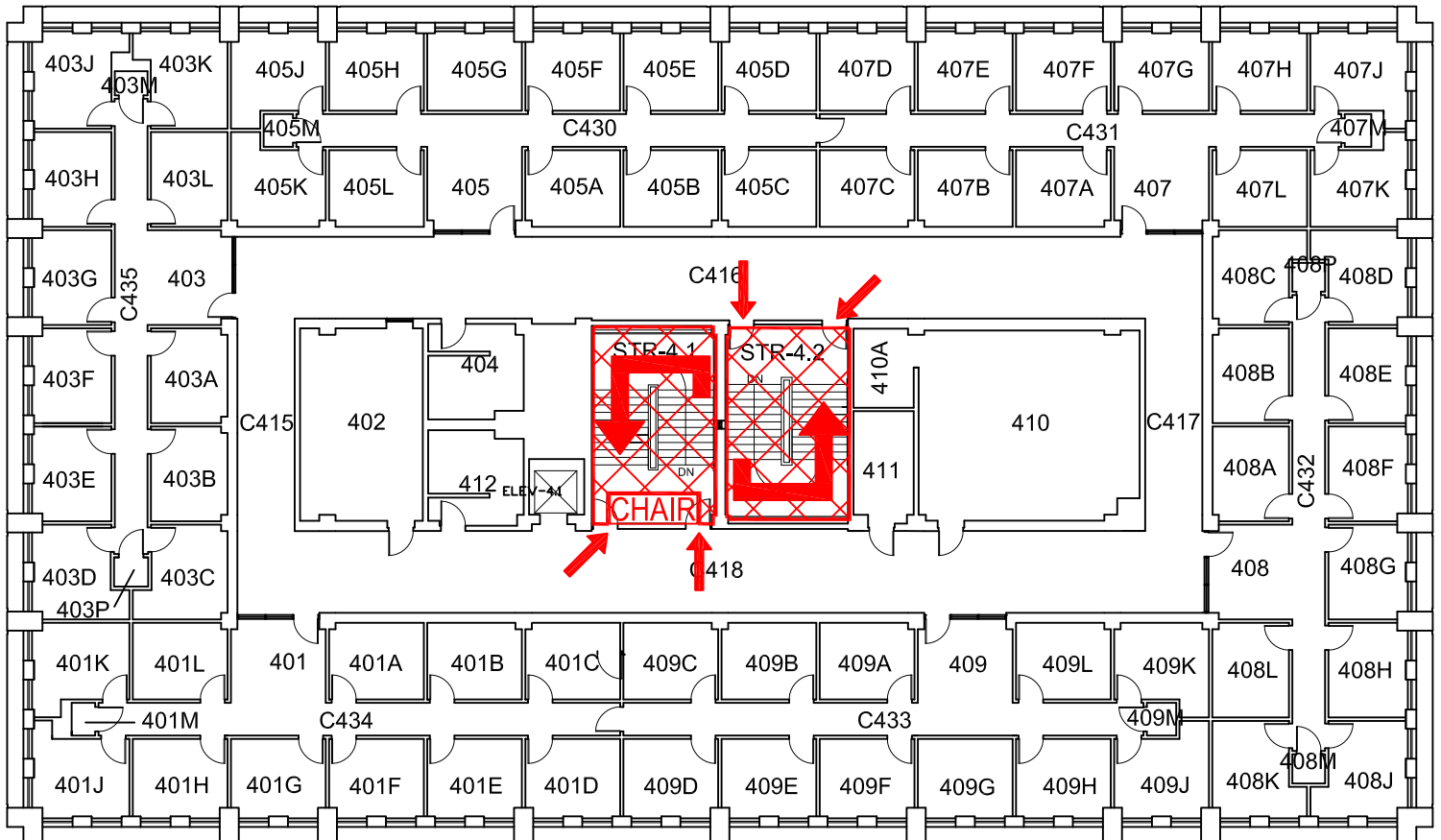


Evacuation Chair

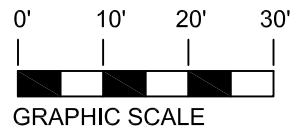
# LANGUAGE BUILDING

BUILDING #0148  
11-2016

Exterior Gross Area  
16780



## FOURTH FLOOR PLAN



### Safety Legend



Areas of Refuge



Tornado Shelter Areas



Exit/Evacuation Routes

*In case of fire, do not use elevator*



Automatic External Defibrillator



Evacuation Chair