

# Emergency Evacuation Procedures

## Honors Hall

1716 Eagle Drive, Denton, TX 76201

### Severe Weather

In the event of severe weather, all building occupants should immediately seek shelter in the designated shelter-in-place area in the building. If unable to safely move to the designated shelter-in-place area, seek shelter in a windowless interior room or hallway on the lowest floor of the building.

**All building occupants should take shelter in the interior hallways of the lowest level of their respective wing. Avoid standing near windows, walls and doors made of glass.**

---

### Bomb Threat/Fire

In the event of a bomb threat or fire in the building, all building occupants should immediately evacuate the building using the nearest exit. Once outside, proceed to the designated assembly area. If unable to safely move to the designated assembly area, contact your RA to let them know you are safe and inform them of your whereabouts.

Persons with mobility impairments who are unable to safely exit the building should move to a designated area of refuge and await assistance from emergency responders.

**All building occupants should immediately evacuate the building and proceed to the open area east of Gateway Center Building.**

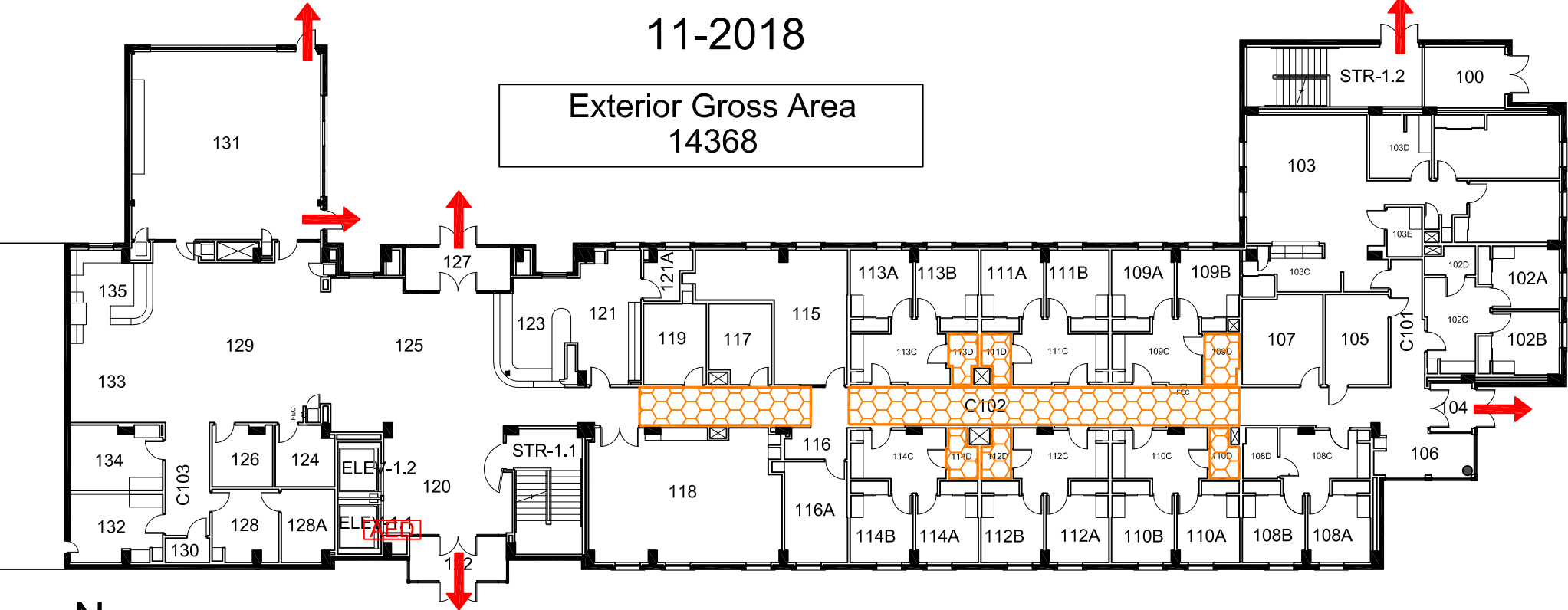


# HONORS HALL

BLDG # 0171

11-2018

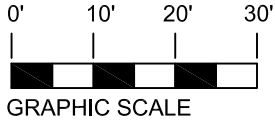
Exterior Gross Area  
14368



N

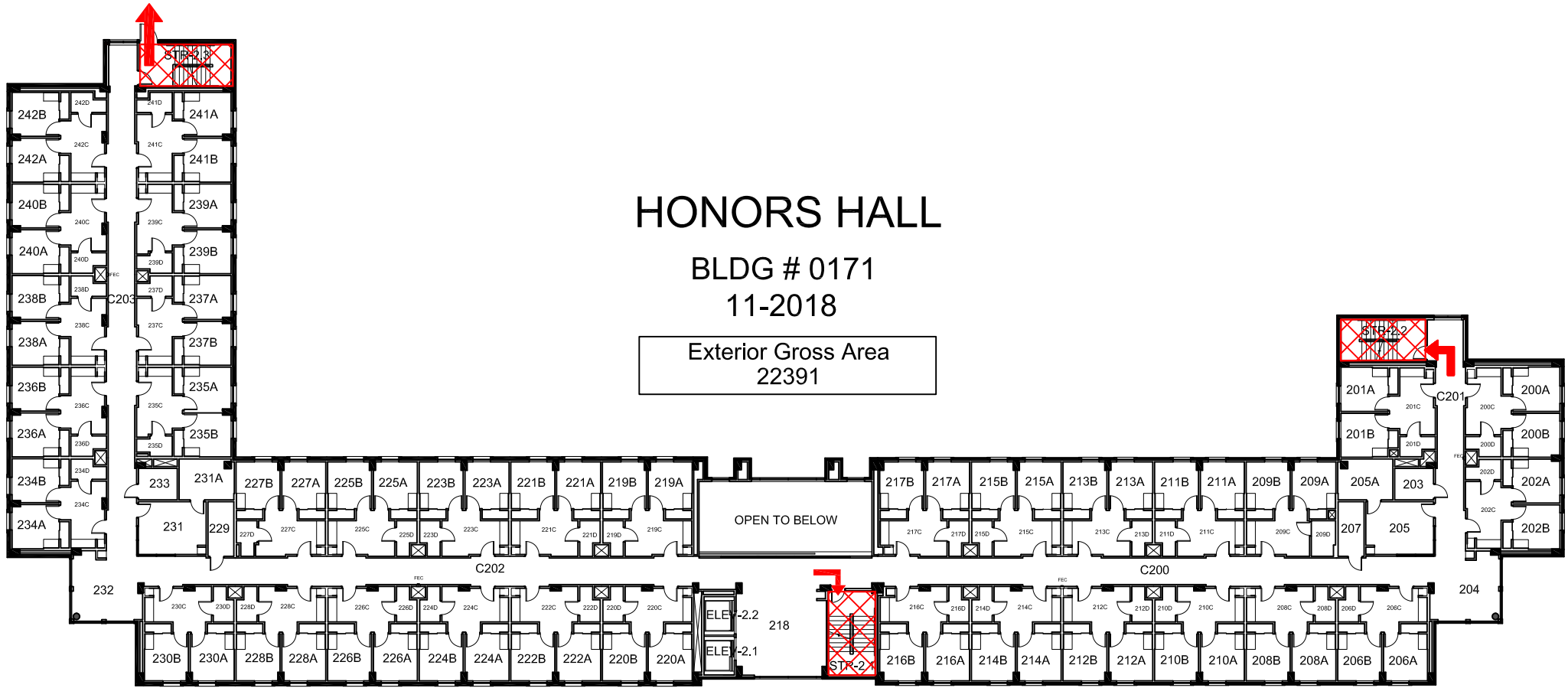


## FIRST FLOOR PLAN



### Safety Legend

- Tornado Shelter Areas
- Exit/Evacuation Routes
- In case of fire, do not use elevator*
- Automatic External Defibrillator



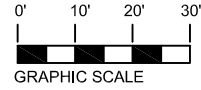
# HONORS HALL





BLDG # 0171  
11-2018

Exterior Gross Area  
22391



## SECOND FLOOR PLAN



- Safety Legend**
-  Areas of Refuge
  -  Tornado Shelter Areas
  -  Exit/Evacuation Routes
  - In case of fire, do not use elevator*
  -  Automatic External Defibrillator

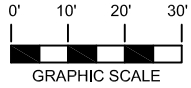
# HONORS HALL

BLDG # 0171  
11-2018




Exterior Gross Area  
23189

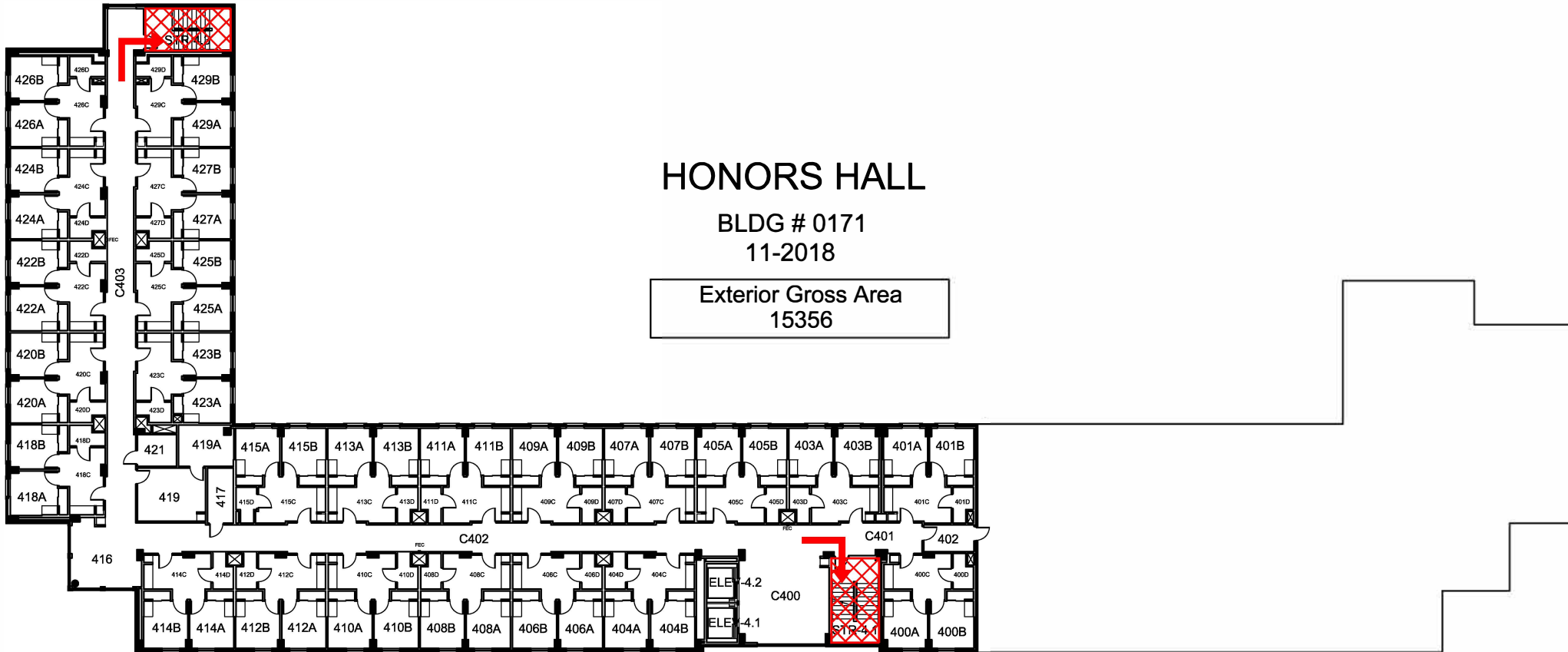


## THIRD FLOOR PLAN



### Safety Legend

-  Areas of Refuge
-  Exit/Evacuation Routes
- In case of fire, do not use elevator*
-  Automatic External Defibrillator



# HONORS HALL

BLDG # 0171

11-2018




Exterior Gross Area  
15356



**FOURTH FLOOR PLAN**



**Safety Legend**

-  Areas of Refuge
-  Exit/Evacuation Routes
- In case of fire, do not use elevator*
-  Automatic External Defibrillator