

Emergency Evacuation Procedures

Hickory Hall

1417 W. Hickory St. Denton, TX 76201

Severe Weather

In the event of severe weather, all building occupants should immediately seek shelter in the designated shelter-in-place area in the building. If unable to safely move to the designated shelter-in-place area, seek shelter in a windowless interior room or hallway on the lowest floor of the building.

All building occupants should take shelter in the interior hallways on the first floor of the building. Avoid standing near windows, walls and doors made of glass.

Bomb Threat/Fire

In the event of a bomb threat or fire in the building, all building occupants should immediately evacuate the building using the nearest exit. Once outside, proceed to the designated assembly area. If unable to safely move to the designated assembly area, contact one or more members of your department or unit to let them know you are safe and inform them of your whereabouts.

Persons with mobility impairments who are unable to safely exit the building should move to a designated area of refuge and await assistance from emergency responders.

All building occupants should immediately evacuate the building and proceed to the lawn on the south side of the building.

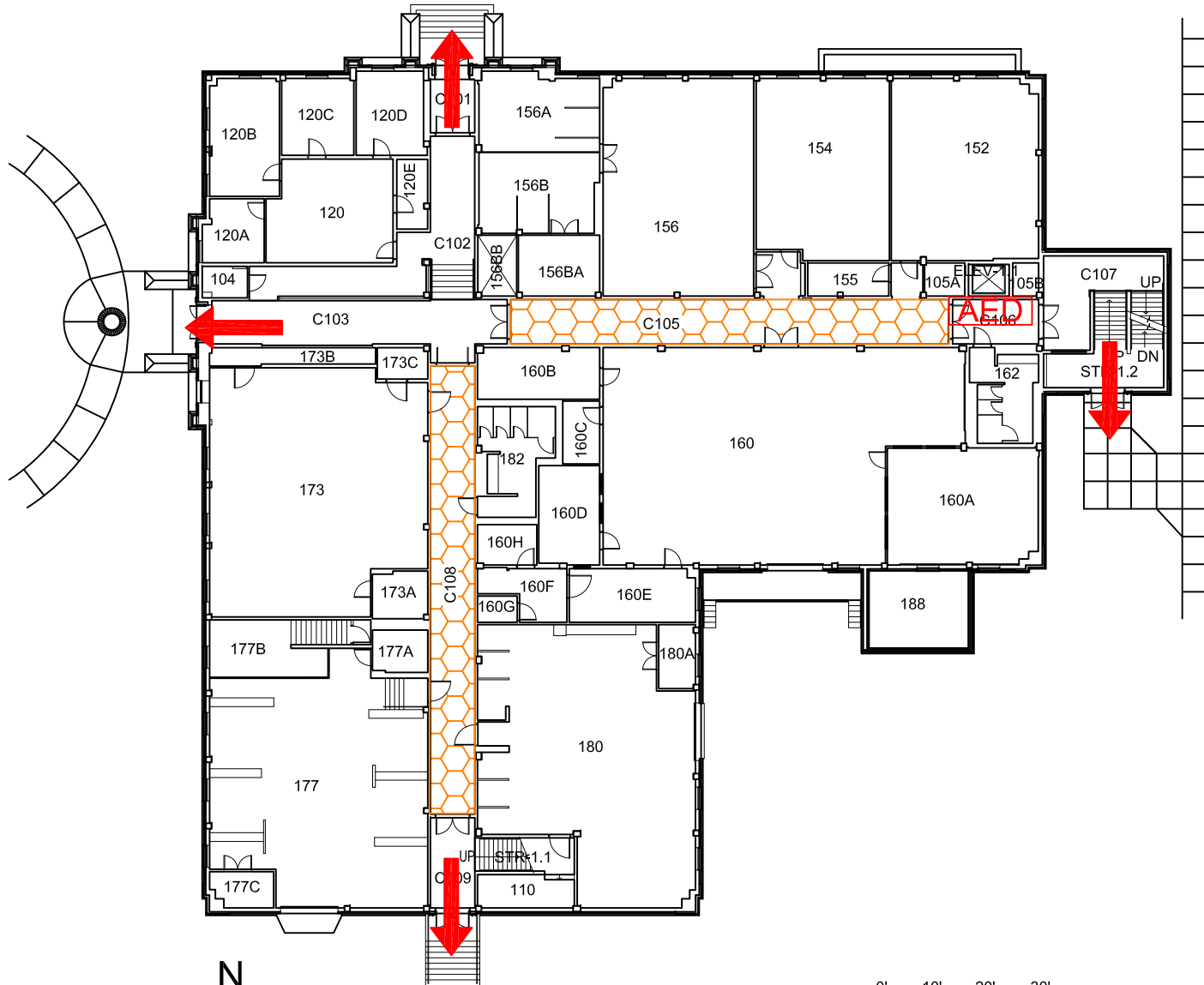


HICKORY HALL

BLDG # 0109




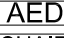

09-2016

Exterior Gross Area
20213



FIRST FLOOR PLAN

Safety Legend

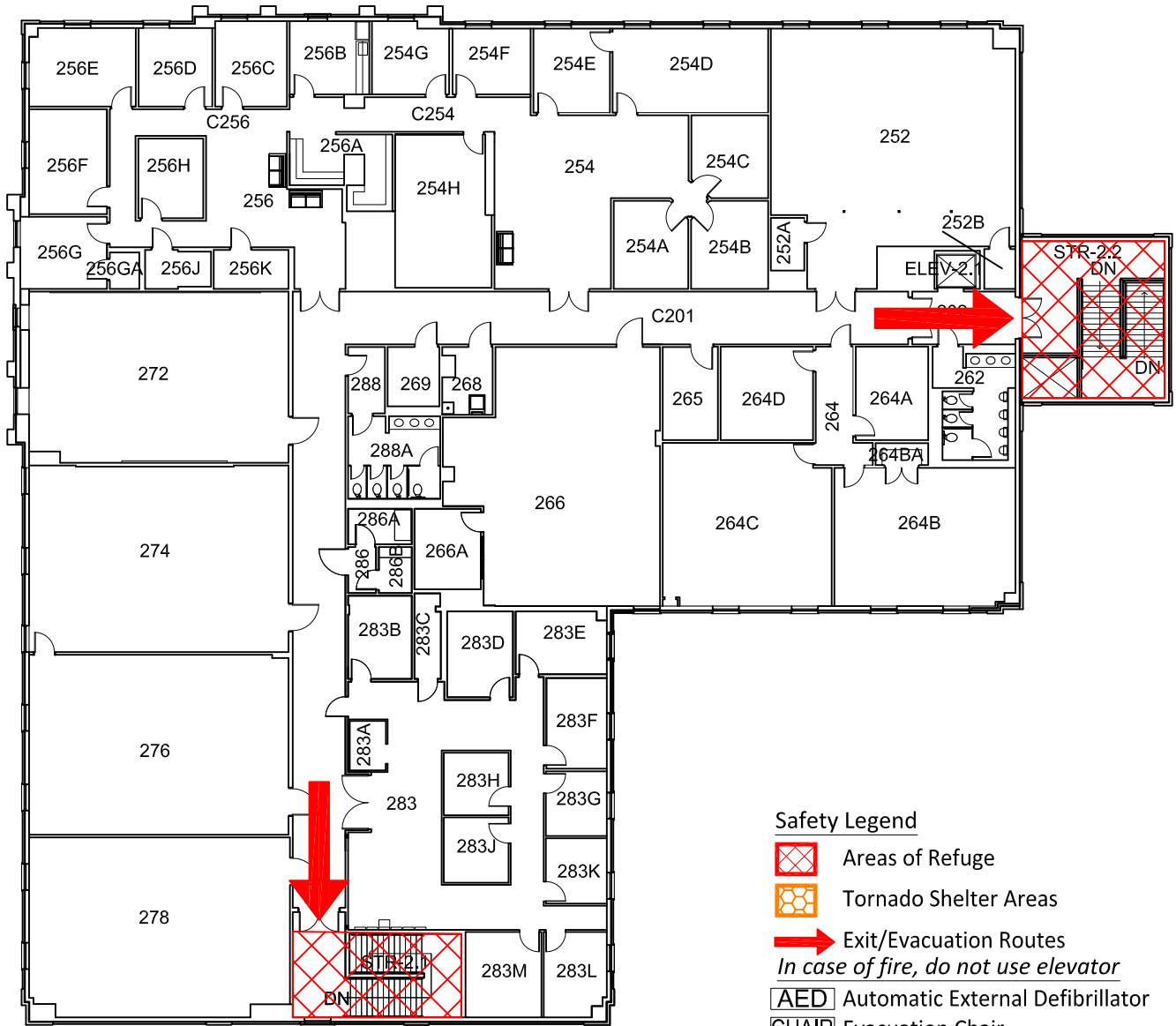
-  Areas of Refuge
-  Tornado Shelter Areas
-  Exit/Evacuation Routes
In case of fire, do not use elevator
-  AED Automatic External Defibrillator
-  CHAIR Evacuation Chair

HICKORY HALL

BLDG # 0109

04-2018

Exterior Gross Area
19906



Safety Legend

- Areas of Refuge
- Tornado Shelter Areas
- Exit/Evacuation Routes
In case of fire, do not use elevator
- AED Automatic External Defibrillator
- CHAIR Evacuation Chair



SECOND FLOOR PLAN

