

Emergency Evacuation Procedures

General Academic Building

225 S. Avenue B. Denton, TX 76201

Severe Weather

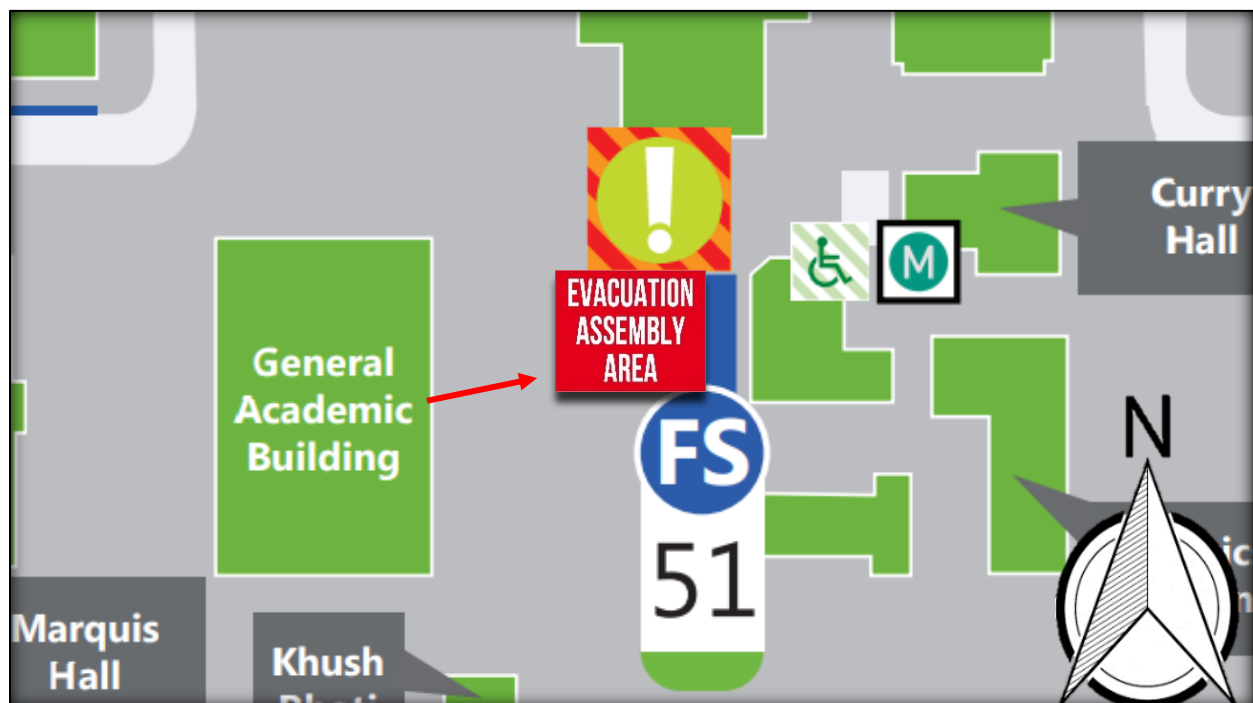
In the event of severe weather, all building occupants should immediately seek shelter in the designated shelter-in-place area in the building. If unable to safely move to the designated shelter-in-place area, seek shelter in a windowless interior room or hallway on the lowest floor of the building.

All building occupants should take shelter in the windowless hallways on the first floor of the building including the rooms 104, 105, 114, and restrooms on the first and second floor. Avoid standing near windows, doors and walls made of glass.

Bomb Threat/Fire

In the event of a bomb threat or fire in the building, all building occupants should immediately evacuate the building using the nearest exit. Once outside, proceed to the designated assembly area. If unable to safely move to the designated assembly area, contact one or more members of your department or unit to let them know you are safe and inform them of your whereabouts.

Persons with mobility impairments who are unable to safely exit the building should move to a designated area of refuge and await assistance from emergency responders. **All building occupants should immediately evacuate the building and proceed to the assembly area east of the building.**

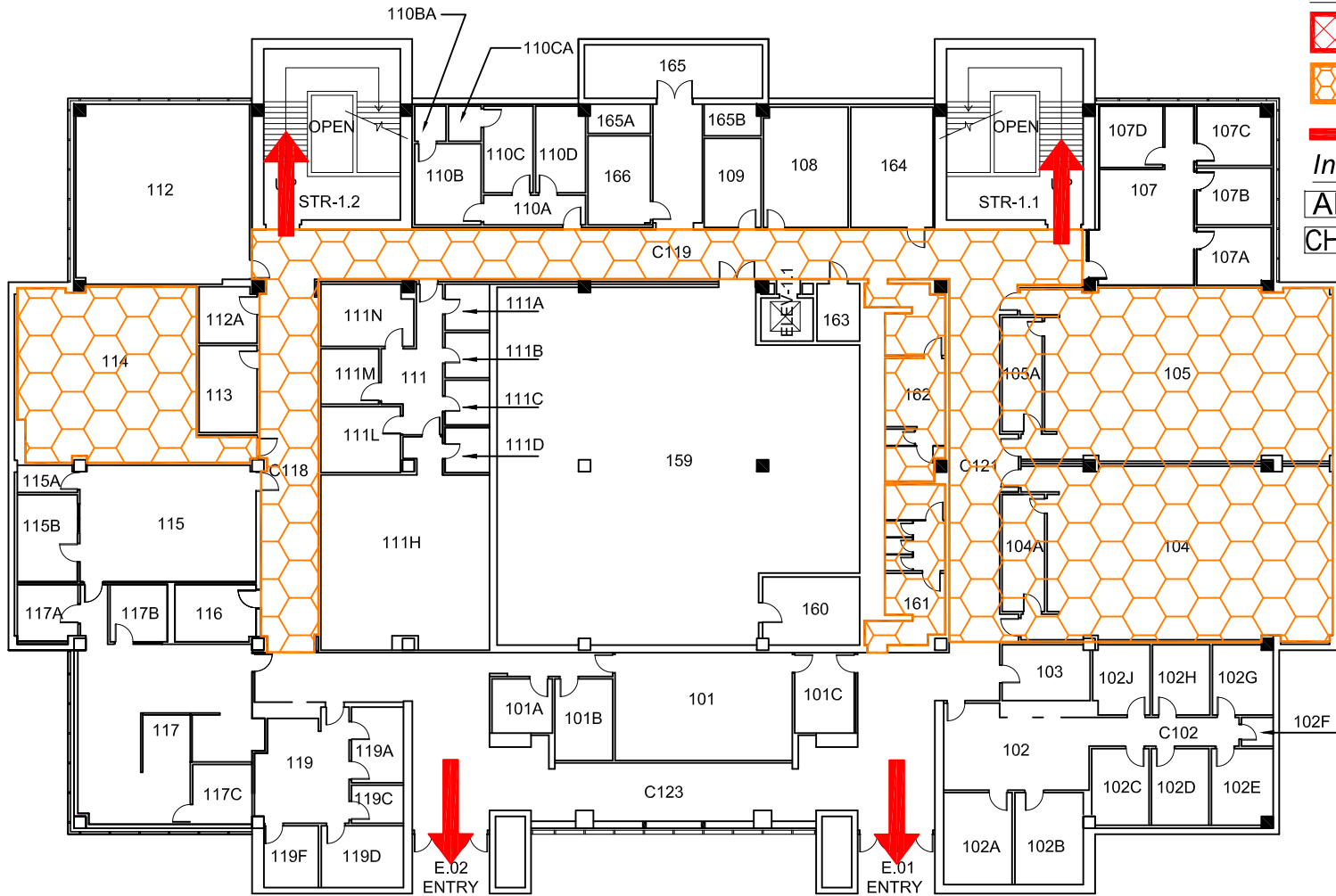


GENERAL ACADEMIC BUILDING






BLDG #0108

03-2019

Exterior Gross Area
28078

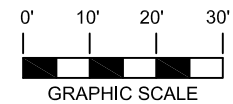


Safety Legend

-  Areas of Refuge
-  Tornado Shelter Areas
-  Exit/Evacuation Routes
In case of fire, do not use elevator
-  AED Automatic External Defibrillator
-  CHAIR Evacuation Chair



FIRST FLOOR PLAN








GENERAL ACADEMIC BUILDING

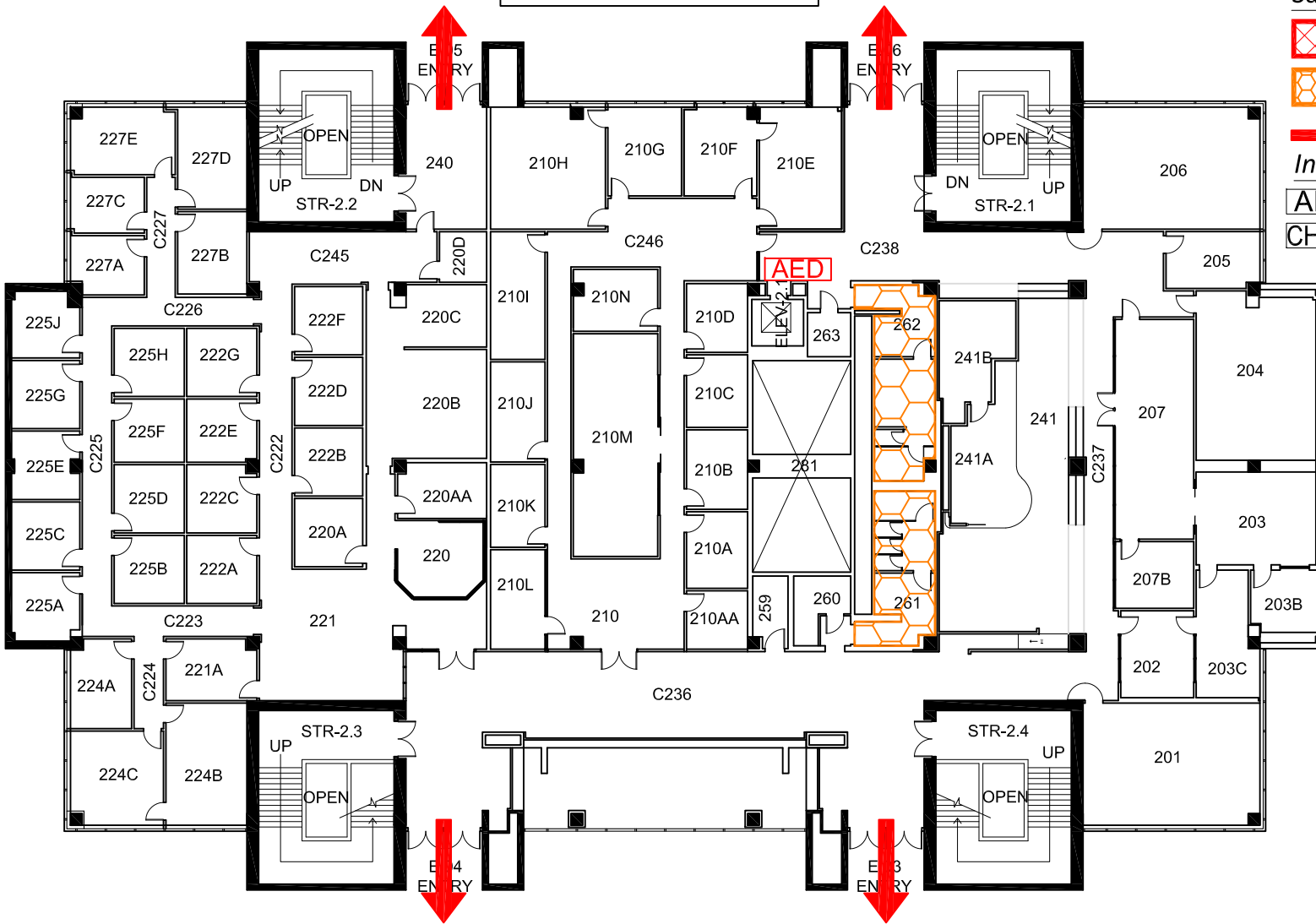
BLDG #0108

05-2016

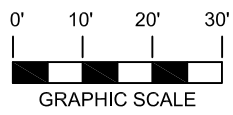
Exterior Gross Area
27184

Safety Legend

-  Areas of Refuge
-  Tornado Shelter Areas
-  Exit/Evacuation Routes
In case of fire, do not use elevator
-  AED Automatic External Defibrillator
-  CHAIR Evacuation Chair



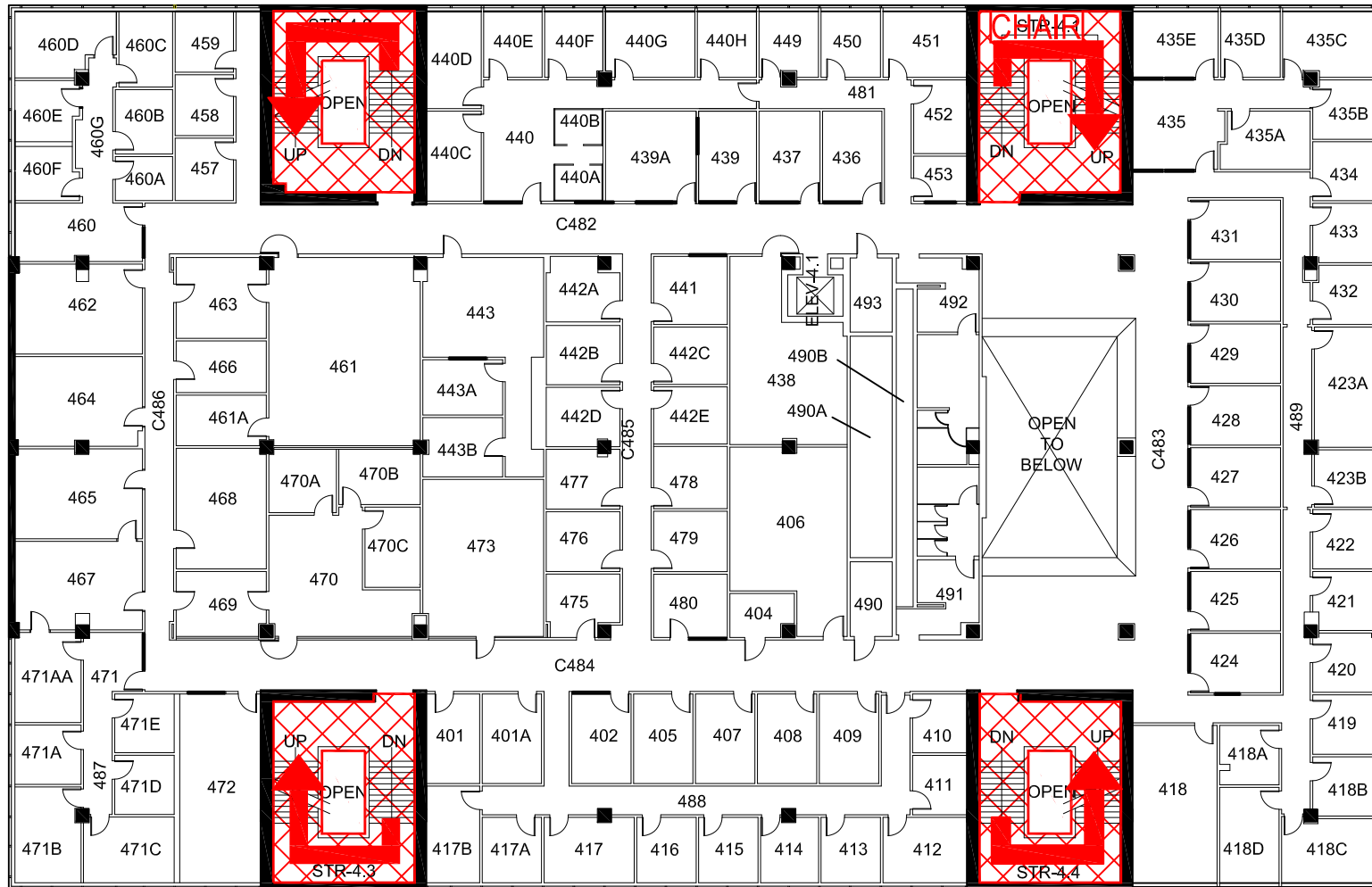
SECOND FLOOR PLAN





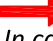


GENERAL ACADEMIC BUILDING

BLDG #0108
11-2018

Exterior Gross Area
31472



Safety Legend

-  Areas of Refuge
-  Tornado Shelter Areas
-  Exit/Evacuation Routes
- In case of fire, do not use elevator*
-  Automatic External Defibrillator
-  Evacuation Chair

N  **FOURTH FLOOR PLAN**

