

# Emergency Evacuation Procedures

## Gateway Center

801 North Texas Blvd. Denton, TX 76201

### Severe Weather

In the event of severe weather, all building occupants should immediately seek shelter in the designated shelter-in-place area in the building. If unable to safely move to the designated shelter-in-place area, seek shelter in a windowless interior room or hallway on the lowest floor of the building.

**All building occupants should take shelter in the interior windowless hallway on the north end of the Gateway Center as well as the first floor elevator space.**

**Alumni Center of Gateway: building occupants should shelter on the first floor within room 154 and 182, the kitchen space. Avoid standing near windows, walls and doors made of glass.**

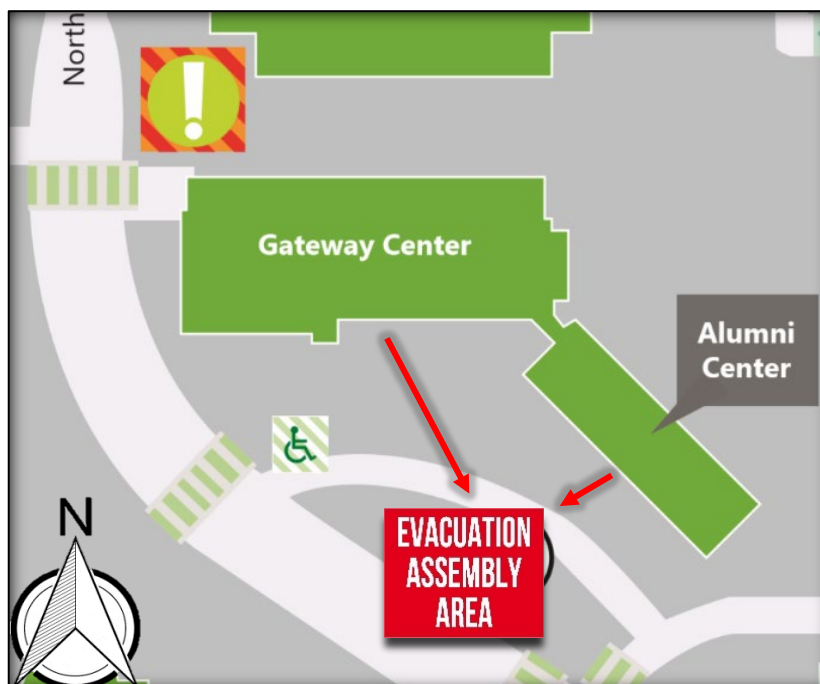
---

### Bomb Threat/Fire

In the event of a bomb threat or fire in the building, all building occupants should immediately evacuate the building using the nearest exit. Once outside, proceed to the designated assembly area. If unable to safely move to the designated assembly area, contact one or more members of your department or unit to let them know you are safe and inform them of your whereabouts.

Persons with mobility impairments who are unable to safely exit the building should move to a designated area of refuge and await assistance from emergency responders.

**All building occupants should immediately evacuate the building and proceed to the grassy lawn across the Gateway Center.**

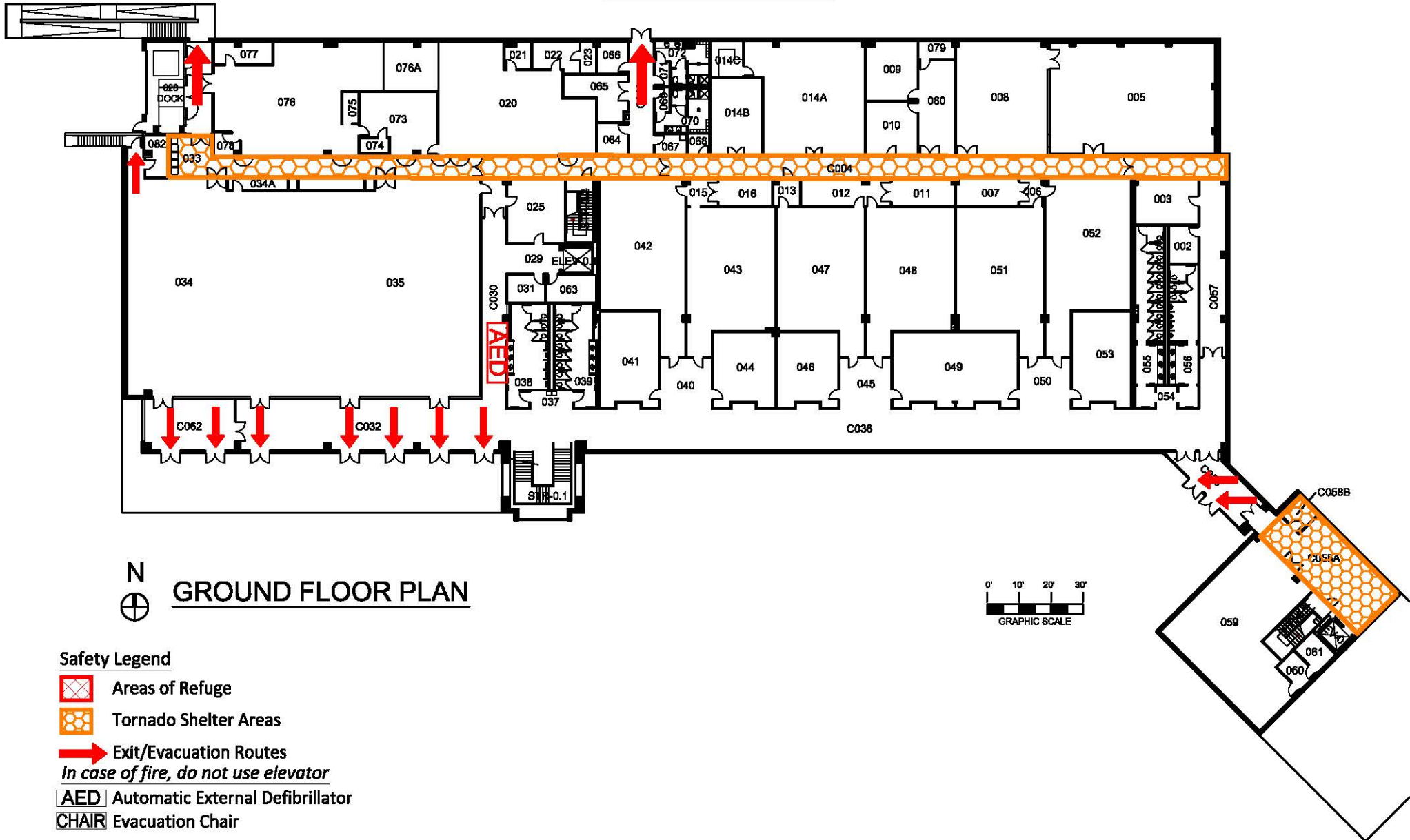


# GATEWAY CENTER

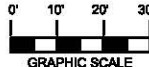
BLDG # 0161






10-2011

Exterior Gross Area  
48191



N  
⊕ GROUND FLOOR PLAN

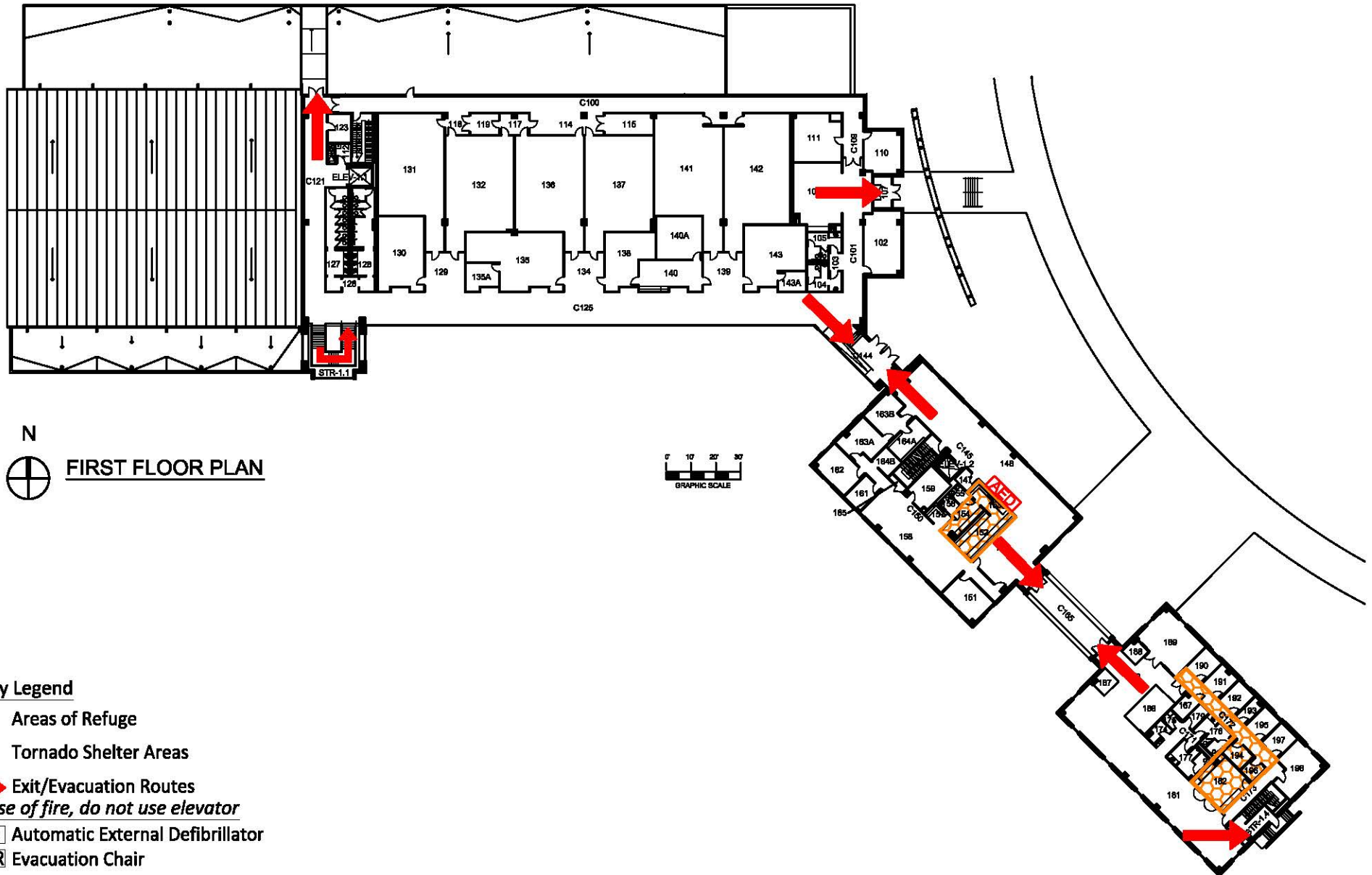


- Safety Legend**
-  Areas of Refuge
  -  Tornado Shelter Areas
  -  Exit/Evacuation Routes
  - In case of fire, do not use elevator*
  -  AED Automatic External Defibrillator
  -  CHAIR Evacuation Chair

# GATEWAY CENTER






BLDG # 0161  
08-2012

Exterior Gross Area  
35242



N  
FIRST FLOOR PLAN

0 10 20 30  
GRAPHIC SCALE

- Safety Legend**
-  Areas of Refuge
  -  Tornado Shelter Areas
  -  Exit/Evacuation Routes
  - In case of fire, do not use elevator*
  -  AED Automatic External Defibrillator
  -  CHAIR Evacuation Chair

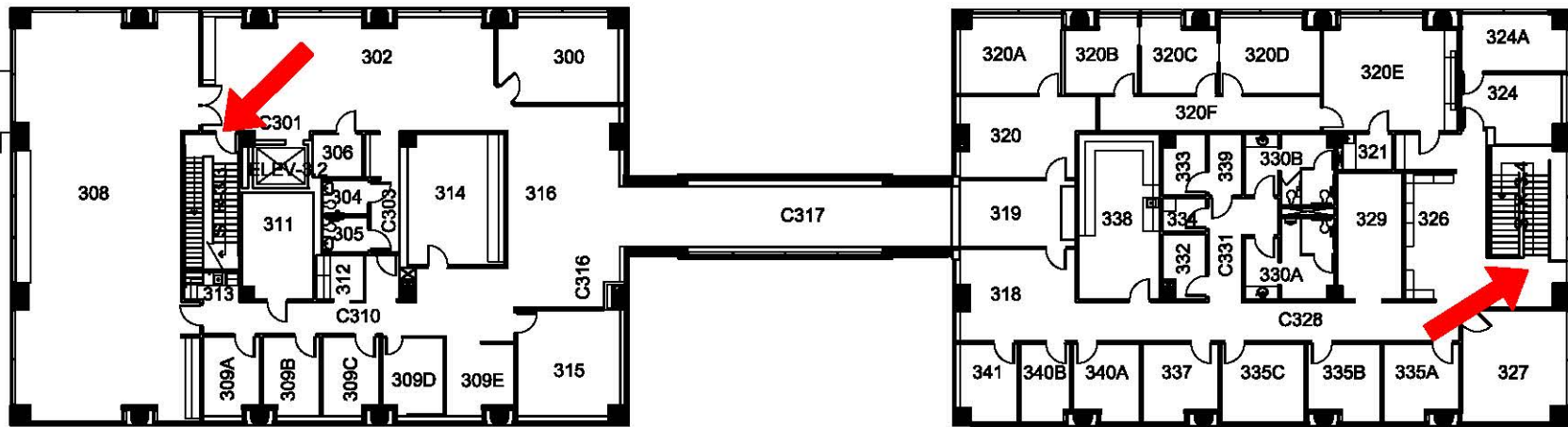


# GATEWAY CENTER

BLDG # 0161

01-2012

Exterior Gross Area  
12189



## THIRD FLOOR PLAN

### Safety Legend

 Areas of Refuge

 Tornado Shelter Areas

 Exit/Evacuation Routes

*In case of fire, do not use elevator*

**AED** Automatic External Defibrillator

**CHAIR** Evacuation Chair