

Emergency Evacuation Procedures

Frisco Campus

2811 Internet Blvd Suite 100, Frisco, TX 75034

Severe Weather

In the event of severe weather, all building occupants should immediately seek shelter in the designated shelter-in-place area in the building. If unable to safely move to the designated shelter-in-place area, seek shelter in a windowless interior room or hallway on the lowest floor of the building.

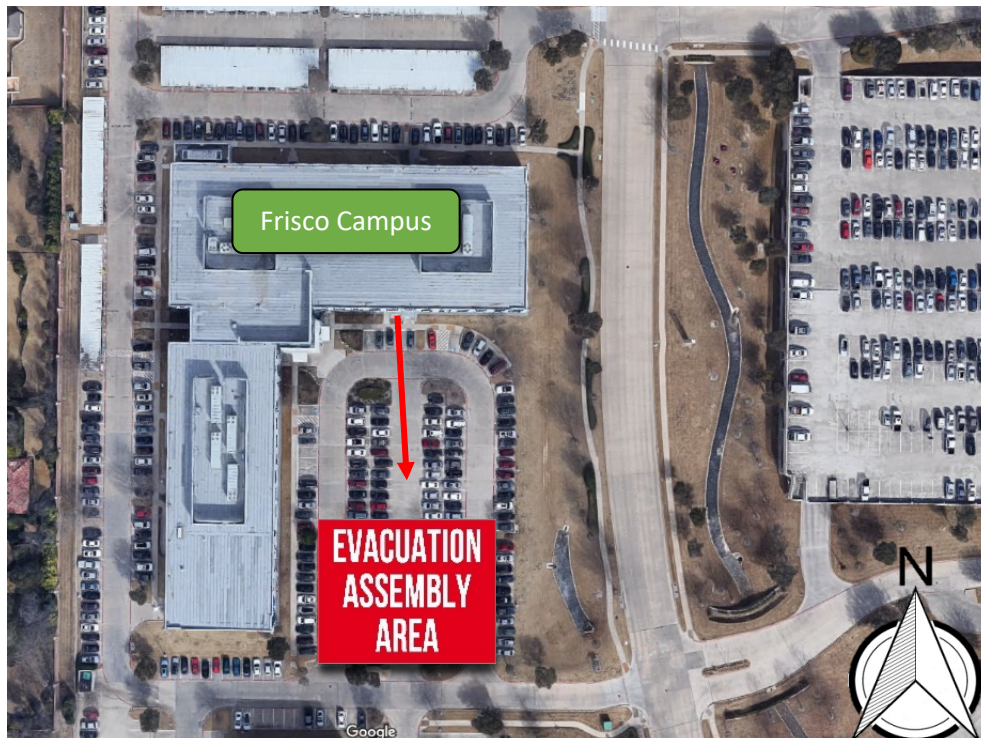
All building occupants should take shelter the interior hallways and restrooms on the lowest floor. Avoid standing near windows, walls and doors made of glass.

Bomb Threat/Fire

In the event of a bomb threat or fire in the building, all building occupants should immediately evacuate the building using the nearest exit. Once outside, proceed to the designated assembly area. If unable to safely move to the designated assembly area, contact one or more members of your department or unit to let them know you are safe and inform them of your whereabouts.

Persons with mobility impairments who are unable to safely exit the building should move to a designated area of refuge and await assistance from emergency responders.

All building occupants should immediately evacuate the building and proceed to the south side of the south parking lot.

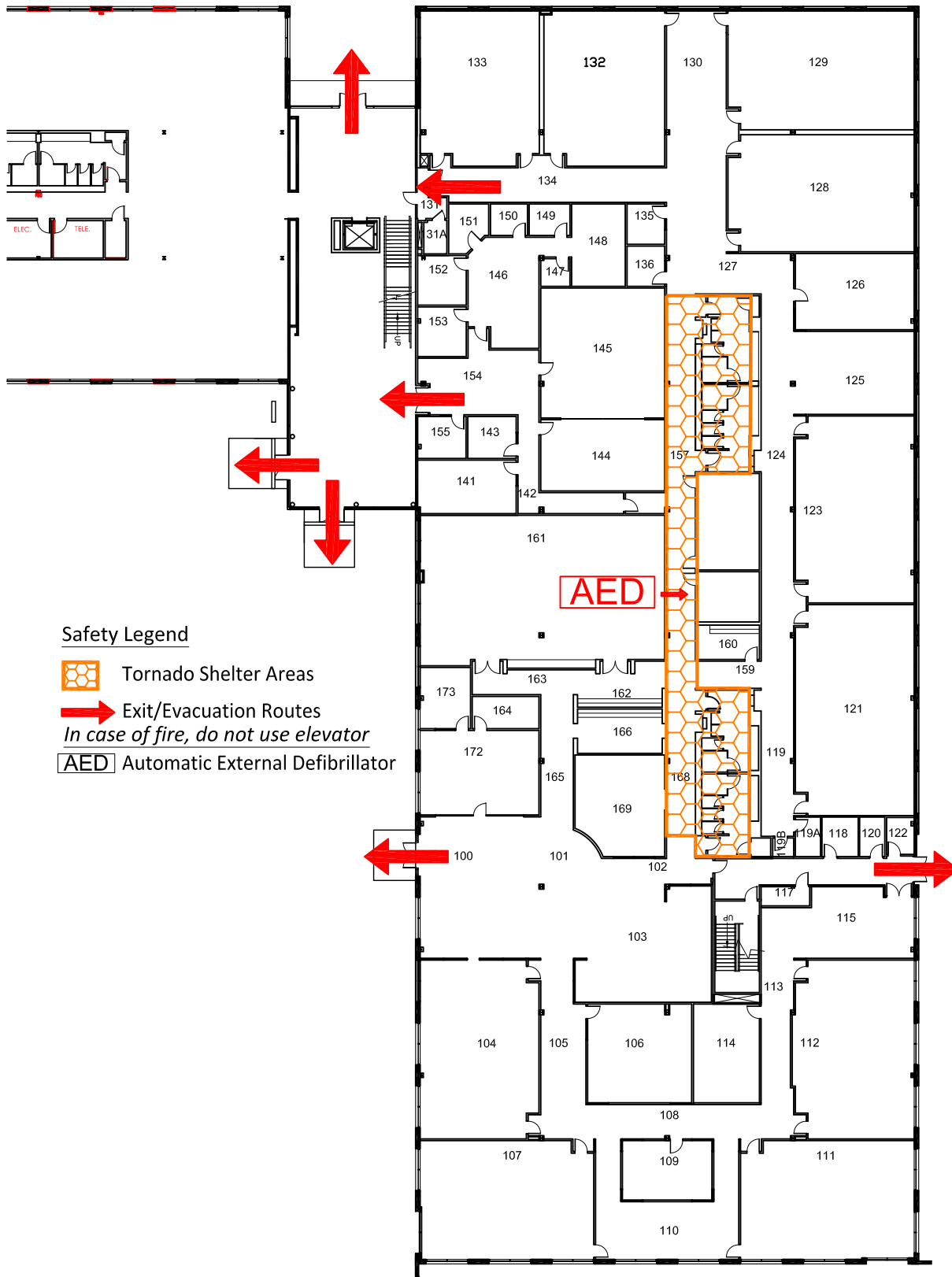


FRISCO CAMPUS BUILDING


BLDG # 5000


10-2015

Exterior Gross Area
35983



Safety Legend

 Tornado Shelter Areas

 Exit/Evacuation Routes
In case of fire, do not use elevator

 Automatic External Defibrillator

FIRST FLOOR PLAN

