

# Emergency Evacuation Procedures

## Field House

704 North Texas Blvd. Denton, TX 76201

### Severe Weather

In the event of severe weather, all building occupants should immediately seek shelter in the designated shelter-in-place area in the building. If unable to safely move to the designated shelter-in-place area, seek shelter in a windowless interior room or hallway on the lowest floor of the building.

**All building occupants should take shelter in the main shower room 116 in the center of the building. When occupancy exceeds 75, all occupants should seek shelter in the Coliseum across the street. Avoid standing near windows, walls and doors made of glass.**

---

### Bomb Threat/Fire

In the event of a bomb threat or fire in the building, all building occupants should immediately evacuate the building using the nearest exit. Once outside, proceed to the designated assembly area. If unable to safely move to the designated assembly area, contact one or more members of your department or unit to let them know you are safe and inform them of your whereabouts.

Persons with mobility impairments who are unable to safely exit the building should move to a designated area of refuge and await assistance from emergency responders.

**All building occupants should immediately evacuate the building and proceed to the east end of parking lot 20.**

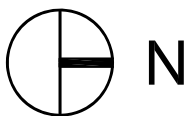
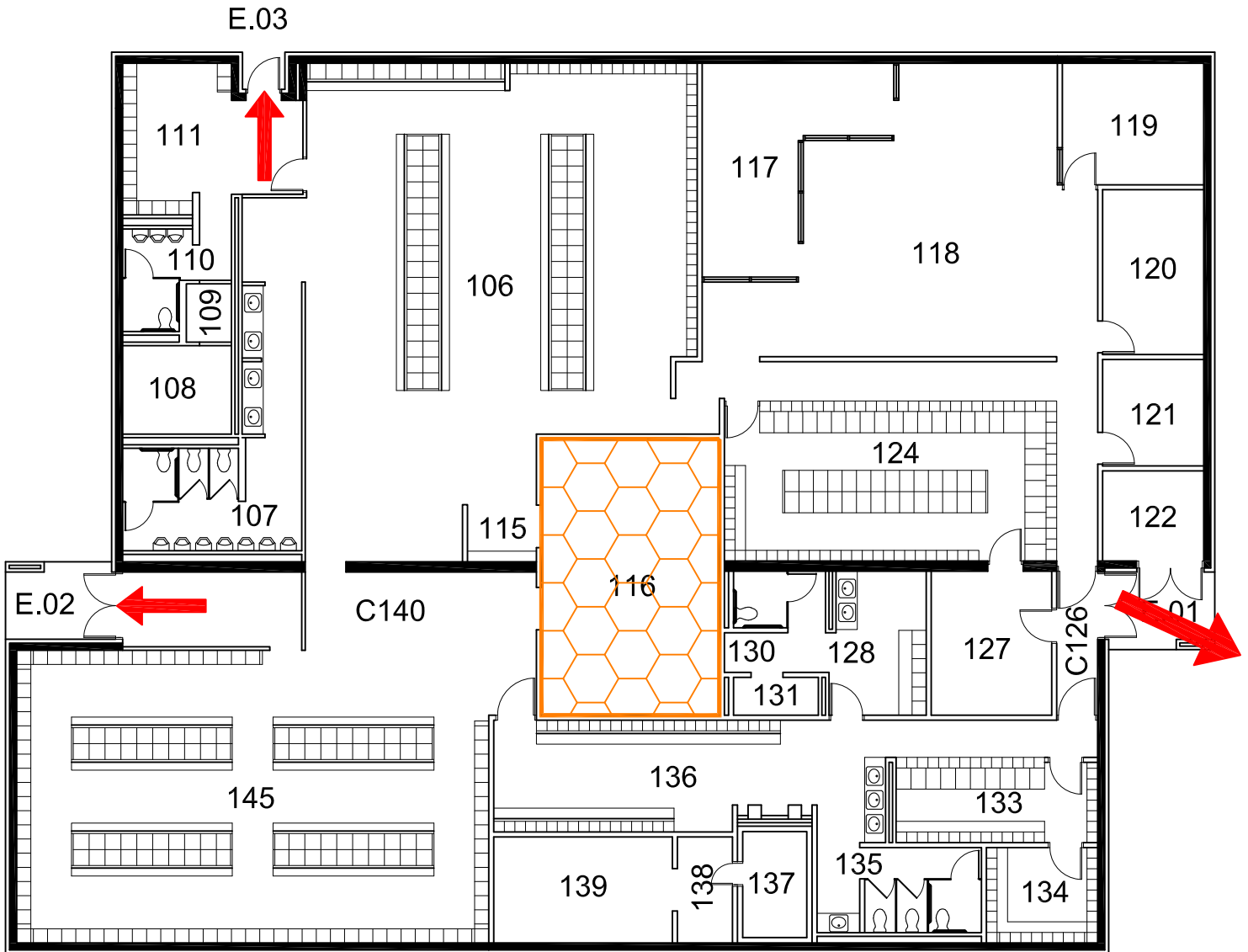


# FIELD HOUSE

BLDG #0308

02-2009

Exterior Gross Area  
8763



## FIRST FLOOR PLAN

### Safety Legend



Tornado Shelter Areas

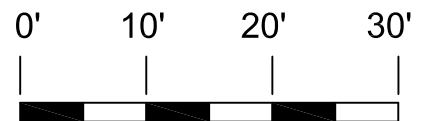


Exit/Evacuation Routes

*In case of fire, do not use elevator*



AED Automatic External Defibrillator



GRAPHIC SCALE