

# Emergency Evacuation Procedures

## Facilities Complex

2204 W. Prairie St., Denton, TX 76201

### Severe Weather

In the event of severe weather, all building occupants should immediately seek shelter in the designated shelter-in-place area in the building. If unable to safely move to the designated shelter-in-place area, seek shelter in a windowless interior room or hallway on the lowest floor of the building.

**All building occupants should take shelter in either:**

- Facilities Office Building in the interior hallway between rooms 150 and 158
- Facilities Services Building in the interior hallways between rooms 150-160 and 128-130

**Avoid standing near windows, walls and doors made of glass.**

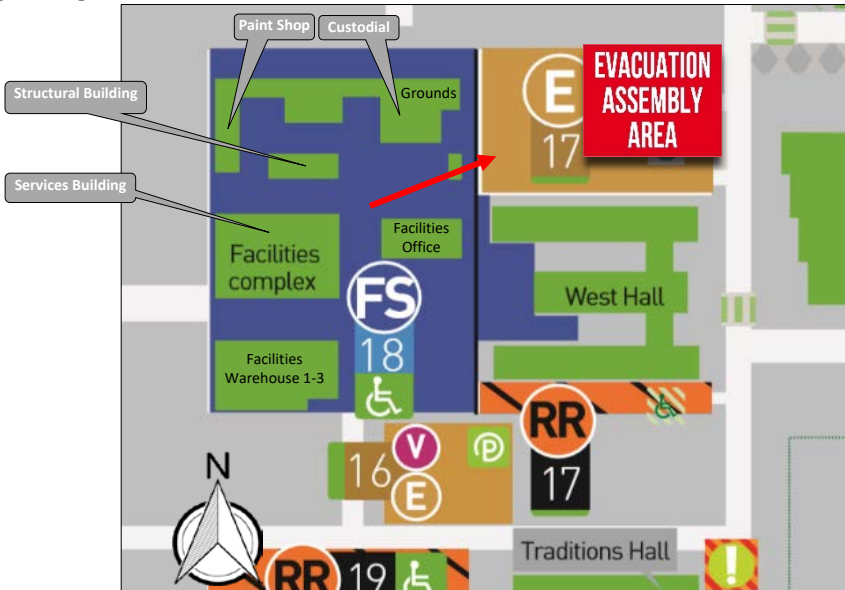
---

### Bomb Threat/Fire

In the event of a bomb threat or fire in the building, all building occupants should immediately evacuate the building using the nearest exit. Once outside, proceed to the designated assembly area. If unable to safely move to the designated assembly area, contact one or more members of your department or unit to let them know you are safe and inform them of your whereabouts.

Persons with mobility impairments who are unable to safely exit the building should move to a designated area of refuge and await assistance from emergency responders.

**All exits are clearly marked and all building occupants should immediately evacuate the building and proceed to parking lot 17 north West Hall.**








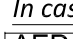

# FACILITIES OFFICE BLDG

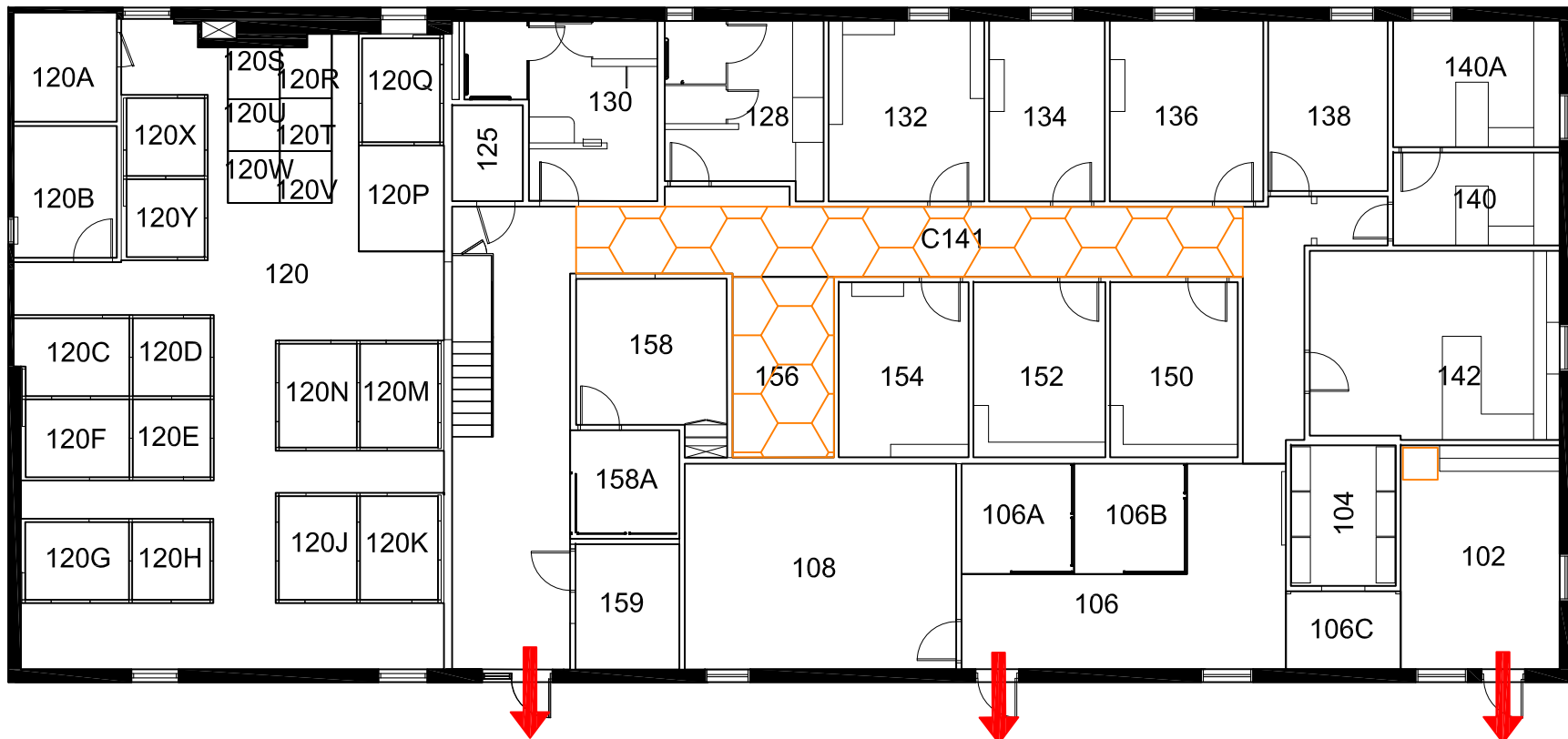
## BLDG #0501

### 03-2018

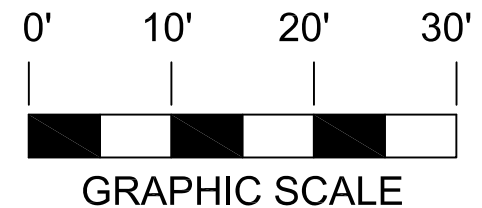
Exterior Gross Area  
6267

#### Safety Legend

-  Areas of Refuge
-  Tornado Shelter Areas
-  Exit/Evacuation Routes
- In case of fire, do not use elevator*
-  AED Automatic External Defibrillator
-  CHAIR Evacuation Chair



FIRST FLOOR PLAN



# FACILITIES OFFICE BLDG

BLDG #0501

03-2018

Exterior Gross Area  
1730

### Safety Legend



Areas of Refuge



Tornado Shelter Areas



Exit/Evacuation Routes

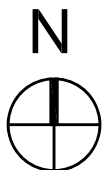
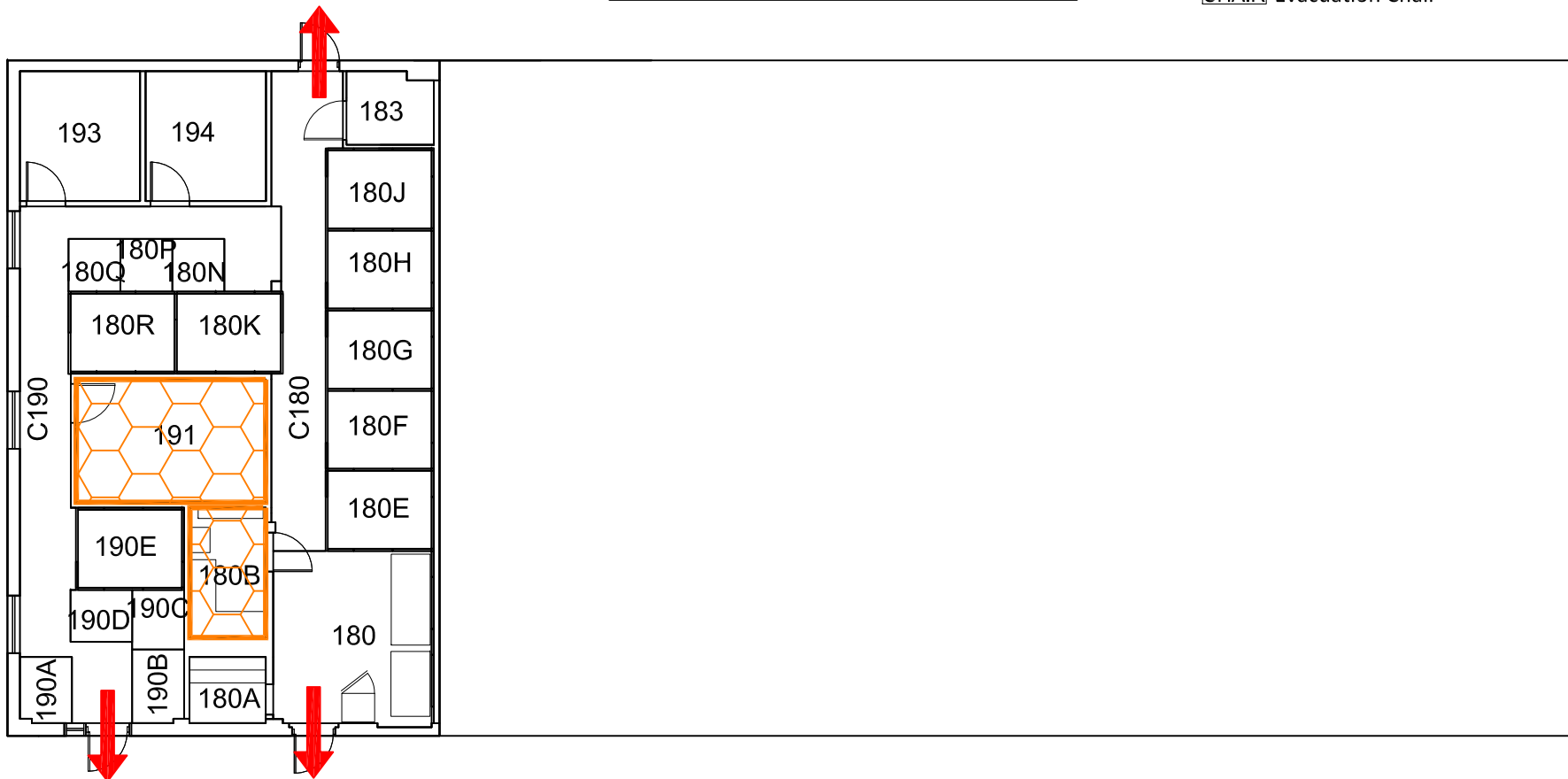
*In case of fire, do not use elevator*



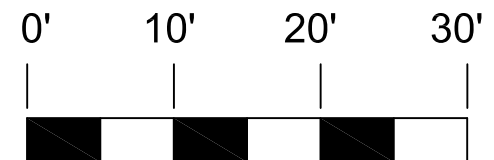
AED Automatic External Defibrillator



CHAIR Evacuation Chair








LOWER FLOOR PLAN



GRAPHIC SCALE

# FACILITIES GROUNDS BLDG

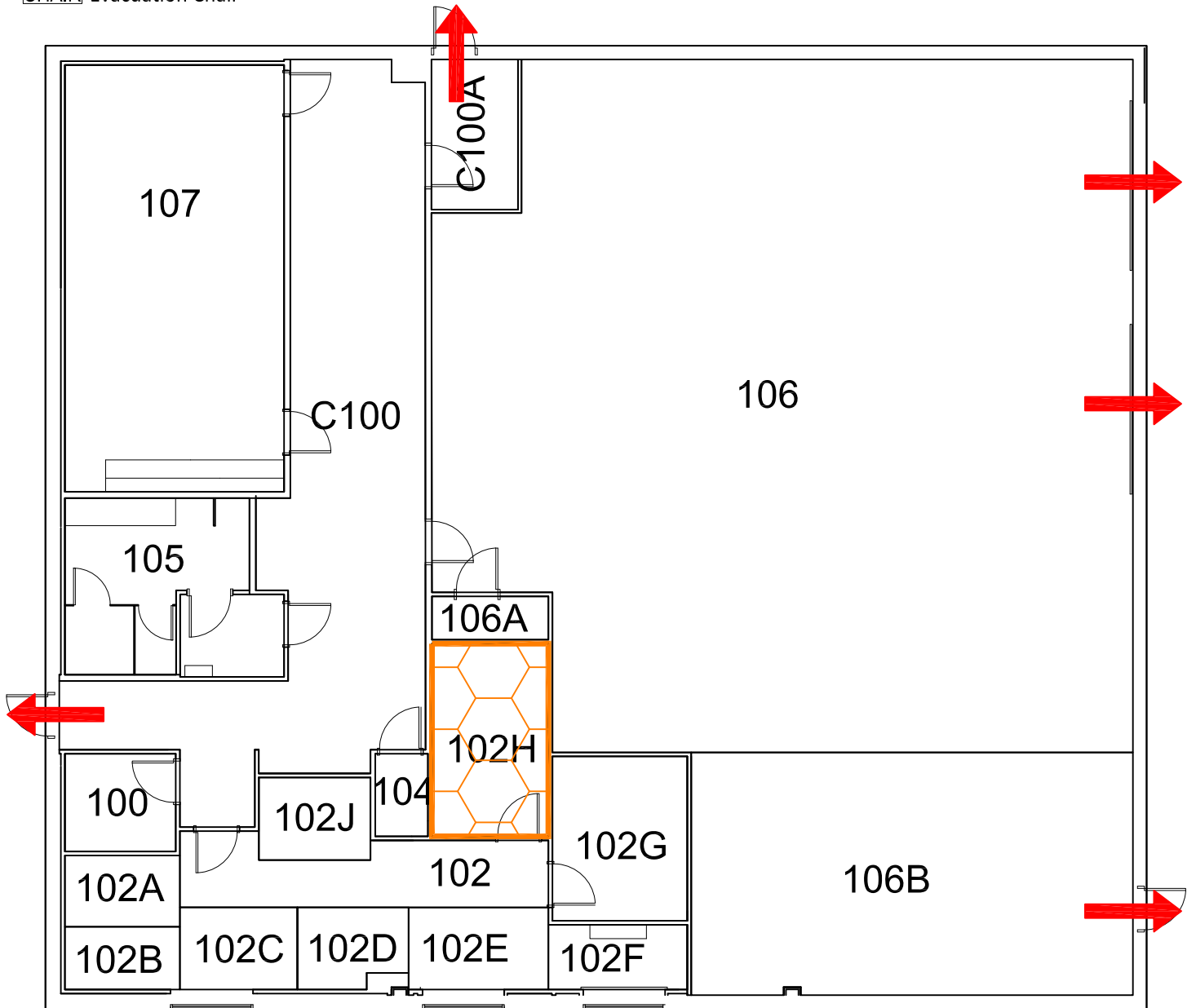
## Safety Legend

-  Areas of Refuge
-  Tornado Shelter Areas
-  Exit/Evacuation Routes  
*In case of fire, do not use elevator*
-  AED Automatic External Defibrillator
-  CHAIR Evacuation Chair

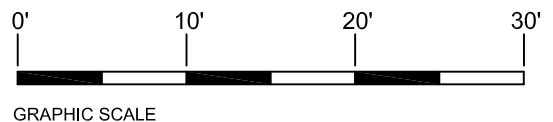
BLDG #0500

01-2018

Exterior Gross Area  
5600



N  
 **FIRST FLOOR PLAN**





# FACILITIES CUSTODIAL SERVICES


BLDG #0513

04-2019

## Safety Legend


 Areas of Refuge

 Tornado Shelter Areas

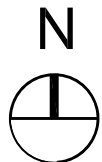
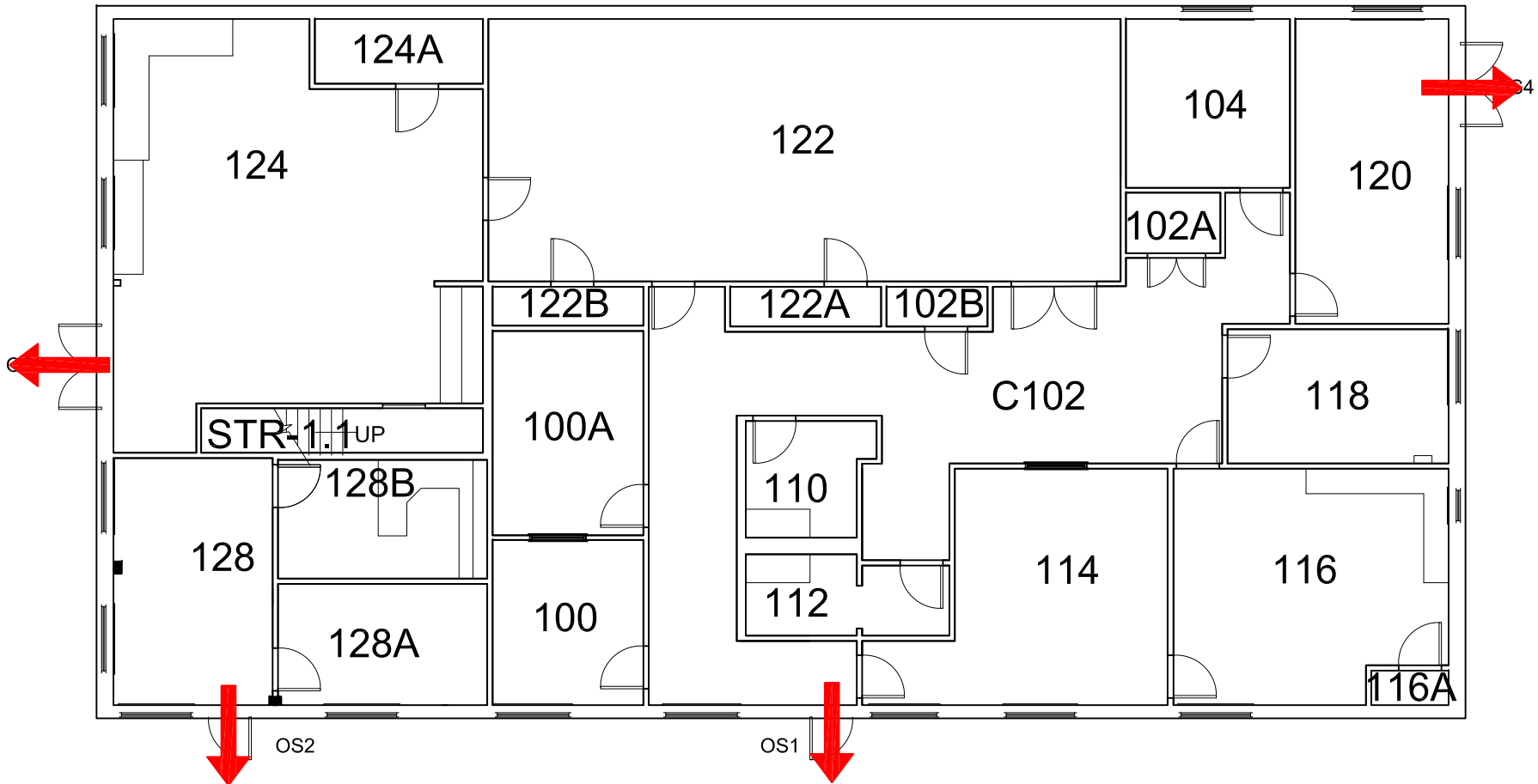
 Exit/Evacuation Routes

*In case of fire, do not use elevator*

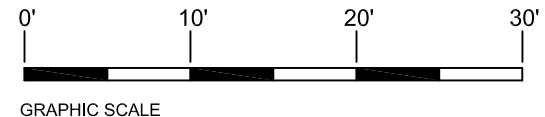
 AED Automatic External Defibrillator

 CHAIR Evacuation Chair

Exterior Gross Area  
4800



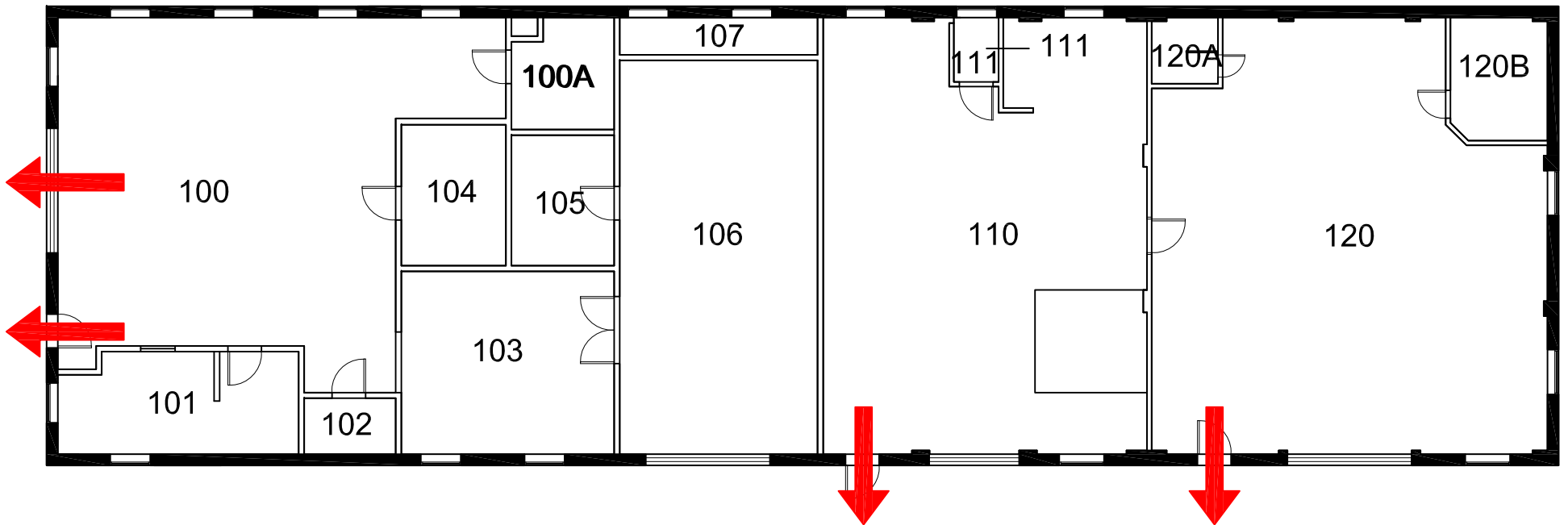
FIRST FLOOR PLAN



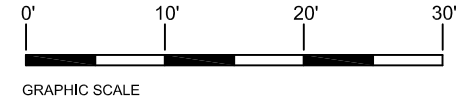
# FACILITIES PAINT SHOP

BLDG #0504  
06-2013



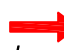
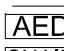

Exterior Gross Area  
5535



 N FIRST FLOOR PLAN



Safety Legend






-  Areas of Refuge
-  Tornado Shelter Areas
-  Exit/Evacuation Routes
- In case of fire, do not use elevator*
-  Automatic External Defibrillator
-  Evacuation Chair

# FACILITIES CARPENTER SHOP

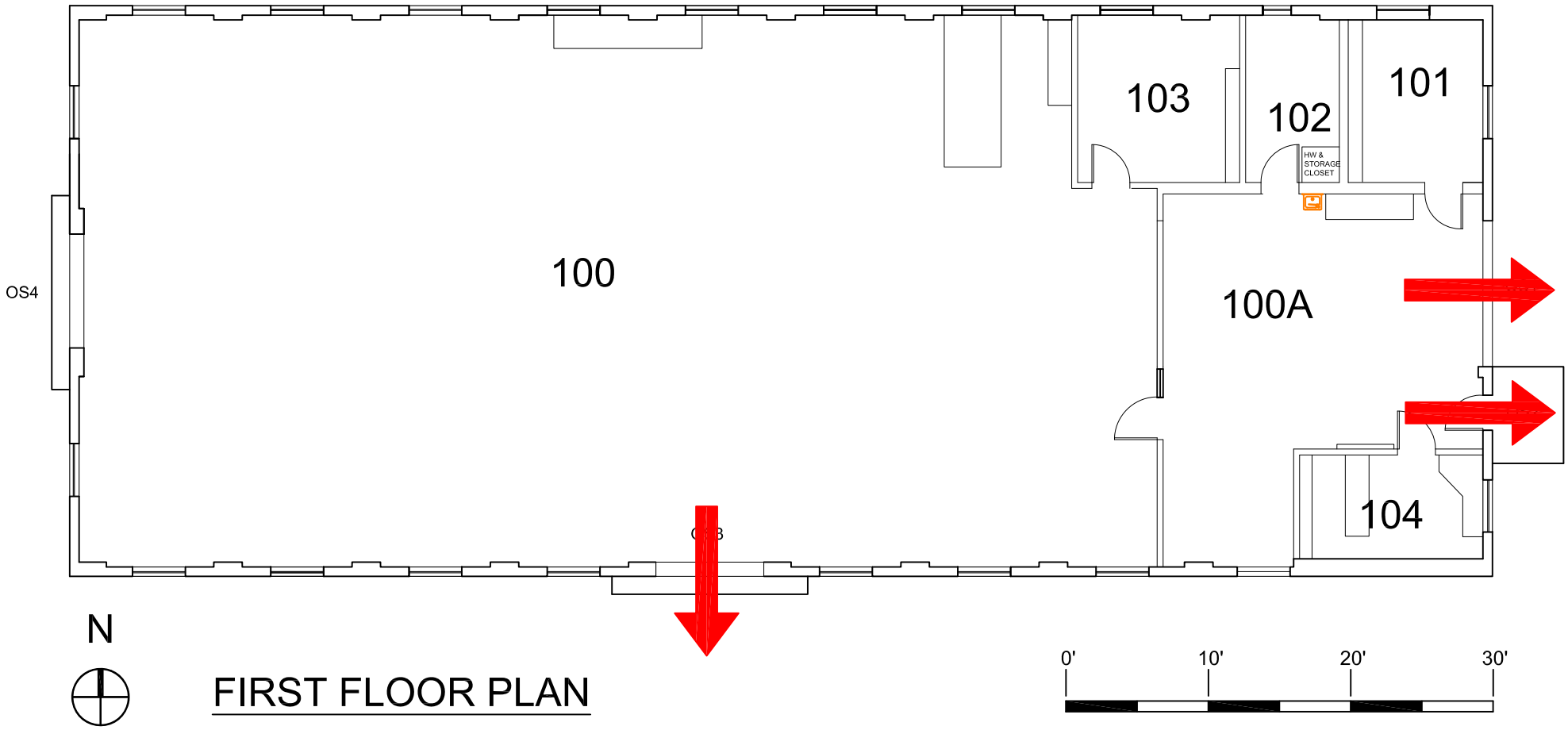
BLDG #0502

06-2014

## Safety Legend

-  Areas of Refuge
-  Tornado Shelter Areas
-  Exit/Evacuation Routes  
*In case of fire, do not use elevator*
-  AED Automatic External Defibrillator
-  CHAIR Evacuation Chair

Exterior Gross Area  
4005



FIRST FLOOR PLAN

GRAPHIC SCALE

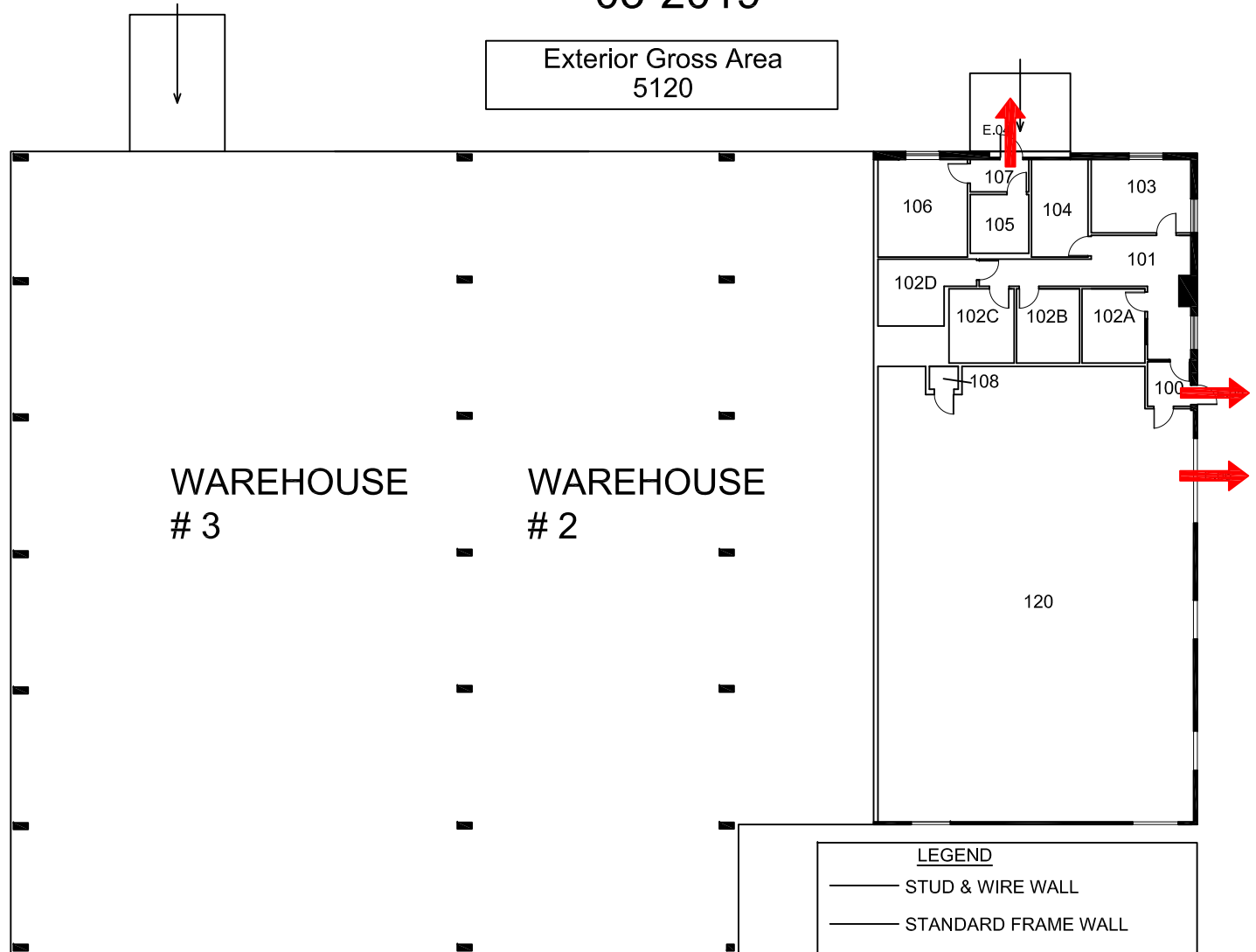


# FACILITIES WAREHOUSE # 1






BLDG #0521

03-2019

Exterior Gross Area  
5120




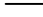
## Safety Legend

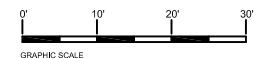
-  Areas of Refuge
-  Tornado Shelter Areas
-  Exit/Evacuation Routes  
*In case of fire, do not use elevator*
-  Automatic External Defibrillator
-  Evacuation Chair



## FIRST FLOOR PLAN

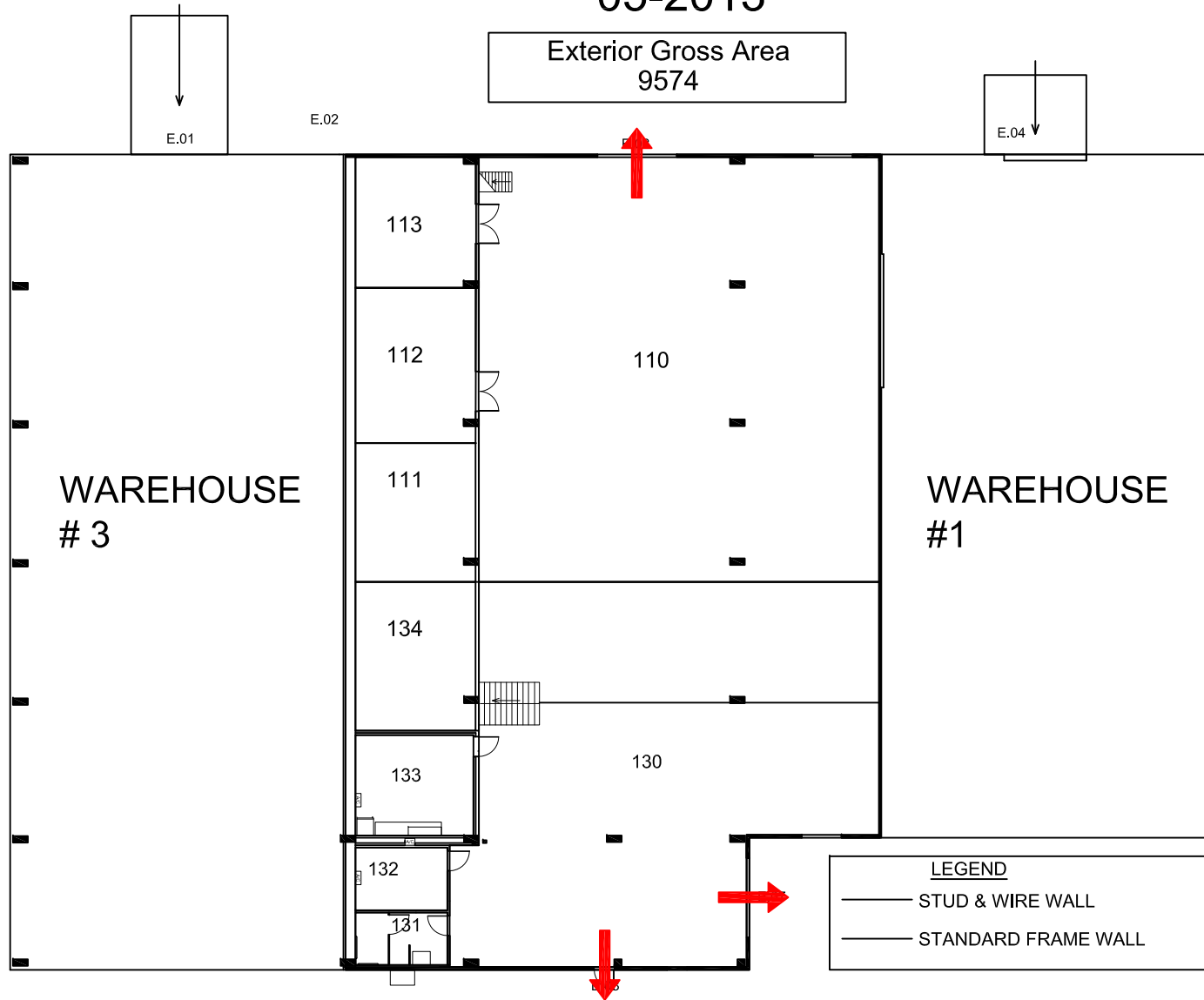
**LEGEND**

-  STUD & WIRE WALL
-  STANDARD FRAME WALL








# FACILITIES WAREHOUSE # 2

BLDG #0522  
05-2013



### Safety Legend

-  Areas of Refuge
-  Tornado Shelter Areas
-  Exit/Evacuation Routes  
*In case of fire, do not use elevator*
-  AED Automatic External Defibrillator
-  CHAIR Evacuation Chair

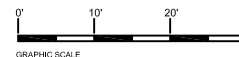
### LEGEND

-  STUD & WIRE WALL
-  STANDARD FRAME WALL

N



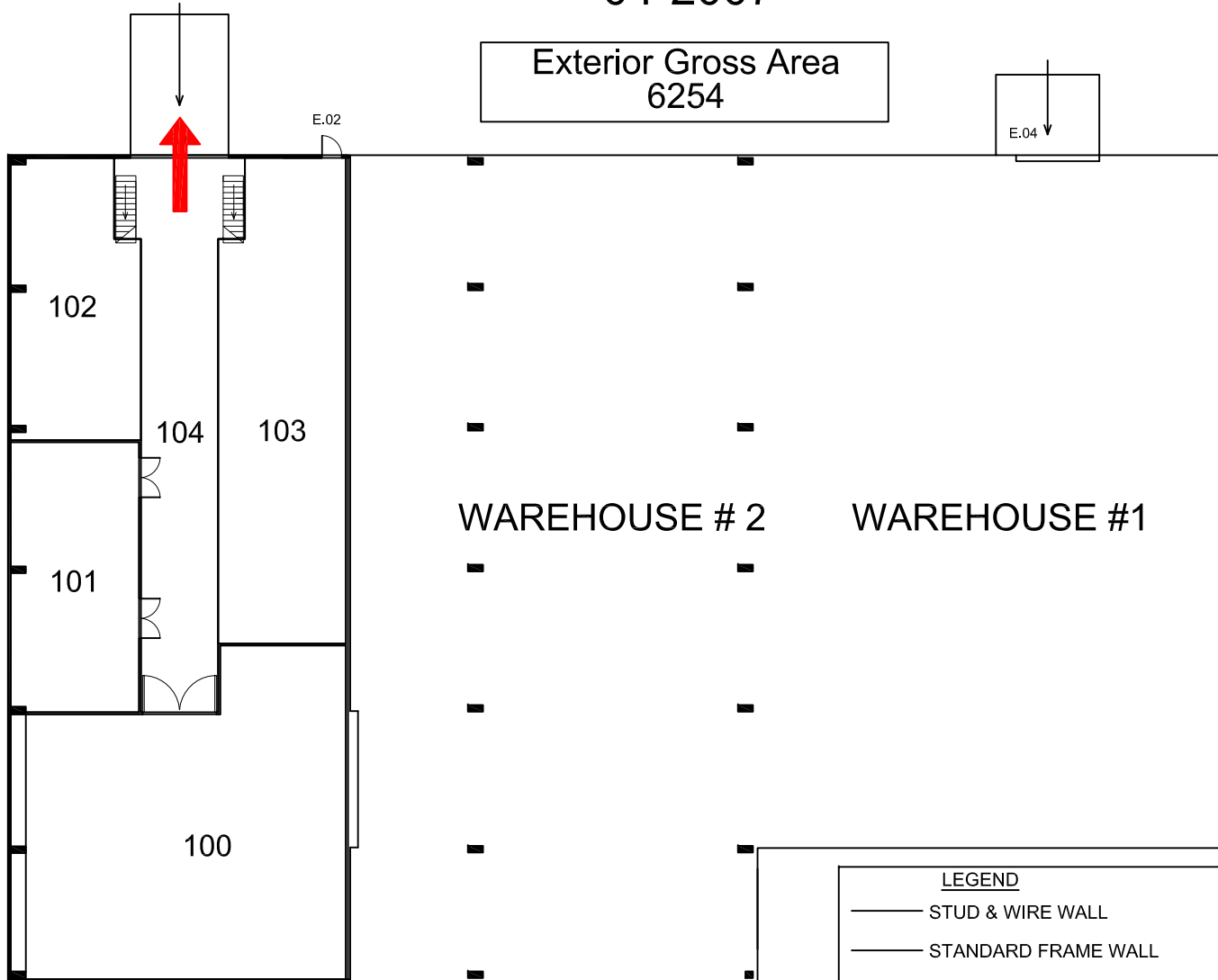
FIRST FLOOR PLAN








# FACILITIES WAREHOUSE # 3

BLDG #0523  
04-2007

Exterior Gross Area  
6254



## Safety Legend

-  Areas of Refuge
-  Tornado Shelter Areas
-  Exit/Evacuation Routes  
*In case of fire, do not use elevator*
-  AED Automatic External Defibrillator
-  CHAIR Evacuation Chair

## LEGEND

-  STUD & WIRE WALL
-  STANDARD FRAME WALL

N



FIRST FLOOR PLAN

