

Emergency Evacuation Procedures

Eagle Student Services Center

1147 Union Circle. Denton, TX 76201

Severe Weather

In the event of severe weather, all building occupants should immediately seek shelter in the designated shelter-in-place area in the building. If unable to safely move to the designated shelter-in-place area, seek shelter in a windowless interior room or hallway on the lowest floor of the building.

Building occupants on the first floor should take shelter in the southwest corner of the first floor (Register's Office work room).

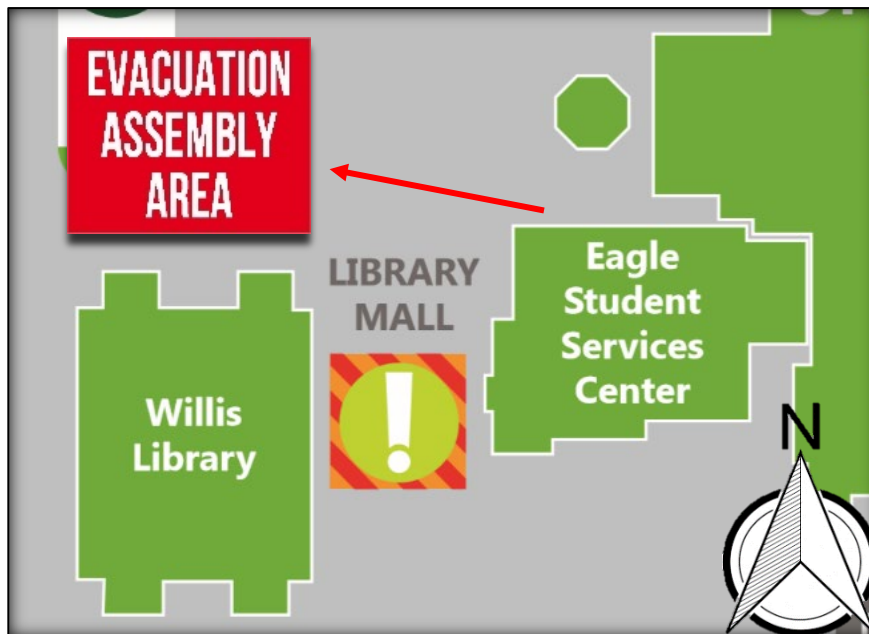
Building occupants on the second/ third floor should shelter in the classroom 225. Avoid standing near windows, walls and doors made of glass.

Bomb Threat/Fire

In the event of a bomb threat or fire in the building, all building occupants should immediately evacuate the building using the nearest exit. Once outside, proceed to the designated assembly area. If unable to safely move to the designated assembly area, contact one or more members of your department or unit to let them know you are safe and inform them of your whereabouts.

Persons with mobility impairments who are unable to safely exit the building should move to a designated area of refuge and await assistance from emergency responders.

All building occupants should immediately evacuate the building and proceed to the north side of Willis Library.

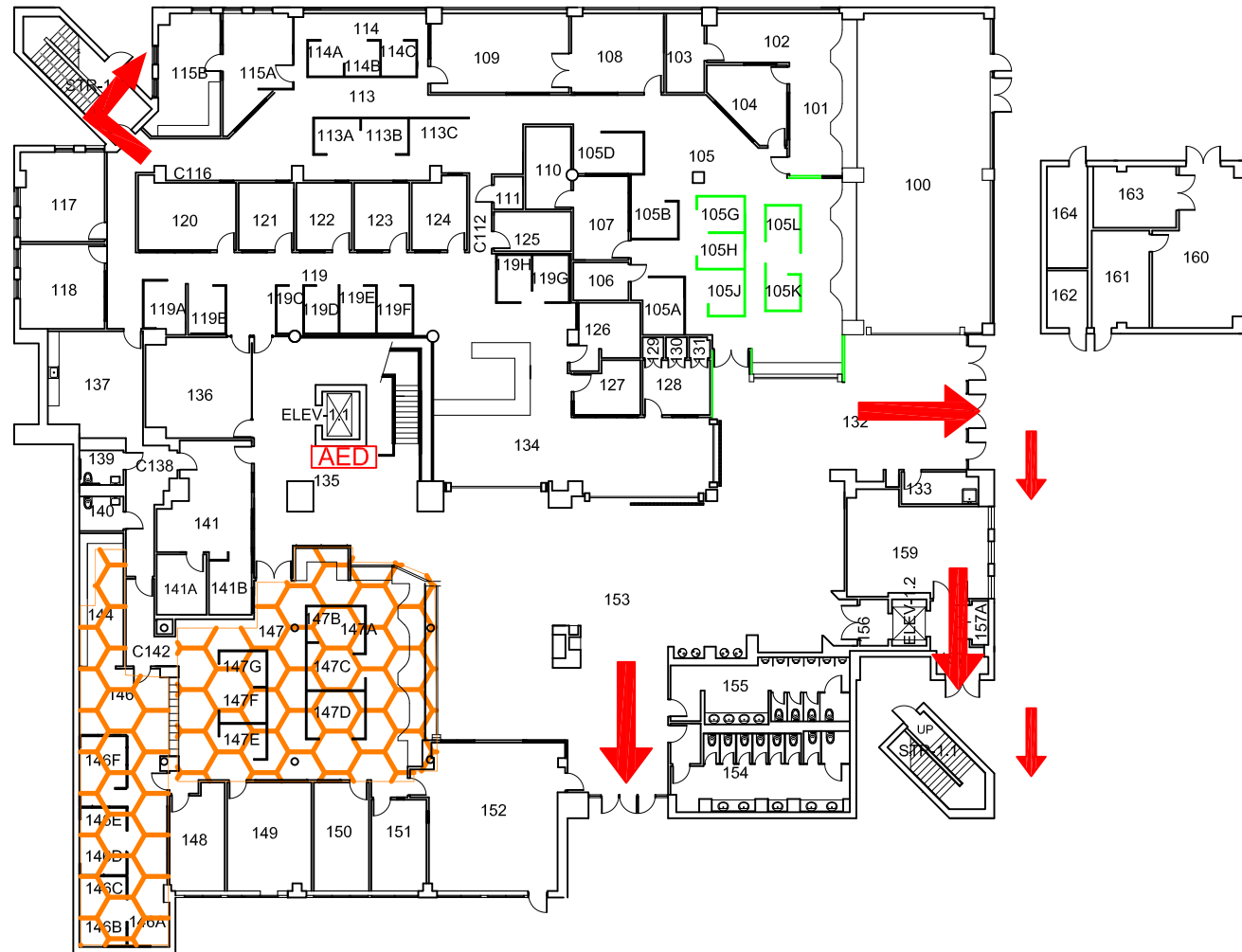


EAGLE STUDENT SERVICES CENTER






BLDG #0113

04-2016

Exterior Gross Area
24898

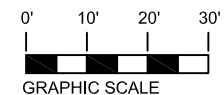


Safety Legend

-  Areas of Refuge
-  Tornado Shelter Areas
-  Exit/Evacuation Routes
- In case of fire, do not use elevator*
-  Automatic External Defibrillator
-  Evacuation Chair



FIRST FLOOR PLAN

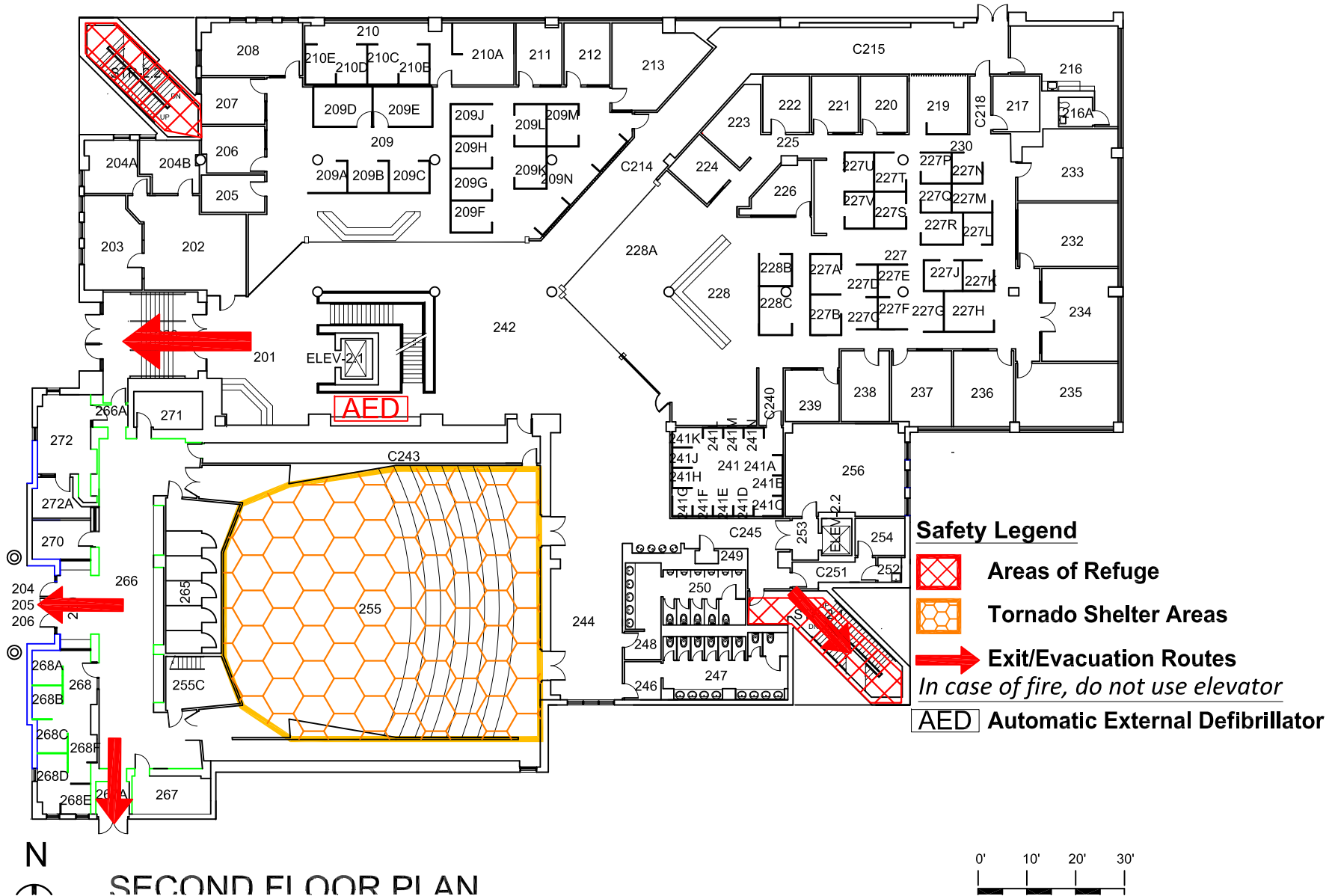


EAGLE STUDENT SERVICES CENTER

BLDG #0113

04-2016

Exterior Gross Area
29545



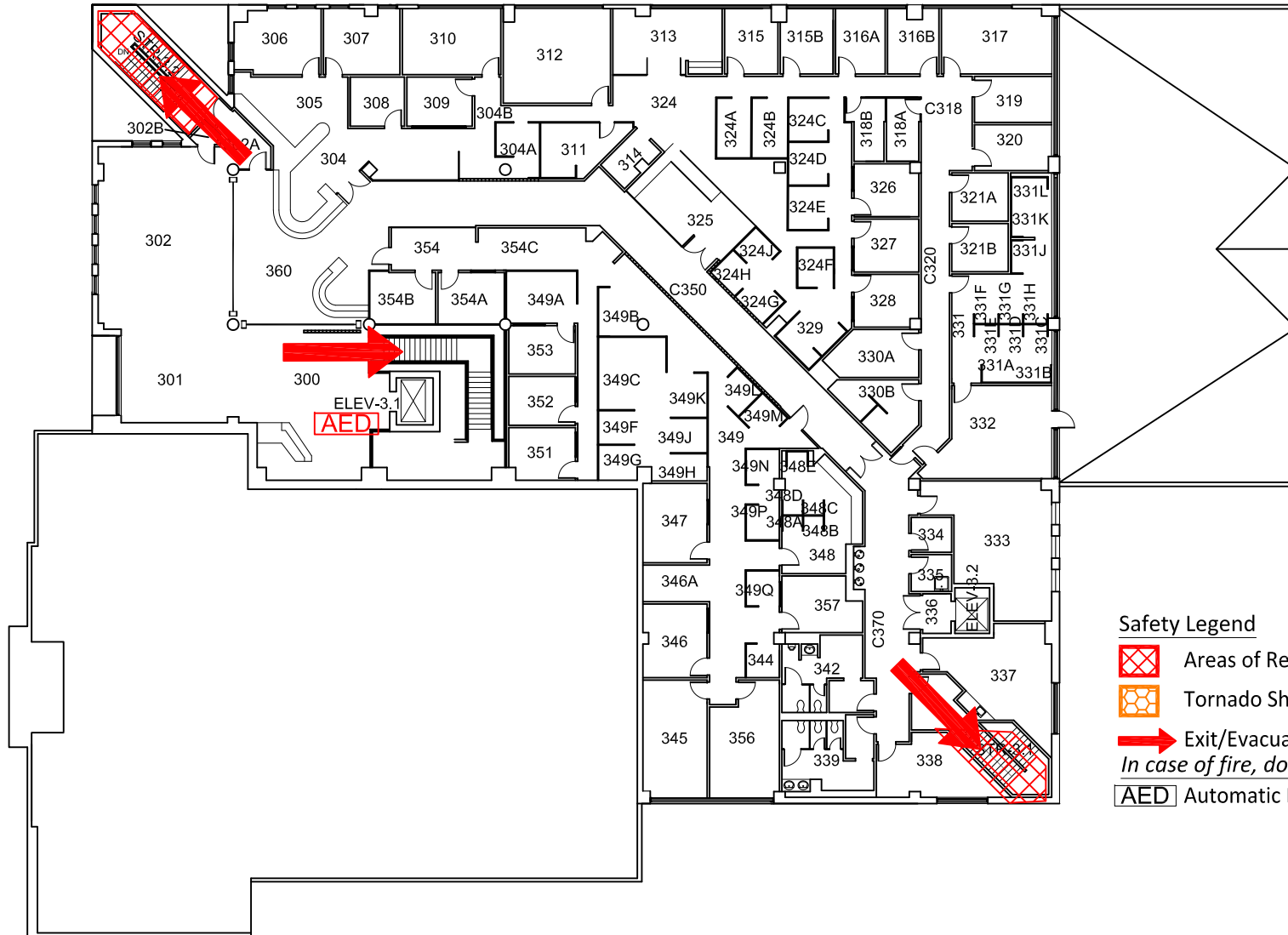
SECOND FLOOR PLAN

EAGLE STUDENT SERVICES CENTER





BLDG #0113

04-2016

Exterior Gross Area
17617



Safety Legend

-  Areas of Refuge
-  Tornado Shelter Areas
-  Exit/Evacuation Routes
In case of fire, do not use elevator
-  Automatic External Defibrillator



THIRD FLOOR PLAN

