

# Emergency Evacuation Procedures

## Discovery Park

3940 N Elm St. Denton, TX 76207

### Severe Weather

In the event of severe weather, all building occupants should immediately seek shelter in the designated shelter-in-place area in the building. If unable to safely move to the designated shelter-in-place area, seek shelter in a windowless interior room or hallway on the lowest floor of the building.

**All building occupants should take shelter in the underground tunnels if time permits, or in the interior hallways of wings E, F, or interior B classrooms.**

**Avoid standing near windows, walls and doors made of glass.**

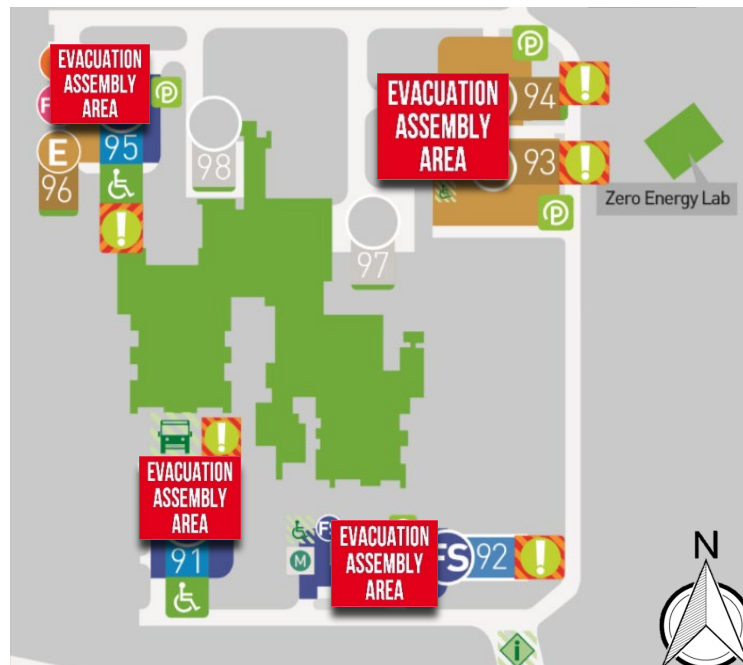
---

### Bomb Threat/Fire

In the event of a bomb threat or fire in the building, all building occupants should immediately evacuate the building using the nearest exit. Once outside, proceed to the designated assembly area. If unable to safely move to the designated assembly area, contact one or more members of your department or unit to let them know you are safe and inform them of your whereabouts.

Persons with mobility impairments who are unable to safely exit the building should move to a designated area of refuge and await assistance from emergency responders.

**All building occupants should immediately evacuate the building and proceed to the closest emergency evacuation assembly area.**



# DISCOVERY PARK

## BUILDING #0190

### 11-2017

Exterior Gross Area  
350508

#### Safety Legend



Areas of Refuge



Tornado Shelter Areas



Exit/Evacuation Routes

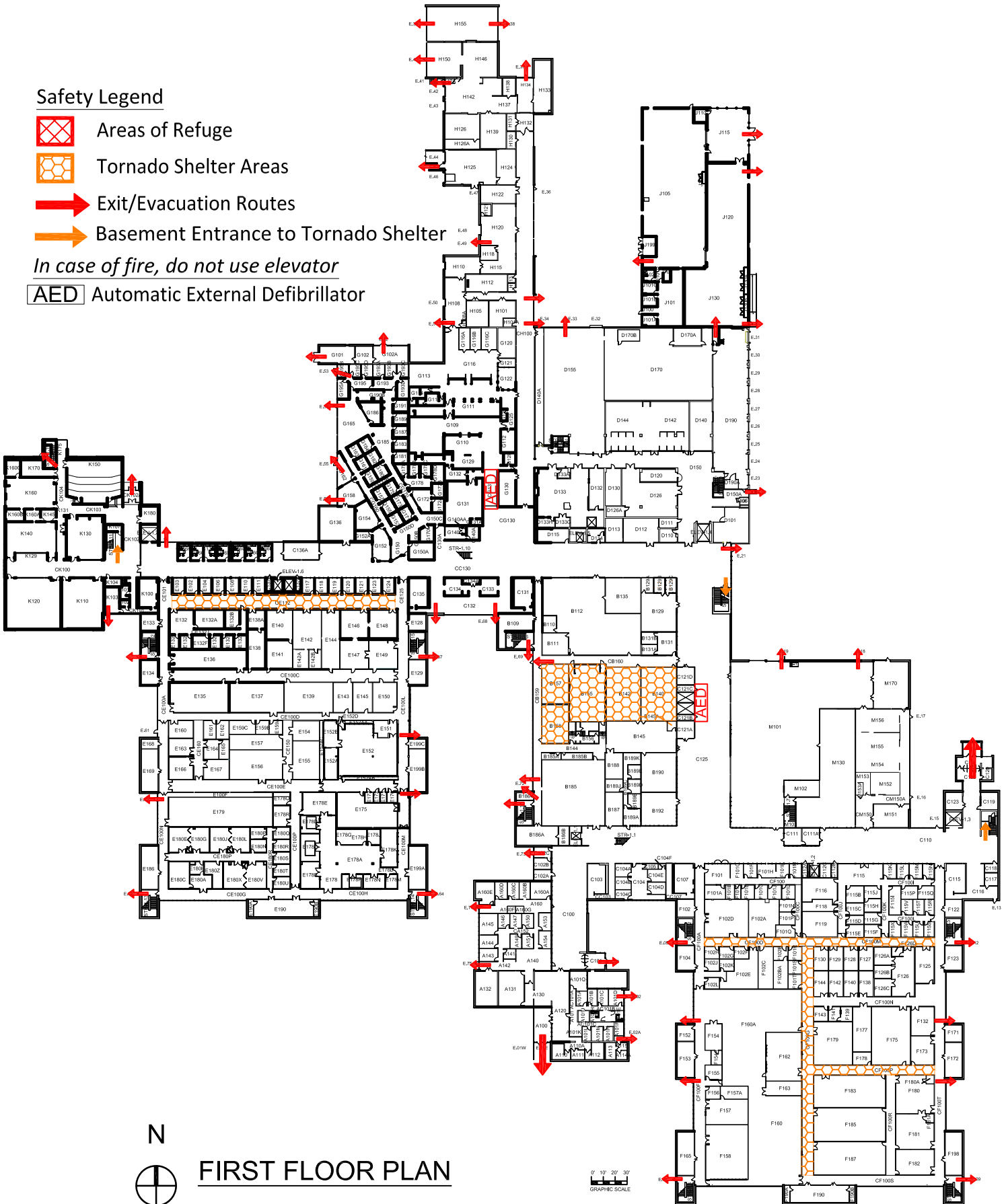


Basement Entrance to Tornado Shelter

*In case of fire, do not use elevator*



AED Automatic External Defibrillator



N



### FIRST FLOOR PLAN

0' 10' 20' 30'  
GRAPHIC SCALE

# DISCOVERY PARK

## BUILDING #0190

### 03-2019

Exterior Gross Area  
235769

### Safety Legend



Areas of Refuge

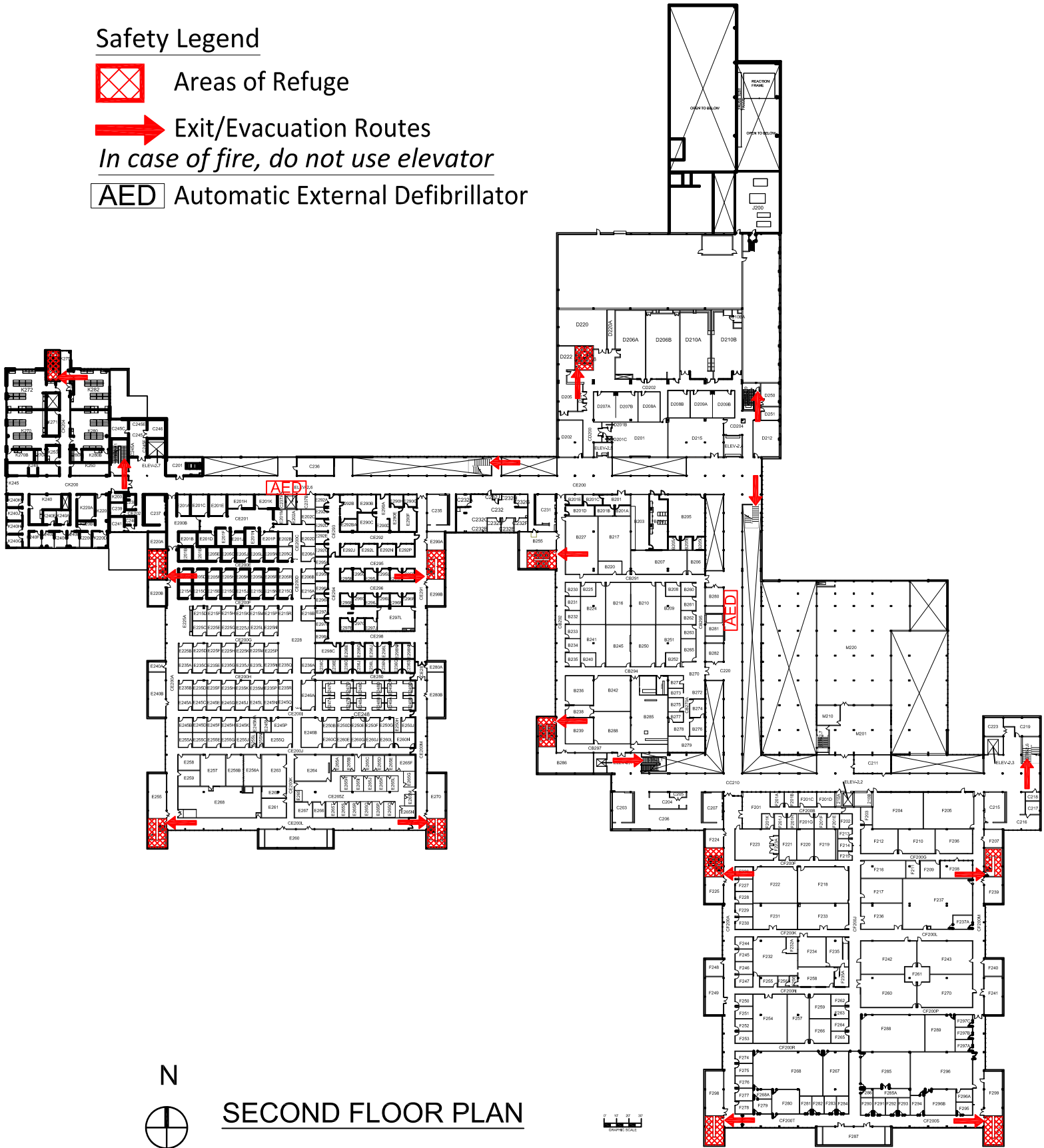


Exit/Evacuation Routes

*In case of fire, do not use elevator*



Automatic External Defibrillator



N



## SECOND FLOOR PLAN

