

Emergency Evacuation Procedures

Curry Hall

200 Avenue A. Denton, TX 76201

Severe Weather

In the event of severe weather, all building occupants should immediately seek shelter in the designated shelter-in-place area in the building. If unable to safely move to the designated shelter-in-place area, seek shelter in a windowless interior room or hallway on the lowest floor of the building.

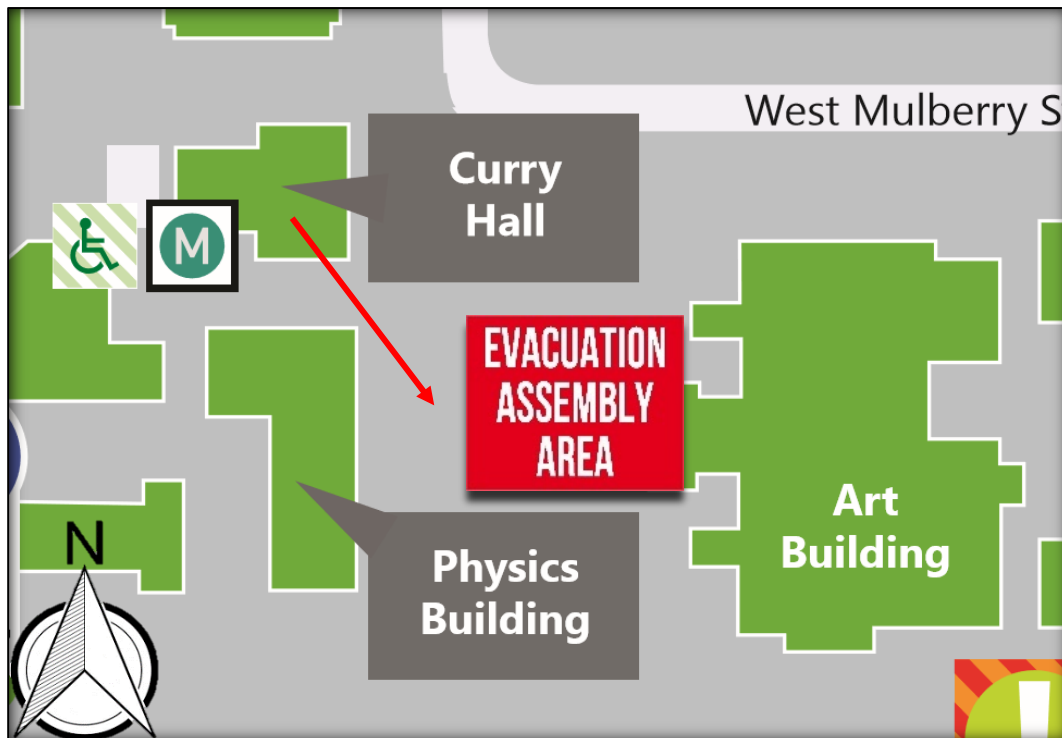
All building occupants should take shelter in the interior hallways and restrooms on the first and second floors. Avoid standing near windows, walls and doors made of glass.

Bomb Threat/Fire

In the event of a bomb threat or fire in the building, all building occupants should immediately evacuate the building using the nearest exit. Once outside, proceed to the designated assembly area. If unable to safely move to the designated assembly area, contact one or more members of your department or unit to let them know you are safe and inform them of your whereabouts.

Persons with mobility impairments who are unable to safely exit the building should move to a designated area of refuge and await assistance from emergency responders.

All building occupants should immediately evacuate the building and proceed to the south east to the lawn by the Art Building.



CURRY HALL

BLDG #0107
04-2007

Safety Legend



Areas of Refuge



Tornado Shelter Areas

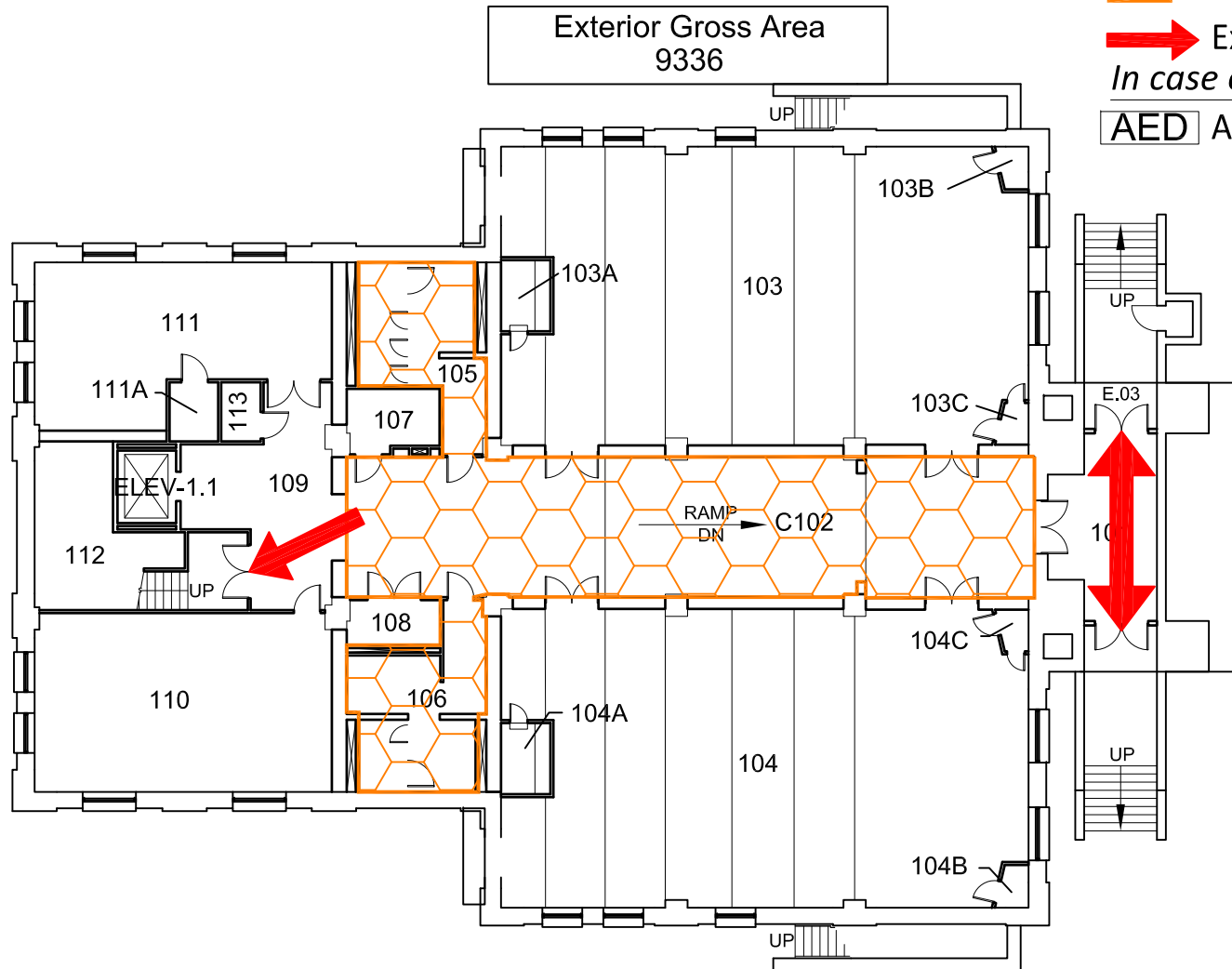


Exit/Evacuation Routes

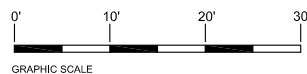
In case of fire, do not use elevator



Automatic External Defibrillator



FIRST FLOOR PLAN



CURRY HALL

BLDG #0107

06-2007

Exterior Gross Area
9035

Safety Legend



Areas of Refuge



Tornado Shelter Areas

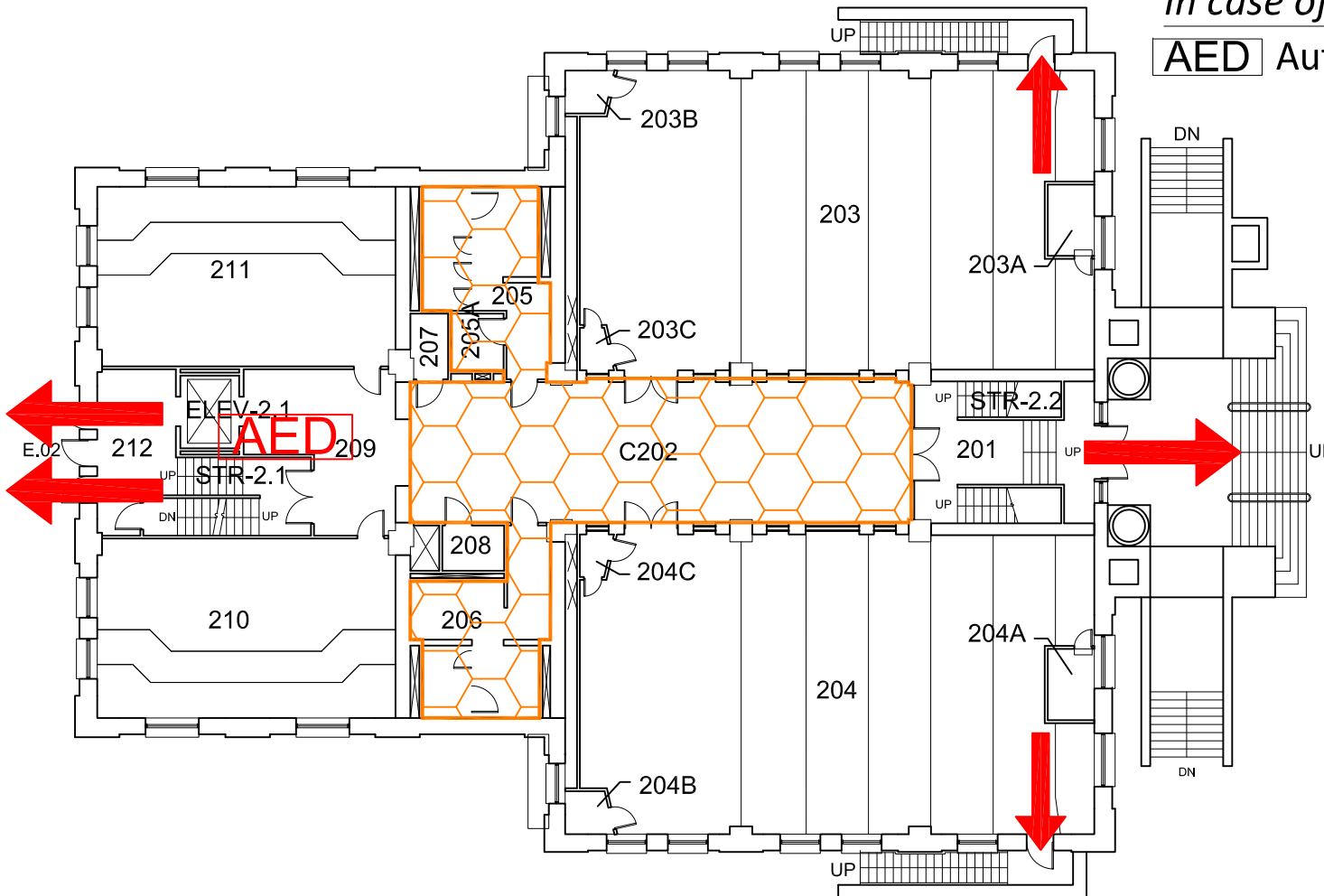


Exit/Evacuation Routes

In case of fire, do not use elevator



AED Automatic External Defibrillator



SECOND FLOOR PLAN



CURRY HALL

BLDG #0107

01-2018

Exterior Gross Area
9040

Safety Legend



Areas of Refuge



Tornado Shelter Areas

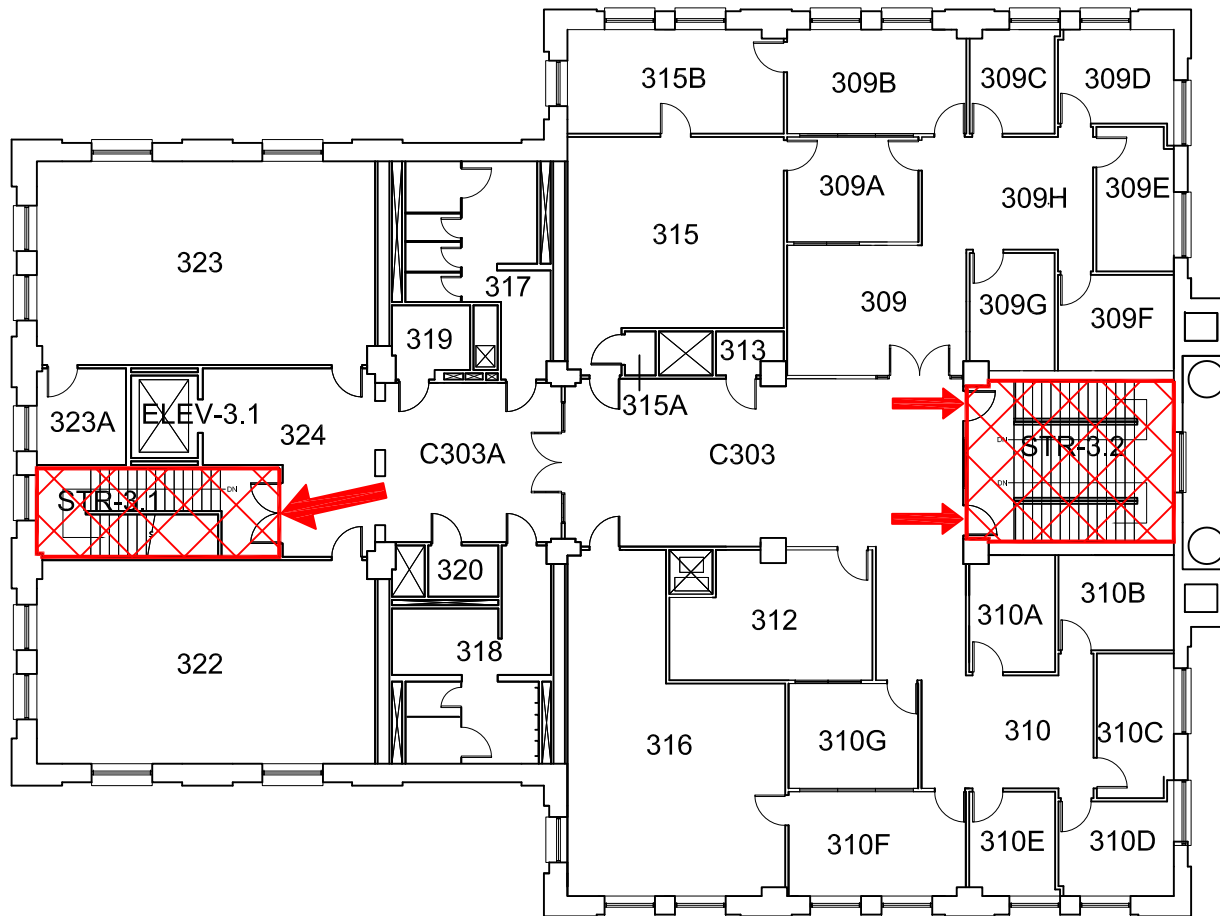


Exit/Evacuation Routes

In case of fire, do not use elevator



Automatic External Defibrillator



THIRD FLOOR PLAN

