

Emergency Evacuation Procedures

Crumley Hall

1621 W. Highland St. Denton, TX 76201

Severe Weather

In the event of severe weather, all building occupants should immediately seek shelter in the designated shelter-in-place area in the building. If unable to safely move to the designated shelter-in-place area, seek shelter in a windowless interior room or hallway on the lowest floor of the building.

All building occupants should take shelter the interior hallways of the lowest level of their respective wing. Avoid standing near windows, walls and doors made of glass.

Bomb Threat/Fire

In the event of a bomb threat or fire in the building, all building occupants should immediately evacuate the building using the nearest exit. Once outside, proceed to the designated assembly area. If unable to safely move to the designated assembly area, contact your RA to let them know you are safe and inform them of your whereabouts.

Persons with mobility impairments who are unable to safely exit the building should move to a designated area of refuge and await assistance from emergency responders.

All building occupants should immediately evacuate the building and proceed to the Willis Library Mall.



CRUMLEY HALL

BLDG # 0178

11-2018

Exterior Gross Area
26144

Safety Legend



Tornado Shelter Areas

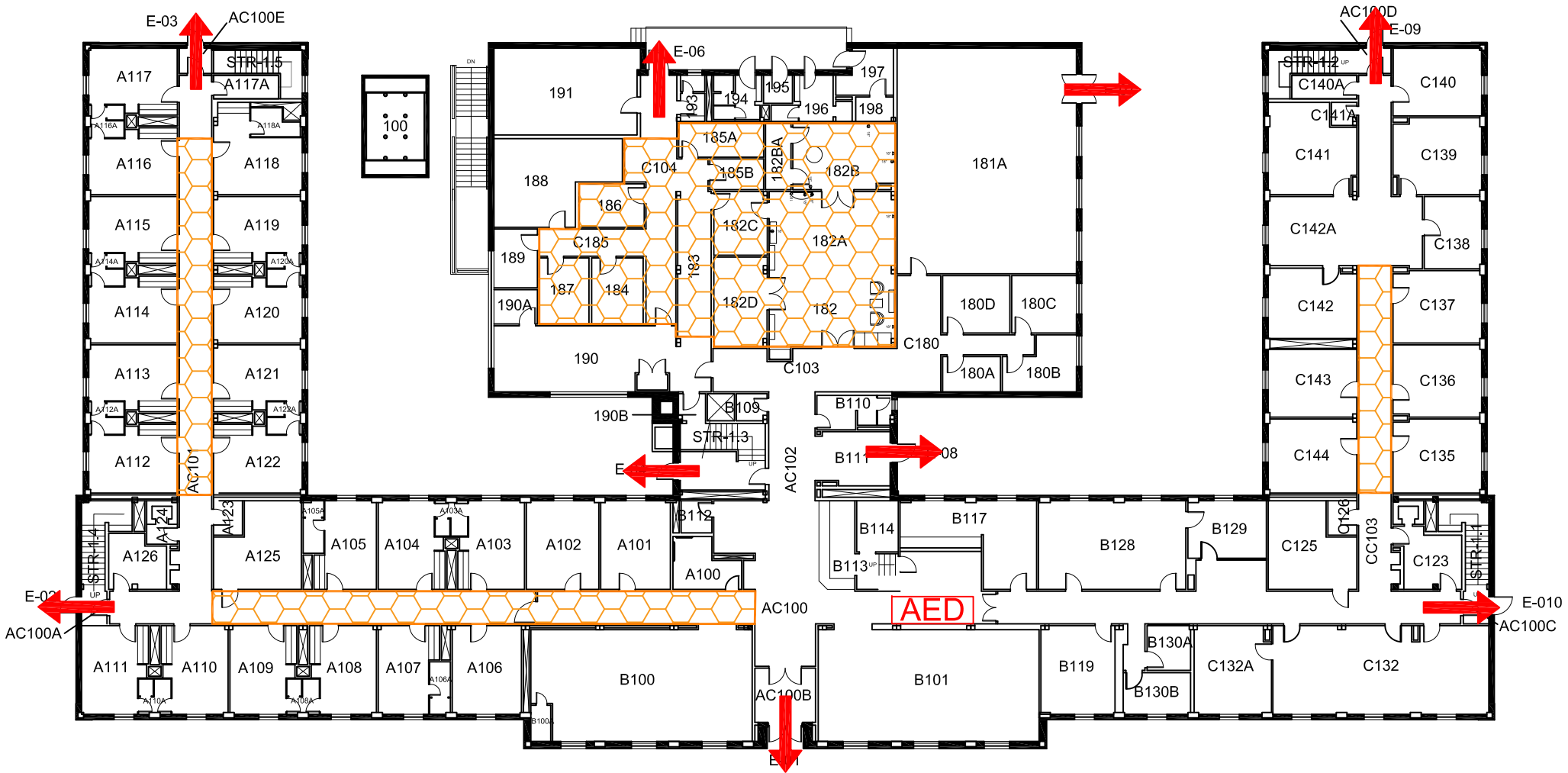


Exit/Evacuation Routes

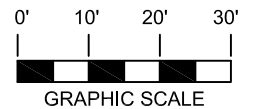
In case of fire, do not use elevator



Automatic External Defibrillator



FIRST FLOOR PLAN





CRUMLEY HALL


BLDG # 0178

11-2018

Safety Legend

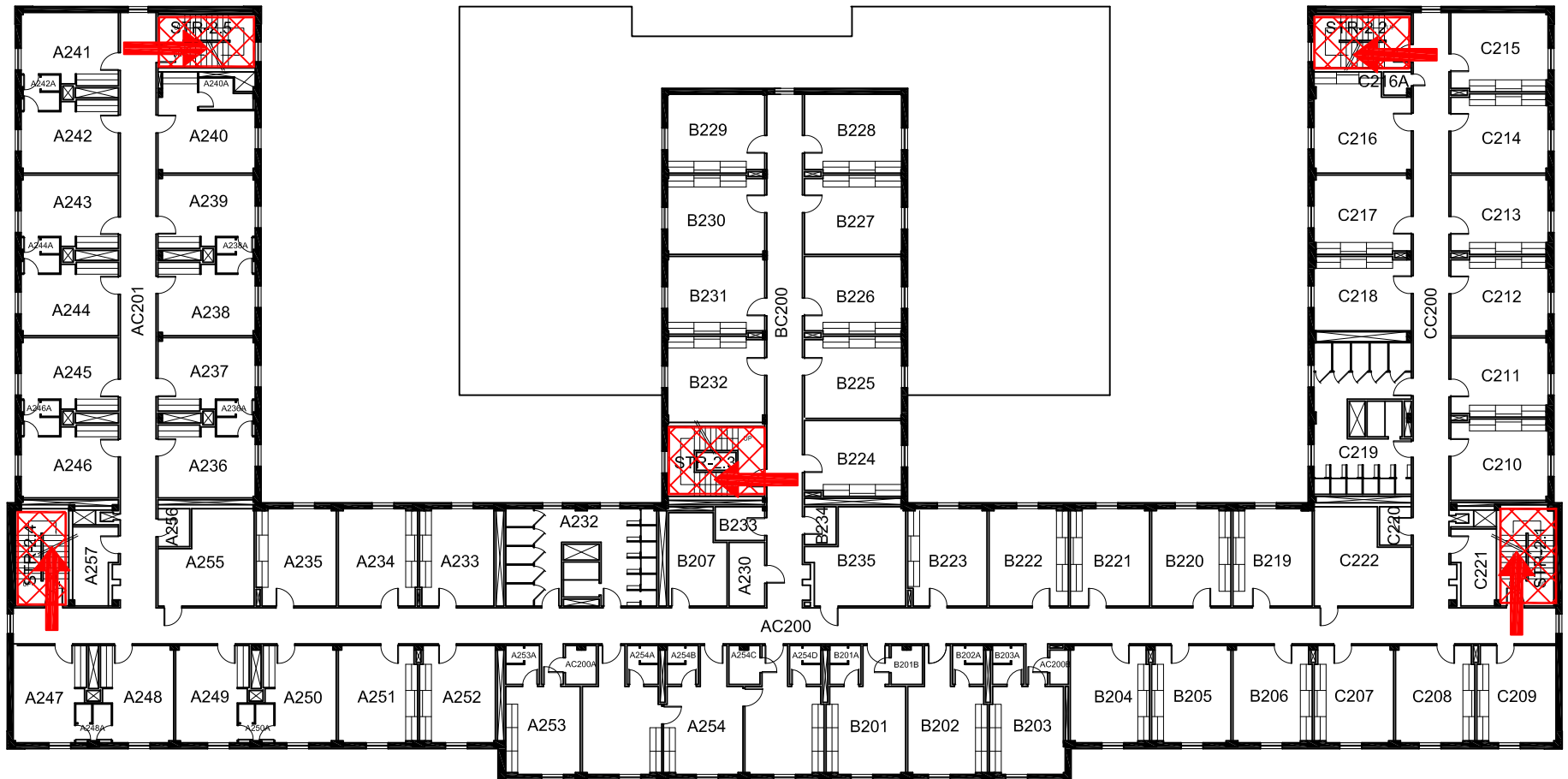
 Areas of Refuge

 Tornado Shelter Areas

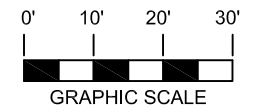
 Exit/Evacuation Routes
In case of fire, do not use elevator

 Automatic External Defibrillator

Exterior Gross Area
21092



SECOND FLOOR PLAN







CRUMLEY HALL

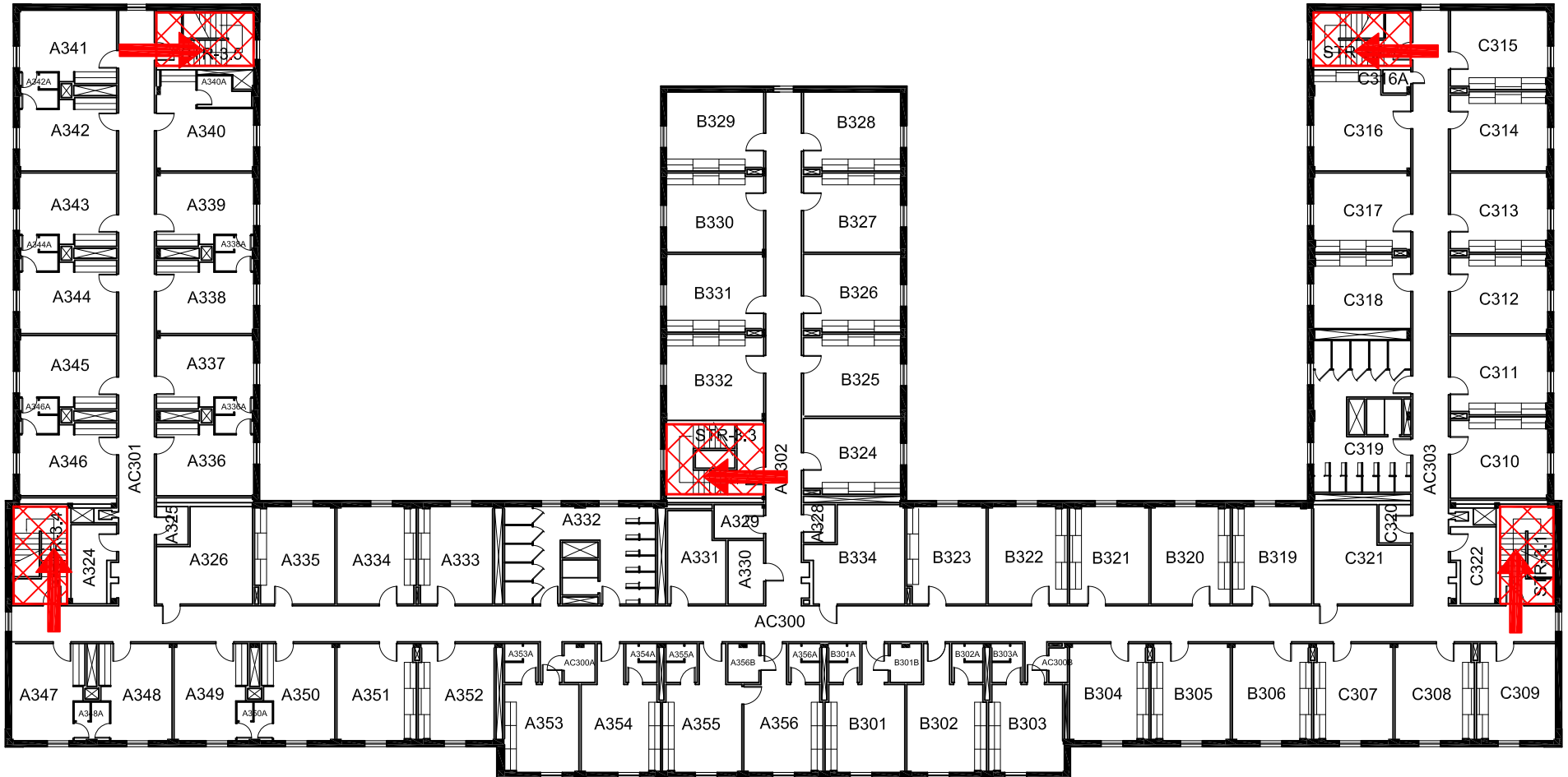
BLDG # 0178

11-2018

Safety Legend

-  Areas of Refuge
-  Tornado Shelter Areas
-  Exit/Evacuation Routes
- In case of fire, do not use elevator*
-  Automatic External Defibrillator

Exterior Gross Area
21092



THIRD FLOOR PLAN

