

Emergency Evacuation Procedures

College Inn

200 Ave. D Denton, TX 76201

Severe Weather

In the event of severe weather, all building occupants should immediately seek shelter in the designated shelter-in-place area in the building. If unable to safely move to the designated shelter-in-place area, seek shelter in a windowless interior room or hallway on the lowest floor of the building.

Residents should take shelter in the restrooms. Other occupants should seek interior shelters away from windows, walls and doors made of glass.

Bomb Threat/Fire

In the event of a bomb threat or fire in the building, all building occupants should immediately evacuate the building using the nearest exit. Once outside, proceed to the designated assembly area. If unable to safely move to the designated assembly area, contact one or more members of your department or unit to let them know you are safe and inform them of your whereabouts.

Persons with mobility impairments who are unable to safely exit the building should move to a designated area of refuge and await assistance from emergency responders.

All building occupants should immediately evacuate the building and proceed to parking lot 7 southeast of the College Inn.

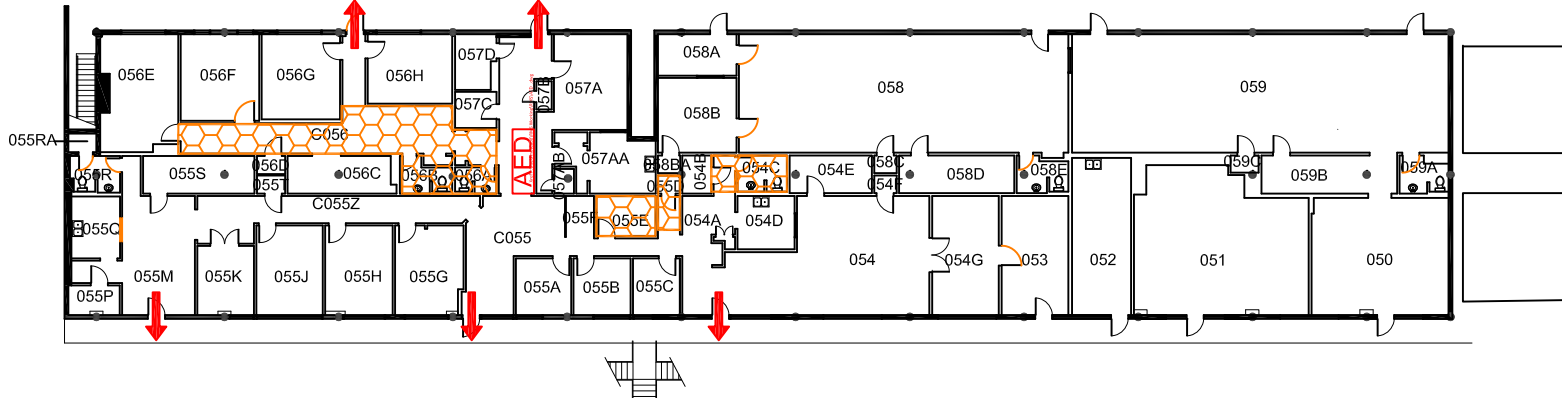


COLLEGE INN

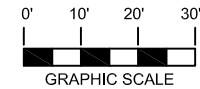
BLDG # 0183

08-2013


Exterior Gross Area
12099





GROUND FLOOR PLAN




Safety Legend


 Areas of Refuge

 Tornado Shelter Areas

 Exit/Evacuation Routes

In case of fire, do not use elevator

 Automatic External Defibrillator

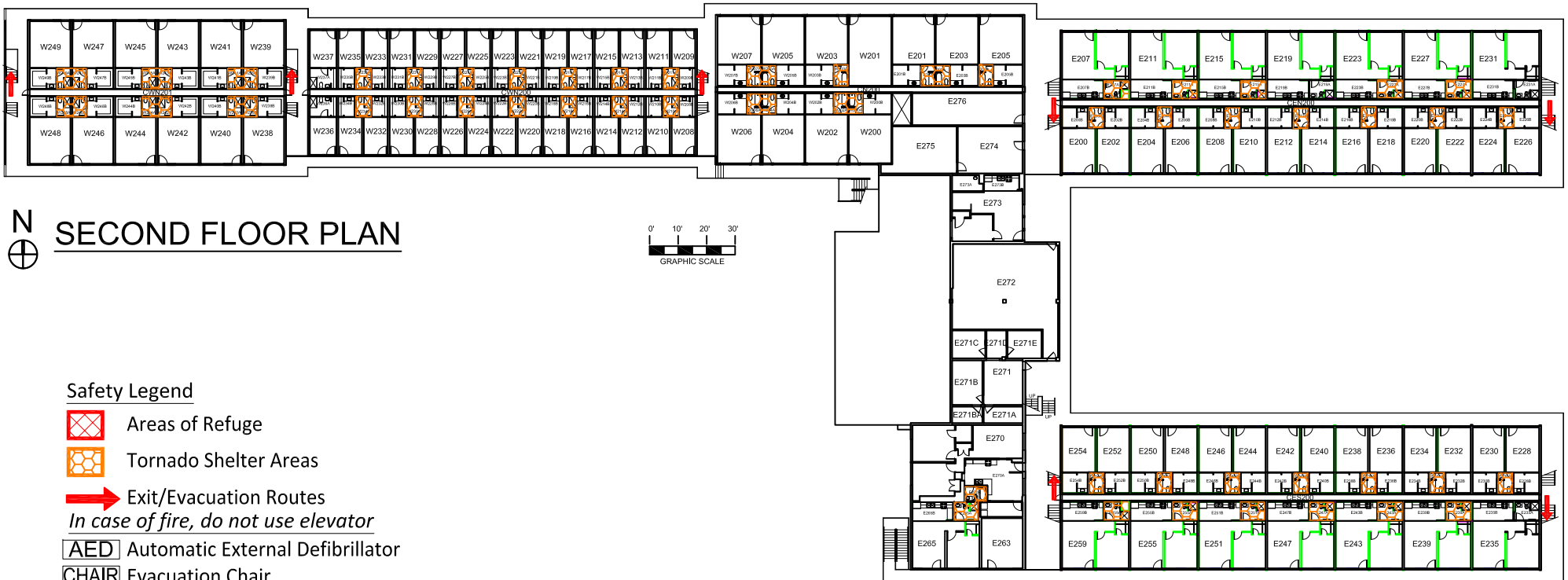
 Evacuation Chair

COLLEGE INN

BLDG # 0183






09-2018

Exterior Gross Area
17084



N SECOND FLOOR PLAN

Safety Legend

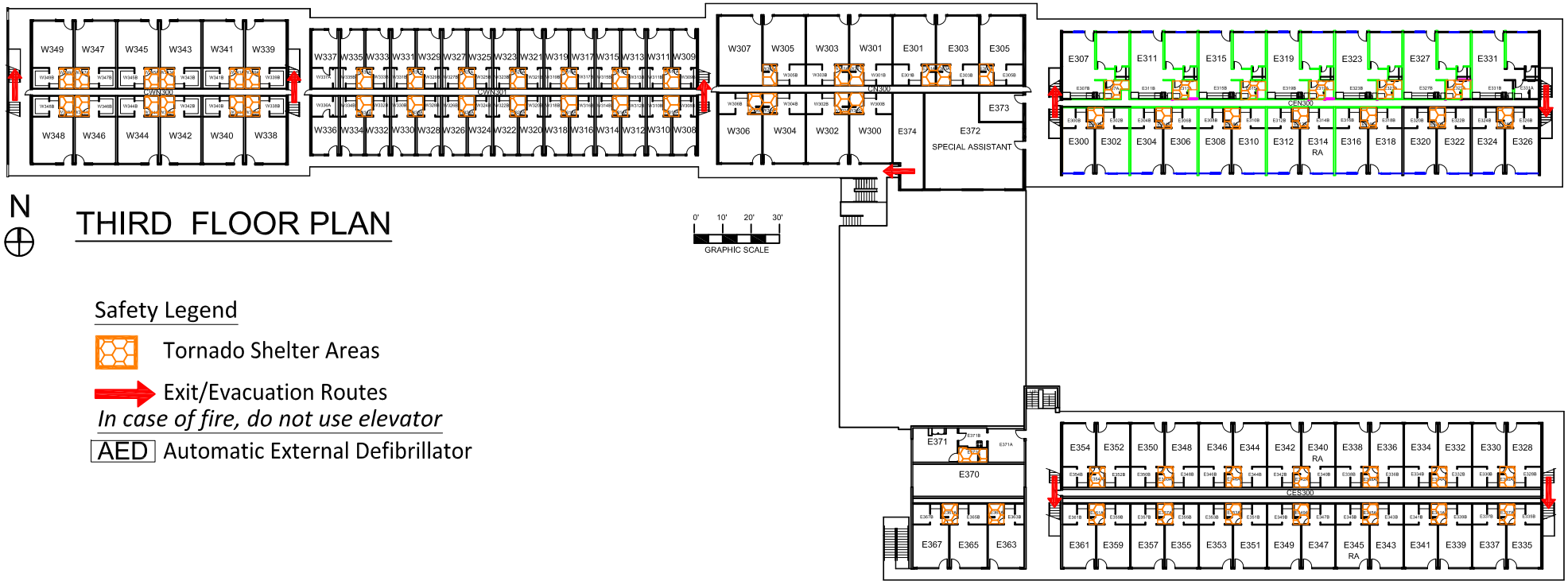
-  Areas of Refuge
-  Tornado Shelter Areas
-  Exit/Evacuation Routes
In case of fire, do not use elevator
-  AED Automatic External Defibrillator
-  CHAIR Evacuation Chair

COLLEGE INN

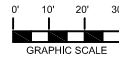
BLDG # 0183

09-2018

Exterior Gross Area
37065



THIRD FLOOR PLAN



Safety Legend



Tornado Shelter Areas



Exit/Evacuation Routes

In case of fire, do not use elevator



Automatic External Defibrillator