

# Emergency Evacuation Procedures

## Clark Hall

1717 Maple St. Denton, TX 76201

### Severe Weather

In the event of severe weather, all building occupants should immediately seek shelter in the designated shelter-in-place area in the building. If unable to safely move to the designated shelter-in-place area, seek shelter in a windowless interior room or hallway on the lowest floor of the building.

**All building occupants should take shelter in the hallways of the lowest level of their respective wing away from any windows.**

---

### Bomb Threat/Fire

In the event of a bomb threat or fire in the building, all building occupants should immediately evacuate the building using the nearest exit. Once outside, proceed to the designated assembly area. If unable to safely move to the designated assembly area, contact one or more members of your department or unit to let them know you are safe and inform them of your whereabouts.

Persons with mobility impairments who are unable to safely exit the building should move to a designated area of refuge and await assistance from emergency responders.

**All building occupants should immediately evacuate the building and proceed to parking lot 27, North of Clark Hall.**

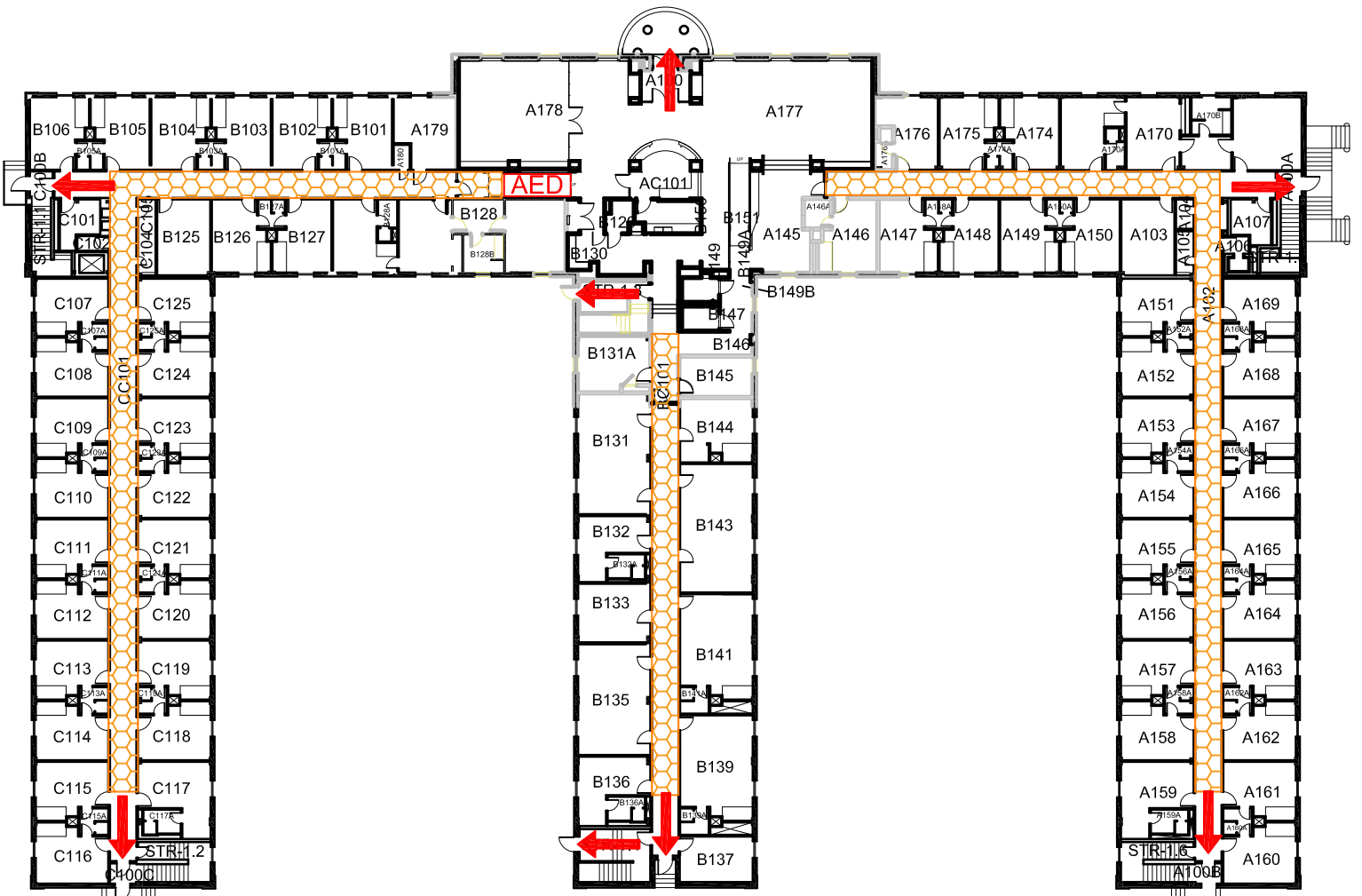


# CLARK HALL

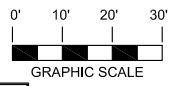
BLDG # 0177




05-2019

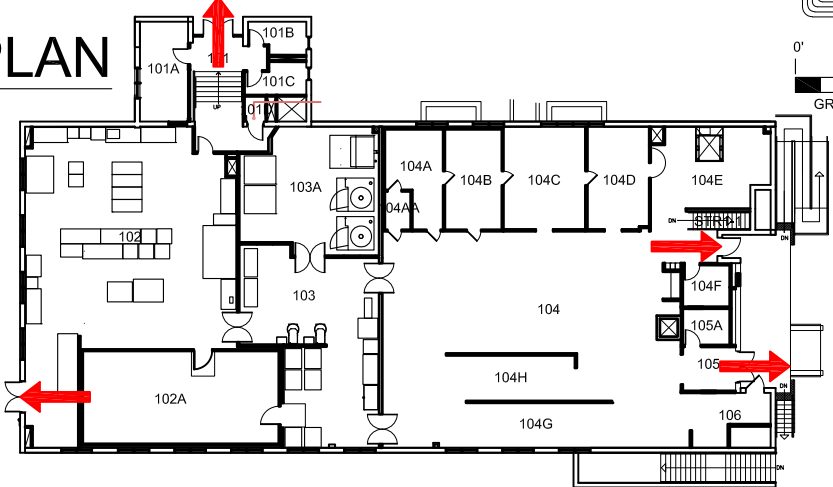
Exterior Gross Area  
40377



## N FIRST FLOOR PLAN



- Safety Legend**
-  Tornado Shelter Areas
  -  Exit/Evacuation Routes
  - In case of fire, do not use elevator*
  -  Automatic External Defibrillator

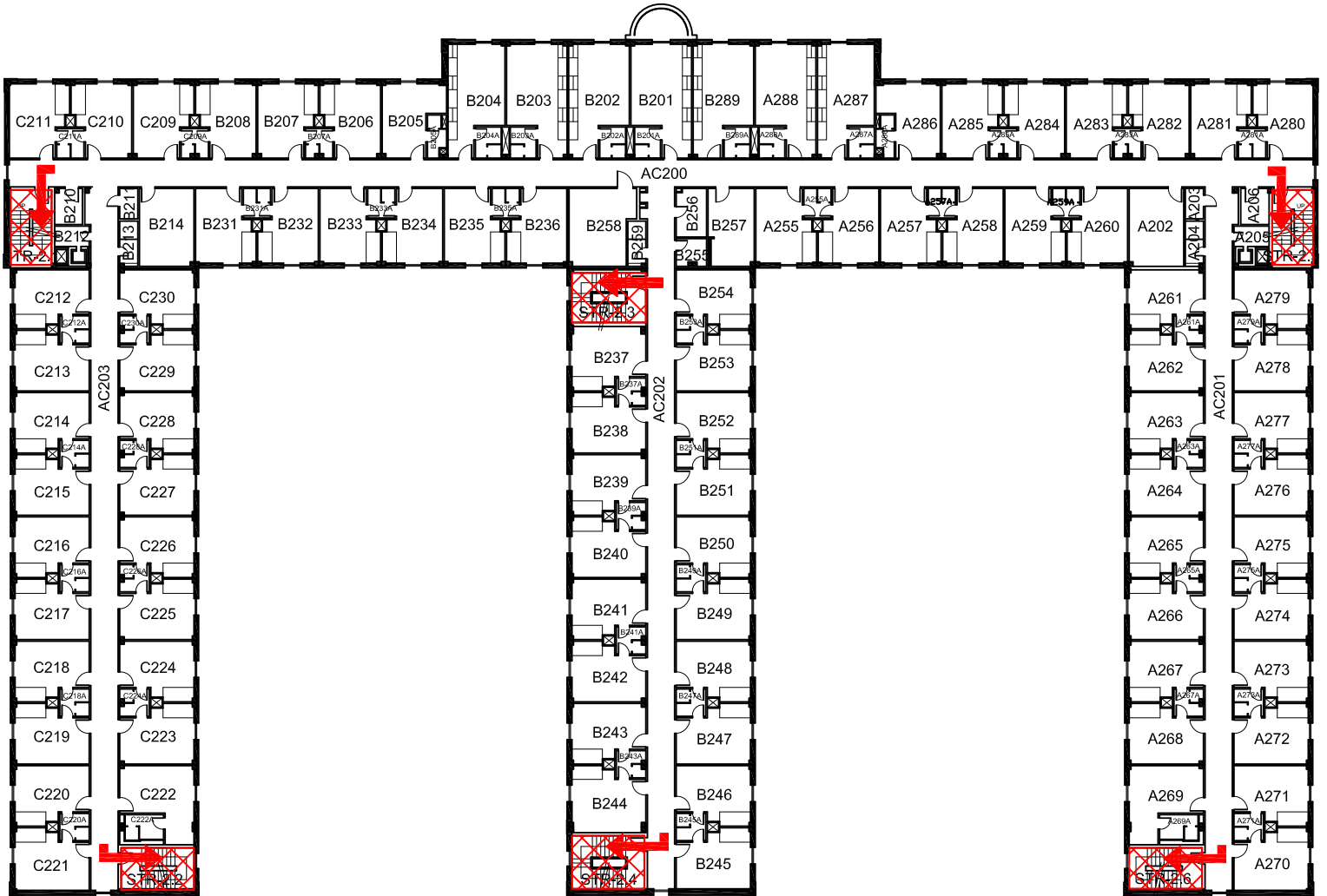


# CLARK HALL

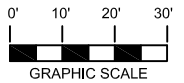
BLDG # 0177

10-2018





Exterior Gross Area  
29897

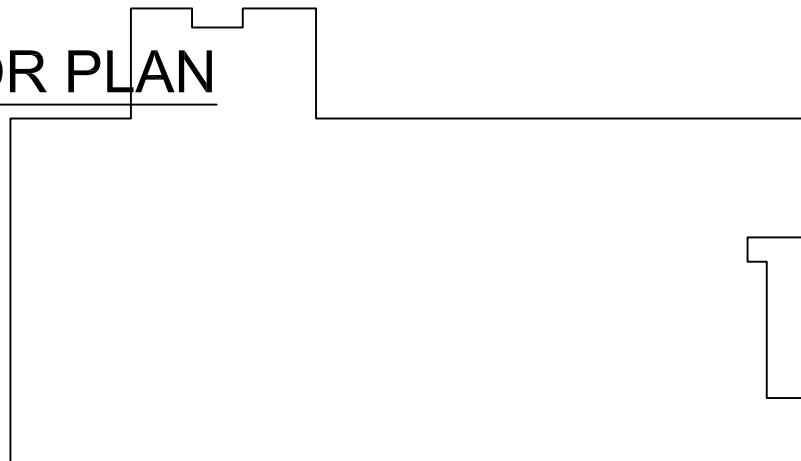


## SECOND FLOOR PLAN



### Safety Legend

-  Areas of Refuge
-  Tornado Shelter Areas
-  Exit/Evacuation Routes
- In case of fire, do not use elevator*
-  Automatic External Defibrillator



# CLARK HALL

## BLDG # 0177

### 11-2018

Exterior Gross Area  
29897

#### Safety Legend



Areas of Refuge



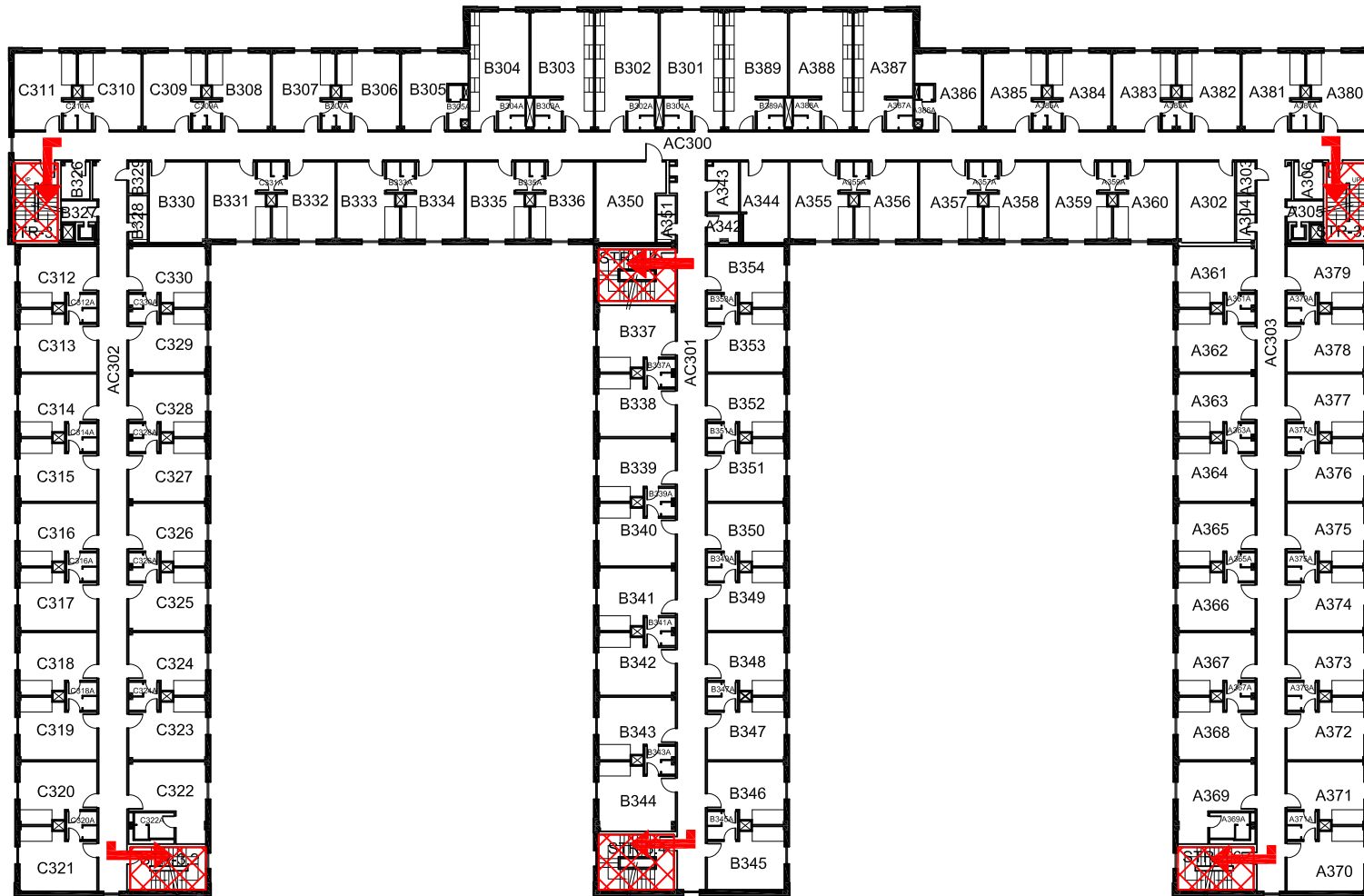
Tornado Shelter Areas



Exit/Evacuation Routes

*In case of fire, do not use elevator*

**AED** Automatic External Defibrillator



## THIRD FLOOR PLAN

