

Emergency Evacuation Procedures

Chestnut Hall

1800 Chestnut St. Denton, TX 76201

Severe Weather

In the event of severe weather, all building occupants should immediately seek shelter in the designated shelter-in-place area in the building. If unable to safely move to the designated shelter-in-place area, seek shelter in a windowless interior room or hallway on the lowest floor of the building.

All building occupants should take shelter in the interior hallway and rooms 120 A & B on the first floor. Avoid standing near windows, walls and doors made of glass.

Bomb Threat/Fire

In the event of a bomb threat or fire in the building, all building occupants should immediately evacuate the building using the nearest exit. Once outside, proceed to the designated assembly area. If unable to safely move to the designated assembly area, contact one or more members of your department or unit to let them know you are safe and inform them of your whereabouts.

Persons with mobility impairments who are unable to safely exit the building should move to a designated area of refuge and await assistance from emergency responders.

All building occupants should immediately evacuate the building and proceed to the front of the Physical Education Building (PEB).




CHESTNUT HALL


BLDG #0136


06-2017


Exterior Gross Area
26313


Safety Legend

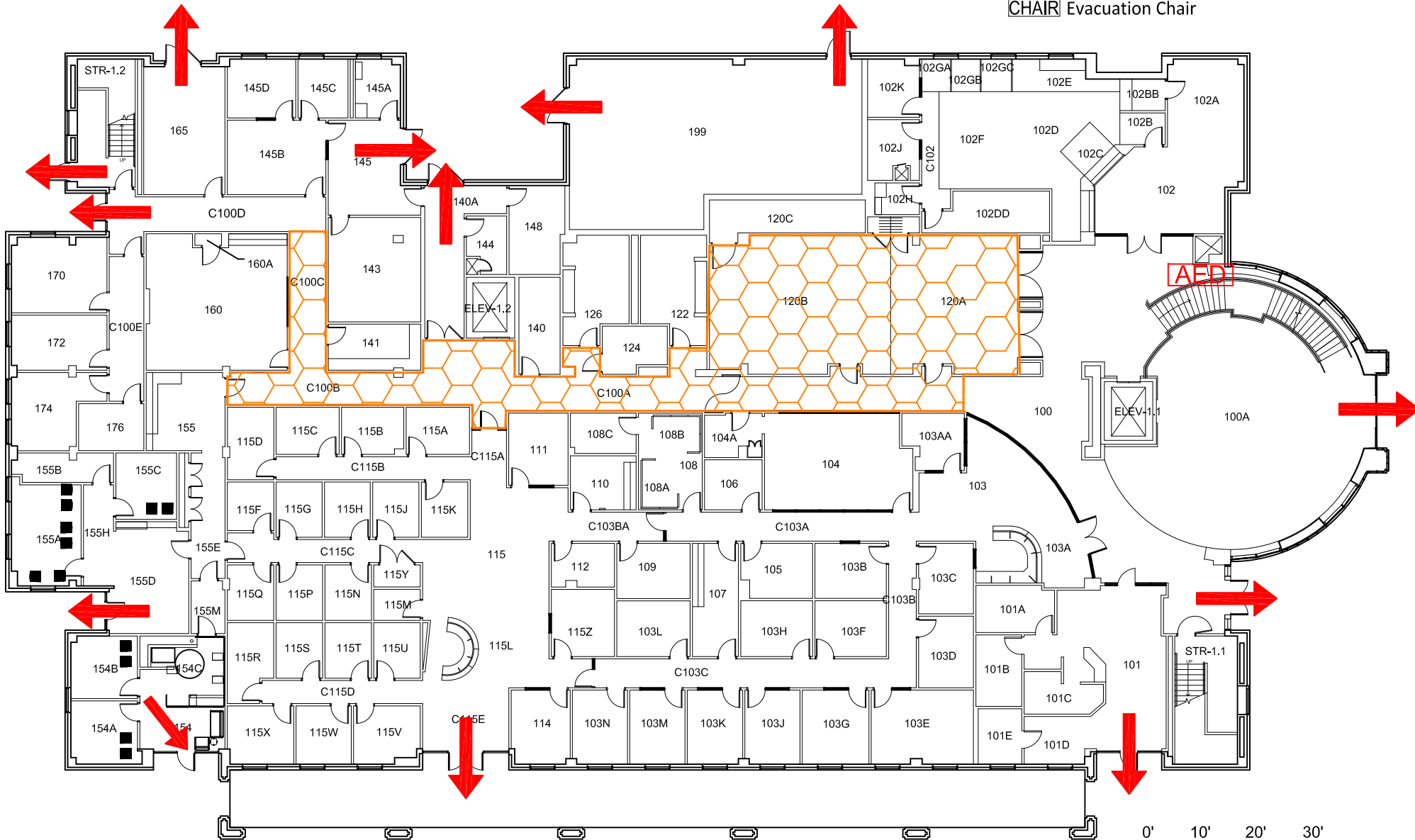
 Areas of Refuge

 Tornado Shelter Areas

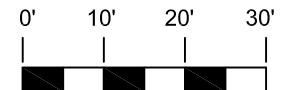
 Exit/Evacuation Routes
In case of fire, do not use elevator

 AED Automatic External Defibrillator

 CHAIR Evacuation Chair



FIRST FLOOR PLAN



GRAPHIC SCALE


CHESTNUT HALL


BLDG #0136


05-2019

Exterior Gross Area
22614

Safety Legend


 Areas of Refuge

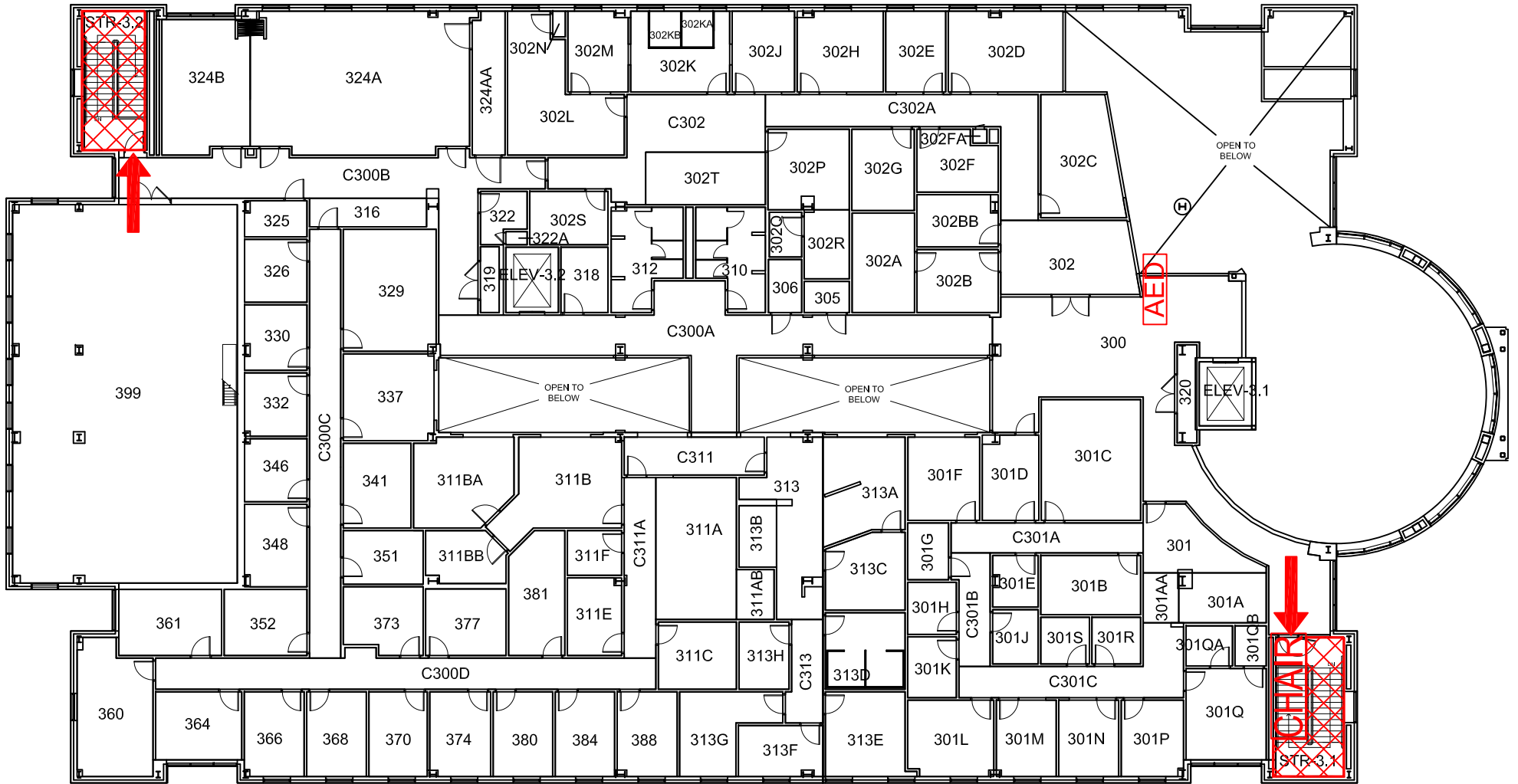
 Tornado Shelter Areas

 Exit/Evacuation Routes

In case of fire, do not use elevator

 AED Automatic External Defibrillator

 CHAIR Evacuation Chair



THIRD FLOOR PLAN

