

Emergency Evacuation Procedures

Chemistry Building

1508 W. Mulberry St. Denton, TX 76201

Severe Weather

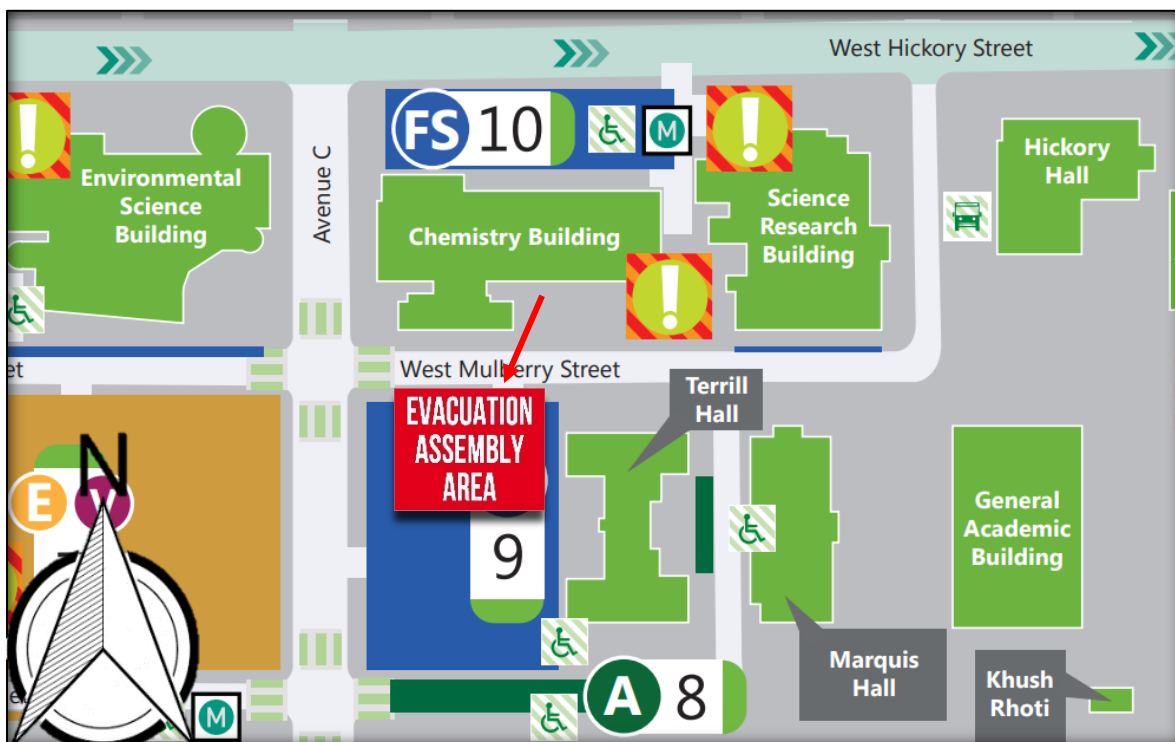
In the event of severe weather, all building occupants should immediately seek shelter in the designated shelter-in-place area in the building. If unable to safely move to the designated shelter-in-place area, seek shelter in a windowless interior room or hallway on the lowest floor of the building.

All building occupants should take shelter in the windowless hallways on the north and east side of the 1st floor including rooms 106 and 109. Avoid standing near windows, doors and walls made of glass.

Bomb Threat/Fire

In the event of a bomb threat or fire in the building, all building occupants should immediately evacuate the building using the nearest exit. Once outside, proceed to the designated assembly area. If unable to safely move to the designated assembly area, contact one or more members of your department or unit to let them know you are safe and inform them of your whereabouts.

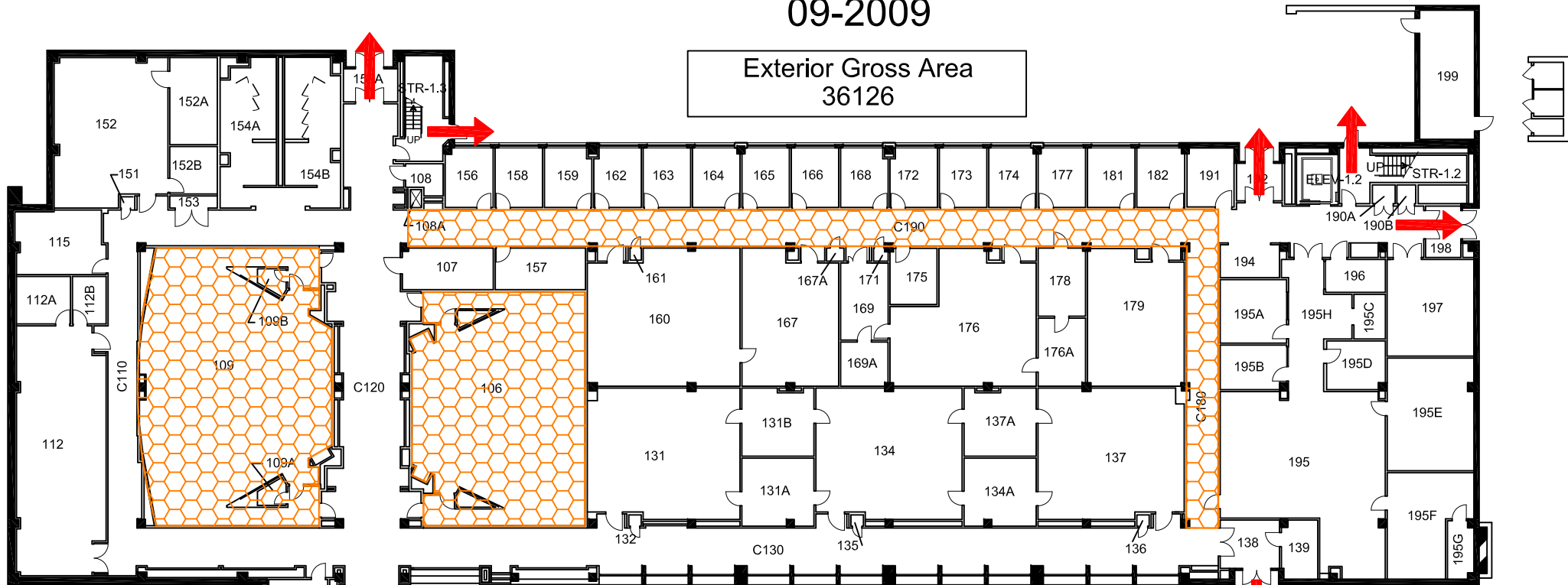
Persons with mobility impairments who are unable to safely exit the building should move to a designated area of refuge and await assistance from emergency responders. **All building occupants should immediately evacuate the building and proceed to parking lot 9 south of the building.**



CHEMISTRY BUILDING





BLDG #0112

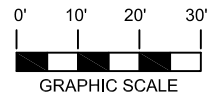
09-2009



FIRST FLOOR PLAN

Safety Legend

-  Areas of Refuge
-  Tornado Shelter Areas
-  Exit/Evacuation Routes
In case of fire, do not use elevator
-  AED Automatic External Defibrillator



AED

