

Emergency Evacuation Procedures

Athletic Center Building

1301 S. Bonnie Brae St. Denton, TX 76207

Severe Weather

In the event of severe weather, all building occupants should immediately seek shelter in the designated shelter-in-place area in the building. If unable to safely move to the designated shelter-in-place area, seek shelter in a windowless interior room or hallway on the lowest floor of the building.

All building occupants should take shelter in the football locker room located in the basement or in room 156. Avoid standing near windows, walls and doors made of glass.

Bomb Threat/Fire

In the event of a bomb threat or fire in the building, all building occupants should immediately evacuate the building using the nearest exit. Once outside, proceed to the designated assembly area. If unable to safely move to the designated assembly area, contact one or more members of your department or unit to let them know you are safe and inform them of your whereabouts.

Persons with mobility impairments who are unable to safely exit the building should move to a designated area of refuge and await assistance from emergency responders.

All building occupants should immediately evacuate the building and proceed to parking lot 83 west of the building.

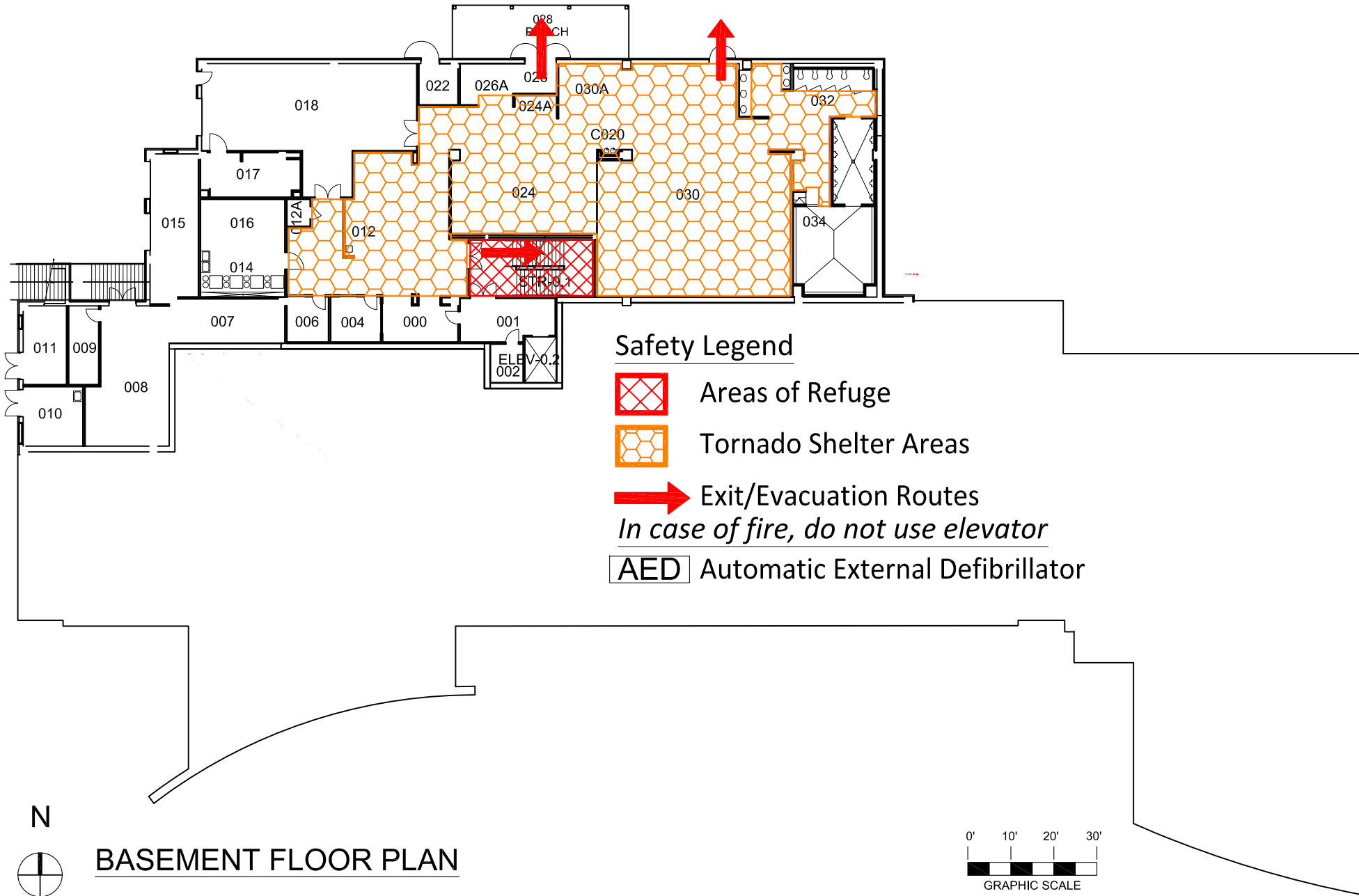


ATHLETIC CENTER

BLDG #0320

08-2005

Exterior Gross Area
11938



Safety Legend



Areas of Refuge



Tornado Shelter Areas



Exit/Evacuation Routes

In case of fire, do not use elevator

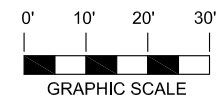


Automatic External Defibrillator

N



BASEMENT FLOOR PLAN







ATHLETIC CENTER

BLDG #0320

05-2017

Exterior Gross Area
36911

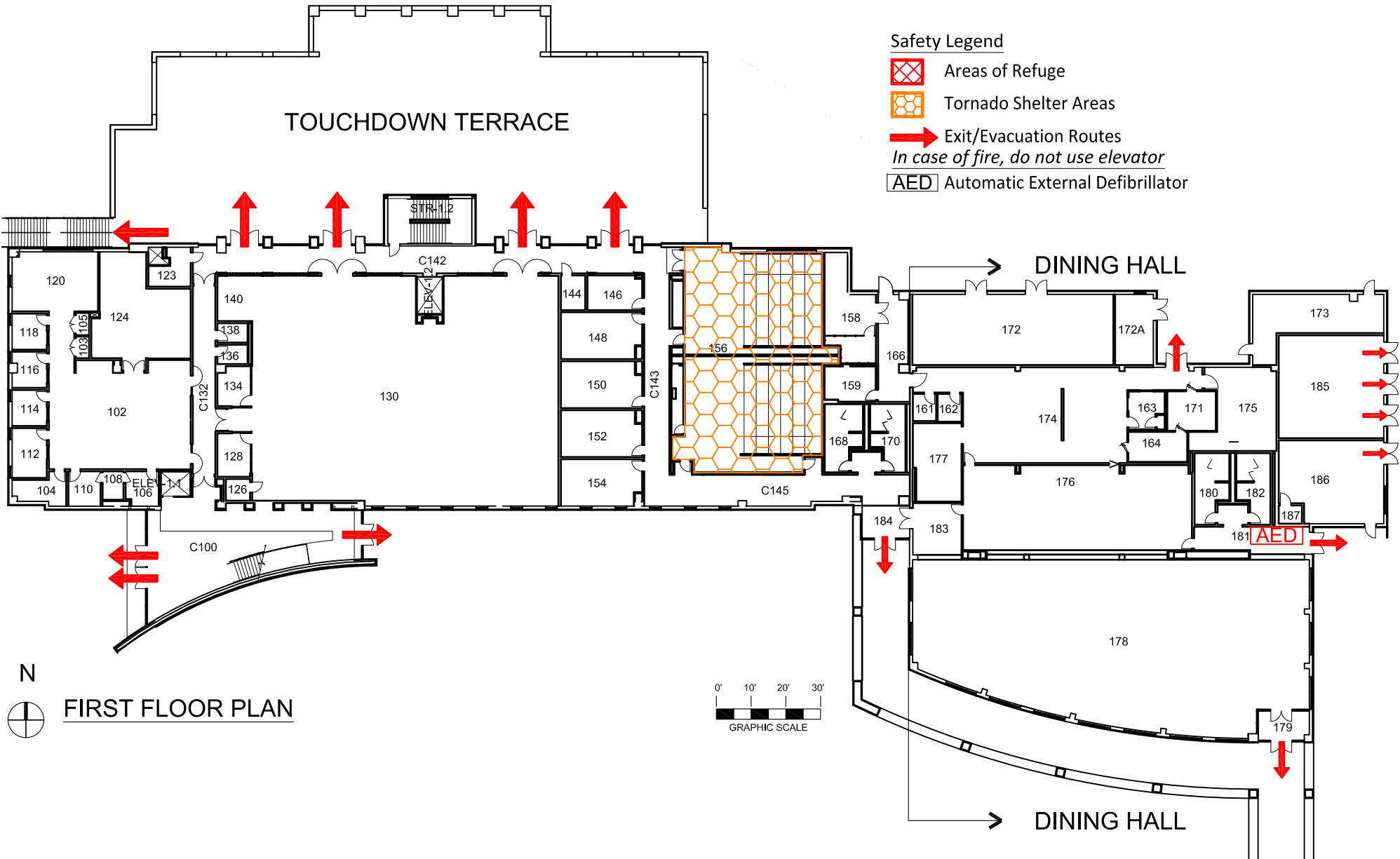
Safety Legend

-  Areas of Refuge
-  Tornado Shelter Areas
-  Exit/Evacuation Routes
In case of fire, do not use elevator
-  AED Automatic External Defibrillator

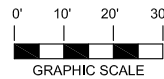
TOUCHDOWN TERRACE

DINING HALL

DINING HALL



FIRST FLOOR PLAN



ATHLETIC CENTER

BLDG #0320

08-2005

Exterior Gross Area
13611

Safety Legend



Areas of Refuge



Tornado Shelter Areas

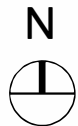
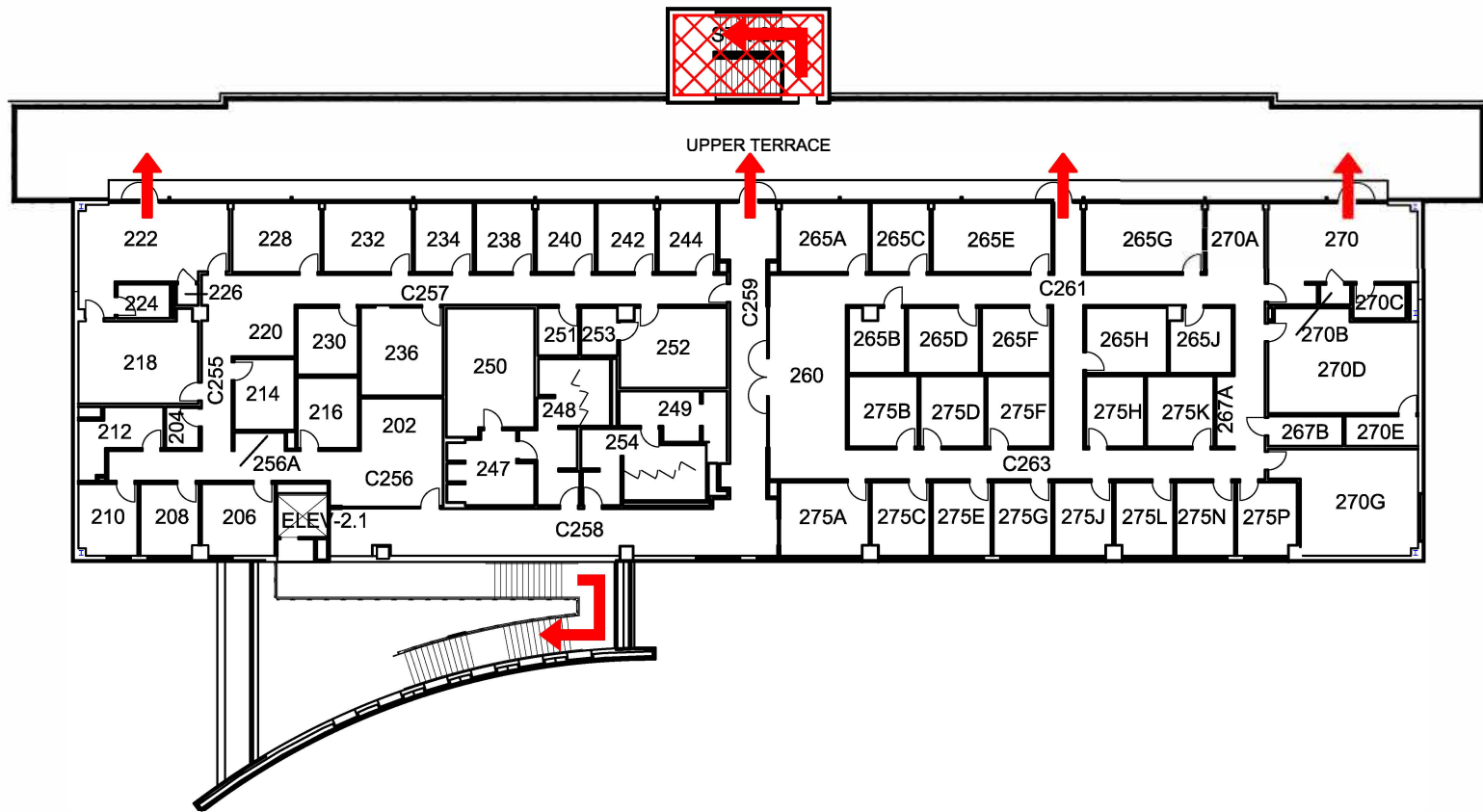


Exit/Evacuation Routes

In case of fire, do not use elevator



AED Automatic External Defibrillator



SECOND FLOOR PLAN

