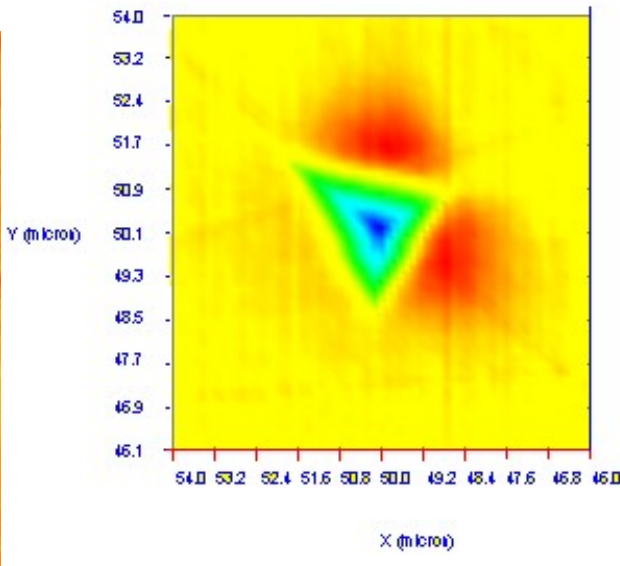
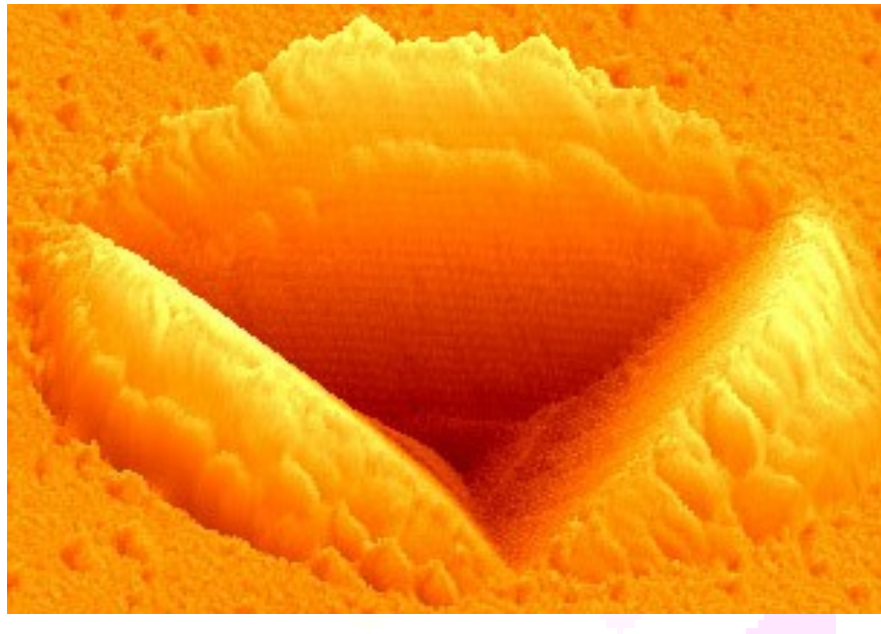




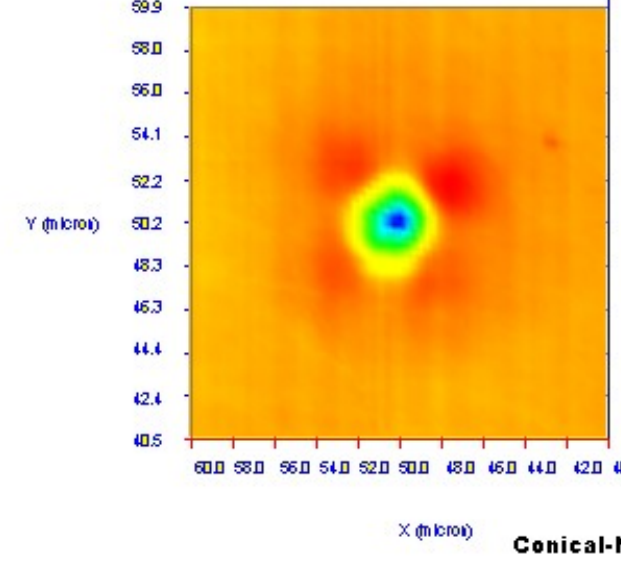
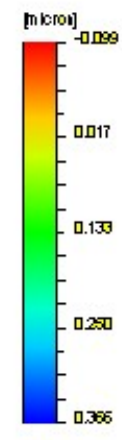
UNIVERSITY OF NORTH TEXAS

College of Engineering Nanoindentation Laboratory

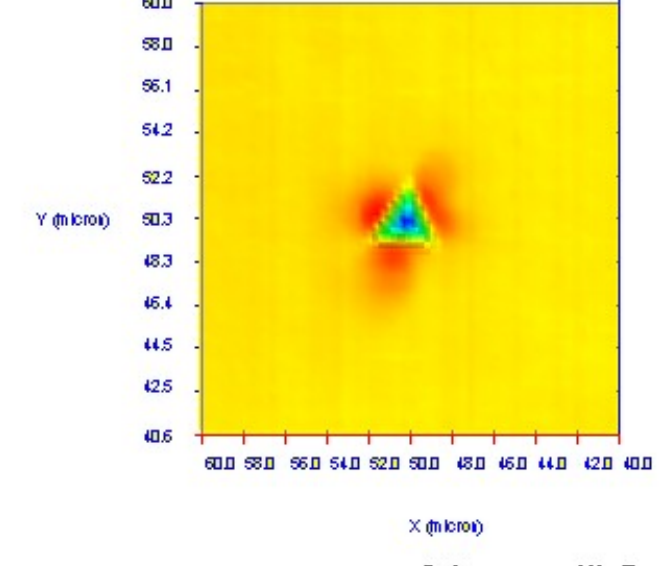
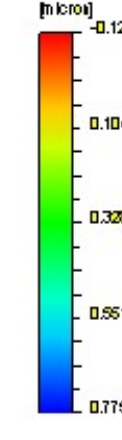
mirshams@unt.edu
940-369-7517



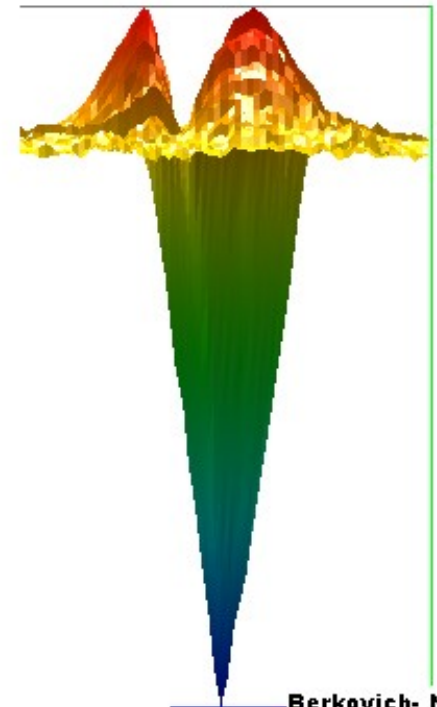
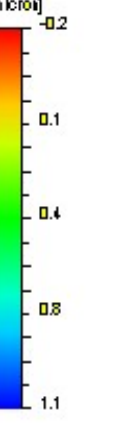
Berkovich-Ni- Top



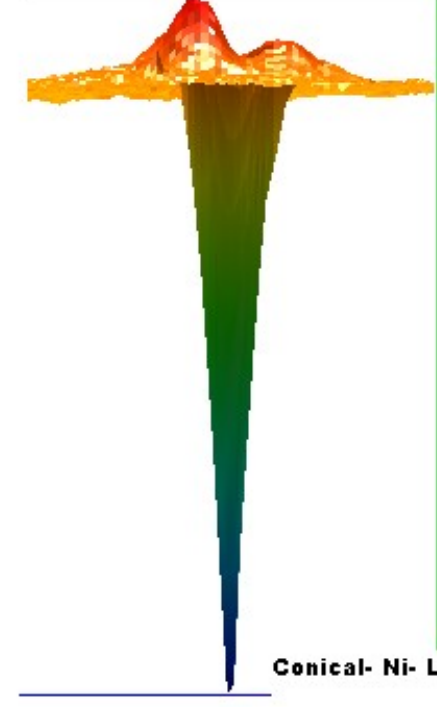
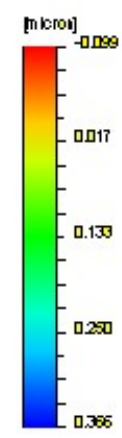
Conical-Ni- Bottom



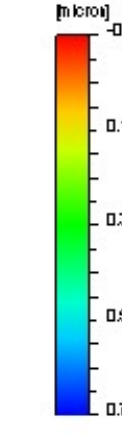
Cubecorner-Ni- Top



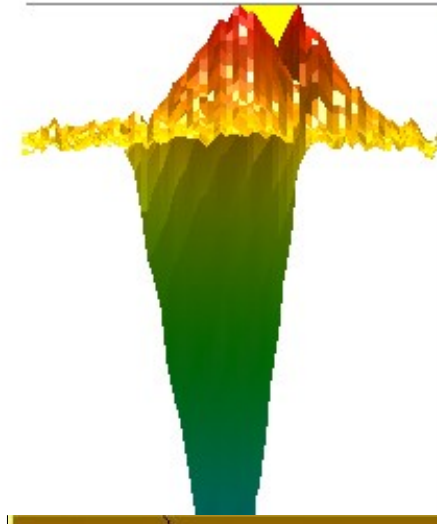
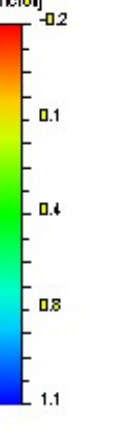
Berkovich-Ni- Left



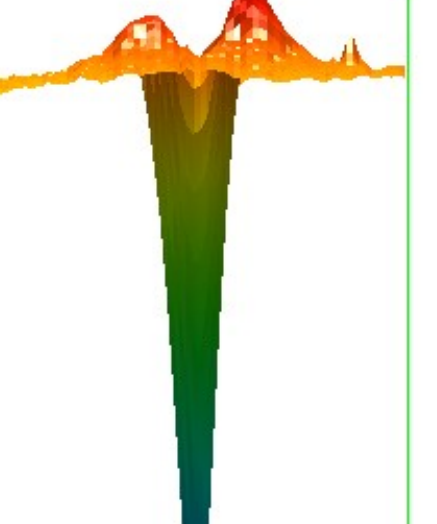
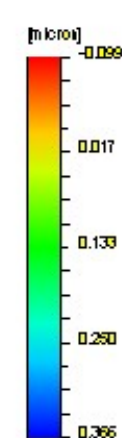
Conical-Ni- Left



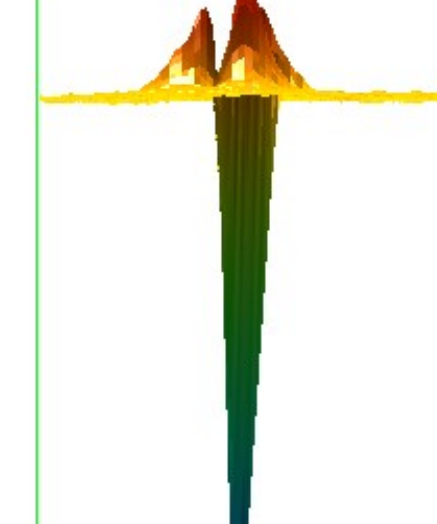
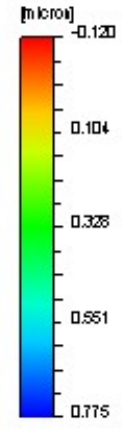
Cubecorner-Ni- Left



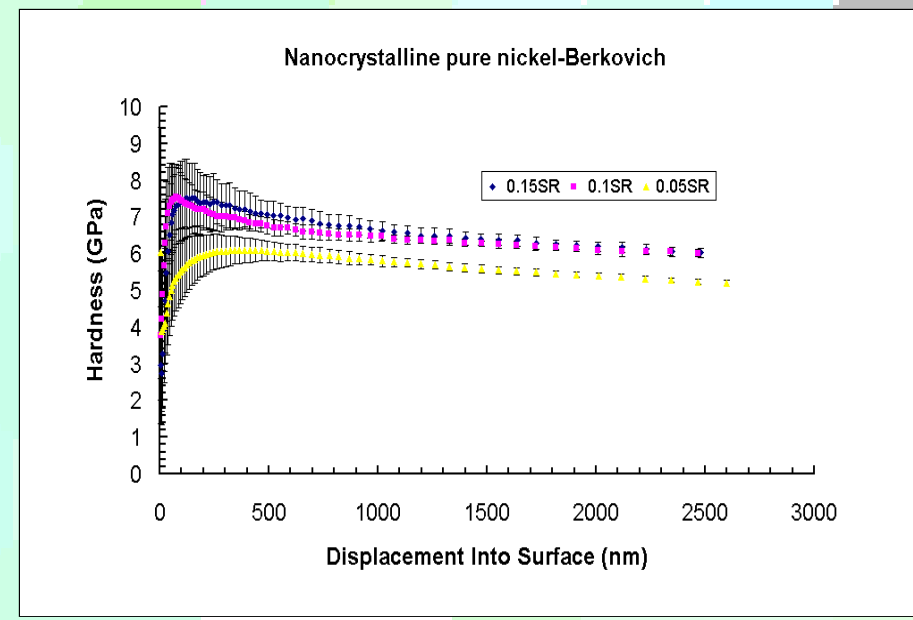
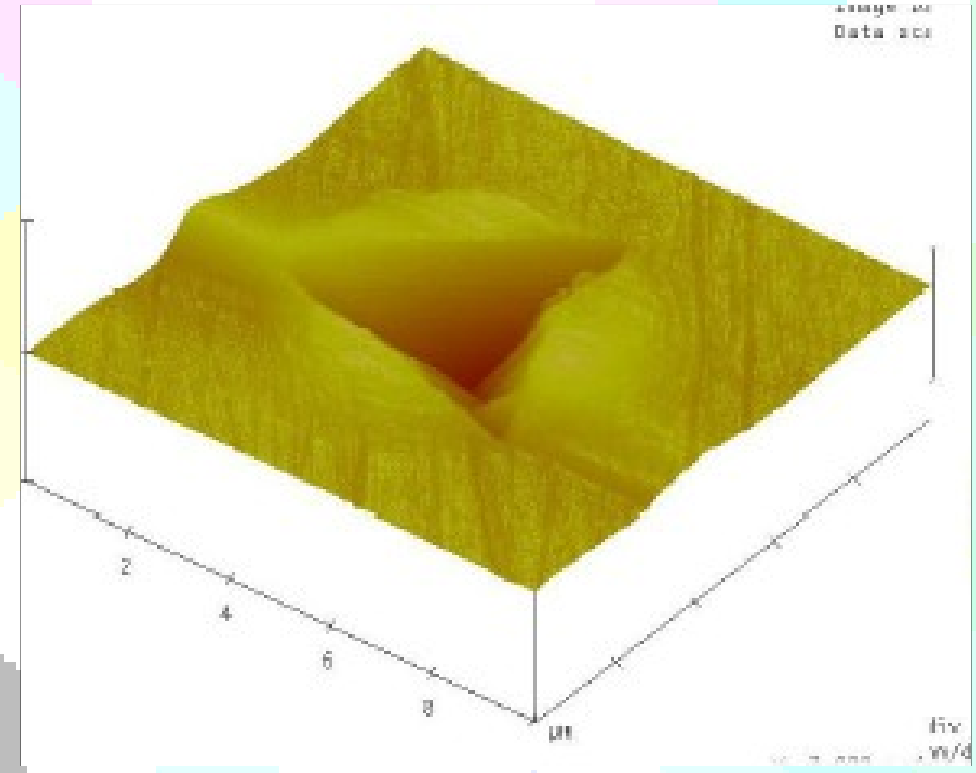
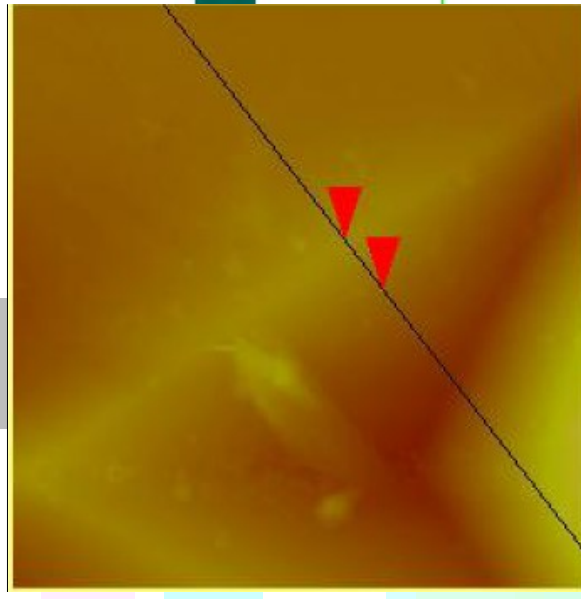
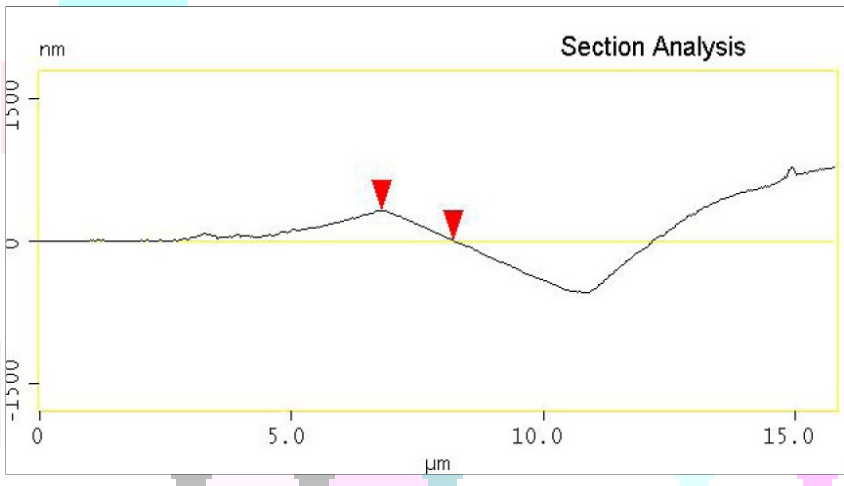
Berkovich-Ni- Front



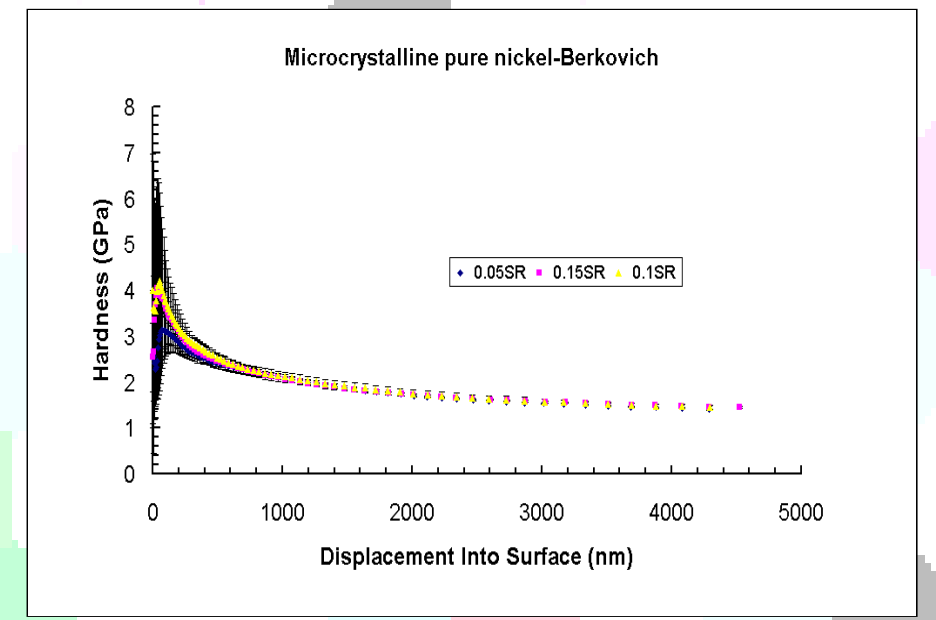
Conical-Ni- Front



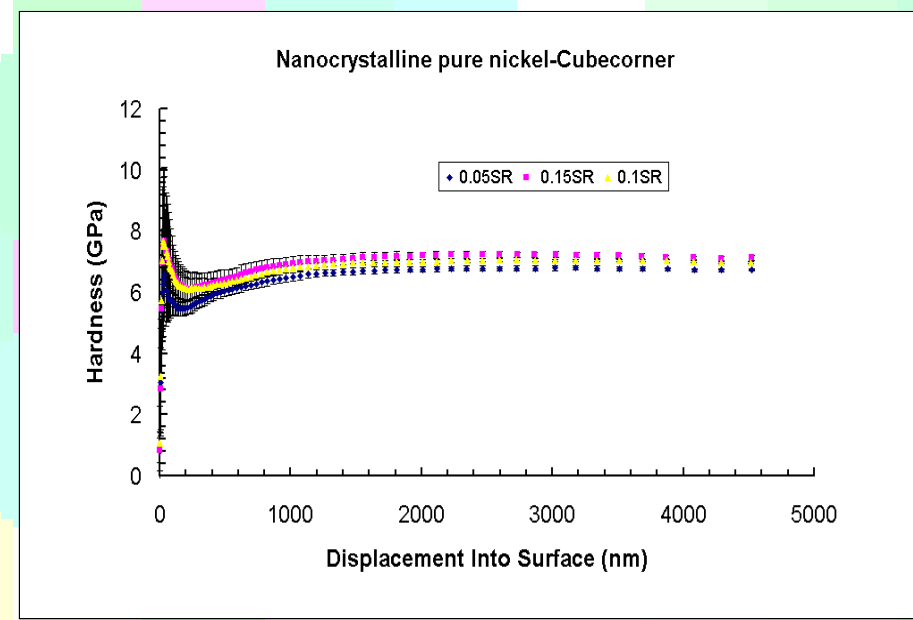
Cubecorner-Ni- Front



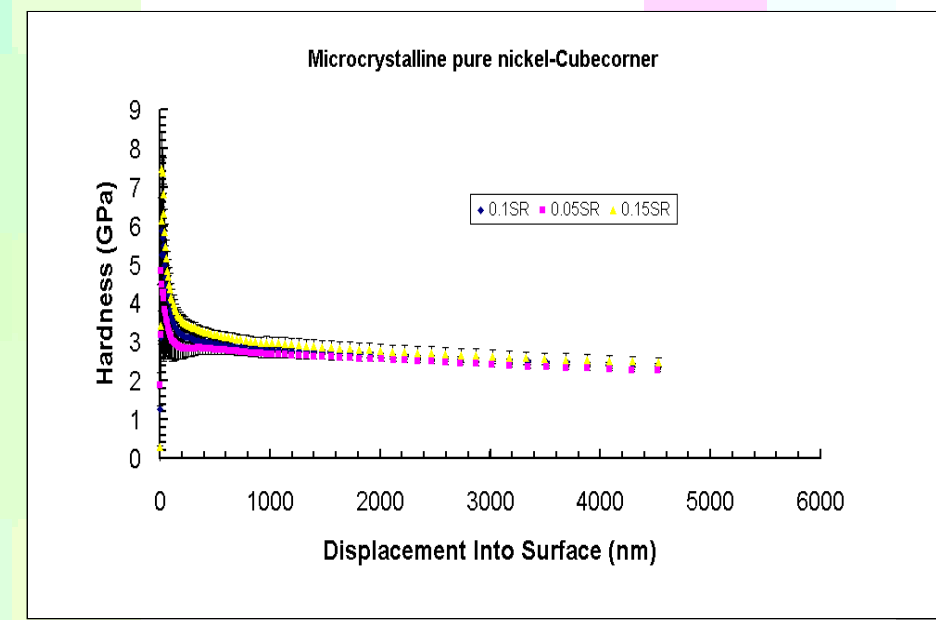
a



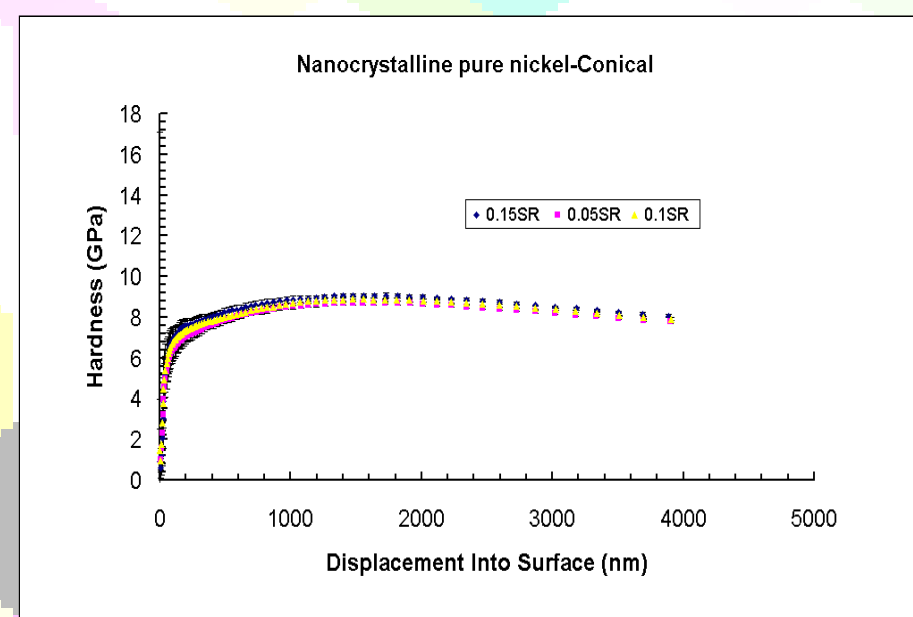
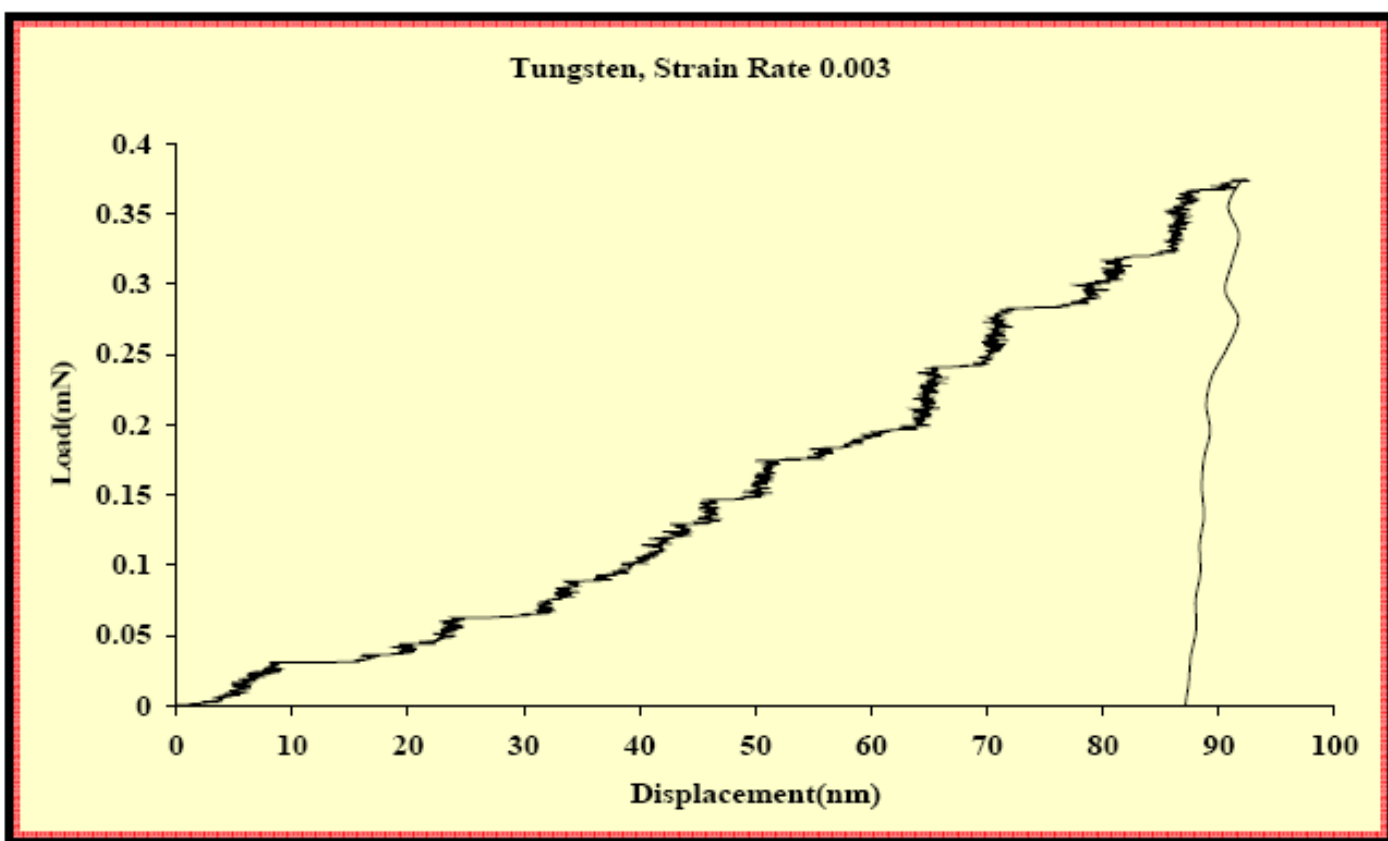
b



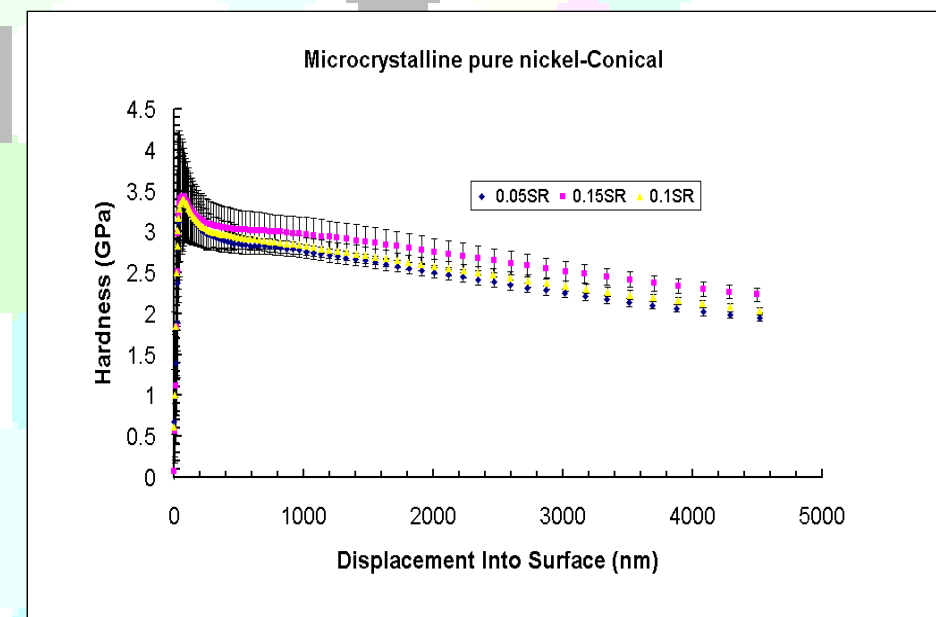
c



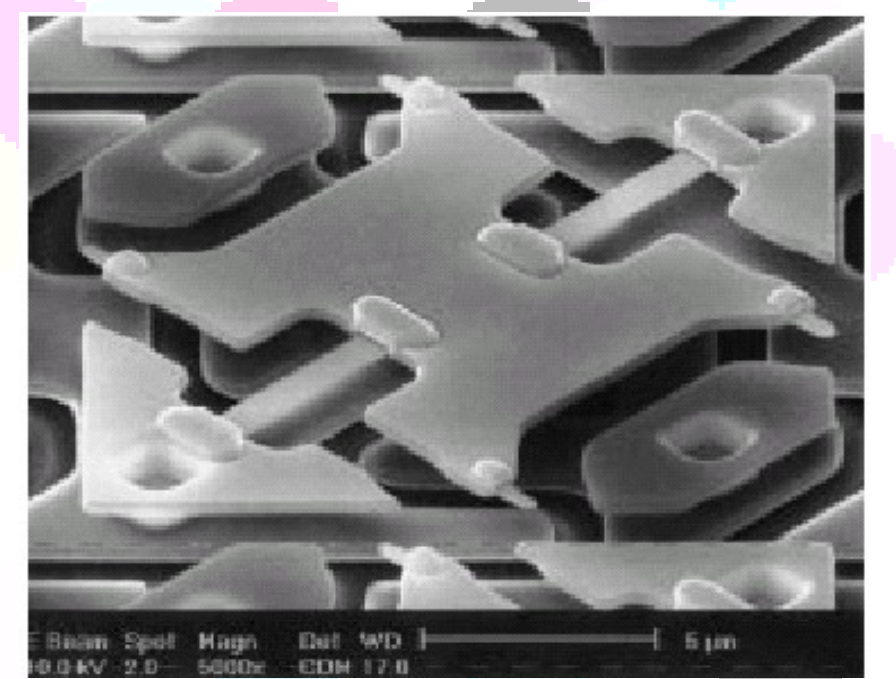
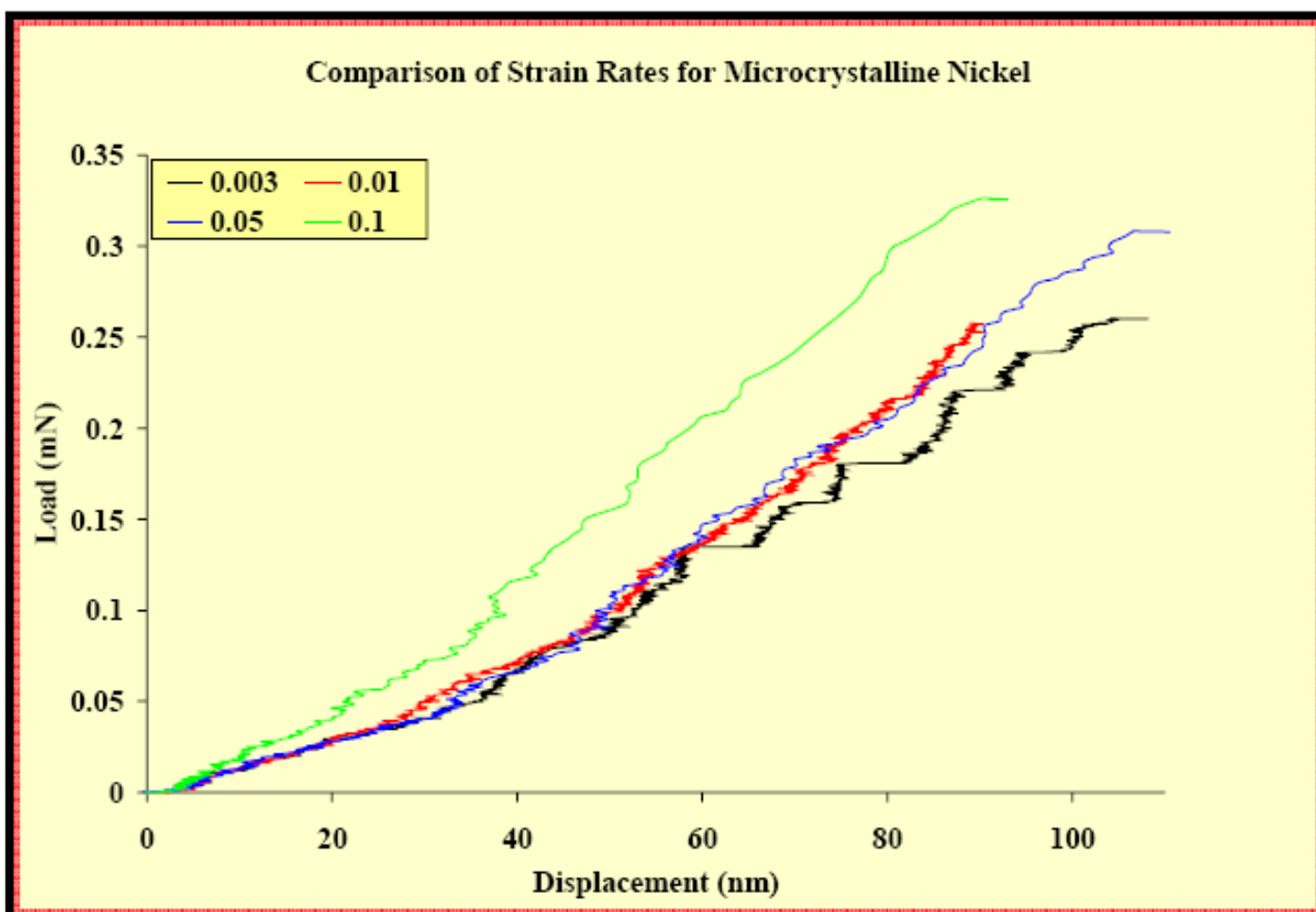
d



e



f



Courtesy Texas Instruments™