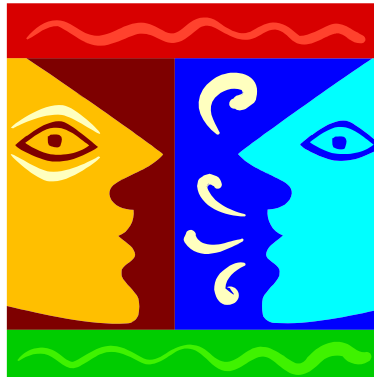


PUBLIC HEALTH SPRING CAREER FORUM

PANELISTS



UNTHSC Campus
Monday, March 6th 5-6:30 PM
RES-114/Beyer Hall



Kirk Barnes, DrPH, MA (Alum)
Health and Human Services Administration, HRSA
Kbarnes1@hrsa.gov

- ❖ **Type of work/research:** Public Health Analyst – Conduct performance reviews on HRSA grantees.
- ❖ **What do you think our students would find interesting about your public health career?** Meet a variety of different people. Work in a very relevant field.
- ❖ **Academic Background:** BA – Biology, Political Science, and Environmental Science
Masters in City and Regional Planning – UTA
Currently working on my dissertation at HSC UNT
- ❖ **Volunteer work:** I work with several political campaigns and with Fort Worth Sister Cities. Help raise money for Shriner's Children's Hospital
- ❖ **Future goals:** Finish my dissertation, stay with the federal government.



Craig Field, PhD, MPH
Assistant Professor in Health Promotion and Behavioral Sciences,
UT School of Public Health
craig.field@utsouthwestern.edu

- ❖ **Type of work/research:** I am an Assistant Professor in Health Promotion and Behavioral Sciences, Project Director at the University of Texas School of Public Health in Dallas. I am the Project Director for a large clinical trial funded by NIH evaluating potential ethnic differences in response to a brief alcohol intervention for injured patients. I am collaborating with The National Highway Traffic Safety Administration to promote the implementation of screening and brief intervention for alcohol problems in regional trauma centers. Finally, I am the Scientific and Training Coordinator for NIDA's Clinical Trials Network at UT Southwestern Medical Center.

- ❖ **What do you think our students would find interesting about your public health career?** The aspects of my career that may be of most interest to students are the blending of public health and clinical psychology; my participation in NIH loan repayment program and my transition from student and research assistant to faculty.
- ❖ **Academic Background:** PhD in clinical psychology, MPH in community health,
- ❖ **Volunteer work:** I worked at the Convention Center during the Hurricane relief efforts which provided interesting insights into the integration of public health and clinical psychology
- ❖ **Future goals:** Obtain funding as a principal investigator of an NIH funded grant, Become Associate Professor and/or obtain tenure, Publish APA Journal and influence the provision of mental health within medical care (i.e., mental health parity).



Sonja Johnson, MPH (Alum)
Environmental Health Manager, City of Grand Prairie
sjohnson@gptx.org

- ❖ **Type of work/research:** Manage an Environmental Health Program
- ❖ **What do you think our students would find interesting about your public health career?** Emergency responses and the diversity of program activities.
- ❖ **Academic Background:** AAS in Medical Laboratory, BS in Health Professions, MPH in Health Administration
- ❖ **Volunteer work:** Altrusa International Inc., Expand Your Horizon
- ❖ **Future goals:** Program Director, City Mayor



Santos Navarrette Jr., MA, MBA
Associate Director, Environmental Health & Disease Control
Tarrant County Public Health Department
snavarrettejr@tarrantcounty.com

- ❖ **Type of work/research:** Public Health
- ❖ **What do you think our students would find interesting about your public health career?** Various public positions held
- ❖ **Academic Background:** Wayland Baptist University
- ❖ **Volunteer work:** Various Dept Committees
- ❖ **Future goals:** PhD in related field



Amy Raines, MPH (Alum)
Team Leader, City of Fort Worth
amy.raines@fortworthgov.org

- ❖ **Type of work/research:** Community health, outreach
- ❖ **What do you think our students would find interesting about your public health career?** Working with community health workers. Working directly with the community to plan and implement public health programs.
- ❖ **Academic Background:** Undergrad, Social Work at UT Austin and MPH UNTHSC SPH
- ❖ **Volunteer work:** assisting refugees with adaptation to U.S. and animal rescue
- ❖ **Future goals:** currently pursuing DrPH at UNTHSC



Brad Walsh, MPH
Parkland Health & Hospital System
bwalsh@parknet.pmh.org

- ❖ **Type of work/research:** population health assessments, large datasets, survey creation and analysis
- ❖ **What do you think our students would find interesting about your public health career?** The role of population health needs assessments in policy and planning
- ❖ **Academic Background:** BS in psychology, Millsaps College (Jackson, MS); PH UT School of Public Health Houston
- ❖ **Volunteer work:** my daughter's school, Civil War living history
- ❖ **Future goals:** to contribute to the success of Parkland's mission, and to add to the knowledge base of national planners in health policy and indigent care policy and practice



Diahann L. Williams, MHS
Senior Staff Health Insurance Specialist, DHHS/ U.S. Public Health Service
diahann.williams@cms.hhs.gov

- ❖ **Type of work/research:** Project Officer, End Stage Renal Disease Program – Centers for Medicare & Medicaid Services
- ❖ **What do you think our students would find interesting about your public health career?** I've had diverse opportunities to pursue my public health career in a multiple settings.
- ❖ **Academic Background:** B.A., Public Health – Social and Behavioral Sciences, The Johns Hopkins University; M.H.S., Health Policy and Management, The Johns Hopkins University Bloomberg School of Public Health
- ❖ **Volunteer work:** Health and Wellness Ministry, Oak Cliff Bible Fellowship (Dallas, TX)
- ❖ **Future goals:** Obtain Doctorate of Medicine

Participating Vendors:



Mike Yudzky, EMT-P, BS
Public Health Educator
North Texas Poison Center



Donald S. Meuhr
Tech Sgt
Air Force

For more information about the Public Health Career Forum please contact:

Tiffany Lopez
Coordinator, Student Services
University of North Texas Health Science Center
School of Public Health
3500 Camp Bowie Blvd.
Fort Worth, TX 76107
Ph: 817-735-2401
tlopez@hsc.unt.edu