



Mesa Verde Stories

Arts and Archaeology: A Presentation and Exhibition

Thursday March 29: 6–8:30pm



Thursday, March 29

6:00pm—EESAT Lobby—Reception

7:00pm—ENV 125—Presentation

7:40pm—Eagle Exhibit Hall, ENV 160—Exhibition

Steve Bardolph, Photographer and Graphic Designer

Robert Figueroa, Environmental Justice Studies Philosopher

Melinda Levin, Documentary Video and Filmmaker

Porter Swentzell, Tewa Puebloan and Consultant

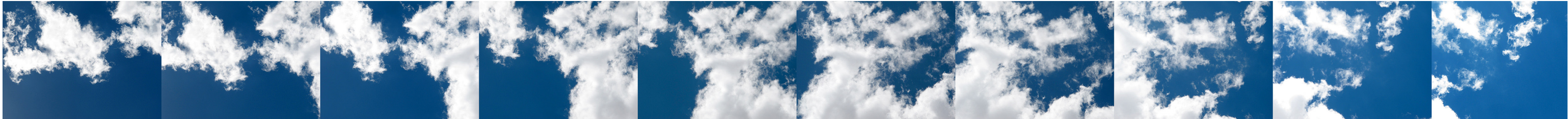
David Taylor, Poet, Writer, and Editor

Steve Wolverton, Animal Ecologist and Archaeologist

Sponsored by the
Center for the Study of
Interdisciplinarity

UNT[®]
UNIVERSITY
OF NORTH TEXAS[™]





Mesa Verde Stories

Friday March 30: 1–2:00pm

A Transdisciplinary Panel Discussion



Friday, March 30

1:00–2:00pm—ENV 110
Transdisciplinary Panel Discussion
Moderated by Britt Holbrook, CSID Assistant Director

Steve Bardolph, University of Minnesota Duluth Art & Design
Robert Figueroa, UNT Philosophy and Religion Studies
Melinda Levin, UNT Radio, Television and Film

Porter Swentzell, Santa Clara Pueblo, New Mexico
David Taylor, UNT English
Steve Wolverton, UNT Department of Geography

Sponsored by the
Center for the Study of
Interdisciplinarity

UNT[®]
UNIVERSITY
OF NORTH TEXAS[™]

